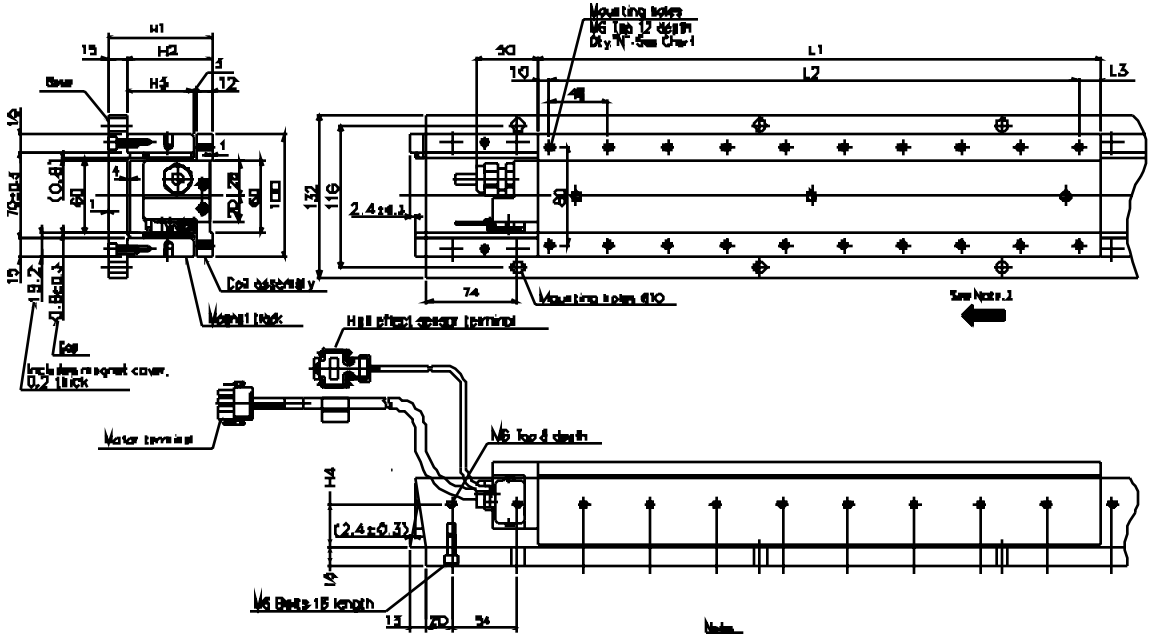


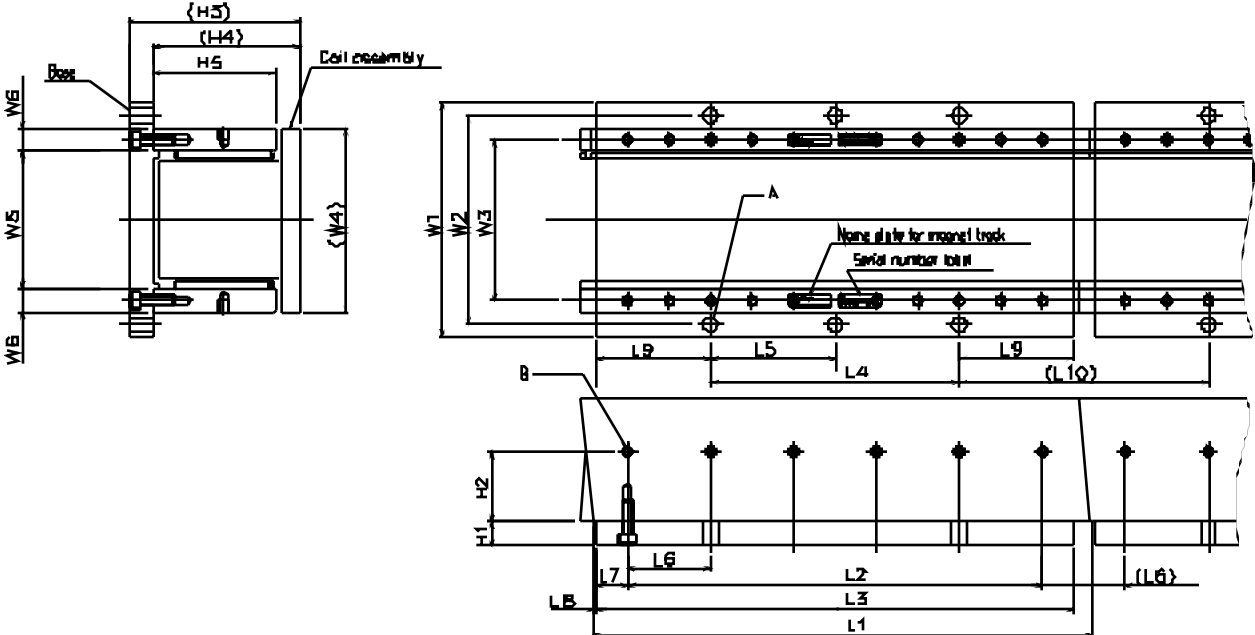
Dimensional Drawing of SGLTW-20, SGLTW-35



Notes
 1 All dimensions are in mm.
 2 Coil assembly magnet is carry direction when permeated phase U,V, or W in order.
Warning
 Strong magnetic field exists near the magnets. Users of robots or other similar devices are strongly recommended to maintain a distance of 200mm from the magnets.

Motor Model SGLTW-	Dim. L1	Dim. L2	Dim. L3	Dim. H1	Dim. H2	Dim. H3	Dim. H4	Units N	Mass (Kg)	Magnet Track Model SGLTM-
20A170A□	170	144	16	70	55	40	27	8	2.6	20□□□A
20A320A□	315	288	17					14	4.6	
20A460A□	460	432	18					20	6.7	
35A170A□	170	144	16	85	70	55	34.5	8	3.7	40□□□A
35A320A□	315	288	17					14	6.8	
35A460A□	460	432	18					20	10	

**Dimensional Drawing of Magnet Track
(Applicable only to North American Markets)**



		Magnet Track Model											
		20324AY	20540AY	20756AY	35324AY	35540AY	35756AY	40405AY	40675AY	40945AY	80405AY	80675AY	80945AY
Mass (Kg)		5.1	8.5	12	6.4	11	15	13	21	30	18	31	43
Dimensions	L1	324	540	756	324	540	756	405	675	945	405	675	945
	L2	270	486	702	270	526	742	337.5	607.5	877.5	337.5	607.5	877.5
	L3	310	526	742	310	526	742	387.5	657.5	927.5	387.5	657.5	927.5
	L4	162	378	594	162	378	594	202.5	472.5	742.5	202.5	472.5	742.5
	L5	162	189	198	162	189	198	202.5	236.5	247.5	202.5	236.5	247.5
	L6	54	54	54	54	54	54	67.5	67.5	67.5	67.5	67.5	67.5
	L7	20	20	20	20	20	20	25	25	25	25	25	25
	L8	23	2.3	2.3	1	1	1	5	5	5	3.1	3.1	3.1
	L9	74	74	74	74	74	74	92.5	92.5	92.5	92.5	92.5	92.5
	L10	162	162	162	162	162	162	202.5	202.5	202.5	202.5	202.5	202.5
	W1	132	132	132	132	132	132	190	190	190	190	190	190
	W2	116	116	116	116	116	116	170	170	170	170	170	170
	W3	87	87	87	87	87	87	131	131	131	131	131	131
	W4	100	100	100	100	100	100	150	150	150	150	150	150
	H1	15	15	15	15	15	15	20	20	20	20	20	20
	H2	27	27	27	34.5	34.5	34.5	39	39	39	57	57	57
	H3	70	70	70	85	85	85	103	103	103	140	140	140
	H4	55	55	55	70	70	70	83	83	83	120	120	120
	H5	40	40	40	55	55	55	63	63	63	100	100	100
	A	2 x 2 - 10 Hole	2 x 3 - 10 Hole	2 x 4 - 10 Hole	2 x 2 - 10 Hole	2 x 3 - 10 Hole	2 x 4 - 10 Hole	2 x 2 - 10 Hole	2 x 3 - 10 Hole	2 x 4 - 10 Hole	2 x 2 - 10 Hole	2 x 3 - 10 Hole	2 x 4 - 10 Hole
B	2 x 6 - M6 x 8L	2 x 10 - M6 x 8L	2 x 14 - M6 x 8L	2 x 6 - M6 x 8L	2 x 10 - M6 x 8L	2 x 14 - M6 x 8L	2 x 6 - M8 x 10L	2 x 10 - M8 x 10L	2 x 14 - M8 x 10L	2 x 6 - M8 x 10L	2 x 10 - M8 x 10L	2 x 14 - M8 x 10L	