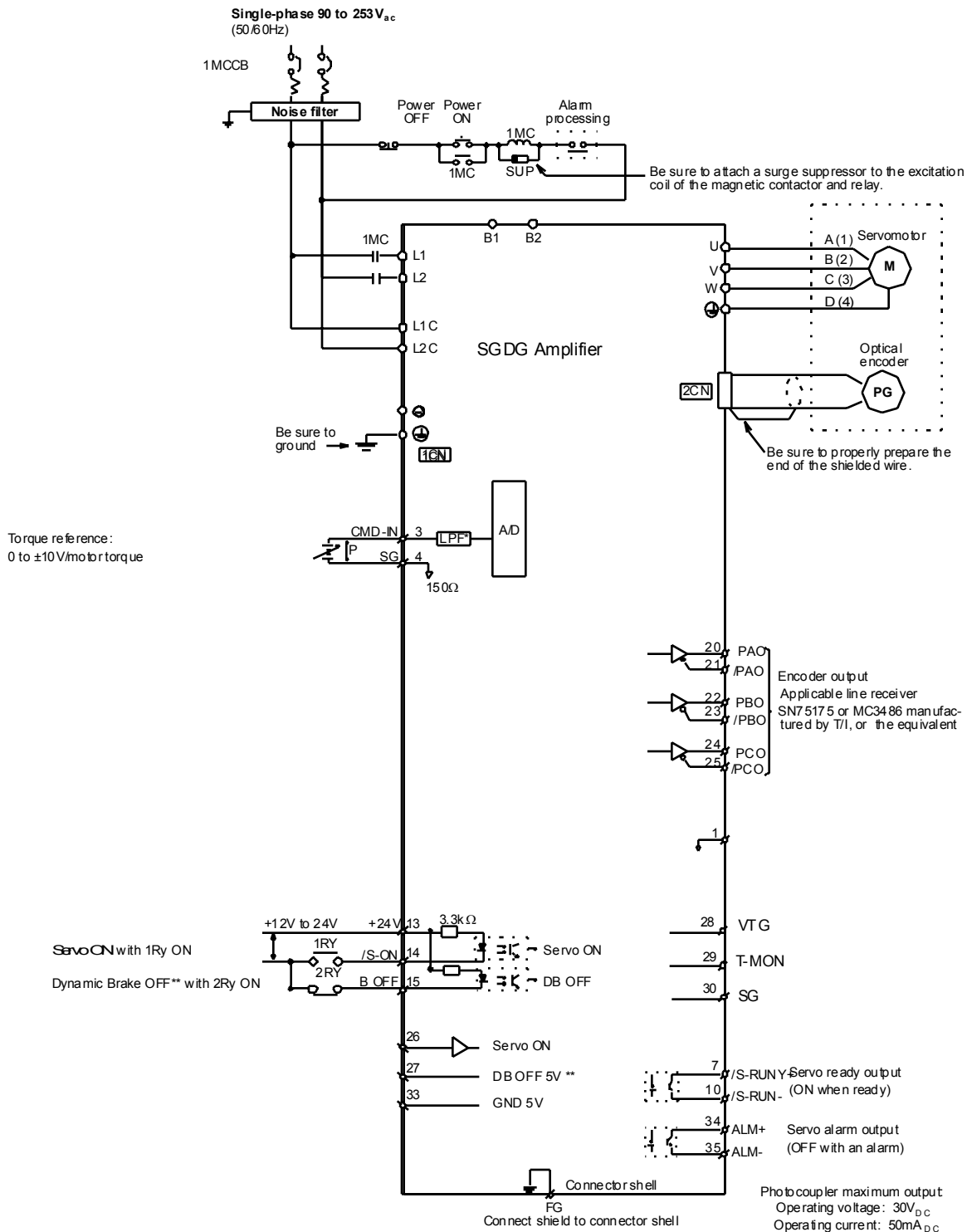


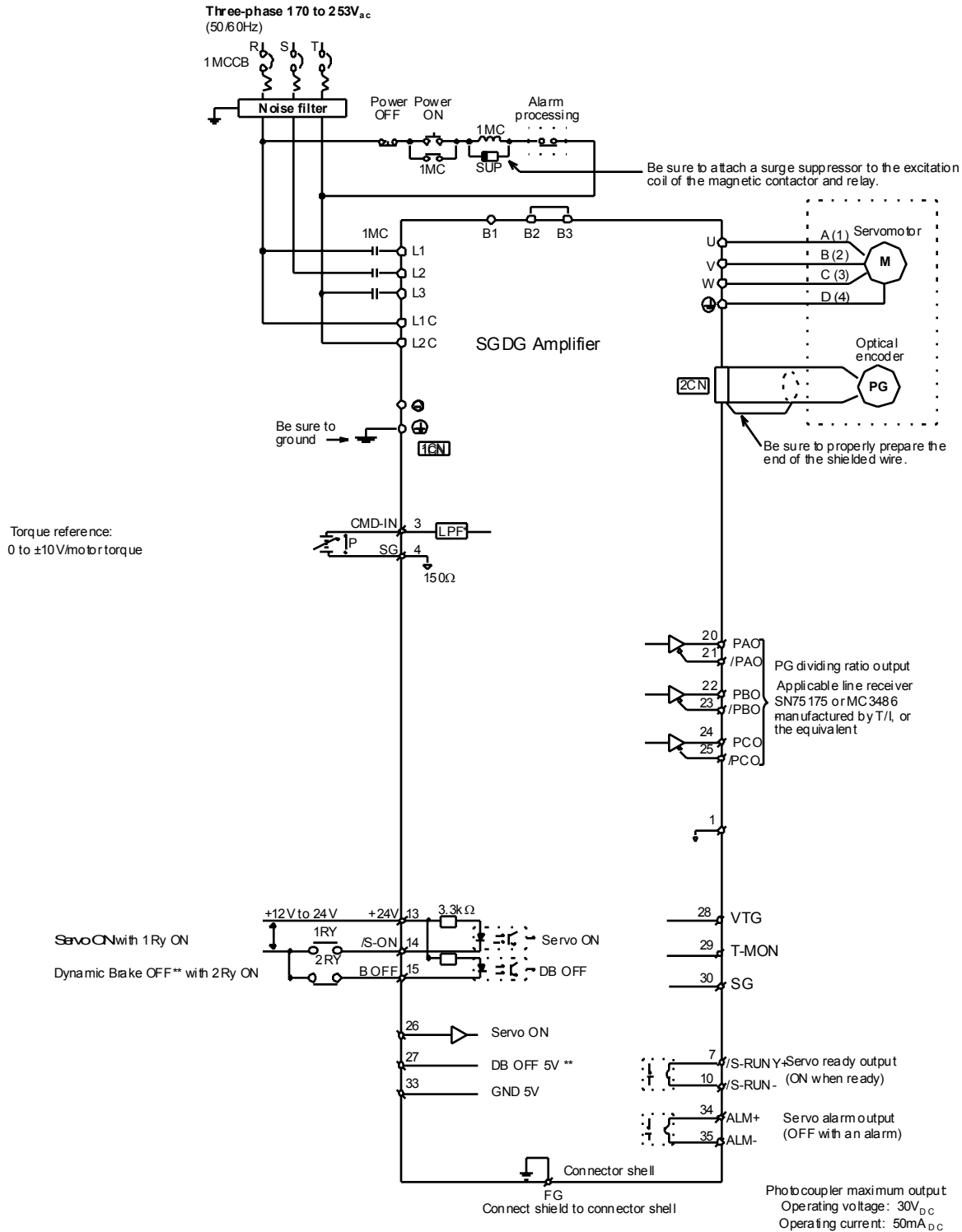
## Connection Diagram, Single-phase



\*The time constant for the primary filter is 47μs

⌈P: Indicates twisted wire pairs.

## Connection Diagram, Three-phase



\* The time constant for the primary filter is 47μs

P: Indicates twisted wire pairs.

## Connection Diagram

### Connection Example

The following diagrams show the procedure for wiring a digital torque amplifier to an incremental encoder.

#### Connecting an encoder (CN2) and output signals from the servo amplifier (CN1)

