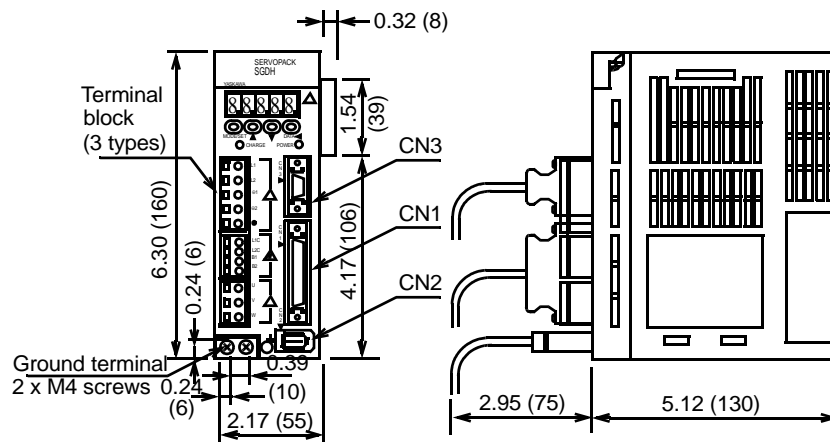


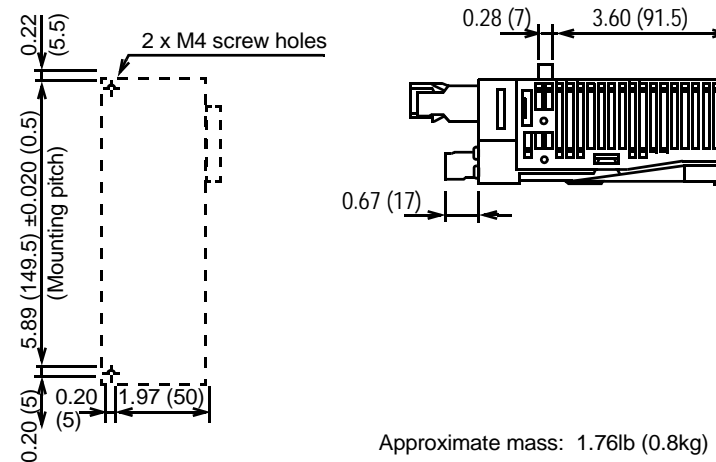
## Dimensions in inches (mm)

### SGDH Servo Amplifier (Standard)

- **SGDH-A3AE to -02AE (200V Single-phase, 30 to 200W) and**
- **SGDH-A3BE to -01BE (100V Single-phase, 30 to 100W)**



Mounting Hole Diagram



Approximate mass: 1.76lb (0.8kg)

Connectors on the amplifier (supplied):

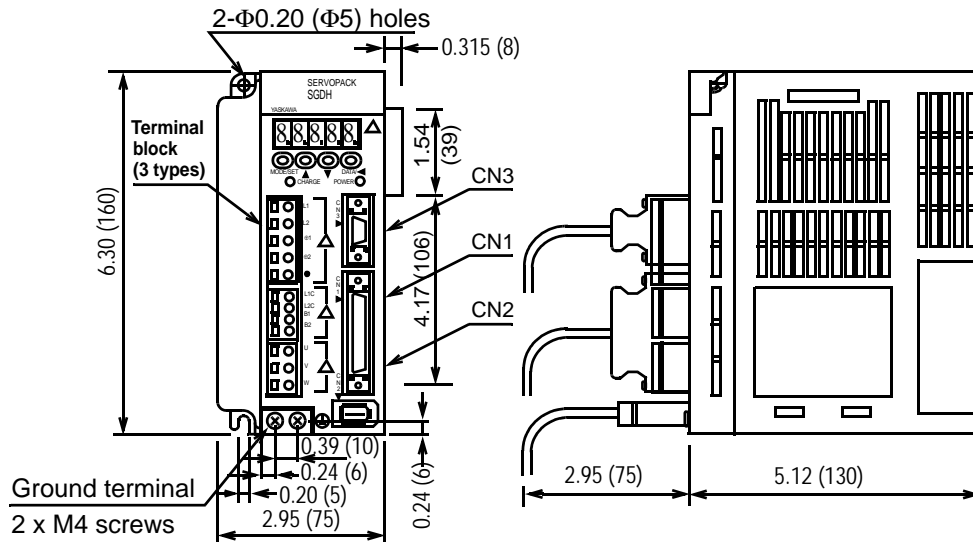
Connector Symbol	Servo Amplifier Receptacle	Manufacturer
CN1	10250-52A2JL	3M Company
CN2	53460-0611	Molex Co.
CN3	10214-52A2JL	3M Company

User needs to obtain the following:

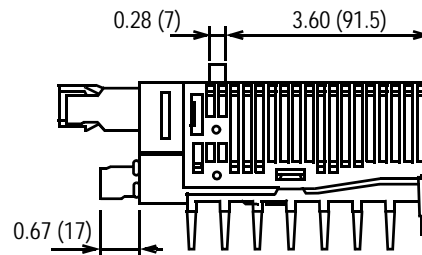
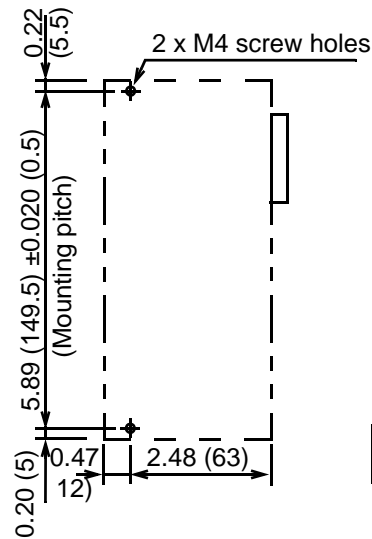
Connector Symbol	Mating Connector	Manufacturer
1CN	10150-3000VE connector 10350-52A0-008 case	3M Company
2CN	55100-0600	Molex Co.
3CN	JEZ-9S connector J-C9-2C case	JST Company

# 100/200V Sigma II Servo System

- SGDH-04AE (200V Single-phase, 400W) and
- SGDH-02BE (100V Single-phase, 200W) and
- SGDH-04FE (100V Single-phase, 400W)



Mounting Hole Diagram

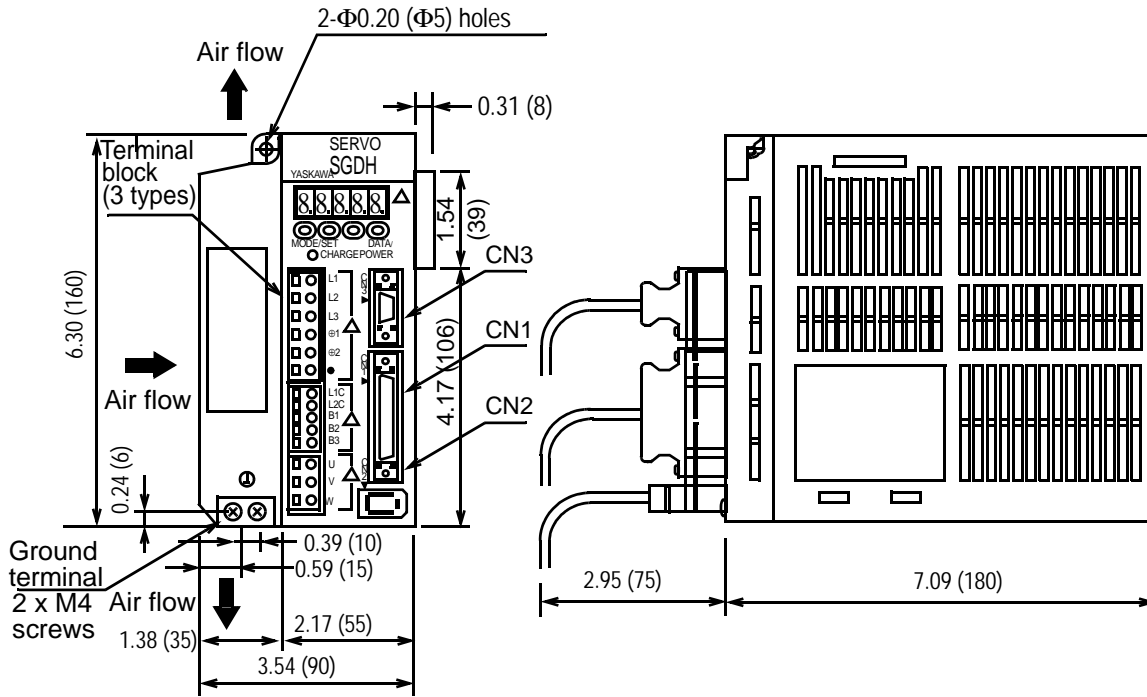


Mating connectors: See page 1

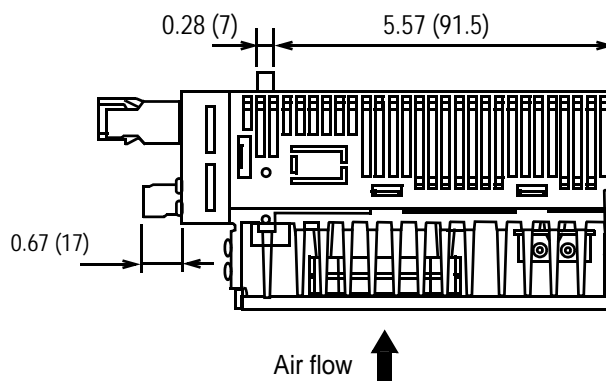
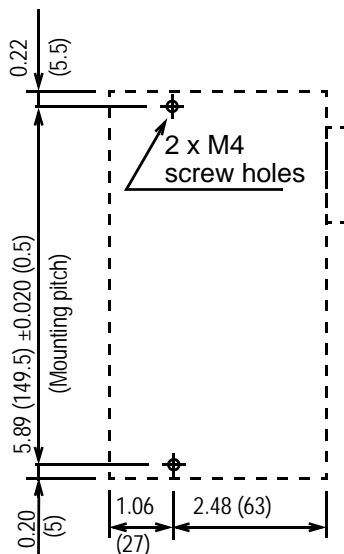
Approximate mass: 2.43lb (1.1kg)

# 100/200V Sigma II Servo Systems

- SGDH-05AE to 10AE (200V Three-phase, 0.5 to 1.0kW)
- SGDH-08AE-S (200V\* Single-phase, 750W)



Mounting Hole Diagram



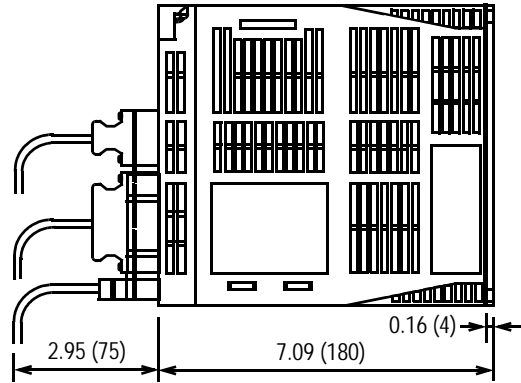
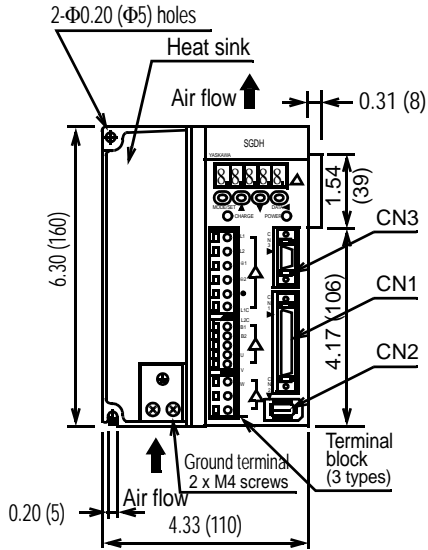
Approximate mass: 3.75lb (1.7kg)

Mating connectors: See page 1

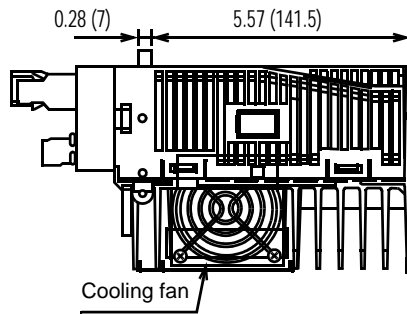
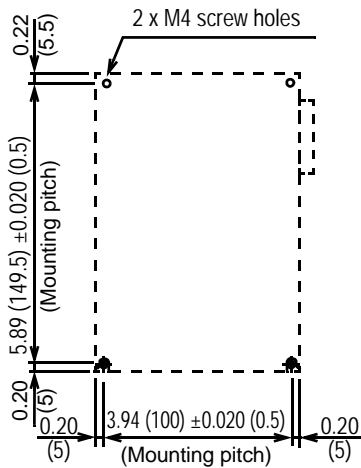
\* Rating 200 to 230V<sub>ac</sub> +10% -5%

# 100/200V Sigma II Servo System

- **SGDH-15AE (200V Three-phase, 1.5kW)**



Mounting Hole Diagram

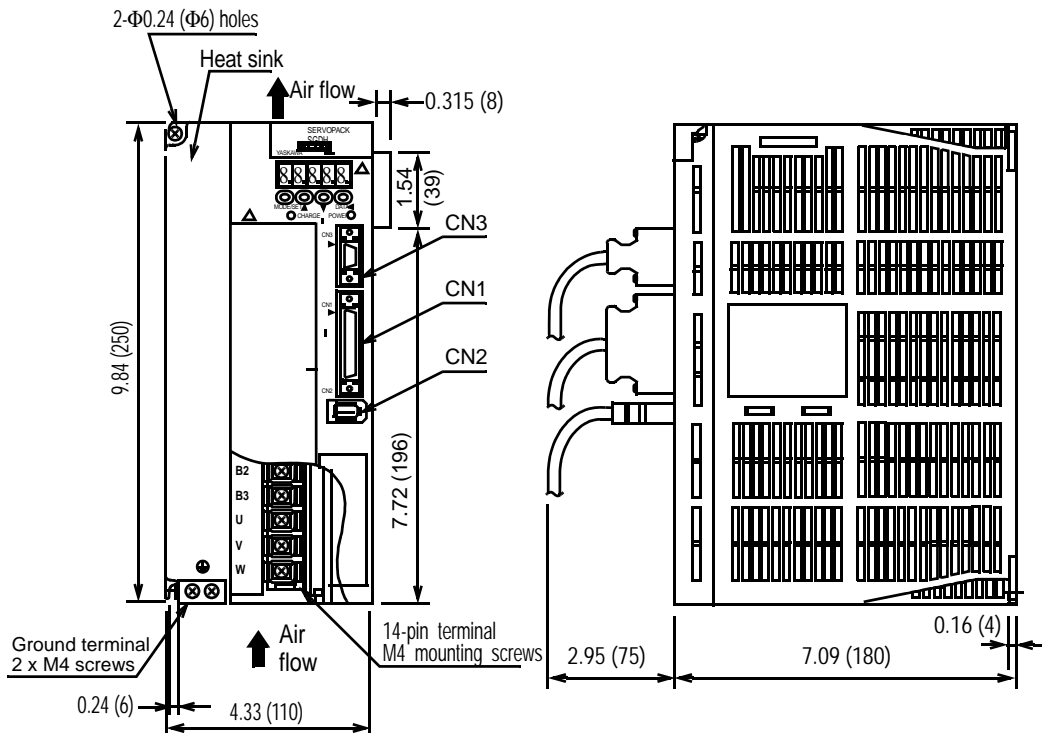


Approximate mass: 6.17lb (2.8kg)

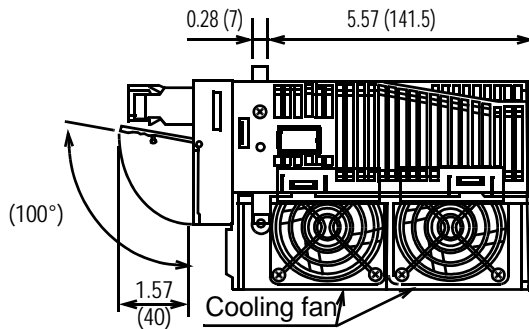
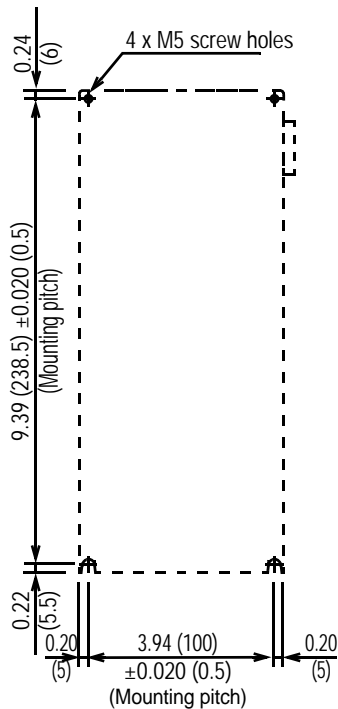
Mating connectors: See page 1

# 100/200V Sigma II Servo Systems

- SGDH-20AE, 30AE (200V Three-phase, 2.0kW, 3.0kW)
- SGDH-15AE-S (200V Single-phase, 1.5 kW)\*



Mounting Hole Diagram



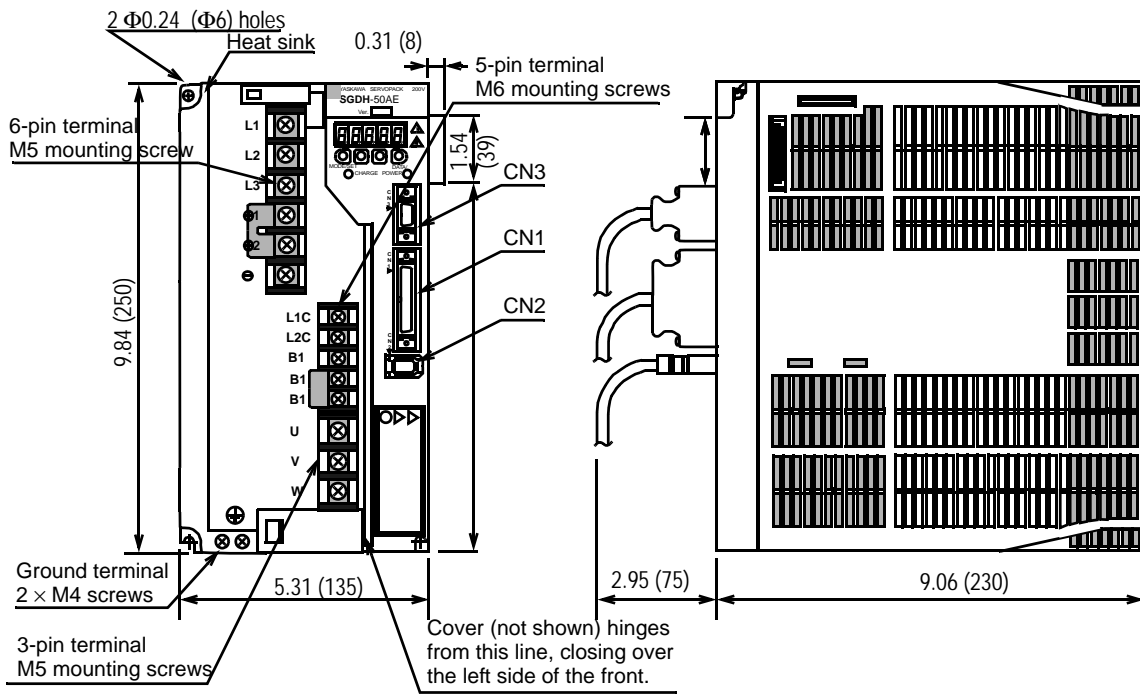
Approximate mass: 8.38lb (3.8kg)

Mating connectors: See page 1

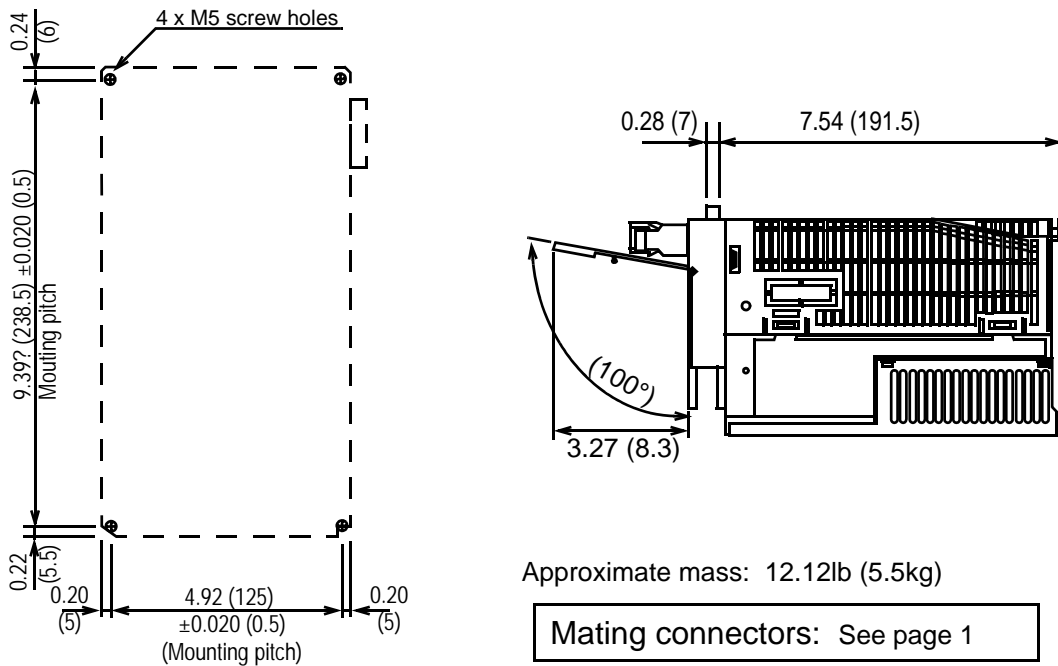
\* Rating: 200 to 230V<sub>ac</sub> +10%, -5%

# 100/200V Sigma II Servo System

- **SGDH-50AE (200V Three-phase, 5.0kW)**

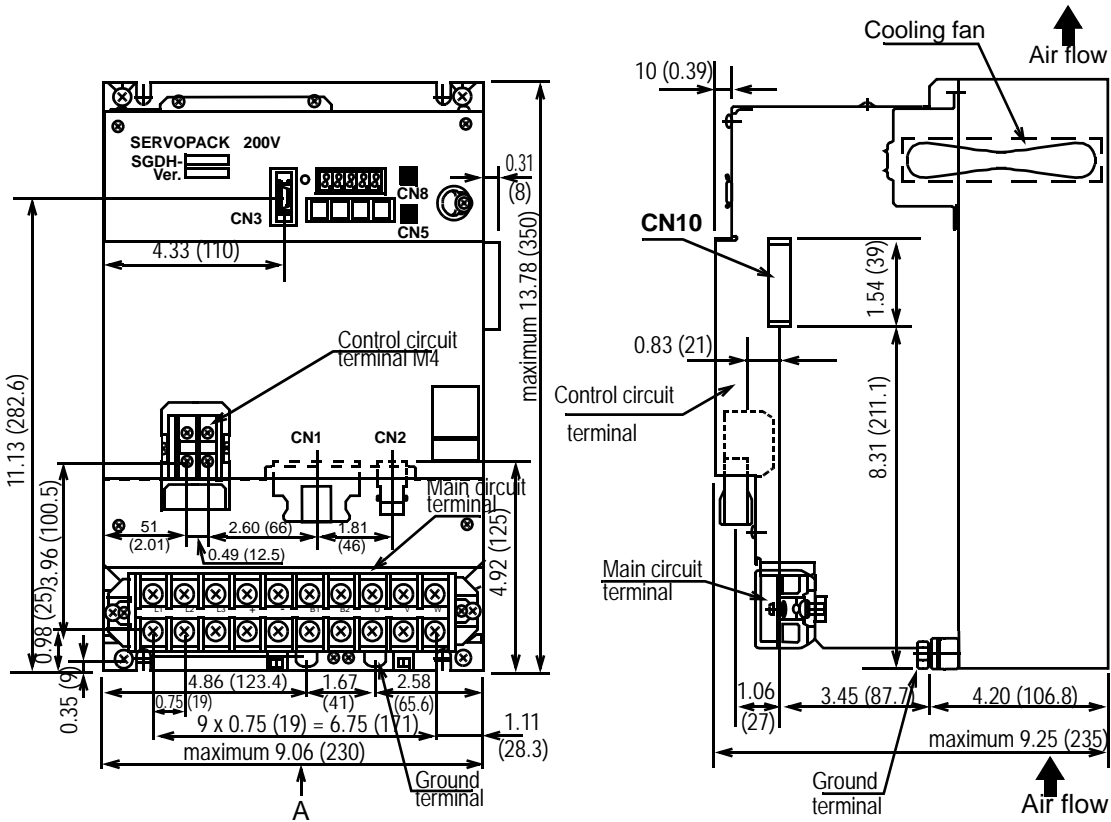


Mounting Hole Diagram

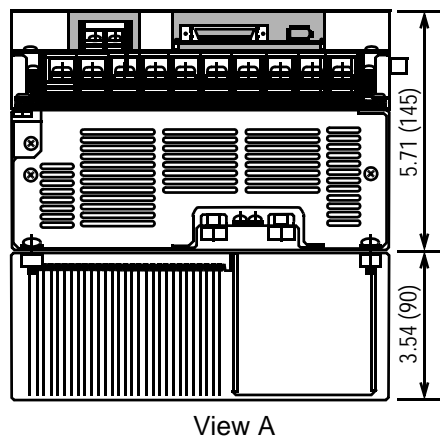
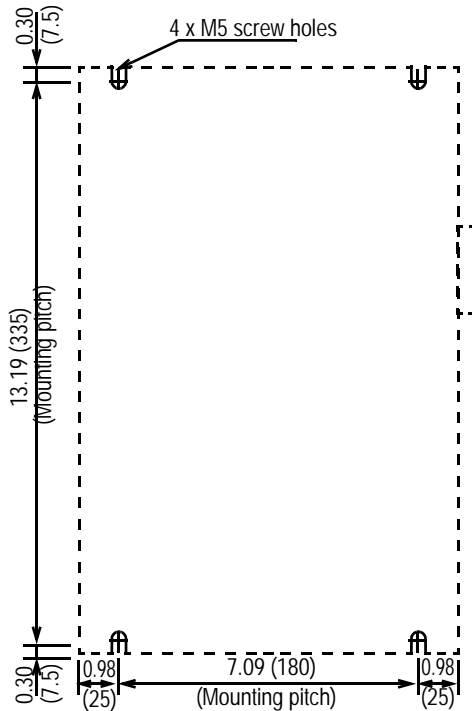


# 100/200V Sigma II Servo Systems

- SGDH-60AE, SGDH-75AE (200V Three-phase, 6.0kW, 7.5kW)



Mounting Hole Diagram



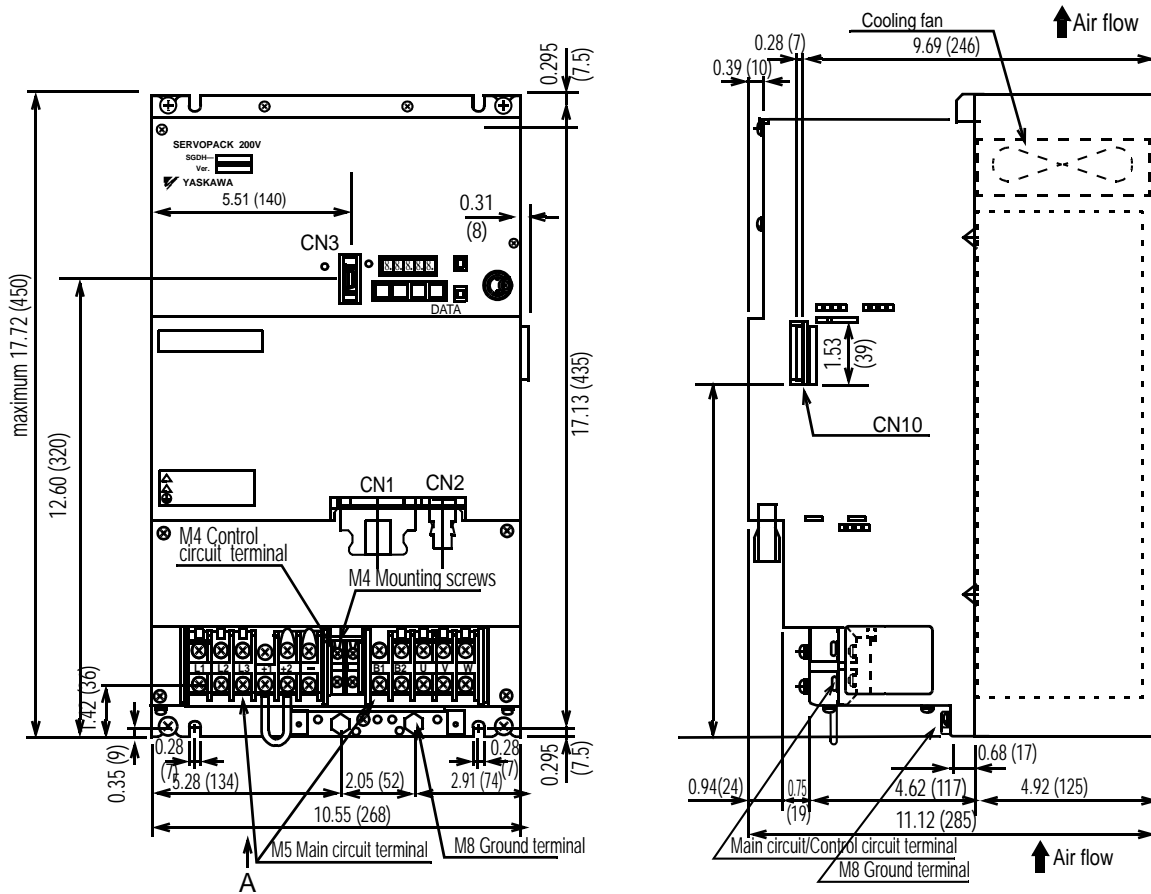
View A

Approximate Mass: 31.5lb (14.3kg)

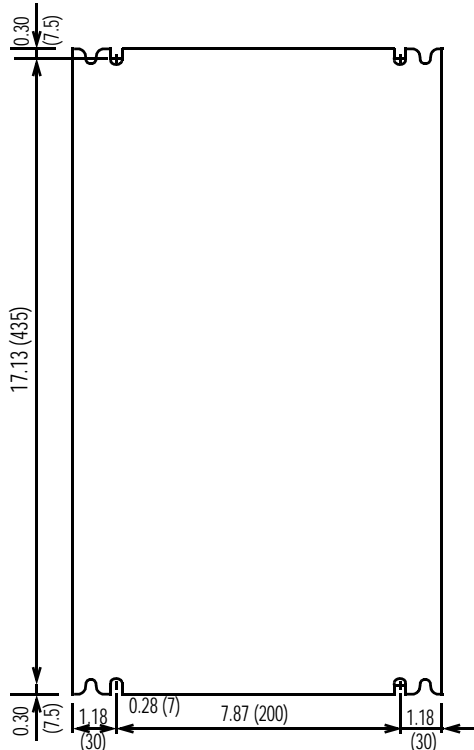
Mating connectors: See page 1

# 100/200V Sigma II Servo System

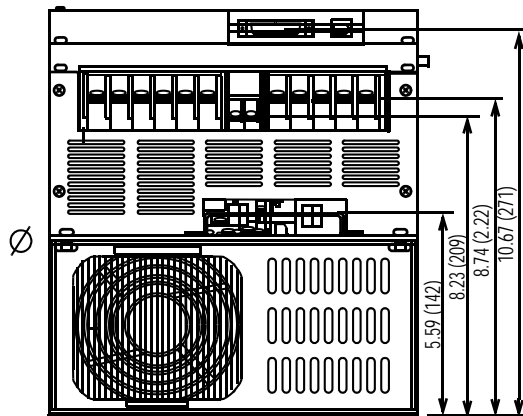
- SGDH-1AAE, SGDH-1EAE (200V Three-phase, 11.0kW, 15.0kW)



Mounting Hole Diagram



View A:



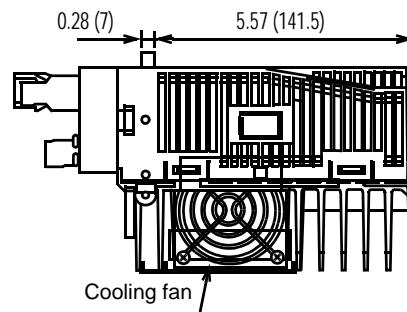
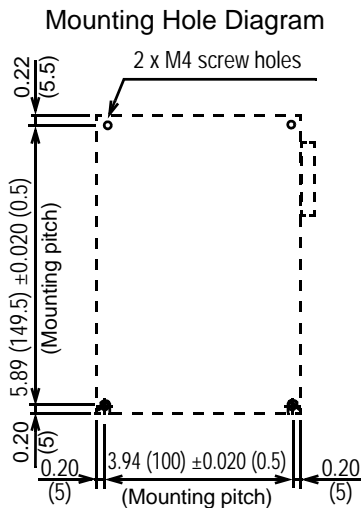
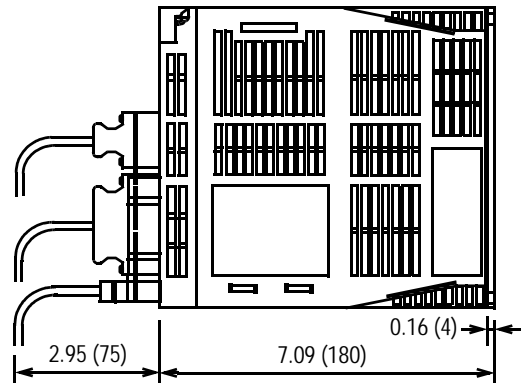
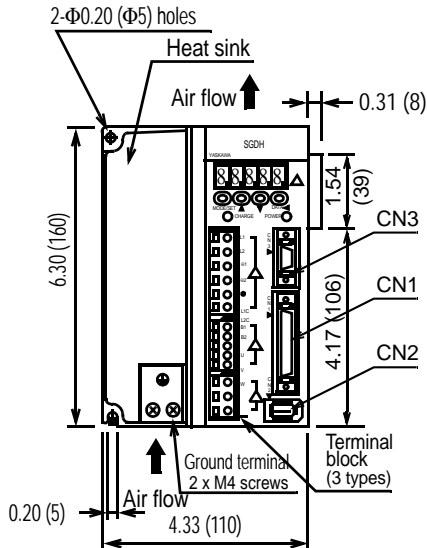
Approximate mass: 31.53lb (14.3kg)

Mating connectors: See page 1

## Dimensions in inches (mm)

### SGDH Servo Amplifier

- SGDH-05DE, -10DE, -15DE (400V Three-phase, 0.5kW to 1.5kW)



Approximate mass: 6.17lb (2.8kg)

Connectors on the amplifier (supplied):

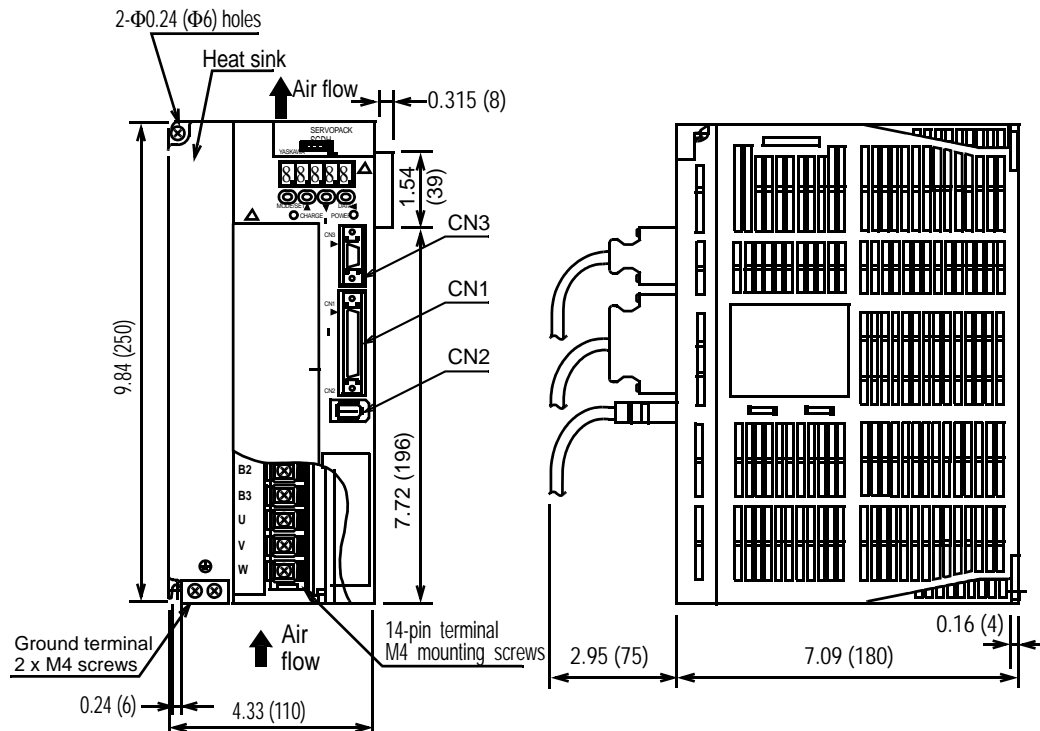
Connector Symbol	Servo Amplifier Receptacle	Manufacturer
CN1	10250-52A2JL	3M Company
CN2	53460-0611	Molex Co.
CN3	10214-52A2JL	3M Company

User needs to obtain the following:

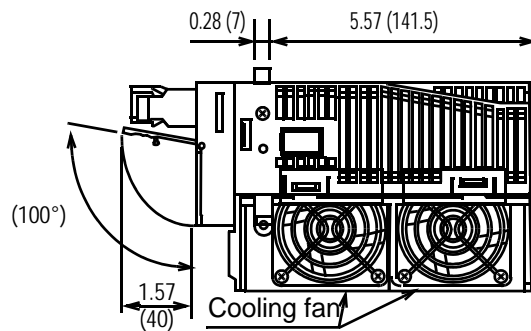
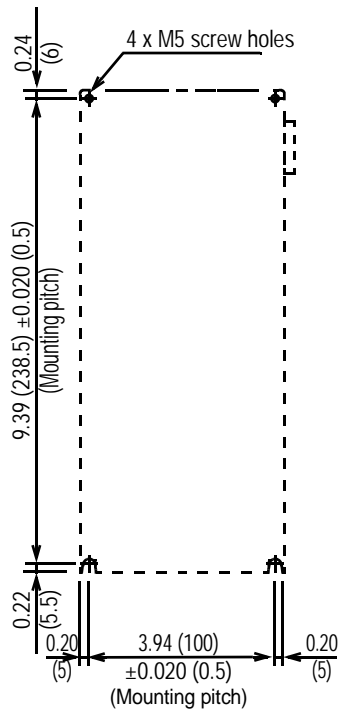
Connector Symbol	Mating Connector	Manufacturer
1CN	10150-3000VE connector 10350-52A0-008 case	3M Company
2CN	55100-0600	Molex Co.
3CN	JEZ-9S connector J-C9-2C case	JST Company

# 400V Sigma II Servo Systems

- SGDH-20DE, 30DE (400V Three-phase, 2.0kW, 3.0kW)



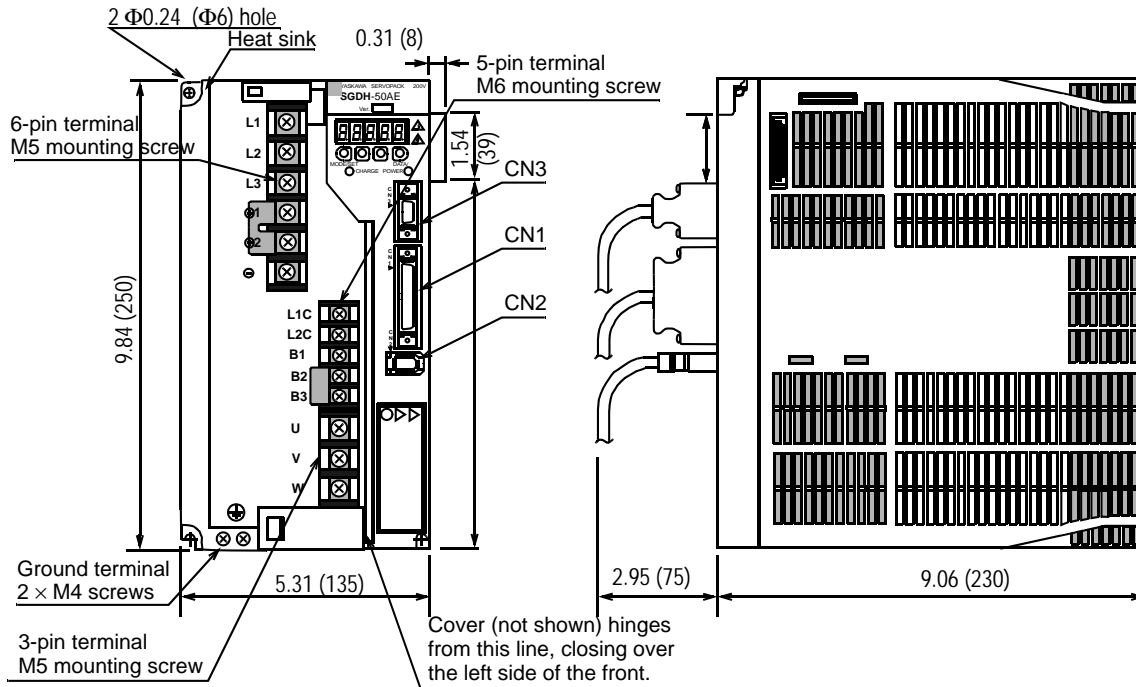
Mounting Hole Diagram



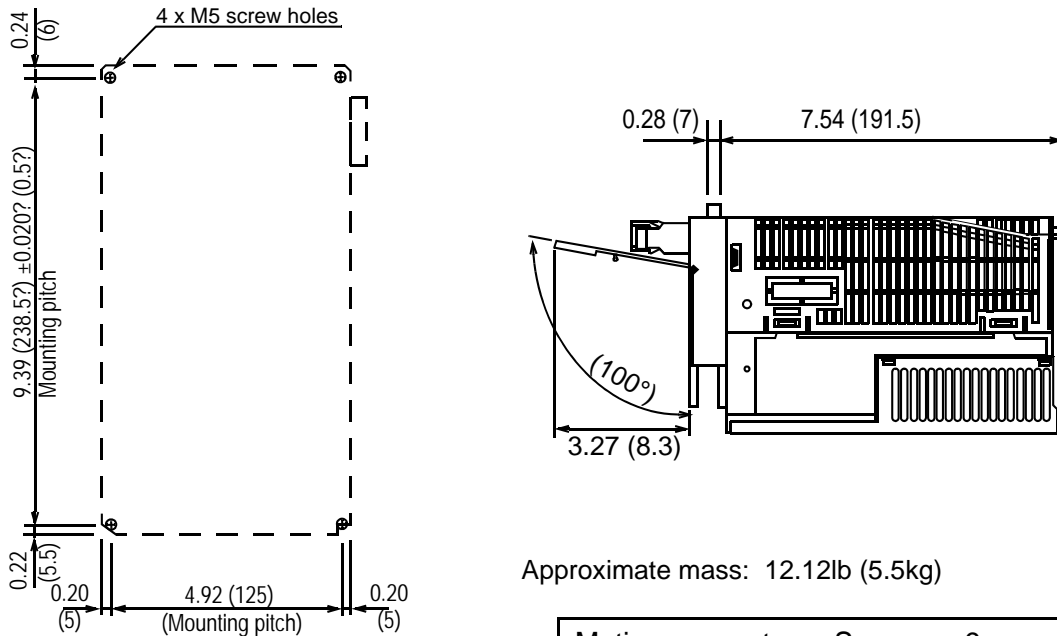
Approximate mass: 8.38lb (3.8kg)

Mating connectors: See page 9

- **SGDH-50DE (400V Three-phase, 5.0kW)**



Mounting Hole Diagram



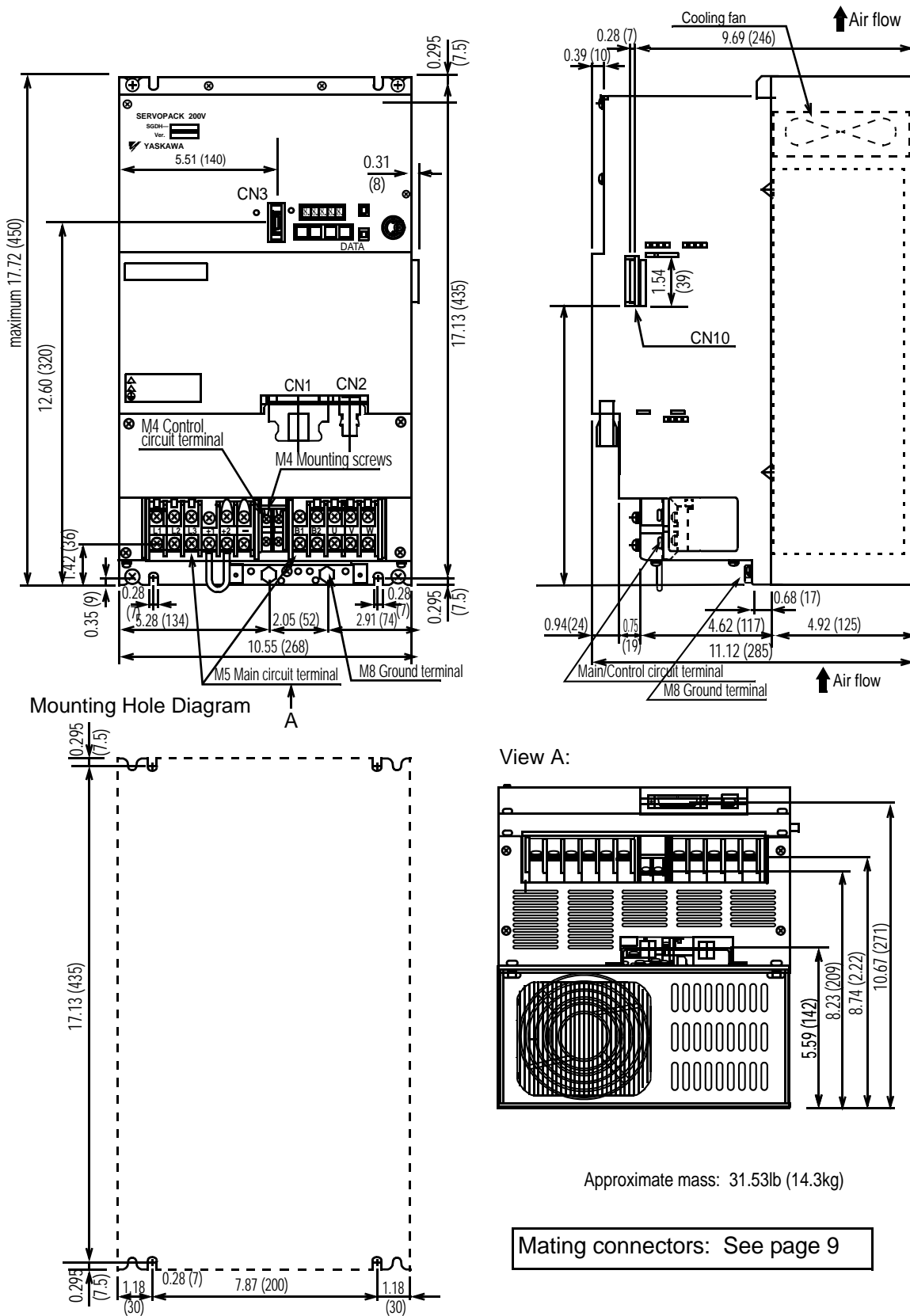
Approximate mass: 12.12lb (5.5kg)

Mating connectors: See page 9



# 400V Sigma II Servo Systems

- **SGDH-1ADE, SGDH-1EDE (400V Three-phase, 11.0kW, 15.0kW)**



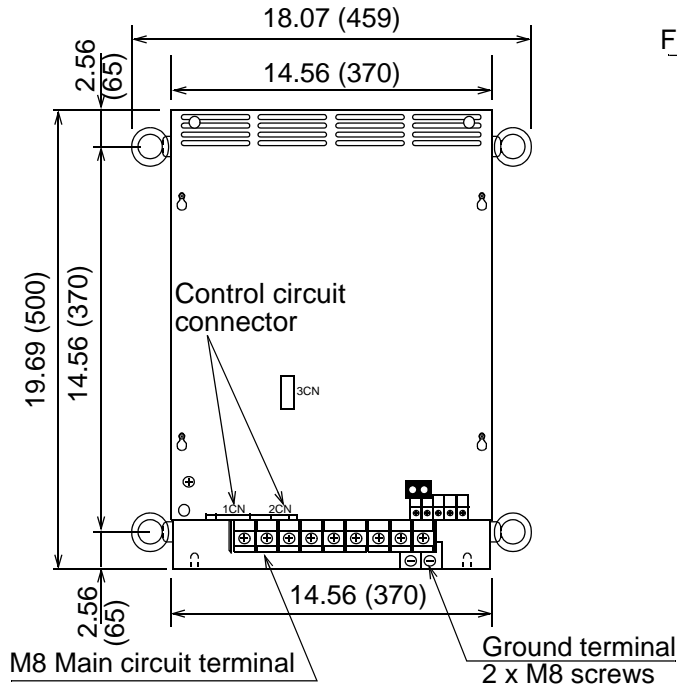
Approximate mass: 31.53lb (14.3kg)

Mating connectors: See page 9

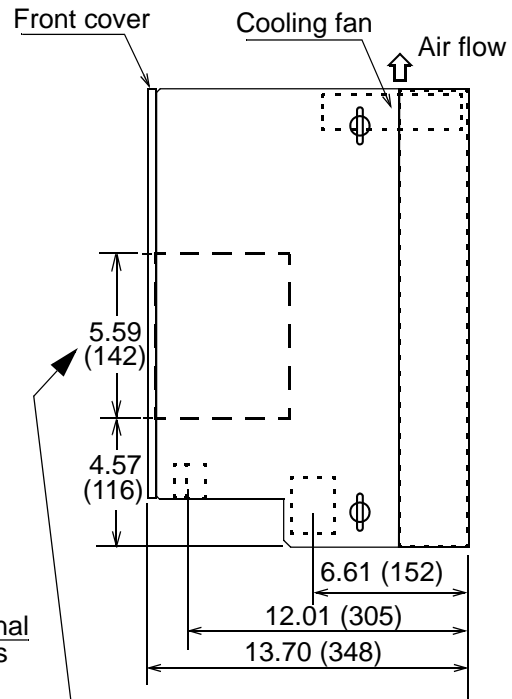
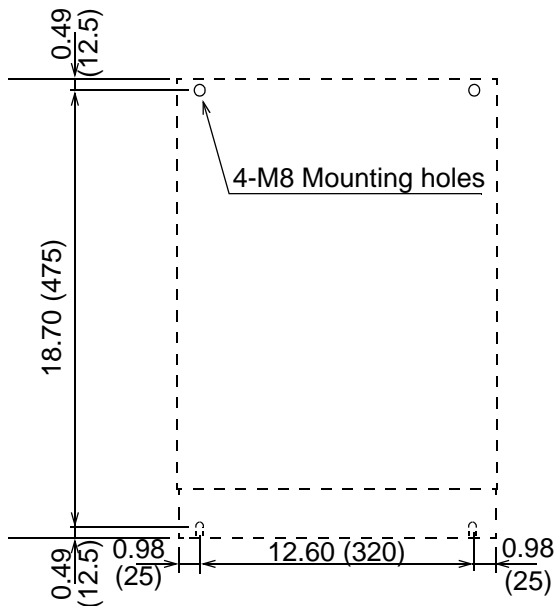
**SGDH**  
Servo Amplifiers

# 400V Sigma II Servo Systems

- **SGDH-2BDE ( 400V Three-phase, 22kW)**



Mounting Hole Diagram

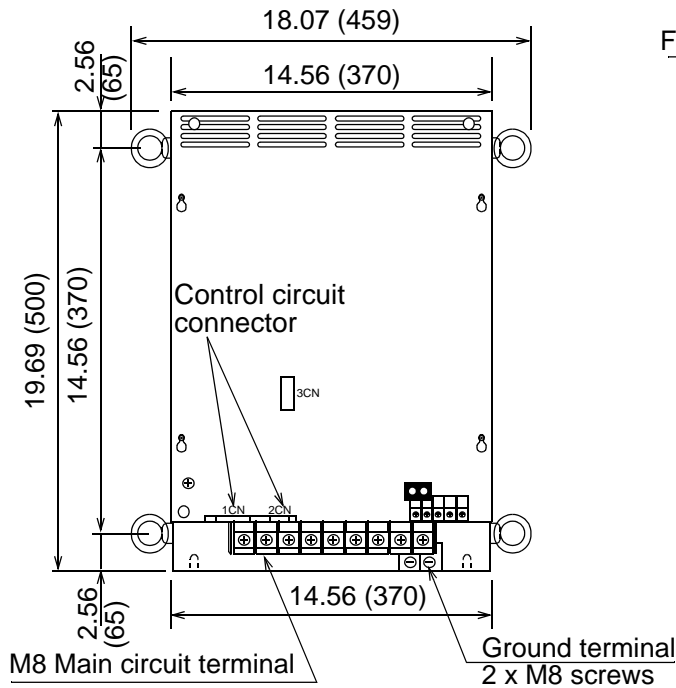


Note: Dimensions are for positioning of application module. Unlike other Sigma II amplifiers, the male connector is inset into the amplifier so that it does not protrude past the outside edge.

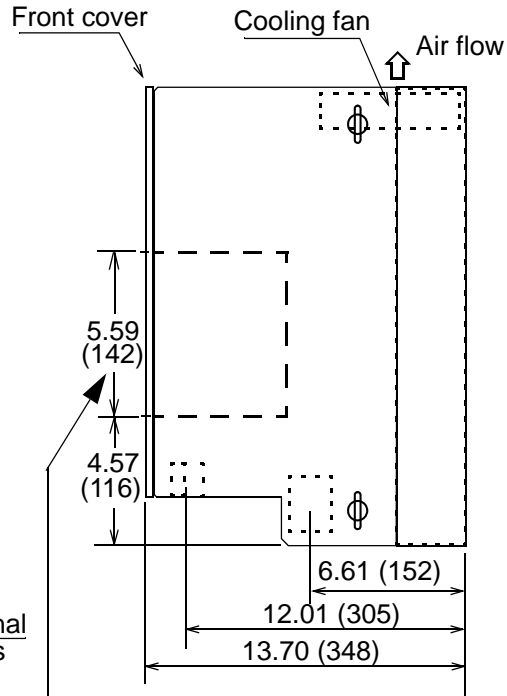
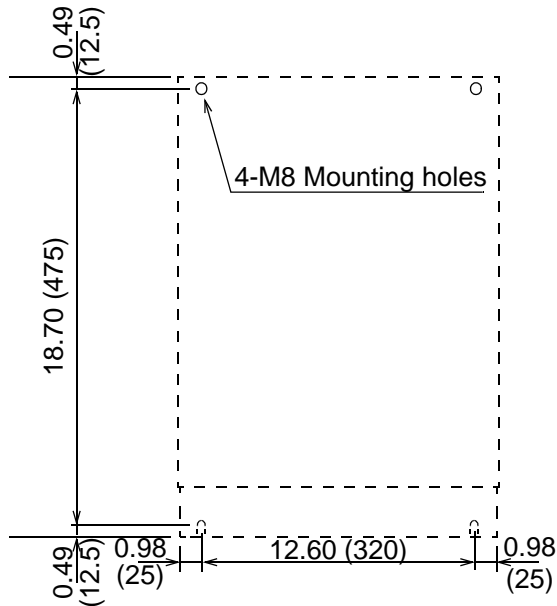
Approximate Mass: 88.2lb (40kg)

Mating connectors: See page 9

- **SGDH-3ZDE( 400V Three-phase, 30kW)**



Mounting Hole Diagram



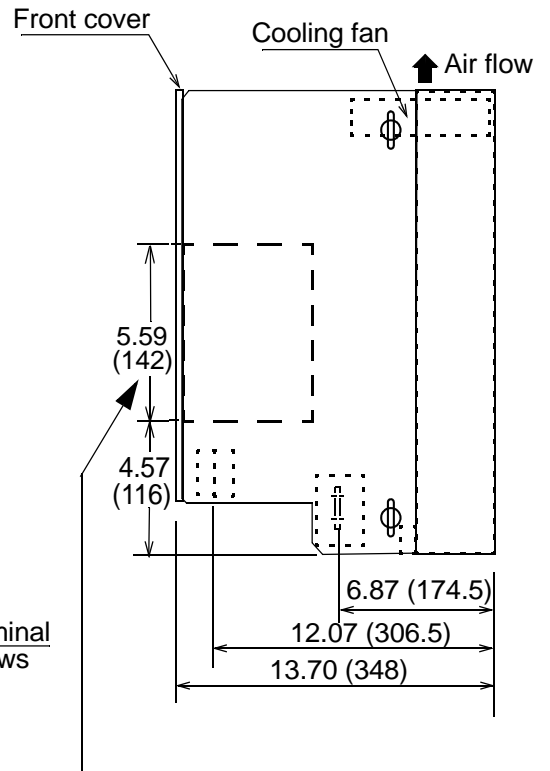
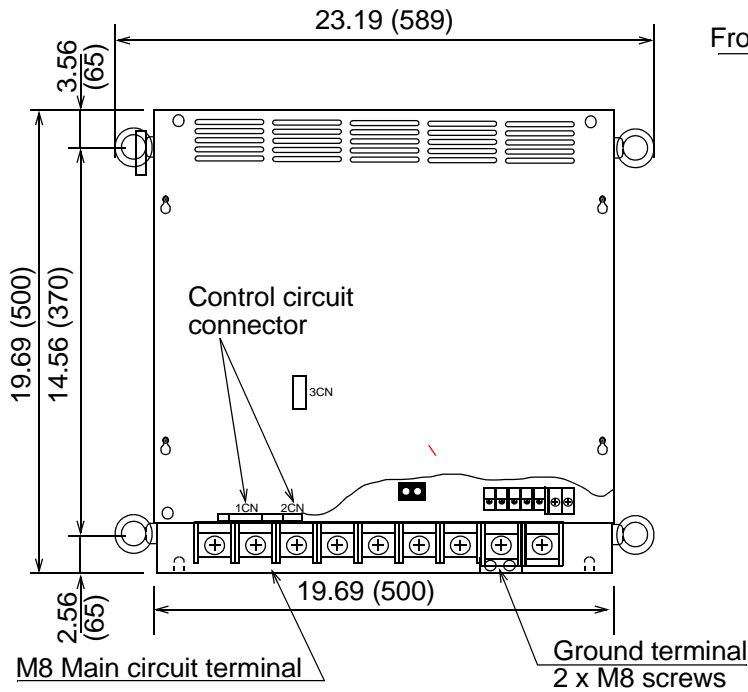
Note: Dimensions are for positioning of application module. Unlike other Sigma II amplifiers, the male connector is inset into the amplifier so that it does not protrude past the outside edge.

Approximate Mass: 82.2lb (40kg)

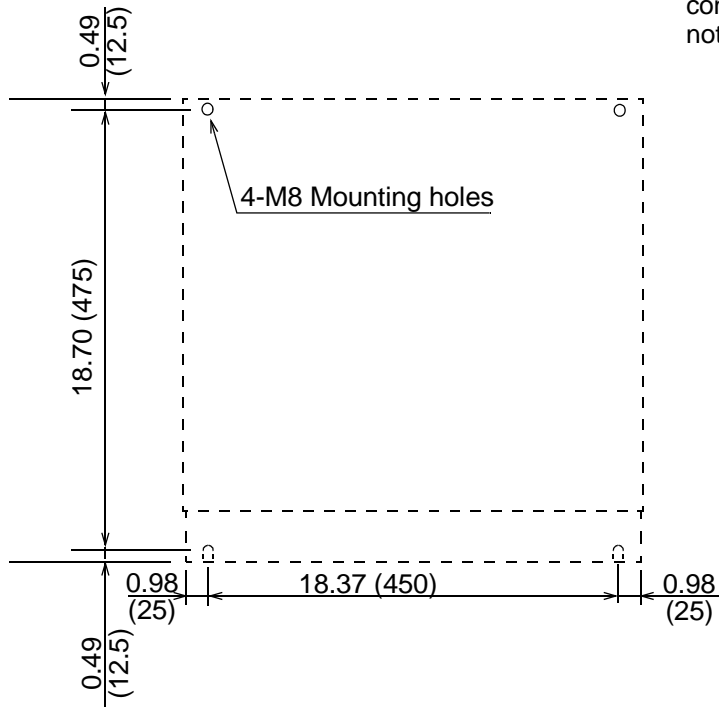
Mating connectors: See page 9

# 400V Sigma II Servo Systems

- **SGDH-3GDE ( 400V Three-phase, 37kW)**



Mounting Hole Diagram

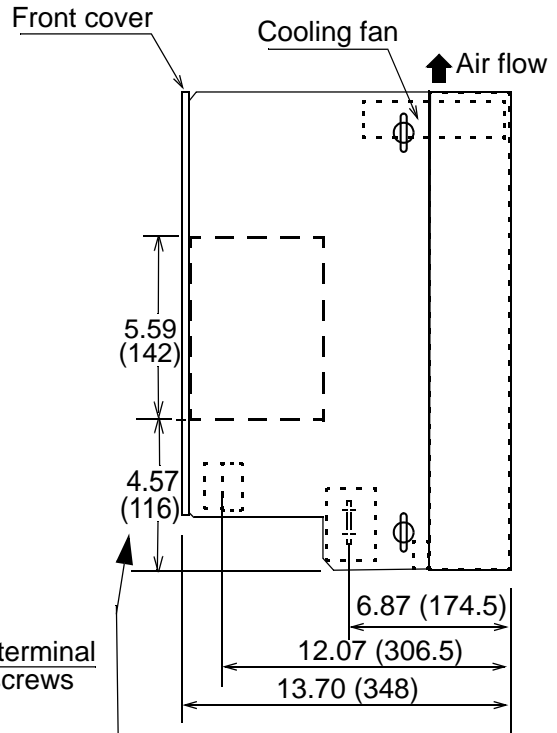
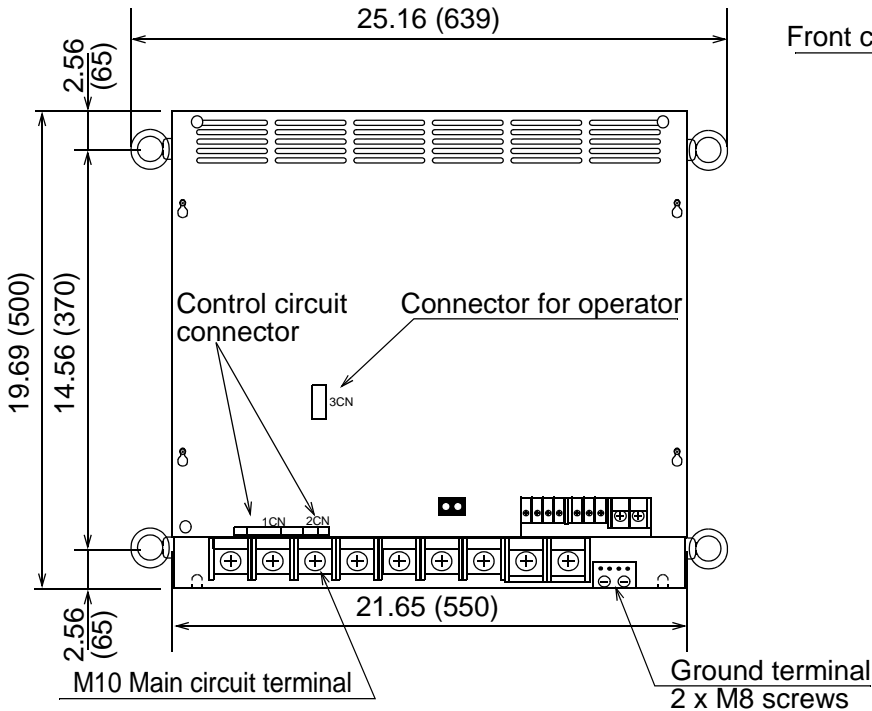


Note: Dimensions are for positioning of application module. Unlike other Sigma II amplifiers, the male connector is inset into the amplifier so that it does not protrude past the outside edge.

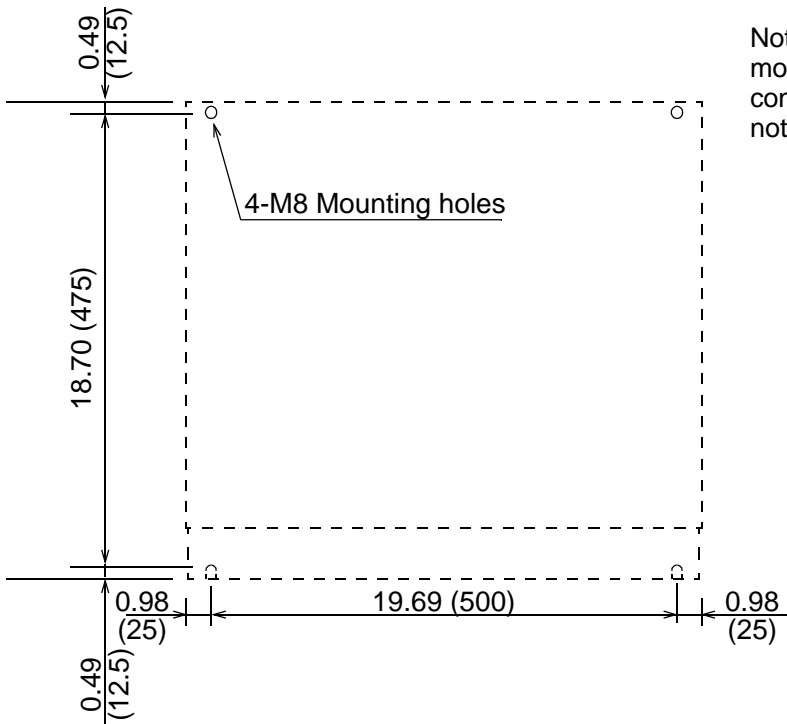
Approximate Mass: 132.3lb (60kg)

Mating connectors: See page 9

- **SGDH-4EDE ( 400V Three-phase, 45kW)**
- **SGDH-5EDE ( 400V Three-phase, 55kW)**



### Mounting Hole Diagram



Note: Dimensions are for positioning of application module. Unlike other Sigma II amplifiers, the male connector is inset into the amplifier so that it does not protrude past the outside edge.

Approximate Mass: 143.3lb (65kg)

Mating connectors: See page 9