

RIDE-THRU CAPACITOR OPTION

P/N 50179401

DESCRIPTION

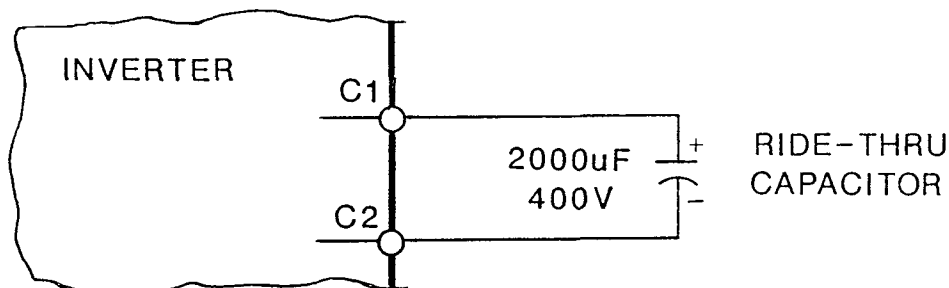
The standard 460V inverter unit has a momentary power failure (input undervoltage) ride-thru of 0.2 seconds. By the addition of this capacitor, ride-thru duration is extended to 2 seconds.

INSTALLATION

1. Locate a position in the inverter enclosure, or on the wall or panel close to the inverter unit, for mounting of the capacitor. Using the bracket as a template for hole spacing, drill and tap (6-32 or 8-32) three holes to mount bracket.
2. Mount bracket, using 6-32 or 8-32 mounting screws with flat and lock washers.
3. Place the capacitor in the bracket and tighten the tensioning screw.
4. Connect wire to capacitor and route (by shortest means) to the inverter unit. Connect the positive (+) side to the main circuit terminal marked "C1" and the negative (-) side to "C2". See illustration below.

CAUTION

DO NOT REVERSE THESE CONNECTIONS OR SERIOUS INJURY COULD OCCUR.



WARNING

DURING DRIVE OPERATION, THE VOLTAGE ACROSS THE CAPACITOR TERMINALS IS 320 VOLTS DC. ALWAYS DISCHARGE THE CAPACITOR BEFORE PERFORMING MAINTENANCE OR REPAIR OF THE INVERTER.

CHANGE RECORD					

DWG. NO. 02Y00025-0283
 SHEET 1 OF 1
 EFF. 3/7/89 (0)