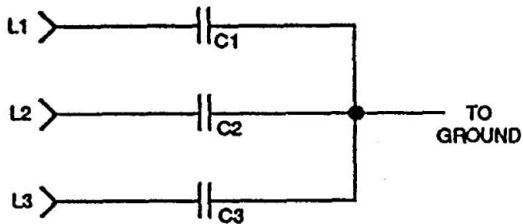


Noise Suppression Networks

Part No. 05P00325-0022 & -0023

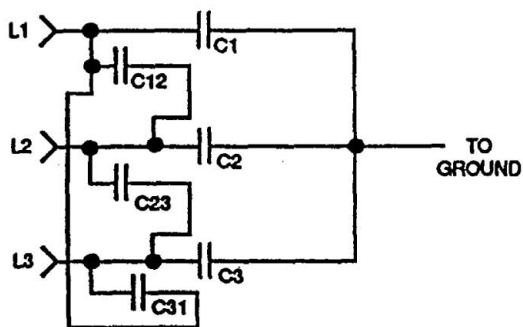
APPLICATION

A. A "WYE" network is used where only minor interference is generated, affecting such things as AM radio stations.



Part No. 05P00325-0022
3 Blue AWG 14 wires, 12" long ea.
1 Green AWG 14 wire, 14" long
Type EE, Teflon

B. A "WYE" and "DELTA" network is needed where more interference is generated.



Part No. 05P00325-0023
3 Yellow AWG 14 wires, 12" long ea.
1 Green AWG 14 wire, 14" long
Type EE, Teflon

INSTALLATION

1. Verify Drive input power is turned OFF.

WARNING

HAZARDOUS VOLTAGE CAN CAUSE SEVERE INJURY OR DEATH. LOCK ALL POWER SOURCES FEEDING DRIVE IN "OFF" POSITION.

2. Remove or open Drive front cover.
3. Verify "CHARGE" indicator lamp is not lit.
4. With a voltmeter, measure the voltage from incoming power terminals L1, L2, and L3, to ground (E) for less than 1 Vac.
5. Connect the blue or yellow wires of the noise suppressor to terminals L1, L2, and L3.

NOTE: If the lugs on the wires are not the right size for the terminal screws on your Drive, replace them with larger lugs (from those provided), using an approved crimping tool.

6. Connect the green wire of the noise suppressor to the Drive ground terminal (E).
7. After verifying that wire connections are tight, replace or close Drive front cover.

CHANGE RECORD				

DWG. NO. 02Y00025-0349
SHEET NO. 1 OF 1
EFF. 10/16/92 (m-df)