

DWG.NO. 900-011-334

Encoder Terminal Connection

No.	Description	Color
1	PG 5V	Red
2	PG 0V (GND)	Black
3	Phase A+	Blue
4	Phase A-	Blue/White
5	Phase B+	Yellow
6	Phase B-	Yellow/White
7	Phase Z	Purple
8	Phase U	Gray
9	Phase V	Green
10	Phase W	Orange
11	-	-
12	Frame Ground	Shield Wire

Motor Terminal Connection

No.	Description	Color
1	Phase U	Red
2	Phase V	White
3	Phase W	Blue
4	Frame Ground	Green/Yellow
5	Brake	Red
6	Brake	Black

Encoder cable: 6DIA. Black
 UL20276, AWG22 (Red, Black)
 AWG26 (Except for Red, Black)

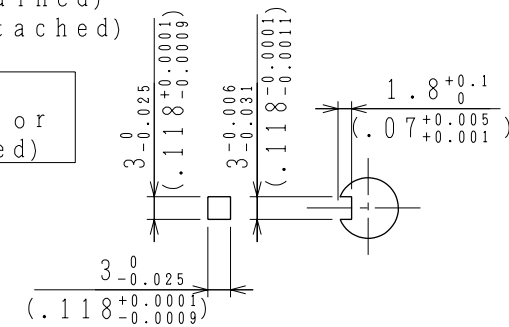
Plug : 5559-12P-210 (Molex)
 Terminal : 5558T2 (chained) or 5558T2L (detached)

Connected to
 Receptacle : 5557-12R-210
 Terminal : 5556T2 (chained) or 5556T2L (detached)

Plug : 5559-06P-210 (Molex)
 Terminal : 5558T (chained) or [No.1 to 3, 5, 6] 5558TL (detached)
 Grounding Pin : 30490-2002 (chained) [No.4] 30490-2012 (detached)

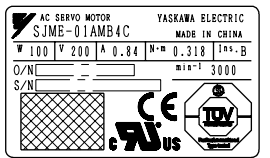
Connected to
 Receptacle : 5557-06R-210
 Terminal : 5556T (chained) or 5556TL (detached)

Motor leads
 UL1828, AWG20
 Protective tube: 7DIA. Black

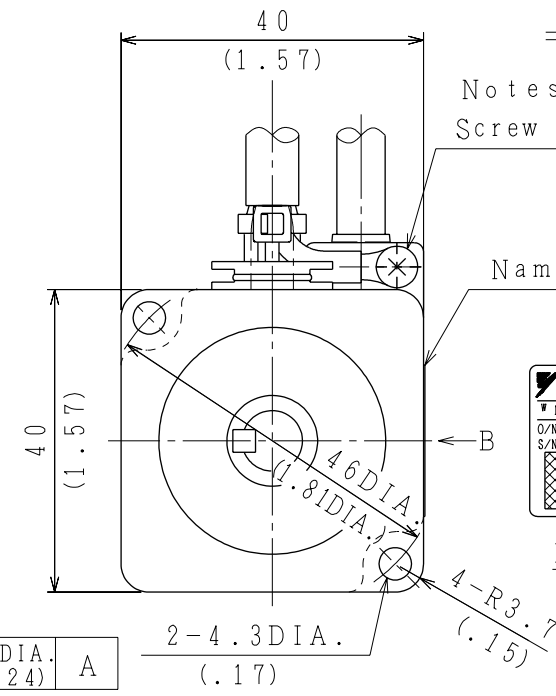
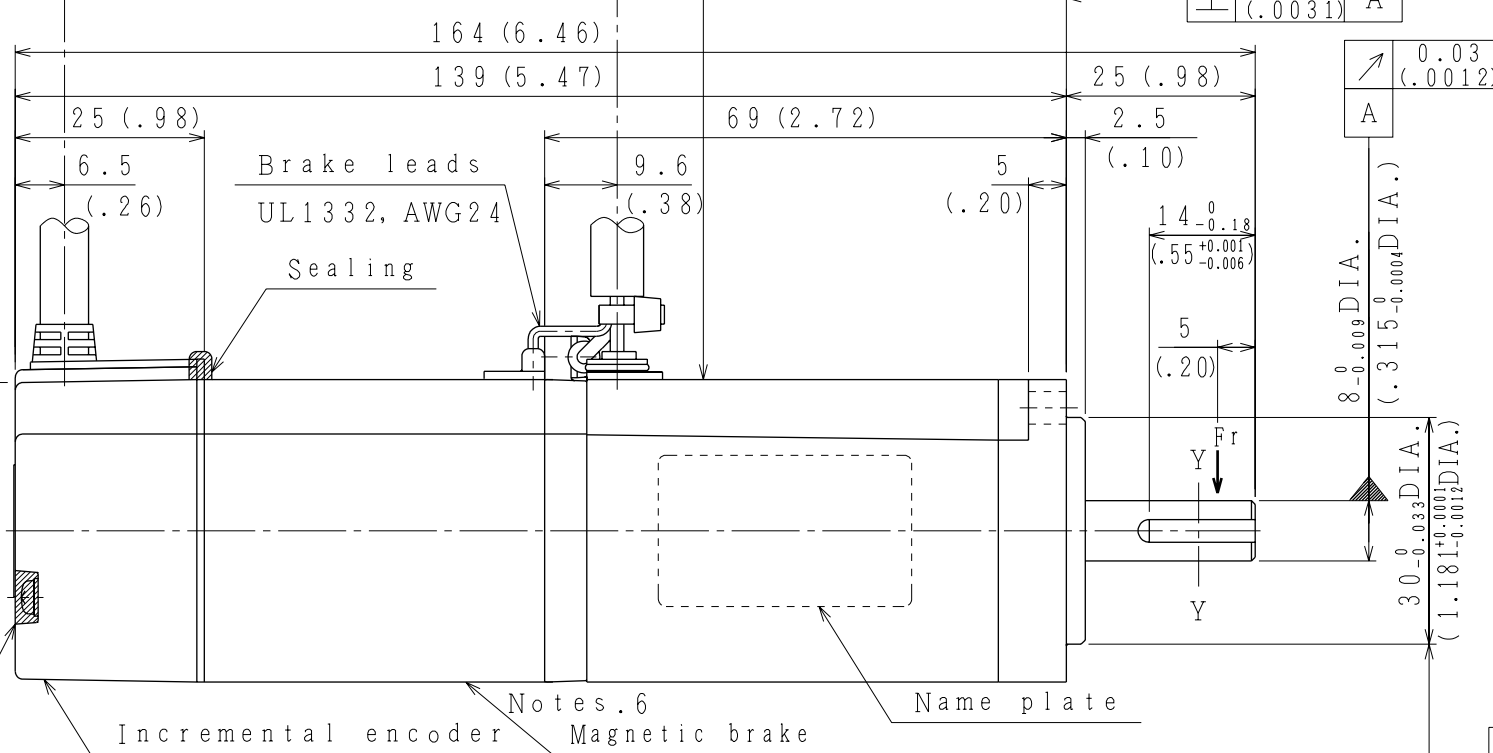
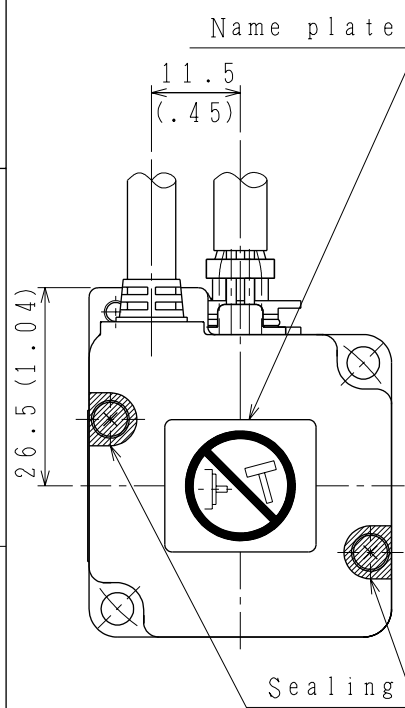


Key Keyway
 View Y-Y

Notes.5
 Screw for Frame ground



Name plate
 View B



Notes.6
 Magnetic brake
 Non-excitation operation type
 Power supply 24VDC
 Holding brake torque
 ≥ Motor rated torque

- Notes: 1. Motor specifications : DP0491511 (200W)
 2. Encoder specifications: DP0494062
 3. Dimensions of the keyway are conformed to JIS (Japanese Industrial Standard) No. B1301 "Sunk keys and their corresponding keyways (close keys)".
 4. Degrees of protection: IP55 (except for connectors and drive end side)
 5. Do not remove the screw connecting motor frame and frame ground lead.
 6. Magnetic brake must be used for only position holding.
 7. All dimensions are in millimeters (inches).

Type	Rated Output (W)	Rated Torque (N·m (lb·in))	Time Rating	Rated Rotation Speed (min ⁻¹)	Weight (kg (lb))	Allowable Radial Load Fr (N (lb))	Allowable Thrust Load (N (lb))
SJME-01AMB4C	100	0.318 (2.81)	Continuous	3000	0.7 (1.5)	78 (17.5)	54 (12.1)

F	YASKAWA 株式会社 安川電機		SCALE 1:1	DRAW. T. Watanabe	TITLE AC SERVO MOTOR JUNMA SERIES (100W)	DATE MAR. 22. '07	REV.
				CHECK N. Yoshizawa		DWG. NO. 900-011-334	
				APPR. K. Aoki		SIZE A3	