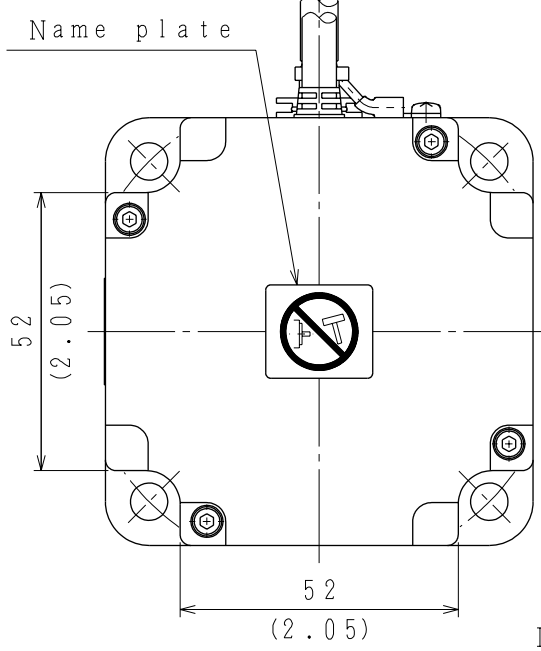
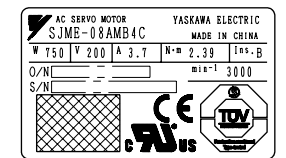
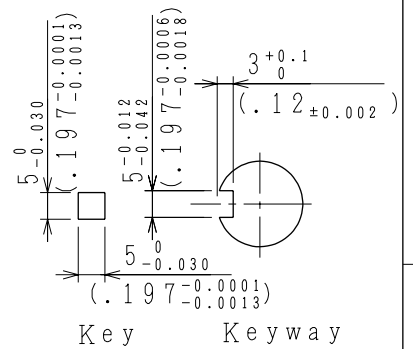
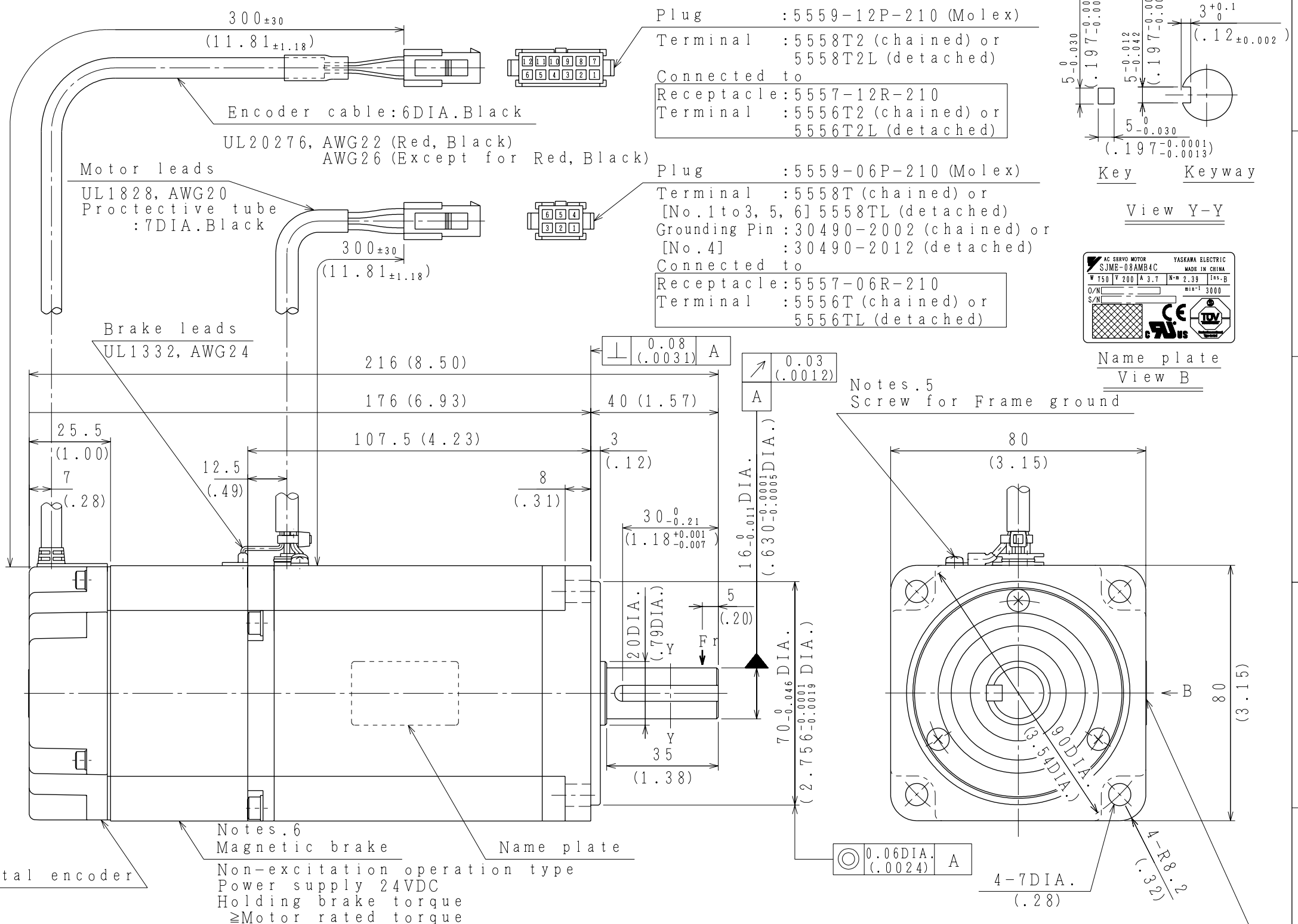


Encoder Terminal Connection			Motor Terminal Connection		
No.	Description	Color	No.	Description	Color
1	PG 5V	Red	1	Phase U	Red
2	PG 0V (GND)	Black	2	Phase V	White
3	Phase A+	Blue	3	Phase W	Blue
4	Phase A-	Blue/White	4	Frame Ground	Green/Yellow
5	Phase B+	Yellow	5	Brake	Red
6	Phase B-	Yellow/White	6	Brake	Black
7	Phase Z	Purple			
8	Phase U	Gray			
9	Phase V	Green			
10	Phase W	Orange			
11	-	-			
12	Frame Ground	Shield Wire			



Type	Rated Output (W)	Rated Torque (N·m (lb·in))	Time Rating	Rated Rotation Speed (min ⁻¹)	Weight (kg (lb))	Allowable Radial Load Fr (N (lb))	Allowable Thrust Load (N (lb))
SJME-08AMB4C	750	2.39 (21.1)	Continuous	3000	3.5 (7.7)	392 (88.1)	147 (33.0)

Notes: 1. Motor specifications : DP0491511 (200V)
 2. Encoder specifications: DP0494062
 3. Dimensions of the keyway are conformed to JIS (Japanese Industrial Standard) No.B1301 "Sunk keys and their corresponding keyways (close keys)".
 4. Degrees of protection: IP55 (except for connectors and drive end side)
 5. Do not remove the screw connecting motor frame and frame ground lead.
 6. Magnetic brake must be used for only position holding.
 7. All dimensions are in millimeters (inches).