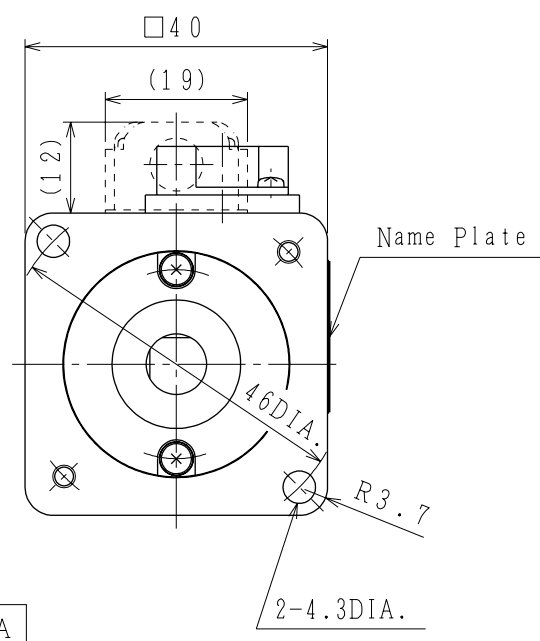
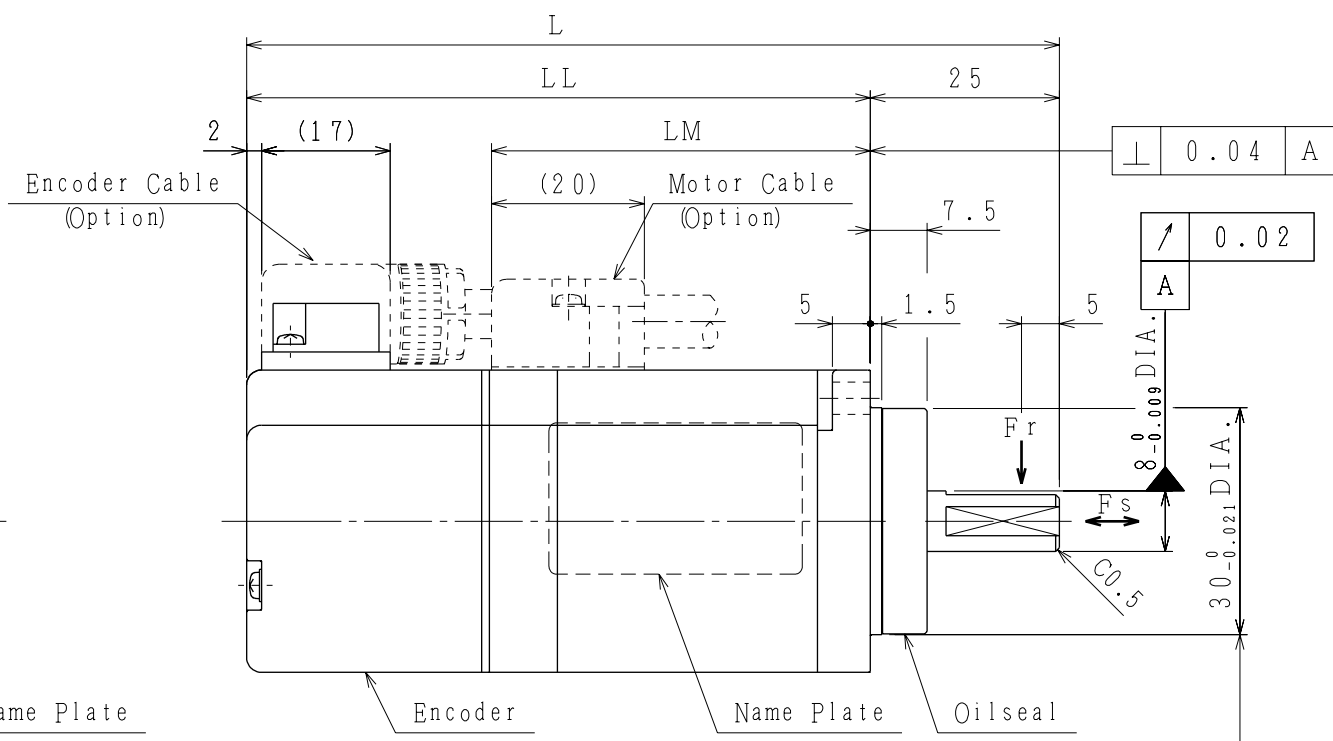
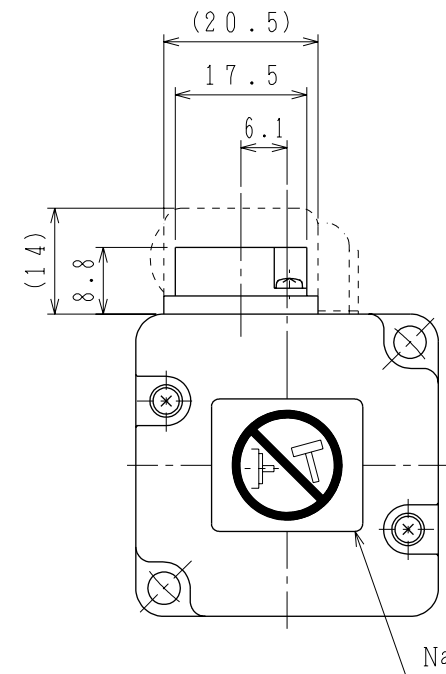
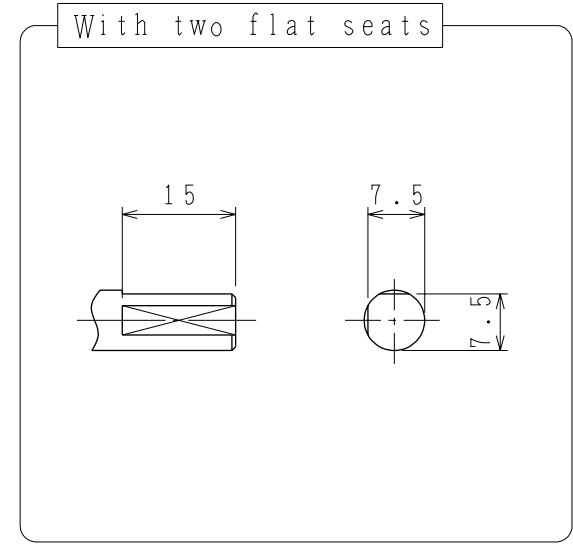
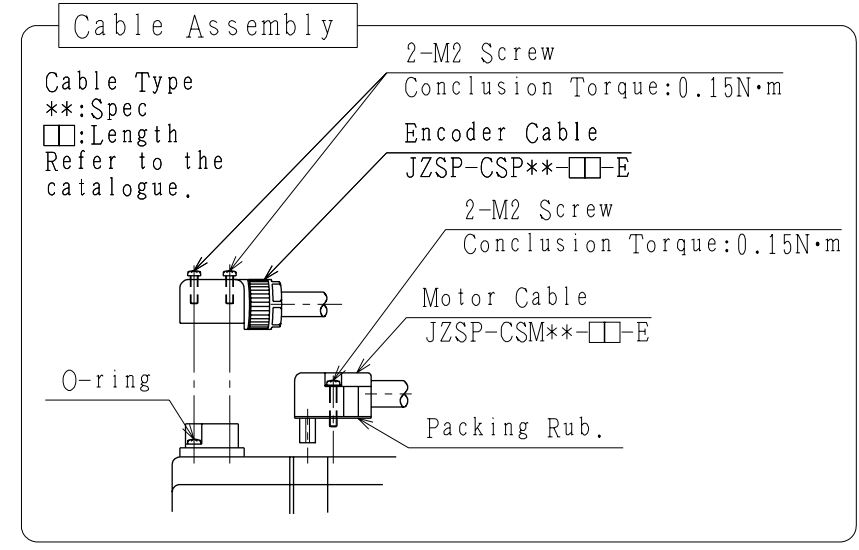
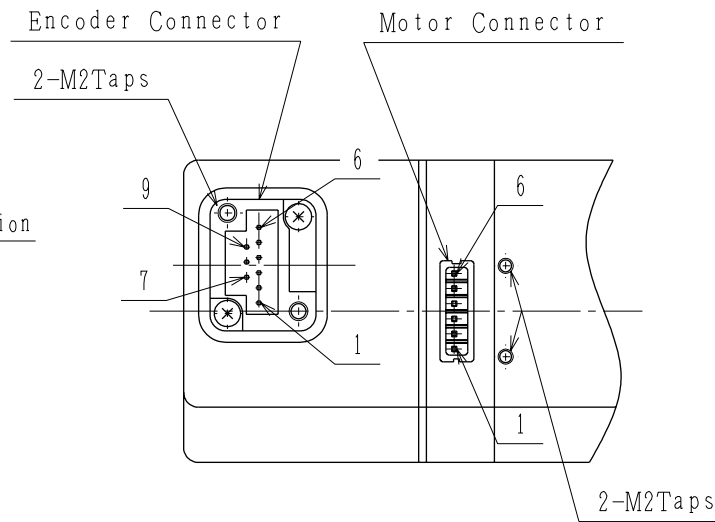




Encoder Terminal Connection Motor Terminal Connection

1	-
2	-
3	PG 0 V
4	PS
5	*PS
6	PG 5 V
7	-
8	0 BAT
9	BAT
Con. Case	Frame Ground

1	Frame Ground
2	Phase W
3	Phase V
4	Phase U
5	-
6	-



- Notes)
- Motor Specifications :900-013-718
 - Encoder Specifications:900-009-648 (20bit Absolute)
 - Motor cable and encoder cable are not packed.
 - Degrees of Protection:IP65 (Case of our standard cable attaching) Except for drive end side.
 - At the time of delivery of motor, each of connectors are attached protective parts.Please remove them before cable attaching.
 - Do not touch each of the connector pins directly.It cause failure.
 - Motor with oilseal should be operated under the following conditions.
 - Optimum oil level should be bellow oilseal lip.
 - Oil should be splashed to oilseal.
 - Please protect the drive end side by the cover when using the motor on axis so that oil should not collect in the oilseal lip.
 - All dimensions are in millimeters.

Item No.	Type	L (mm)	LL (mm)	LM (mm)	Weight (kg)	Voltage (Vrms)	Rated Output (W)	Rated Torque (N·m)	Rated Armature Current (Arms)	Rated Rotation Speed (min ⁻¹)	Thermal Class	Time Rating	Allowable Radial Load Fr(N)	Allowable Thrust Load Fs(N)
1	SGMJV-A5A3ABS	94	69	37	0.3	200 (3 Phase)	50	0.159	0.61	3000	B	CONT.	78	54
2	SGMJV-01A3ABS	107.5	82.5	50.5	0.4		100	0.318	0.84					

REFERENCE ONLY



TITLE AC SERVOMOTOR ΣV SERIES
SGMJV形 50, 100W

REV.
DWG.NO. **900-035-553**