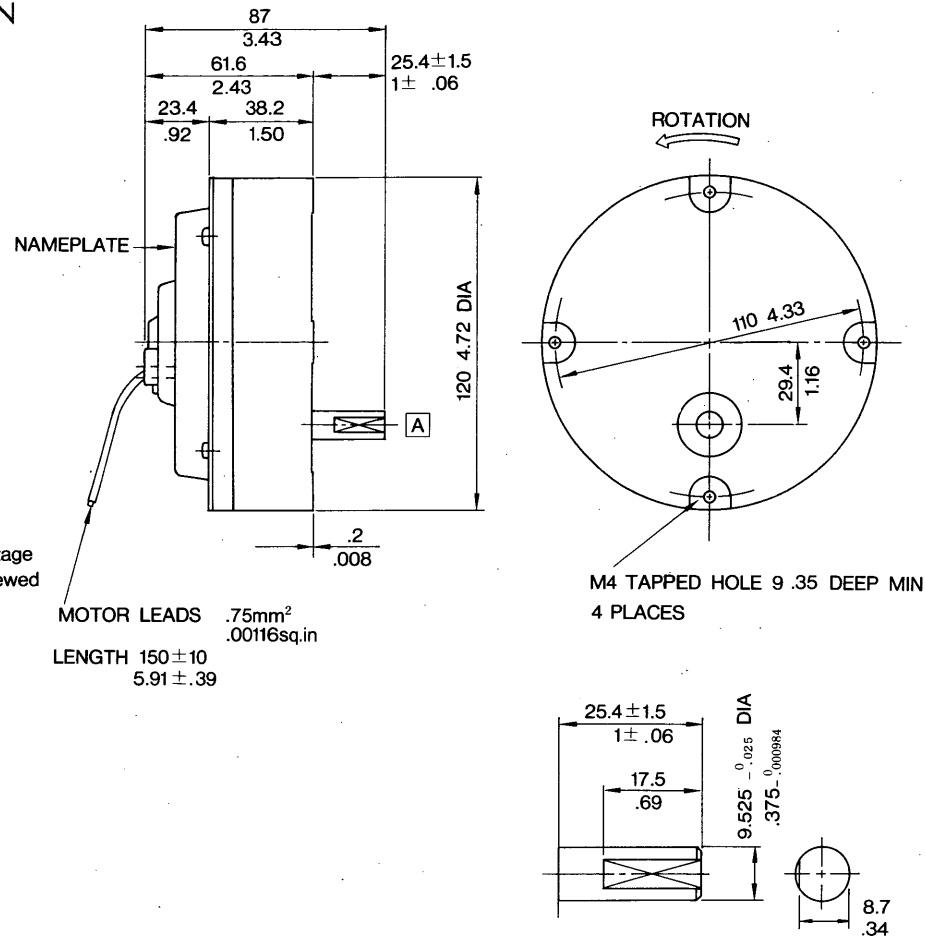


Print Motors (FERRITE TYPE)
Low Noise Series Type UGPMED-09AAON

DIMENSIONS in mm inch

UGPMED-09AAON



NOTE:
 CCW rotation with positive voltage applied to (RED) lead when viewed from drive "A" end.

• Weight: 1.2kg 2.6lb

MOTOR LEADS .75mm²
 .00116sq.in
 LENGTH 150±10
 5.91±.39

YASKAWA *A Better Tomorrow for Industry through Automation*
YASKAWA Electric Mfg. Co., Ltd.

TOKYO OFFICE Ohtemachi Bldg., 1-6-1 Ohtemachi, Chiyoda-ku, Tokyo, 100 Japan
 Phone (03) 3284-9111, -9415 Telex YASKAWA J33530 Fax (03) 3284-9034

SEOUL OFFICE Seoul Center Bldg., 91-1, So Kong-Dong, Chung-ku, Seoul, Korea
 Phone (02) 776-7844 Fax (02) 753-2639

SINGAPORE OFFICE CPF Bldg., 79 Robinson Road No. 24-03, Singapore 0106
 Phone 2217530 Telex (87) 24890 YASKAWA RS Fax (65) 224-5854

TAIPEI OFFICE Union Commercial Bldg., 137, Nanking East Road, Sec. 2, Taipei, Taiwan
 Phone (02) 507-7065, -7732 Fax (02) 506-3837

YASKAWA ELECTRIC AMERICA, INC. : SUBSIDIARY

Chicago Office (Head Office) 3160 MacArthur Blvd., Northbrook, Illinois 60062-1917, U.S.A.
 Phone (708) 291-2340, 291-2348 Telex (230) 270197 YSKW YSNC NBRK Fax (708) 498-2430, 480-9731

Los Angeles Office 7341 Lincoln Way, Garden Grove, California 92641, U.S.A.
 Phone (714) 894-5911 Telex (230) 678396 YASKAWAUS TSTN Fax (714) 894-3258

New Jersey Office 30 Two Bridges Road, Fairfield, New Jersey 07006, U.S.A.
 Phone (201) 575-5940 Fax (201) 575-5947

MOTOMAN INC.

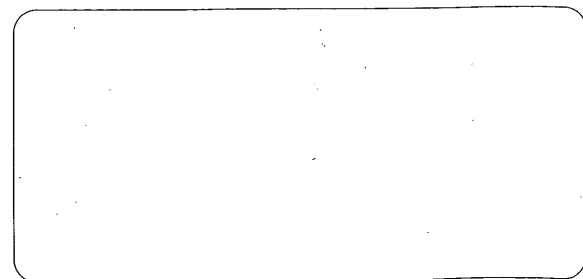
Headquarter 805 Liberty Lane West Carrollton, Ohio 45449, U.S.A.
 Phone (513) 847-6200 Fax (513) 847-6277

Tech. Center 1701 Northfield Drive, Rochesterhills, Michigan 48309-3819, U.S.A.
 Phone (313) 853-0440, 41, 42, 43 Fax (313) 853-0444

Due to ongoing product modification/improvement, data subject to change without notice.

YASKAWA ELECTRIC EUROPE GmbH : SUBSIDIARY
 Niederhöchstädter Straße 71-73, W 6242 Kronberg-Oberhöchstadt, Germany
 Phone (06173) 640071, 640072, 640073 Telex 415660 YASE D Fax (06173) 68421

YASKAWA ELÉTRICO DO BRASIL COMÉRCIO LTDA. : SUBSIDIARY
 Av. Brig. Faria Lima, 1664-cj. 721/724, Pinheiros, São Paulo-SP, Brasil CEP-01452
 Phone (011) 813-3933, 813-3694 Telex (011) 82869 YSKW BR Fax (011) 815-8795



© Printed in Japan March 1991 89-10 1T

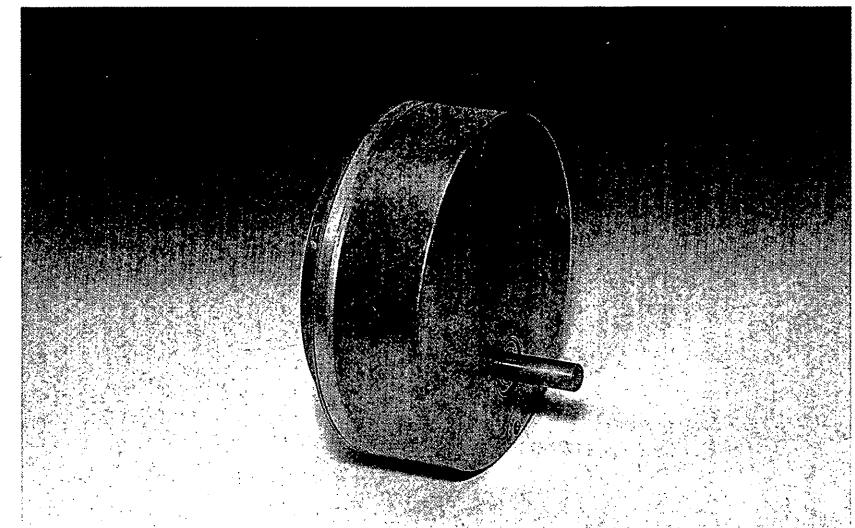


DC SERVOMOTORS WITH SPEED REDUCER

Print Motors (FERRITE TYPE)
LOW NOISE SERIES
 Type UGPMED-09AAON

Yaskawa ferrite type Print Motor with speed reducer features compact shaped, low cost, and high durability, so that it is employed for general purposes, such as industry, business machines, and domestic appliances.

Low Noise Series aims at low cost, light weight, and pancake shaped-speed reducer. This motor is popular for medical equipment that requires a quiet environment.



589-150

FEATURES

- Low cost
- Remarkable durability
- Reduced gear noise through resin gear
- Compact design, light weight, and pancake shaped
- Can operate with battery power supply



The Deming Application Prize Medal Awarded to Yaskawa in 1984 for Exceptional Achievement in Industrial Performance



APPLICATIONS

Medical Equipment : Artificial Heart and Lung Systems,
 Artificial Kidney Systems

RATINGS AND SPECIFICATIONS

Time Rating : Continuous

Insulation Class : Type B

Insulation-Proof Pressure : 500VAC/min

Protection Method : Totally-Enclosed Self-Cooled (Type EE)

Ambient Temperature : -10 to +40°C

Specifications	Motor Type	UGPMED-09AAON			
Gear Ratio		1/25	1/50	1/75	1/100
Rated Output	W	16			
Rated Torque	N·m	0.98	1.96	2.94	3.92
	oz·in	139	278	417	556
Peak Torque	N·m	1.47	2.94	4.41	5.88
	oz·in	208	417	625	833
Rated Speed	r/min	160	80	53	40
Maximum Speed	r/min	200	100	67	50
Rated Armature Voltage	V	13			
Rated Armature Current	A	3			
Rated Power Rate	kW/s	0.06			
Rotor Moment of Inertia	kg·m ²	0.38 × 10 ⁻⁴			
	oz·in·s ²	5.38 × 10 ⁻³			

ORDERING INFORMATION

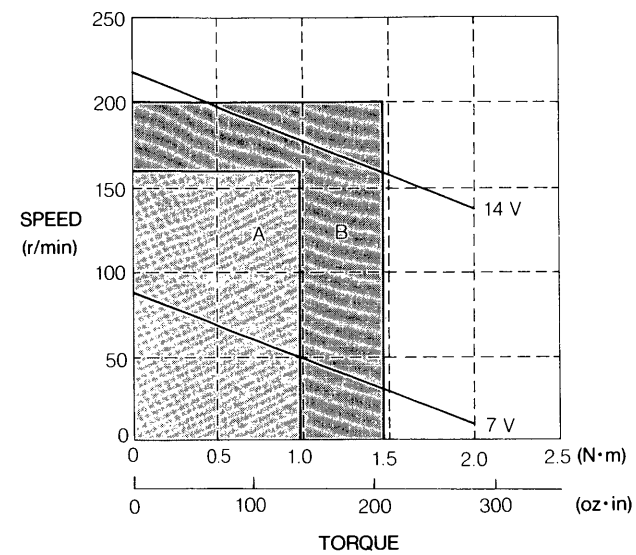
- Application
- Type
- Ratings : gear ratio, output, voltage, current, torque, speed
- Environmental conditions : ambient temperature, location
- Others to be specified

MOTOR PERFORMANCE INFORMATION

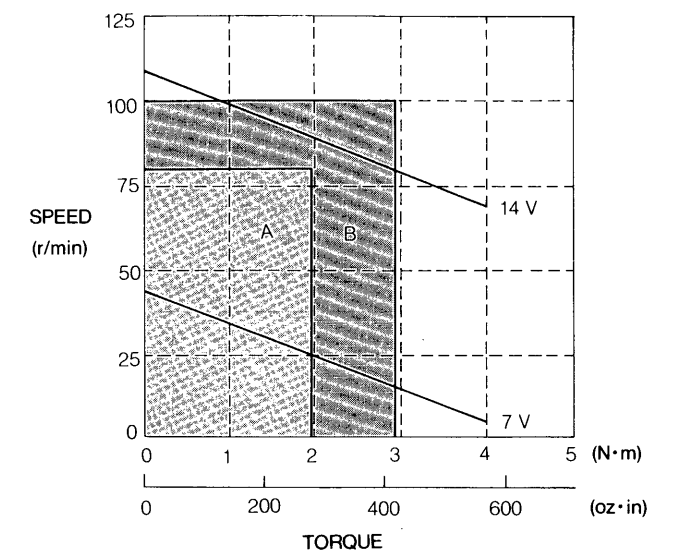
▣ A : Continuous Duty Zone
 ▣ B : Intermittent Duty Zone

Typical at 100°C
 (armature winding temp.)

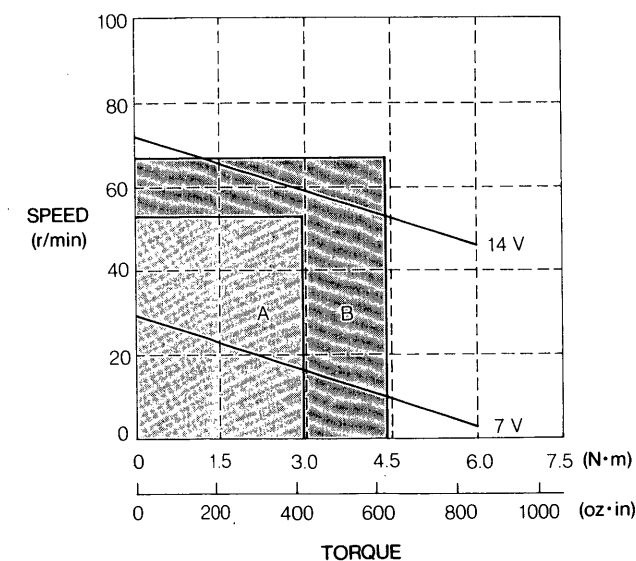
Reduction Ratio 1 : 25



Reduction Ratio 1 : 50



Reduction Ratio 1 : 75



Reduction Ratio 1 : 100

