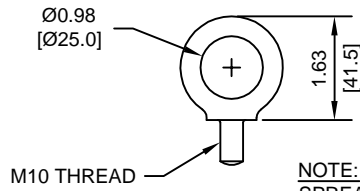


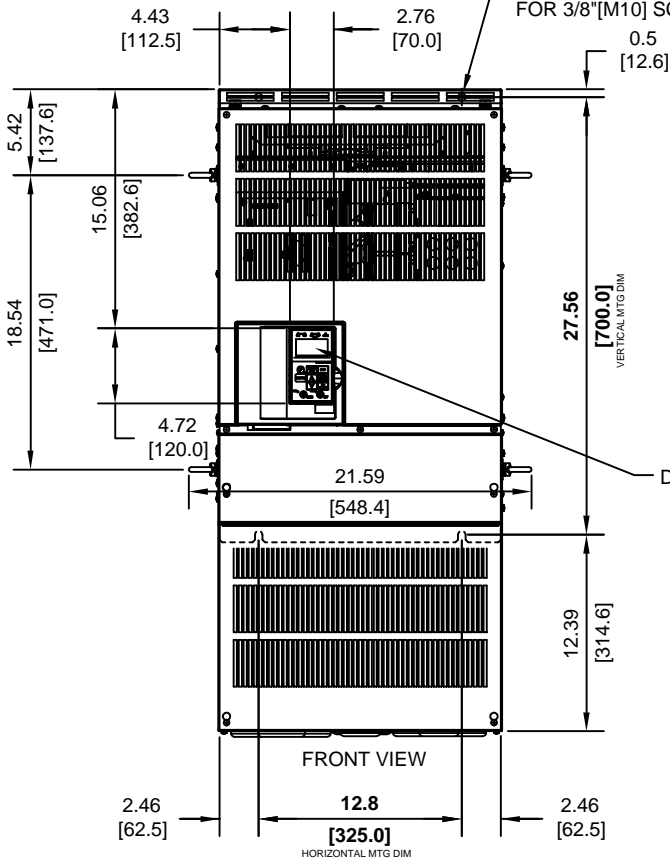
(2) EXTERNAL COOLING FANS

LIFTING AND EYEBOLT DETAILS



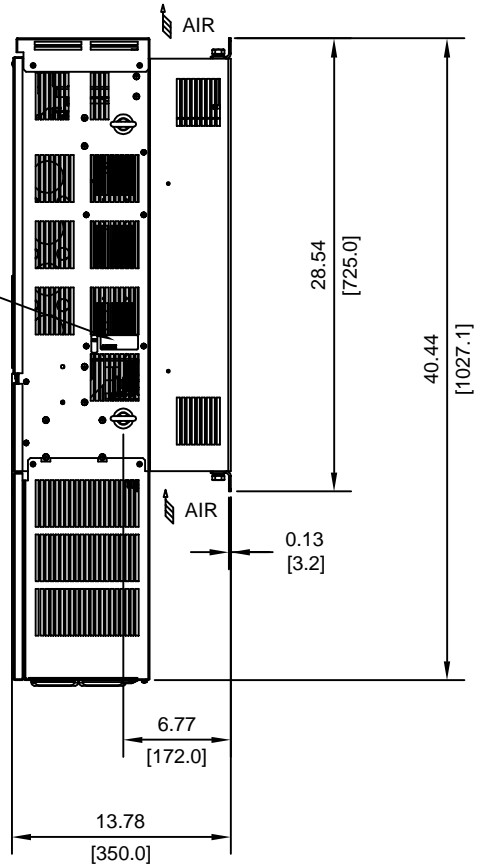
NOTE:
SPREADER BAR REQUIRED TO AVOID DAMAGE DURING LIFTING

(4)-MOUNTING HOLES FOR 3/8" [M10] SCREWS
0.5 [12.6]



NAMEPLATE

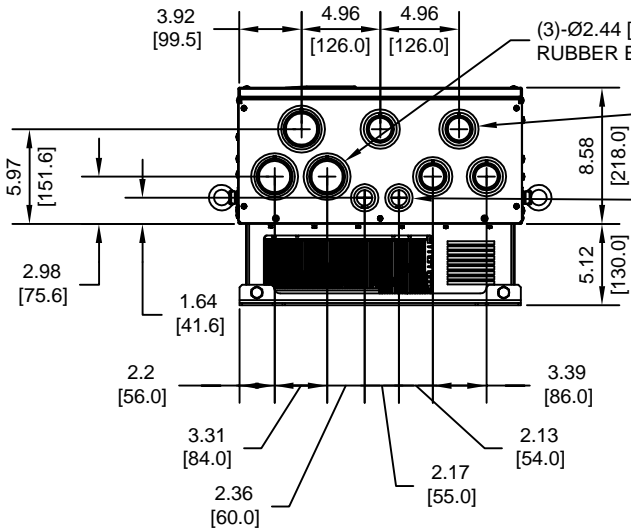
DIGITAL OPERATOR



(3)-Ø2.44 [62] HOLE WITH RUBBER BUSHING

(4)-Ø1.97 [50] HOLE WITH RUBBER BUSHING

(2)-Ø1.38 [35] HOLE WITH RUBBER BUSHING



MODEL #	VOLTAGE (VAC)	OUTPUT CURRENT (A)	WEIGHT LBS (Kg)	HEAT LOSS (W)		
				INT	EXT	TOTAL
2055	208/230	215	207 (94)	619	1588	2207
2075		312	209 (95)	844	1956	2800
4075	480	156	211 (96)	562	1285	1847
4090		180	213 (97)	673	1614	2287

INT=INTERNAL COMPONENTS
EXT=EXTERNAL HEATSINK

FOR ADDITIONAL DETAILS AND SPECIFICATIONS, CONSULT MANUAL

TOLERANCES/REFERENCES:

UNITS: IN[mm] SCALE: 1:12

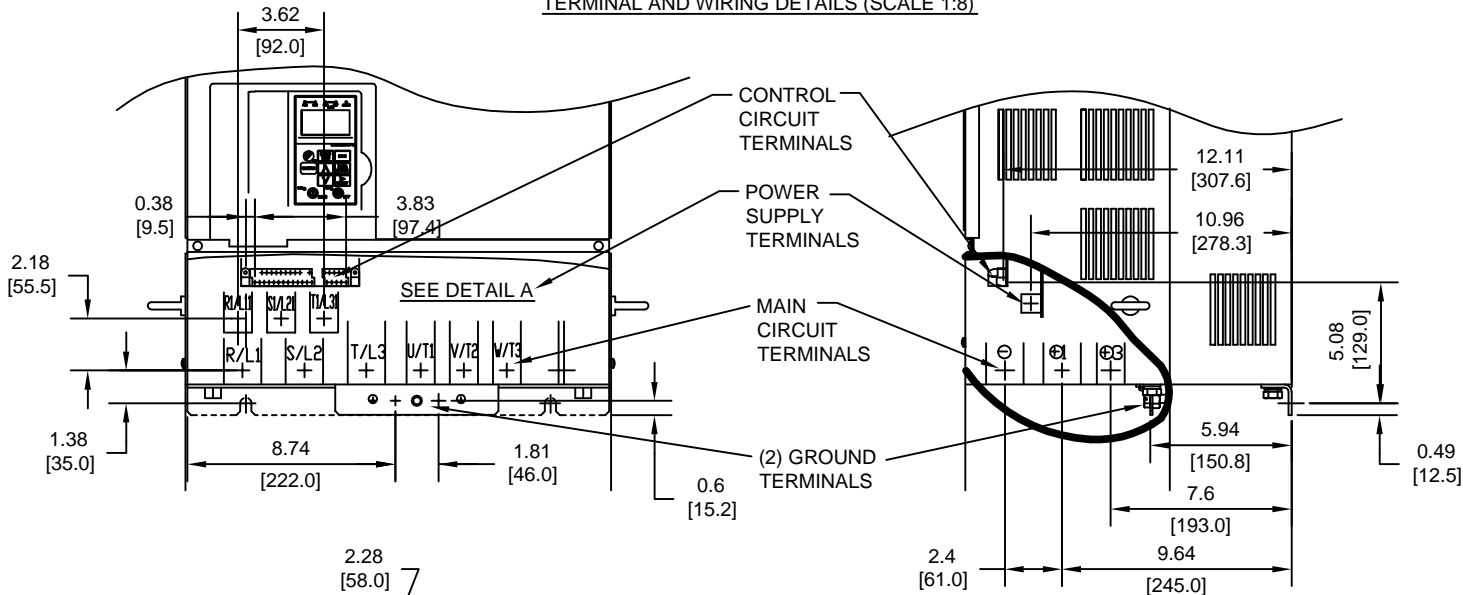
YASKAWA
A World of Automation Solutions™

YASKAWA ELECTRIC AMERICA, INC.
Corporate Headquarters
2121 Norman Drive South
Waukegan, IL 60085
1-800-YASKAWA
http://www.yaskawa.com

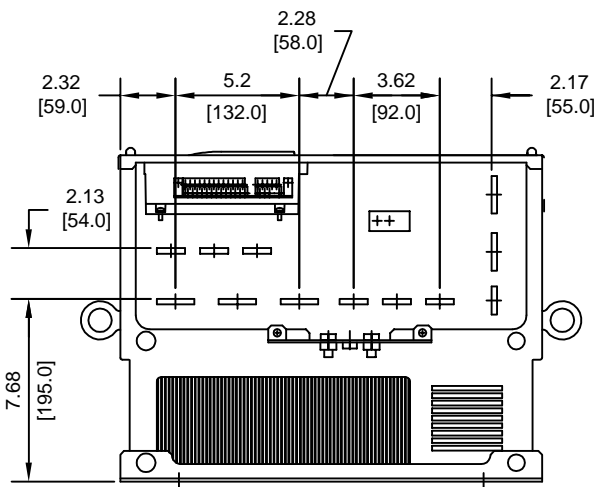
DRAWN: J. MATTAS	DATE: 3-30-05
CHECKED: M. RUCINSKI	DATE: 5-3-05
TECH: J. CAIRO	DATE: 3-31-05
APPROVED: T. SASADA	DATE: 6-8-05
ORIGINAL DESIGN: -	DATE: -

TITLE: E7 DIMENSION DRAWING		
FRAME SIZE 10		
NEMA TYPE 1/IP20 ENCLOSURE		
E7U2055 TO 2075, 4075 TO 4090		
SIZE: A	REVISION: R00	PAGE: 1 of 3
DRAWING #: DD.E7.FR10.N1.01		

TERMINAL AND WIRING DETAILS (SCALE 1:8)

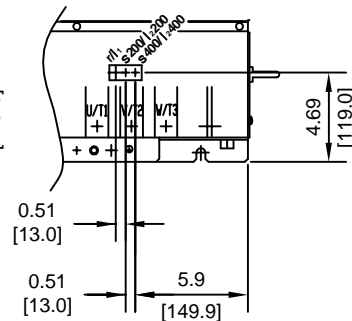
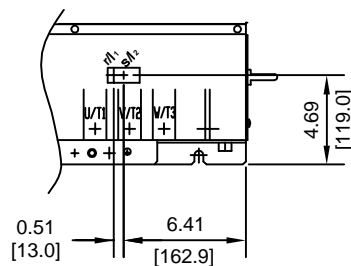


DETAIL A (SCALE 1:10)



MODELS E7U2055 AND E7U2075

MODELS E7U4075 AND E7U4090



TERMINAL AND WIRE SPECIFICATIONS FOR MAIN CIRCUIT AND GROUND

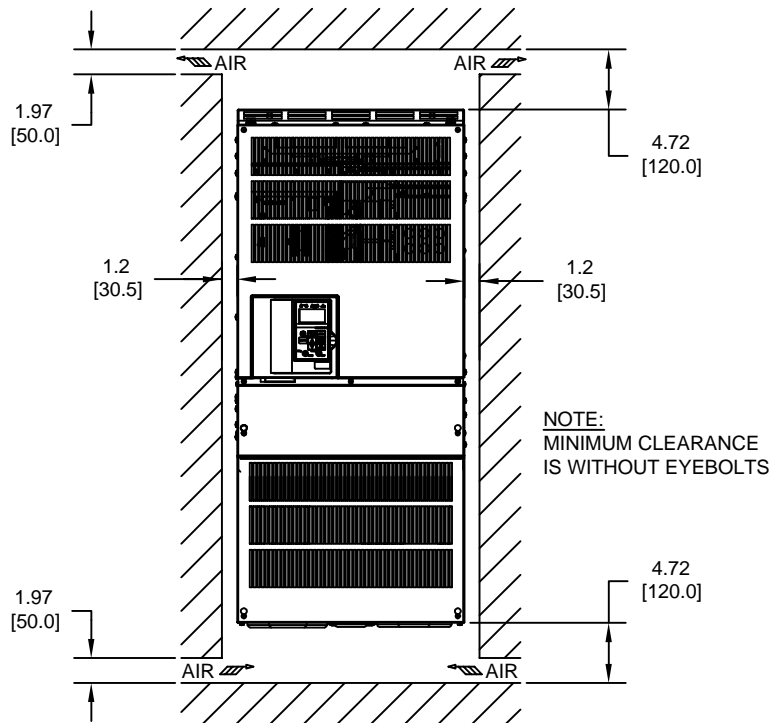
MODEL # CIMR-E7U	TERMINAL SYMBOL	TERMINAL SCREW	CLAMPING TORQUE lb.in.(N.m.)
2055	R/L1, S/L2, T/L3, ⊕, ⊕1, ⊕, U/T1, V/T2, W/T3, R1/L11, S1/L21, T1/L31	M10	155 TO 198 (17.6 TO 22.5)
	⊕3	M8	78.0 TO 95.0 (8.8 TO 10.8)
	r1 1, s12	M4	11.4 TO 12.3 (1.3 TO 1.4)
2075	R/L1, S/L2, T/L3, U/T1, V/T2, W/T3, R1/L11, S1/L21, T1/L31	M10	155 TO 198 (17.6 TO 22.5)
	⊕3	M8	78.0 TO 95.0 (8.8 TO 10.8)
	⊕, ⊕1, ⊕ r1 1, s12	M12 M4	277 TO 345 (31.4 TO 39.2) 11.4 TO 12.3 (1.3 TO 1.4)
4075	R/L1, S/L2, T/L3, ⊕, ⊕1, ⊕, U/T1, V/T2, W/T3, R1/L11, S1/L21, T1/L31	M10	155 TO 198 (17.6 TO 22.5)
	⊕3	M8	78.0 TO 95.0 (8.8 TO 10.8)
	r1 1, s200/2200, s400/2400	M4	11.4 TO 12.3 (1.3 TO 1.4)
4090	R/L1, S/L2, T/L3, ⊕, ⊕1, ⊕, U/T1, V/T2, W/T3, R1/L11, S1/L21, T1/L31	M10	155 TO 198 (17.6 TO 22.5)
	⊕3	M8	78.0 TO 95.0 (8.8 TO 10.8)
	r1 1, s200/2200, s400/2400	M4	11.4 TO 12.3 (1.3 TO 1.4)

NOTE: REFER TO APPLICABLE CODES FOR PROPER WIRE TYPE AND SIZE

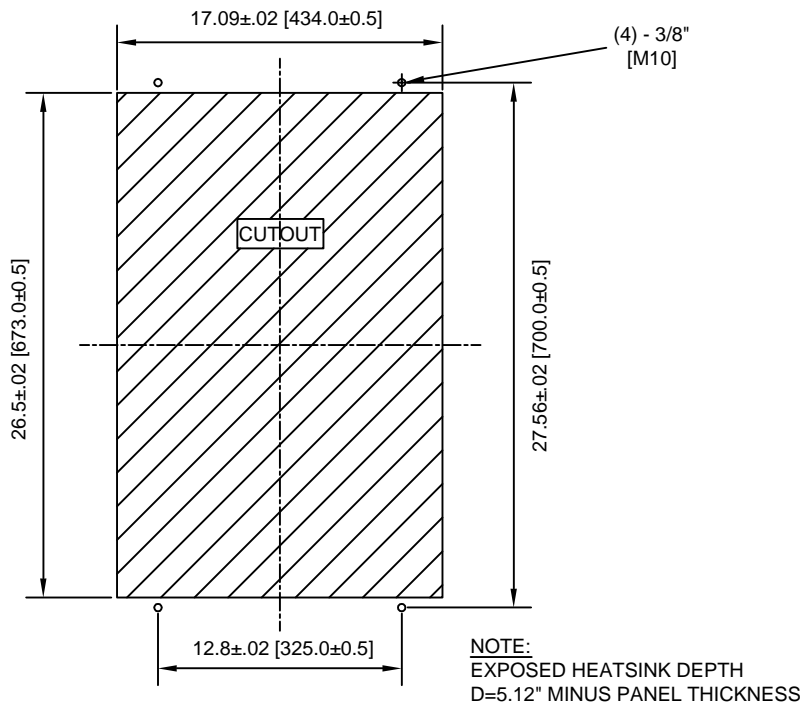
FOR ADDITIONAL DETAILS AND SPECIFICATIONS, CONSULT MANUAL

TOLERANCES/REFERENCES: - - - - -	<p>YASKAWA A World of Automation Solutions™</p> <p>YASKAWA ELECTRIC AMERICA, INC. Corporate Headquarters 2121 Norman Drive South Waukegan, IL 60085 1-800-YASKAWA http://www.yaskawa.com</p>	DRAWN: J. MATTAS	DATE 3-30-05	TITLE: E7 DIMENSION DRAWING		
		CHECKED: M. RUCINSKI	DATE 5-3-05	FRAME SIZE 10		
		TECH: J. CAIRO	DATE 3-31-05	NEMA TYPE 1/IP20 ENCLOSURE		
		APPROVED: T. SASADA	DATE 6-8-05	E7U2055 TO 2075, 4075 TO 4090		
UNITS: IN[mm]	SCALE: BY VIEW	ORIGINAL DESIGN: -	DATE -	SIZE A	REVISION R00	PAGE 2 of 3
				DRAWING #: DD.E7.FR10.N1.01		

MINIMUM INSTALLATION CLEARANCES (SCALE 1:15)



PANEL CUTOUT FOR EXTERNAL HEATSINK MOUNTING CONFIGURATION (SCALE 1:10)



FOR ADDITIONAL DETAILS AND SPECIFICATIONS, CONSULT MANUAL

TOLERANCES/REFERENCES: -		<p>YASKAWA A World of Automation Solutions™</p> <p>YASKAWA ELECTRIC AMERICA, INC. Corporate Headquarters 2121 Norman Drive South Waukegan, IL 60085 1-800-YASKAWA http://www.yaskawa.com</p>	DRAWN: J. MATTAS	DATE 3-30-05	TITLE: E7 DIMENSION DRAWING		
			CHECKED: M. RUCINSKI	DATE 5-3-05	FRAME SIZE 10		
		TECH: J. CAIRO	DATE 3-31-05	NEMA TYPE 1/IP20 ENCLOSURE			
		APPROVED: T. SASADA	DATE 6-6-05	SIZE A	REVISION R00	PAGE 3 of 3	
UNITS: IN[mm]	SCALE: BY VIEW	ORIGINAL DESIGN: -	DATE -	DRAWING #: DD.E7.FR10.N1.01			