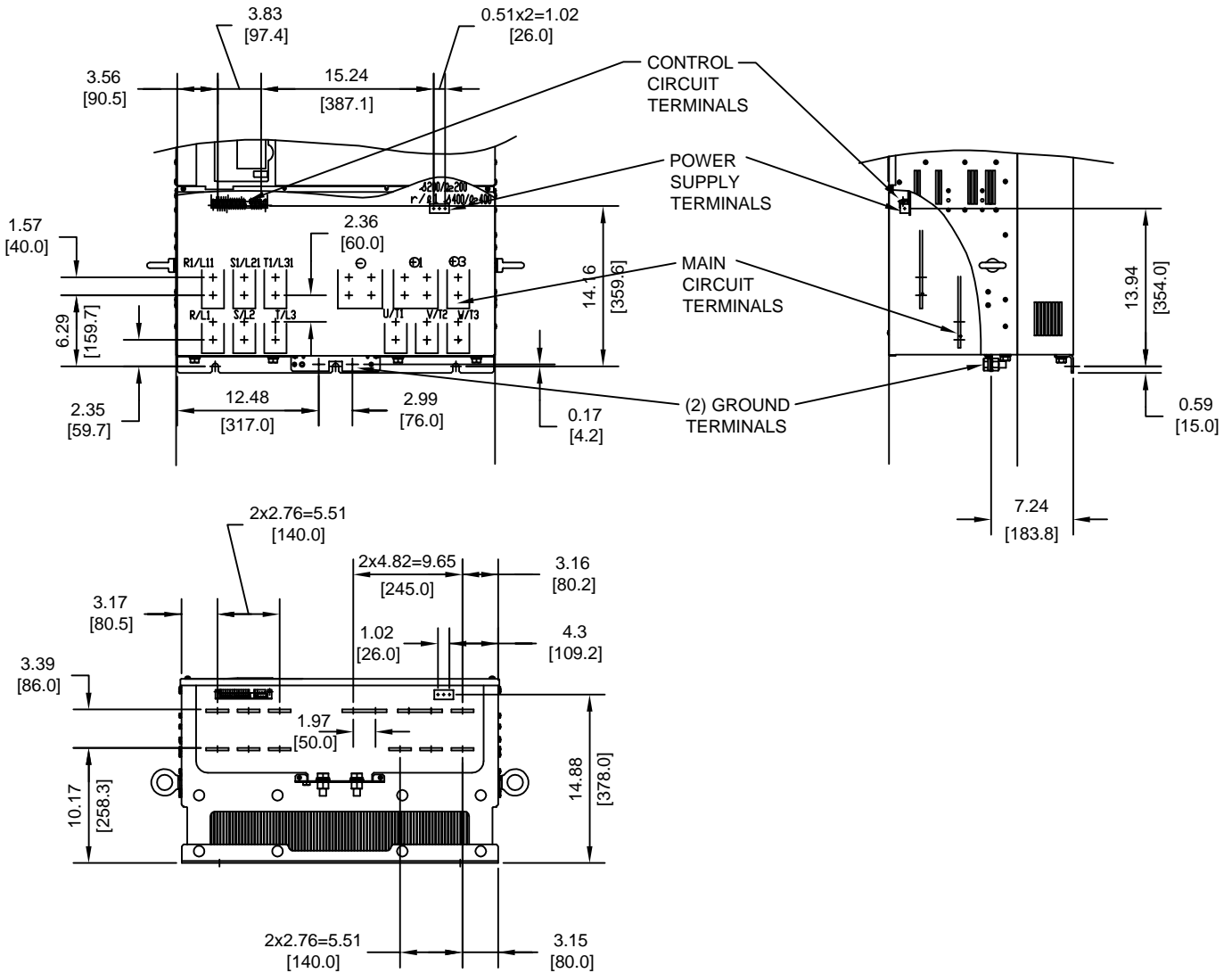


TERMINAL AND WIRING DETAILS (SCALE 1:15)



TERMINAL AND WIRE SPECIFICATIONS FOR
MAIN CIRCUIT AND GROUND

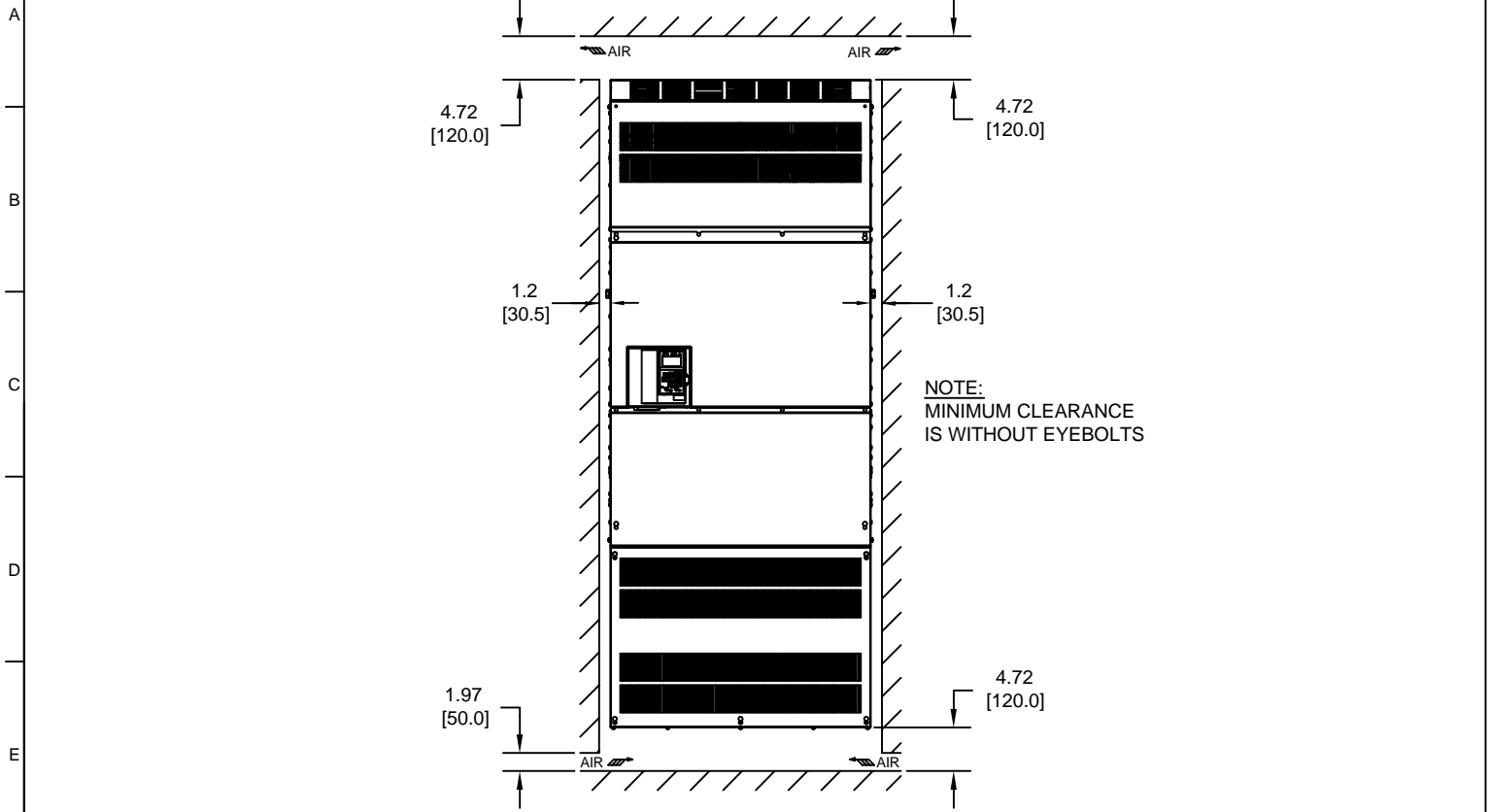
| MODEL # CIMR-E7U | TERMINAL SYMBOL | TERMINAL SCREW | CLAMPING TORQUE lb.in.(N.m.) |
|---------------------|--|-------------------|---------------------------------|
| 4185 | R/L1, S/L2, T/L3, ⊙, ⊕1, ⊕2, ⊕3, U/T1, V/T2, W/T3, R1/L11, S1/L21, T1/L31 | M16 | 694 TO 867 (78.4 TO 98.0) |
| | r/1, s200/2200, s400/2400 | M4 | 11.4 TO 12.3 (1.3 TO 1.4) |
| 4220 | R/L1, S/L2, T/L3, ⊙, ⊕1, ⊕2, ⊕3, U/T1, V/T2, W/T3, R1/L11, S1/L21, T1/L31 | M16 | 694 TO 867 (78.4 TO 98.0) |
| | r/1, s200/2200, s400/2400 | M4 | 11.4 TO 12.3 (1.3 TO 1.4) |

NOTE: REFER TO APPLICABLE CODES FOR PROPER WIRE TYPE AND SIZE

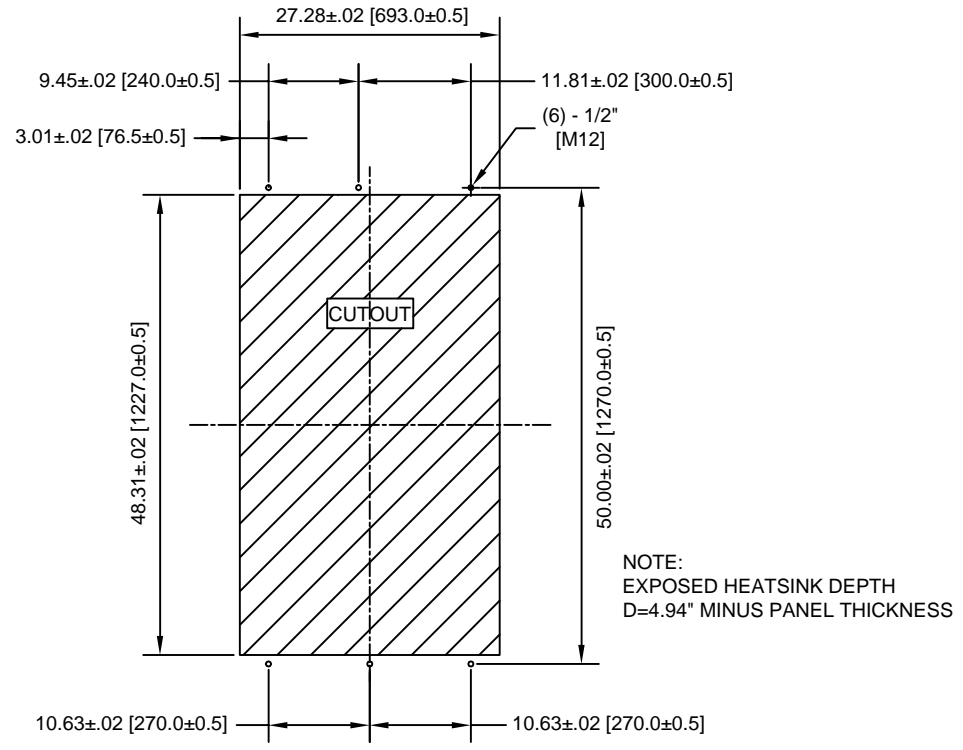
FOR ADDITIONAL DETAILS AND SPECIFICATIONS, CONSULT MANUAL

| | | | | | | |
|---|---|--|--|-----------|--------------------------------|----------------|
| TOLERANCES/REFERENCES: - - - - - | <p>YASKAWA A World of Automation Solutions™</p> <p>YASKAWA ELECTRIC AMERICA, INC. Corporate Headquarters 2121 Norman Drive South Waukegan, IL 60085 1-800-YASKAWA http://www.yaskawa.com</p> | DRAWN: J. MATTAS DATE 5-21-08 | TITLE: E7 DIMENSION DRAWING FRAME SIZE 14 NEMA TYPE 1/IP20 ENCLOSURE E7U4185, 4220 | | | |
| | | CHECKED: J. MATTAS DATE 7-25-08 | TECH: J. CAIRO DATE 8-1-08 | SIZE A | REVISION R00 | PAGE 2 of 3 |
| | | APPROVED: T. SASADA DATE 8-8-08 | ORIGINAL DESIGN: - | DATE - | DRAWING #: DD.E7.FR14.N1.01 | |
| | | UNITS: IN[mm] | SCALE: BY VIEW | | | |

MINIMUM INSTALLATION CLEARANCES (SCALE 1:20)



PANEL CUTOUT FOR EXTERNAL HEATSINK MOUNTING CONFIGURATION (SCALE 1:20)



FOR ADDITIONAL DETAILS AND SPECIFICATIONS, CONSULT MANUAL

| | | | | | | |
|--|--|------------------------|-----------------|---------------------------------------|-----------------|----------------|
| TOLERANCES/REFERENCES: - - - - - - | <p>YASKAWA A World of Automation Solutions™</p> <p>YASKAWA ELECTRIC AMERICA, INC. Corporate Headquarters 2121 Norman Drive South Waukegan, IL 60085 1-800-YASKAWA http://www.yaskawa.com</p> | DRAWN: J. MATTAS | DATE 5-21-08 | TITLE: E7 DIMENSION DRAWING | | |
| | | CHECKED: J. MATTAS | DATE 7-25-08 | FRAME SIZE 14 | | |
| | | TECH: J. CAIRO | DATE 8-1-08 | NEMA TYPE 1/IP20 ENCLOSURE | | |
| | | APPROVED: T. SASADA | DATE 8-8-08 | E7U4185, 4220 | | |
| UNITS: IN[mm] | SCALE: BY VIEW | ORIGINAL DESIGN: - | DATE - | SIZE A | REVISION R00 | PAGE 3 of 3 |
| | | | | DRAWING #: DD.E7.FR14.N1.01 | | |