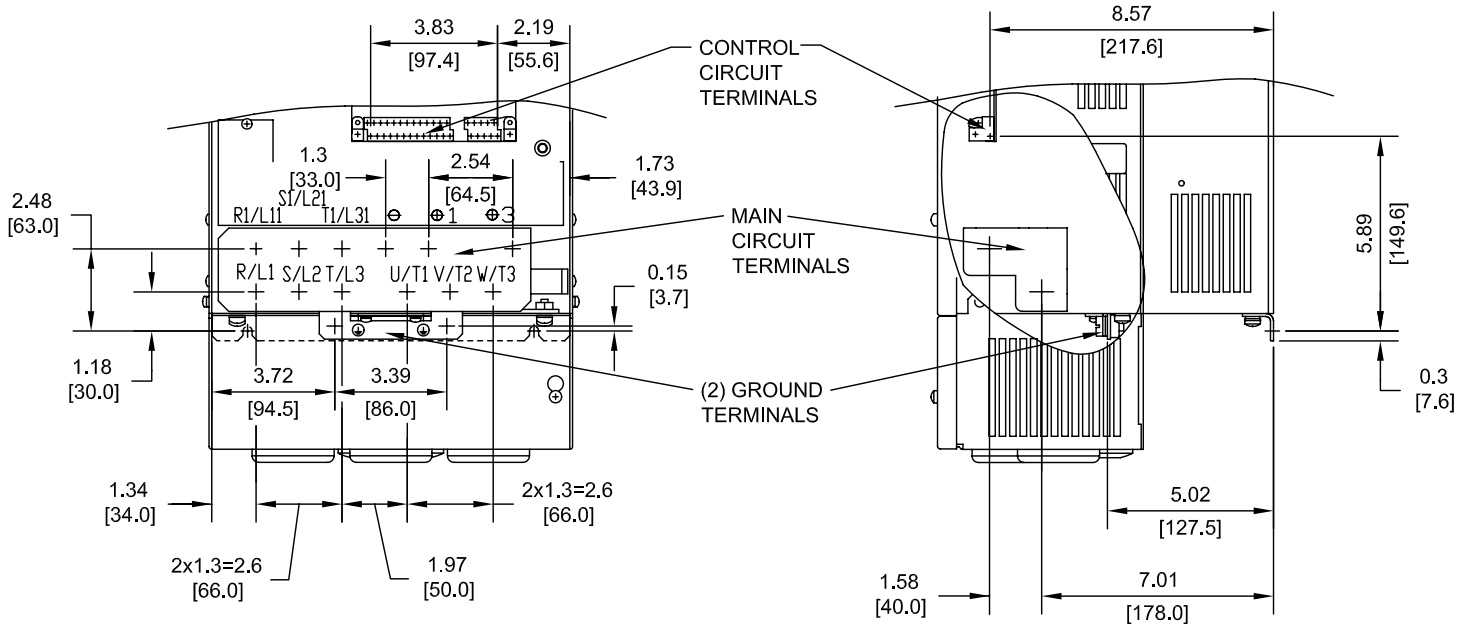


TERMINAL AND WIRING DETAILS (SCALE 1:6)



TERMINAL AND WIRE SPECIFICATIONS FOR
MAIN CIRCUIT AND GROUND

| MODEL # CIMR-E7U | TERMINAL SYMBOL | TERMINAL SCREW | CLAMPING TORQUE lb.in.(N.m.) | WIRE RANGE AWG(mm ²) |
|---------------------|---|-------------------|---------------------------------|-------------------------------------|
| 4022 | R/L1, S/L2, T/L3, ⊖, ⊕1, R1/L11, S1/L21, T1/L31, U/T1, V/T2, W/T3, | M6 | 35.2 TO 44.0 (4.0 TO 5.0) | 12-3 (3.5-30) |
| | ⊕3 | M6 | 35.2 TO 44.0 (4.0 TO 5.0) | 12-8 (3.5-8) |
| | ⊖ | M8 | 79.2 TO 88.0 (9.0 TO 10.0) | SEE NOTE |
| 4024, 4030 | R/L1, S/L2, T/L3, ⊖, ⊕1, R1/L11, S1/L21, T1/L31, U/T1, V/T2, W/T3, | M6 | 35.2 TO 44.0 (4.0 TO 5.0) | 12-3 (3.5-30) |
| | ⊕3 | M6 | 35.2 TO 44.0 (4.0 TO 5.0) | 12-8 (3.5-8) |
| | ⊖ | M8 | 79.2 TO 88.0 (9.0 TO 10.0) | SEE NOTE |

NOTE: REFER TO APPLICABLE CODES FOR PROPER WIRE TYPE AND SIZE

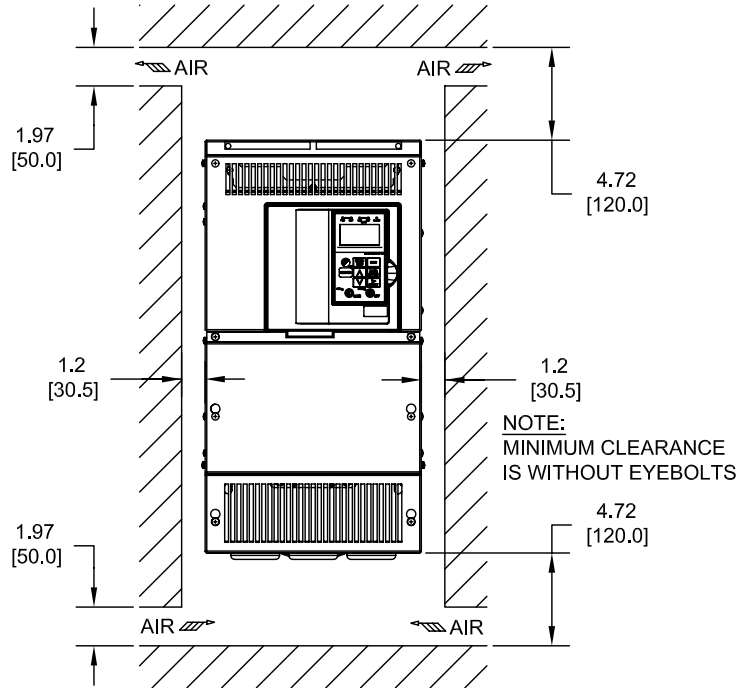
FOR ADDITIONAL DETAILS AND SPECIFICATIONS, CONSULT MANUAL

CONFIDENTIAL

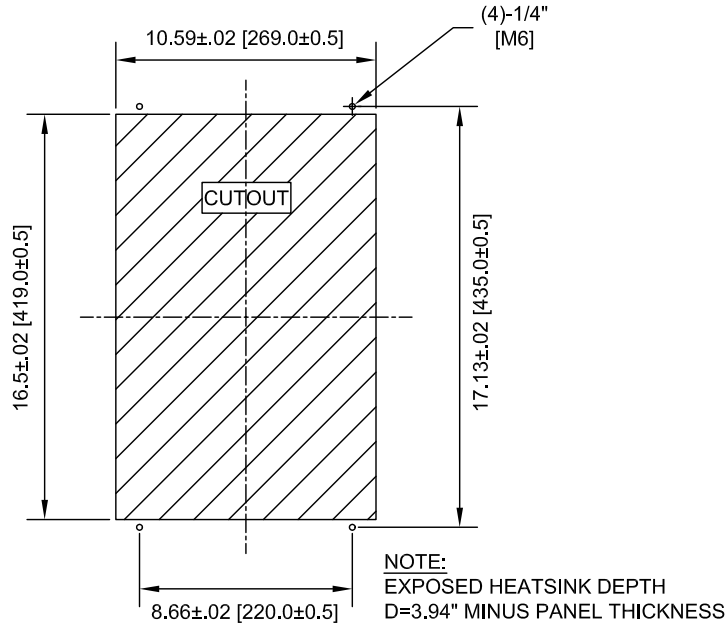
THIS DOCUMENT AND THE INFORMATION CONTAINED IN IT ARE CONFIDENTIAL, AND CANNOT BE COPIED OR DISCLOSED IN WHOLE OR IN PART WITHOUT THE EXPRESSED WRITTEN CONSENT OF YASKAWA ELECTRIC AMERICA INC.

| | | | | |
|---|-------------------|--|---|--|
| TOLERANCES/REFERENCES: - - - - - - - | | <p>YASKAWA A World of Automation Solutions™</p> <p>YASKAWA ELECTRIC AMERICA, INC. Corporate Headquarters 2121 Norman Drive South Waukegan, IL 60085 1-800-YASKAWA http://www.yaskawa.com</p> | DRAWN: J. MATTAS DATE 4-12-05 | TITLE: E7 DIMENSION DRAWING FRAME SIZE 6B NEMA TYPE 1/IP20 ENCLOSURE E7U4022 TO 4030 |
| UNITS: IN[mm] | SCALE: BY VIEW | | CHECKED: M. RUCINSKI DATE 6-5-05 | DATE 4-13-05 |
| | | TECH: J. CAIRO DATE 6-6-05 | DATE 6-6-05 | SIZE A |
| | | APPROVED: T. SASADA | DATE 6-6-05 | REVISION R01 |
| | | ORIGINAL DESIGN: - | DATE - | PAGE 2 of 3 |
| | | DRAWING #: DD.E7.FR6B.N1.01 | | |

MINIMUM INSTALLATION CLEARANCES (SCALE 1:10)



PANEL CUTOUT FOR EXTERNAL HEATSINK MOUNTING CONFIGURATION (SCALE 1:8)



FOR ADDITIONAL DETAILS AND SPECIFICATIONS, CONSULT MANUAL

CONFIDENTIAL

THIS DOCUMENT AND THE INFORMATION CONTAINED IN IT ARE CONFIDENTIAL AND CANNOT BE COPIED OR DISCLOSED IN WHOLE OR IN PART WITHOUT THE EXPRESSED WRITTEN CONSENT OF YASKAWA ELECTRIC AMERICA INC.

| | | | | | | |
|--|-------------------|---|--------------------------------|------------------|--|---------------------------------------|
| TOLERANCES/REFERENCES: - - - - - - | | YASKAWA <i>A World of Automation Solutions™</i> YASKAWA ELECTRIC AMERICA, INC. Corporate Headquarters 2121 Norman Drive South Waukegan, IL 60085 1-800-YASKAWA http://www.yaskawa.com | DRAWN: J. MATTAS | DATE: 4-12-05 | TITLE: E7 DIMENSION DRAWING FRAME SIZE 6B NEMA TYPE 1/IP20 ENCLOSURE E7U4022 TO 4030 | |
| UNITS: IN[mm] | SCALE: BY VIEW | | CHECKED: M. RUCINSKI | DATE: 6-5-05 | | |
| | | | TECH: J. CAIRO | DATE: 4-13-05 | | |
| | | | APPROVED: T. SASADA | DATE: 6-6-05 | SIZE: A | |
| | | | ORIGINAL DESIGN: - | DATE: - | REVISION: R01 | |
| | | | | | PAGE: 3 of 3 | |
| | | | | | | DRAWING #: DD.E7.FR6B.N1.01 |