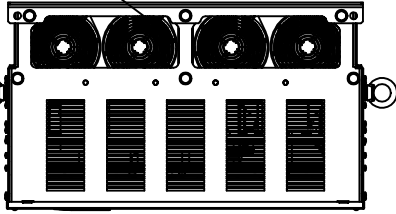
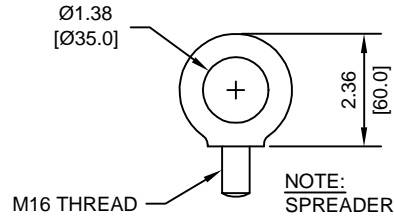


(4) EXTERNAL COOLING FANS

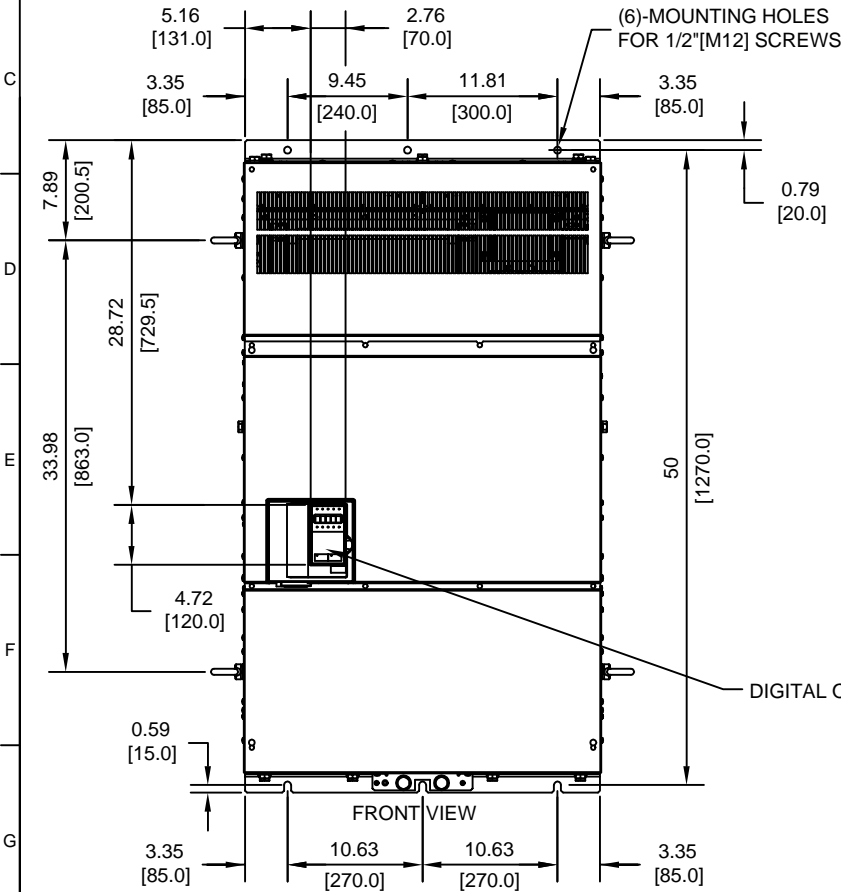


LIFTING AND EYEBOLT DETAILS



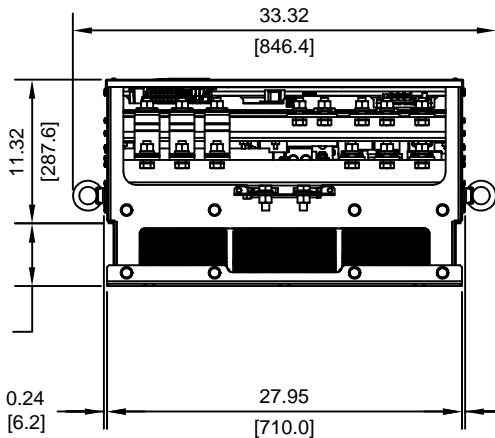
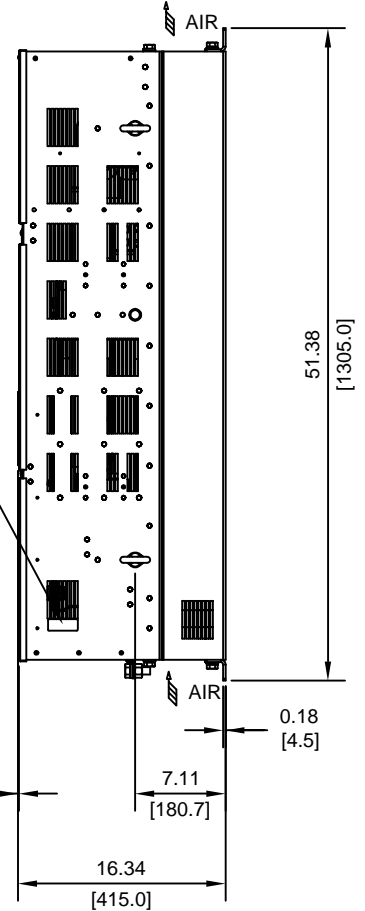
NOTE:
SPREADER BAR REQUIRED TO
AVOID DAMAGE DURING LIFTING

M16 THREAD



NAMEPLATE

DIGITAL OPERATOR



MODEL #	VOLTAGE (VAC)	OUTPUT CURRENT (A)		WEIGHT LBS (Kg)	HEAT LOSS (W)		
		ND2	HD		INT	EXT	TOTAL
4185	480	414	370	572 (260)	1328	2636	3964
4220		515	506	616 (280)	1712	3797	5509

ND2=NORMAL DUTY 2
HD=HEAVY DUTY

INT=INTERNAL COMPONENTS
EXT=EXTERNAL HEATSINK

FOR ADDITIONAL DETAILS AND SPECIFICATIONS, CONSULT MANUAL

TOLERANCES/REFERENCES:

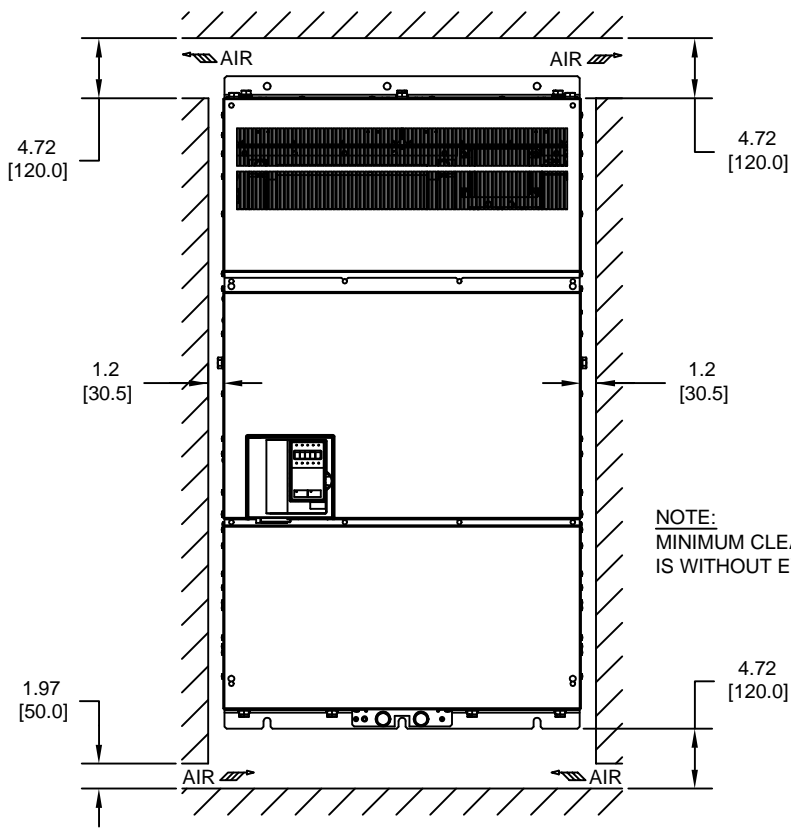
UNITS: IN[mm] SCALE: 1:15

YASKAWA
A World of Automation Solutions™

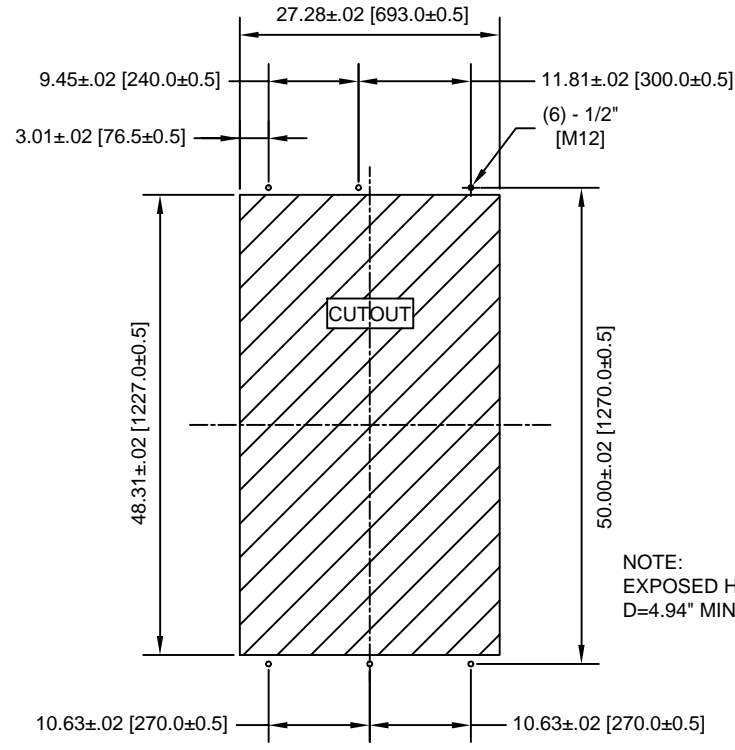
YASKAWA ELECTRIC AMERICA, INC.
Corporate Headquarters
2121 Norman Drive South
Waukegan, IL 60085
1-800-YASKAWA
http://www.yaskawa.com

DRAWN: J. MATTAS	DATE 8-20-03	TITLE: F7 DIMENSION DRAWING		
CHECKED: M. RUCINSKI	DATE 9-16-03	FRAME SIZE 14		
TECH: J. CAIRO	DATE 9-2-03	IP00 ENCLOSURE		
APPROVED: T. SASADA	DATE 9-16-03	SIZE A	REVISION A	PAGE 1 of 3
ORIGINAL DESIGN: -	DATE -	DRAWING #: DD.F7.FR14.IP00.01		

MINIMUM INSTALLATION CLEARANCES (SCALE 1:15)



PANEL CUTOUT FOR EXTERNAL HEATSINK MOUNTING CONFIGURATION (SCALE 1:20)



NOTE:
EXPOSED HEATSINK DEPTH
D=4.94" MINUS PANEL THICKNESS

FOR ADDITIONAL DETAILS AND SPECIFICATIONS, CONSULT MANUAL

TOLERANCES/REFERENCES: -		<p>YASKAWA A World of Automation Solutions™</p> <p>YASKAWA ELECTRIC AMERICA, INC. Corporate Headquarters 2121 Norman Drive South Waukegan, IL 60085 1-800-YASKAWA http://www.yaskawa.com</p>	DRAWN: J. MATTAS DATE: 8-20-03	TITLE: F7 DIMENSION DRAWING FRAME SIZE 14 IP00 ENCLOSURE F7U4185, 4220
UNITS: IN[mm]	SCALE: BY VIEW		CHECKED: M. RUCINSKI DATE: 9-16-03	REVISION A PAGE 3 of 3
		TECH: J. CAIRO DATE: 9-2-03	DATE: 9-16-03	DRAWING #: DD.F7.FR14.IP00.01
		APPROVED: T. SASADA	DATE: -	
		ORIGINAL DESIGN: -		