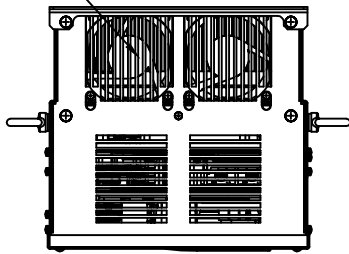


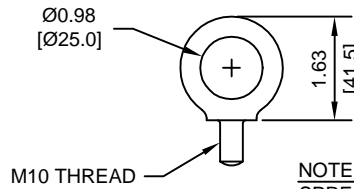
1 2 3 4 5 6 7 8

A
B
C
D
E
F
G
H
I
J

(2) EXTERNAL COOLING FANS



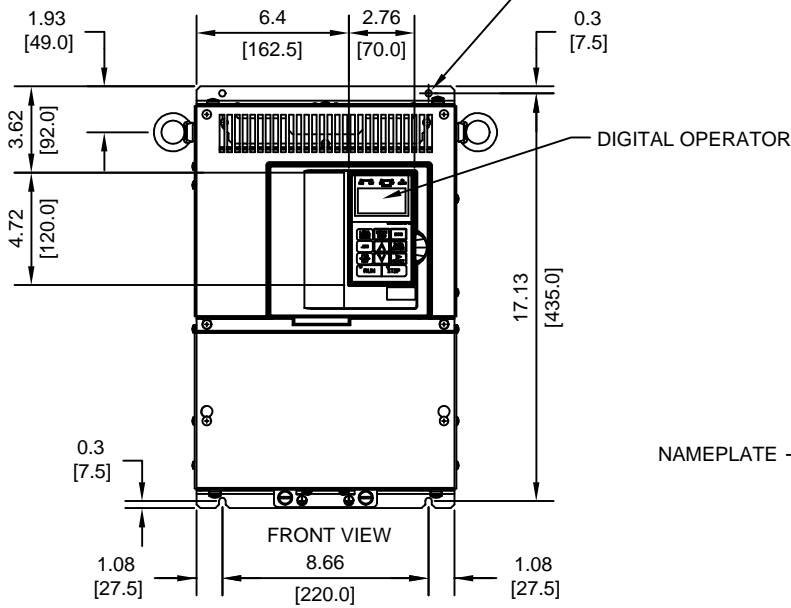
LIFTING AND EYEBOLT DETAILS



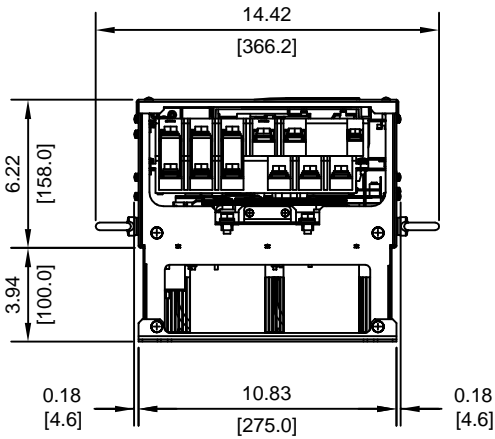
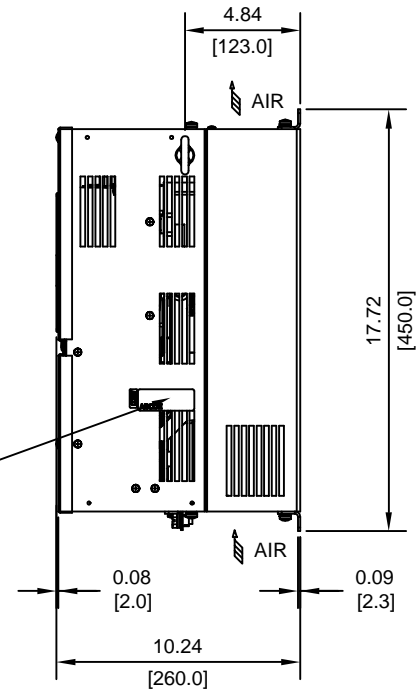
M10 THREAD

NOTE:
SPREADER BAR REQUIRED TO
AVOID DAMAGE DURING LIFTING

(4)-MOUNTING HOLES
FOR 1/4"[M6] SCREWS



NAMEPLATE



MODEL #	VOLTAGE (VAC)	OUTPUT CURRENT (A)		WEIGHT LBS (Kg)	HEAT LOSS (W)		
		ND2	HD		INT	EXT	TOTAL
2030	208/240	115	115	53 (24)	334	883	1217
4022	480	50.4	45	46 (21)	233	420	653
4030		67.2	60	46 (21)	298	691	989

ND2=NORMAL DUTY 2
HD=HEAVY DUTY

INT=INTERNAL COMPONENTS
EXT=EXTERNAL HEATSINK

FOR ADDITIONAL DETAILS AND SPECIFICATIONS, CONSULT MANUAL

TOLERANCES/REFERENCES:	
-	-
-	-
-	-
-	-
UNITS:	SCALE:
IN[mm]	1:8

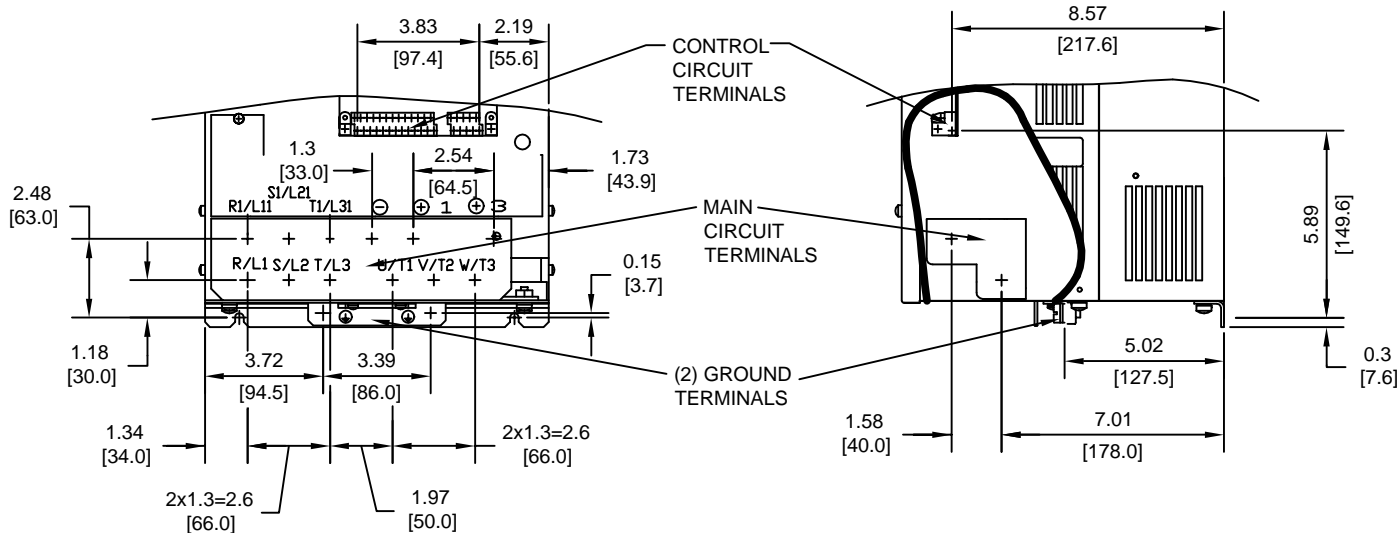
YASKAWA
A World of Automation Solutions™

YASKAWA ELECTRIC AMERICA, INC.
Corporate Headquarters
2121 Norman Drive South
Waukegan, IL 60085
1-800-YASKAWA
http://www.yaskawa.com

DRAWN:	J. MATTAS	DATE:	5-15-03
CHECKED:	M. RUCINSKI	DATE:	6-16-03
TECH:	J. CAIRO	DATE:	5-22-03
APPROVED:	T. SASADA	DATE:	6-16-03
ORIGINAL DESIGN:	-	DATE:	-

TITLE:			
F7 DIMENSION DRAWING			
FRAME SIZE 6			
IP00 ENCLOSURE			
F7U2030, 4022, 4030			
SIZE	REVISION	PAGE	
A	A	1 of 3	
DRAWING #:			
DD.F7.FR6.IP00.01			

TERMINAL AND WIRING DETAILS (SCALE 1:6)



TERMINAL AND WIRE SPECIFICATIONS FOR MAIN CIRCUIT AND GROUND

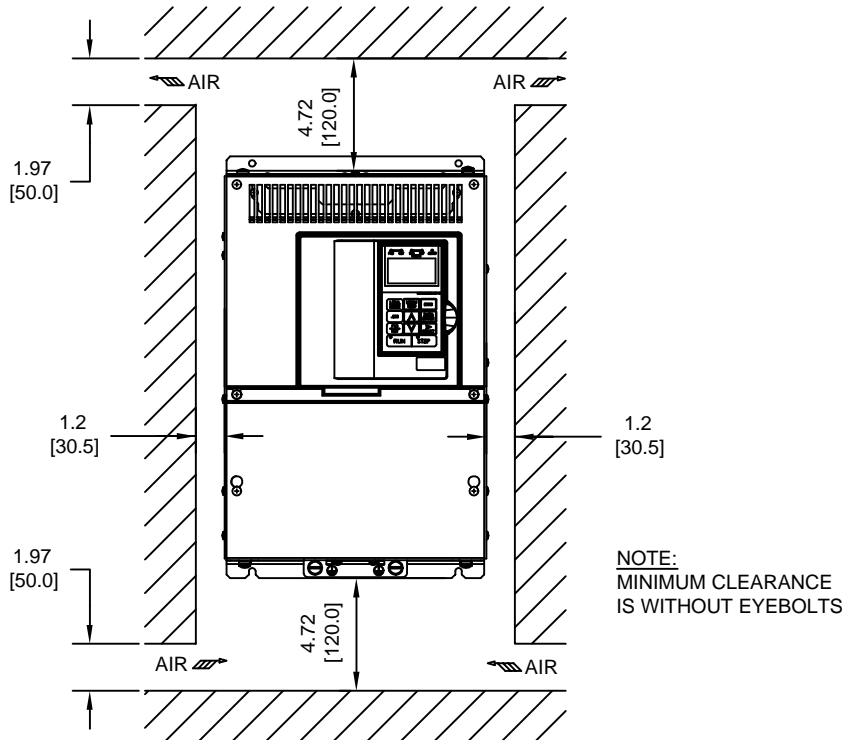
MODEL # CIMR-F7U	TERMINAL SYMBOL	TERMINAL SCREW	CLAMPING TORQUE lb.in.(N.m.)	WIRE RANGE AWG(mm ²)
2030	R/L1, S/L2, T/L3, ⊖, ⊕1, R1/L11, S1/L21, T1/L31, U/T1, V/T2, W/T3,	M8	79.2 TO 88.0 (9.0 TO 10.0)	8-1/0 (8-60)
	⊕3	M6	35.2 TO 44.0 (4.0 TO 5.0)	8-4 (8-22)
	⊖	M8	79.2 TO 88.0 (9.0 TO 10.0)	SEE NOTE
4022	R/L1, S/L2, T/L3, ⊖, ⊕1, R1/L11, S1/L21, T1/L31, U/T1, V/T2, W/T3,	M6	35.2 TO 44.0 (4.0 TO 5.0)	12-3 (3.5-30)
	⊕3	M6	35.2 TO 44.0 (4.0 TO 5.0)	12-8 (3.5-8)
	⊖	M8	79.2 TO 88.0 (9.0 TO 10.0)	SEE NOTE
4030	R/L1, S/L2, T/L3, ⊖, ⊕1, R1/L11, S1/L21, T1/L31, U/T1, V/T2, W/T3,	M6	35.2 TO 44.0 (4.0 TO 5.0)	12-3 (3.5-30)
	⊕3	M6	35.2 TO 44.0 (4.0 TO 5.0)	12-8 (3.5-8)
	⊖	M8	79.2 TO 88.0 (9.0 TO 10.0)	SEE NOTE

NOTE: REFER TO APPLICABLE CODES FOR PROPER WIRE TYPE AND SIZE

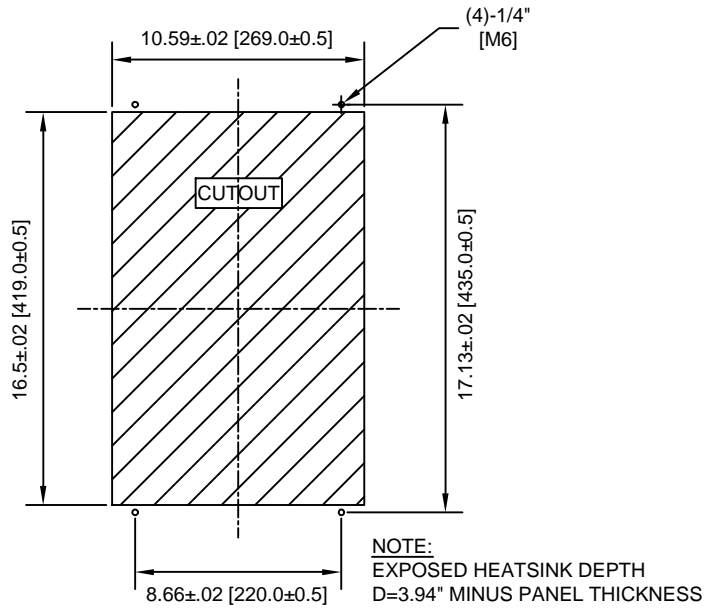
FOR ADDITIONAL DETAILS AND SPECIFICATIONS, CONSULT MANUAL

TOLERANCES/REFERENCES: - - - - -	<p>YASKAWA A World of Automation Solutions™</p> <p>YASKAWA ELECTRIC AMERICA, INC. Corporate Headquarters 2121 Norman Drive South Waukegan, IL 60085 1-800-YASKAWA http://www.yaskawa.com</p>	DRAWN: J. MATTAS	DATE 5-15-03	TITLE: F7 DIMENSION DRAWING		
		CHECKED: M. RUCINSKI	DATE 6-16-03	FRAME SIZE 6		
		TECH: J. CAIRO	DATE 5-22-03	IP00 ENCLOSURE		
		APPROVED: T. SASADA	DATE 6-16-03	F7U2030, 4022, 4030		
UNITS: IN[mm]	SCALE: BY VIEW	ORIGINAL DESIGN: -	DATE -	SIZE A	REVISION A	PAGE 2 of 3
				DRAWING #: DD.F7.FR6.IP00.01		

MINIMUM INSTALLATION CLEARANCES (SCALE 1:8)



PANEL CUTOUT FOR EXTERNAL HEATSINK MOUNTING CONFIGURATION (SCALE 1:8)



FOR ADDITIONAL DETAILS AND SPECIFICATIONS, CONSULT MANUAL

TOLERANCES/REFERENCES: - - - - - -		<p>YASKAWA A World of Automation Solutions™</p> <p>YASKAWA ELECTRIC AMERICA, INC. Corporate Headquarters 2121 Norman Drive South Waukegan, IL 60085 1-800-YASKAWA http://www.yaskawa.com</p>	DRAWN: J. MATTAS DATE 5-15-03	TITLE: F7 DIMENSION DRAWING FRAME SIZE 6 IP00 ENCLOSURE F7U2030, 4022, 4030
UNITS: IN[mm]	SCALE: BY VIEW		CHECKED: M. RUCINSKI DATE 6-16-03	REVISION A PAGE 3 of 3
		TECH: J. CAIRO DATE 5-22-03	DATE 6-16-03	DRAWING #: DD.F7.FR6.IP00.01
		APPROVED: T. SASADA	DATE -	
		ORIGINAL DESIGN: -		