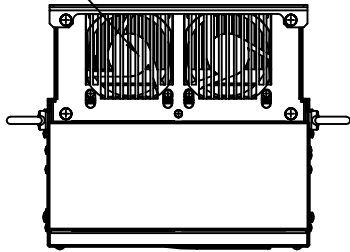
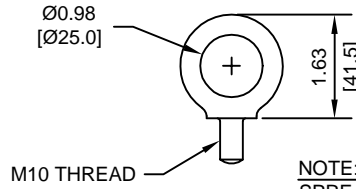


(2) EXTERNAL COOLING FANS



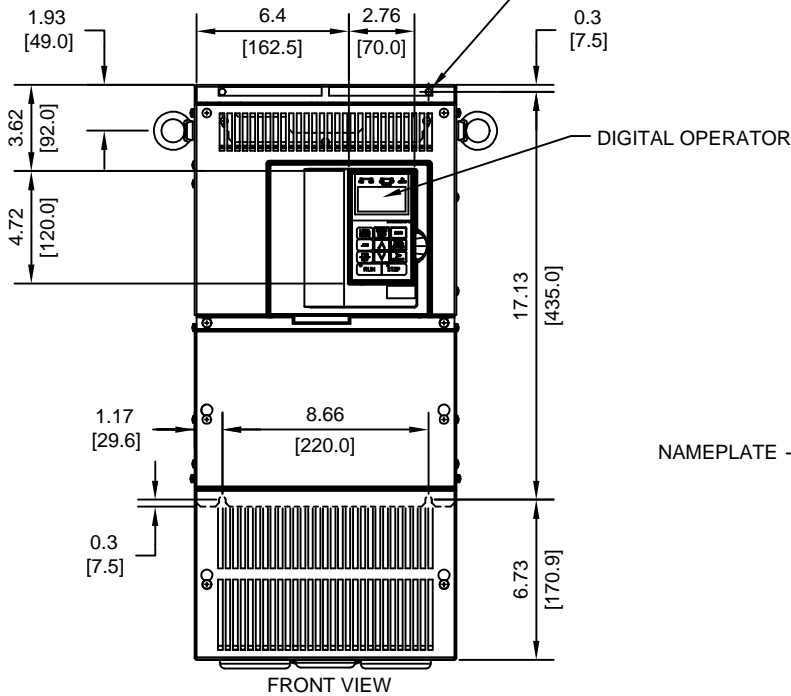
LIFTING AND EYEBOLT DETAILS



M10 THREAD

NOTE:
SPREADER BAR REQUIRED TO
AVOID DAMAGE DURING LIFTING

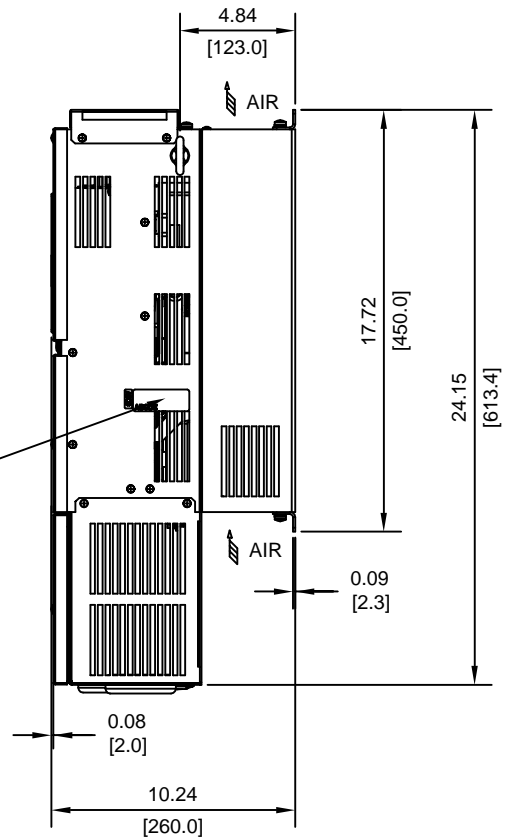
(4)-MOUNTING HOLES
FOR 1/4"[M6] SCREWS



DIGITAL OPERATOR

FRONT VIEW

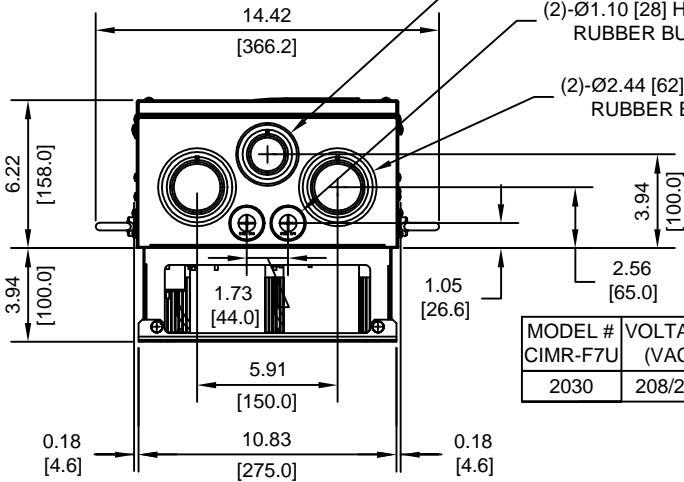
NAMEPLATE



Ø1.97 [50] HOLE WITH RUBBER BUSHING

(2)-Ø1.10 [28] HOLE WITH RUBBER BUSHING

(2)-Ø2.44 [62] HOLE WITH RUBBER BUSHING



MODEL #	VOLTAGE (VAC)	OUTPUT CURRENT (A)		WEIGHT LBS (Kg)	HEAT LOSS (W)		
		ND2	HD		INT	EXT	TOTAL
2030	208/240	115	115	59 (27)	334	883	1217

ND2=NORMAL DUTY 2
HD=HEAVY DUTY

INT=INTERNAL COMPONENTS
EXT=EXTERNAL HEATSINK

FOR ADDITIONAL DETAILS AND SPECIFICATIONS, CONSULT MANUAL

TOLERANCES/REFERENCES:



YASKAWA ELECTRIC AMERICA, INC.
Corporate Headquarters
2121 Norman Drive South
Waukegan, IL 60085
1-800-YASKAWA
http://www.yaskawa.com

DRAWN: J. MATTAS

DATE: 5-15-03

TITLE:
F7 DIMENSION DRAWING
FRAME SIZE 6A
NEMA TYPE 1/IP20 ENCLOSURE
F7U2030

CHECKED: M. RUCINSKI

DATE: 5-28-03

TECH: J. CAIRO

DATE: 5-22-03

APPROVED: T. SASADA

DATE: 5-28-03

ORIGINAL DESIGN:

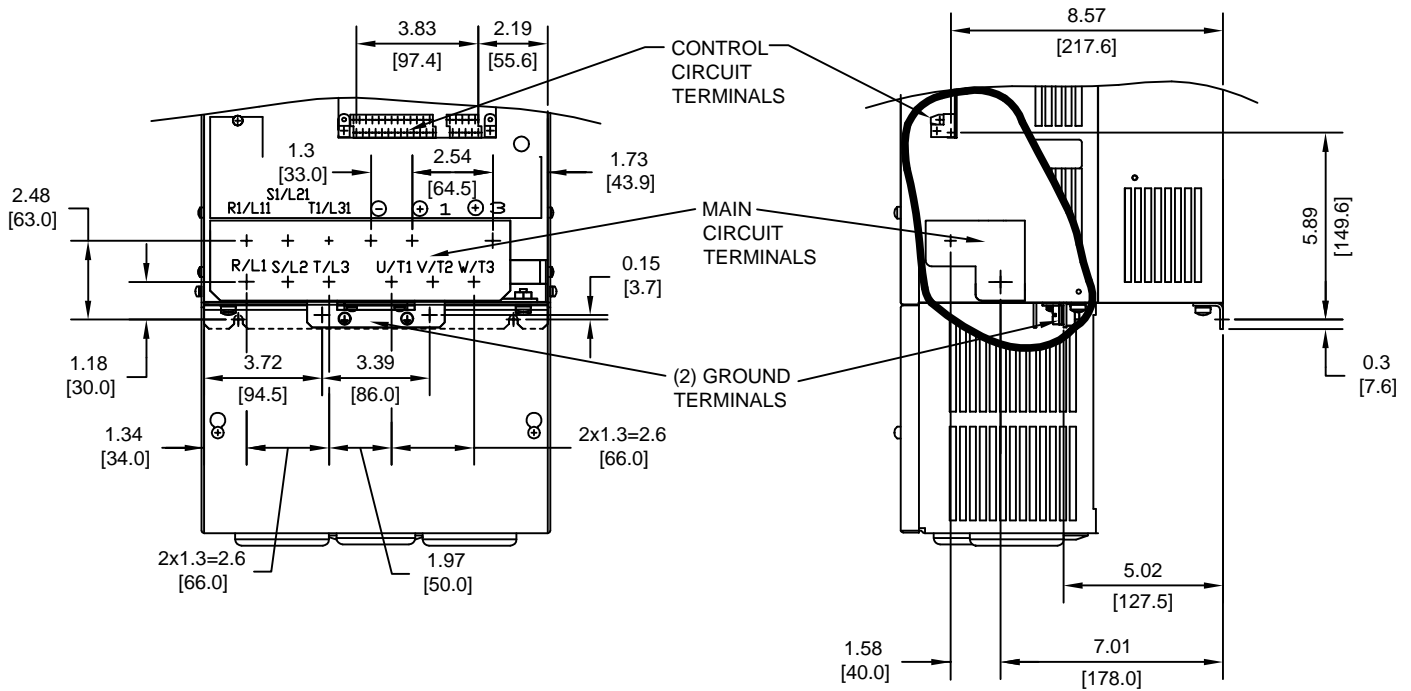
DATE:

SIZE	REVISION	PAGE
A	A	1 of 3

DRAWING #: DD.F7.FR6A.N1.01

UNITS: IN[mm]
SCALE: 1:8

TERMINAL AND WIRING DETAILS (SCALE 1:6)



TERMINAL AND WIRE SPECIFICATIONS FOR
MAIN CIRCUIT AND GROUND

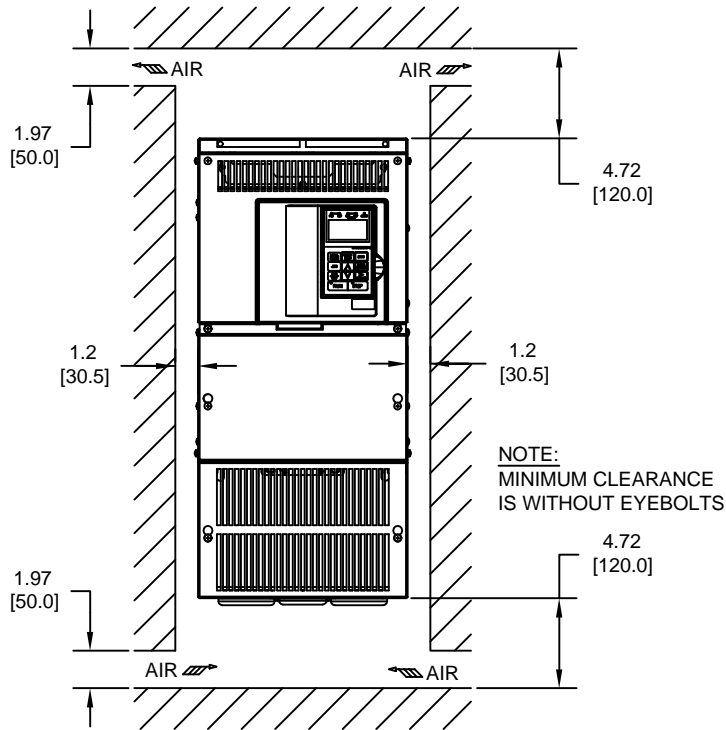
MODEL #	TERMINAL SYMBOL	TERMINAL SCREW	CLAMPING TORQUE lb.in.(N.m.)	WIRE RANGE AWG(mm ²)
2030	R/L1, S/L2, T/L3, ⊖, ⊕1, R1/L11, S1/L21, T1/L31, U/T1, V/T2, W/T3	M8	79.2 TO 88.0 (9.0 TO 10.0)	8-1/0 (8-60)
	⊕3	M6	35.2 TO 44.0 (4.0 TO 5.0)	8-4 (8-22)
	⊖	M8	79.2 TO 88.0 (9.0 TO 10.0)	SEE NOTE

NOTE: REFER TO APPLICABLE CODES FOR PROPER WIRE TYPE AND SIZE

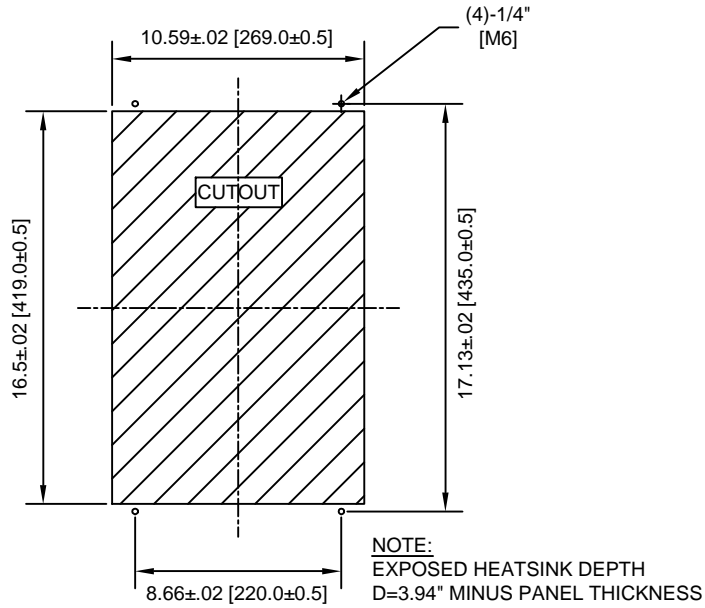
FOR ADDITIONAL DETAILS AND SPECIFICATIONS, CONSULT MANUAL

TOLERANCES/REFERENCES: - - - - -	<p>YASKAWA A World of Automation Solutions™</p> <p>YASKAWA ELECTRIC AMERICA, INC. Corporate Headquarters 2121 Norman Drive South Waukegan, IL 60085 1-800-YASKAWA http://www.yaskawa.com</p>	DRAWN: J. MATTAS DATE: 5-15-03	TITLE: F7 DIMENSION DRAWING FRAME SIZE 6A NEMA TYPE 1/IP20 ENCLOSURE F7U2030		
		CHECKED: M. RUCINSKI DATE: 5-28-03	REVISION A PAGE 2 of 3		
		TECH: J. CAIRO DATE: 5-22-03	DRAWING #: DD.F7.FR6A.N1.01		
		APPROVED: T. SASADA DATE: 5-28-03	ORIGINAL DESIGN: - DATE: -		
UNITS: IN[mm]	SCALE: BY VIEW				

MINIMUM INSTALLATION CLEARANCES (SCALE 1:10)



PANEL CUTOUT FOR EXTERNAL HEATSINK MOUNTING CONFIGURATION (SCALE 1:8)



FOR ADDITIONAL DETAILS AND SPECIFICATIONS, CONSULT MANUAL

TOLERANCES/REFERENCES: - - - - - -	<p>YASKAWA A World of Automation Solutions™</p> <p>YASKAWA ELECTRIC AMERICA, INC. Corporate Headquarters 2121 Norman Drive South Waukegan, IL 60085 1-800-YASKAWA http://www.yaskawa.com</p>	DRAWN: J. MATTAS	DATE 5-15-03	TITLE: F7 DIMENSION DRAWING		
		CHECKED: M. RUCINSKI	DATE 5-28-03	FRAME SIZE 6A		
		TECH: J. CAIRO	DATE 5-22-03	NEMA TYPE 1/IP20 ENCLOSURE		
		APPROVED: T. SASADA	DATE 5-28-03	F7U2030		
UNITS: IN[mm]	SCALE: BY VIEW	ORIGINAL DESIGN: -	DATE -	SIZE A	REVISION A	PAGE 3 of 3
			DRAWING #: DD.F7.FR6A.N1.01			