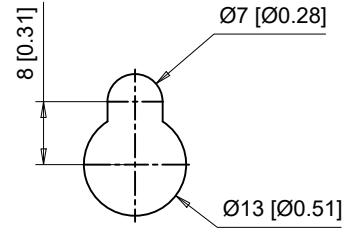
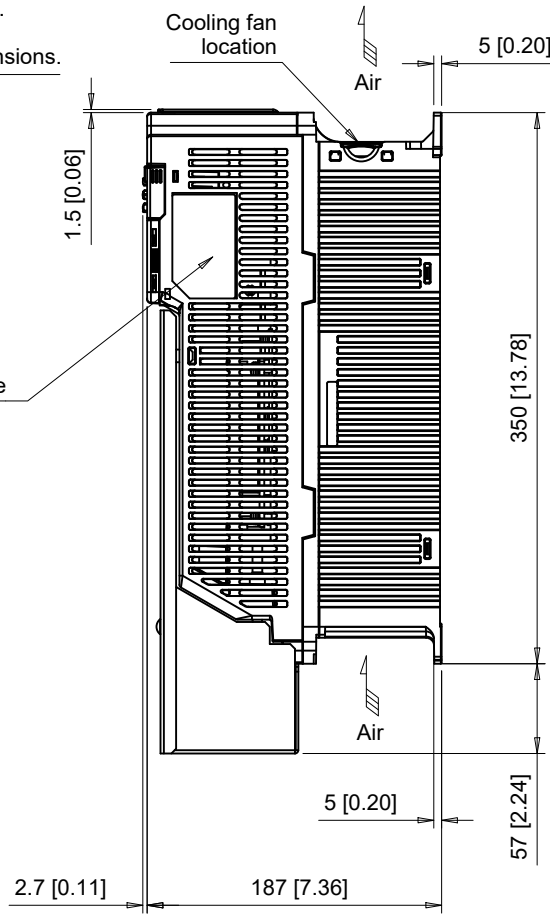
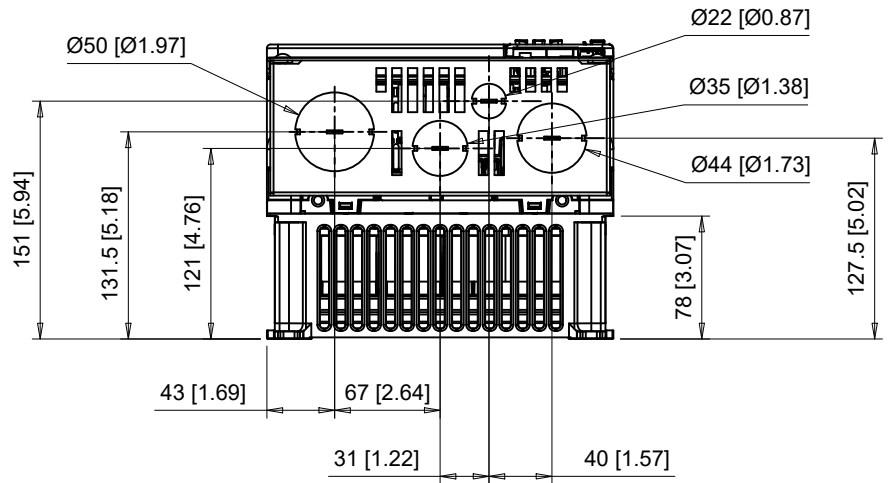


(4) Mounting Holes for M6 [1/4"] Screws. See Detail A for top mounting hole dimensions.



Detail A
 Top mounting hole dimensions
 Scale 1:1



The dimensions shown are for an IP20 drive that has been converted to a UL Type 1 drive by adding the parts from UL Type 1 kit part number ZBAA-GA50V7-1

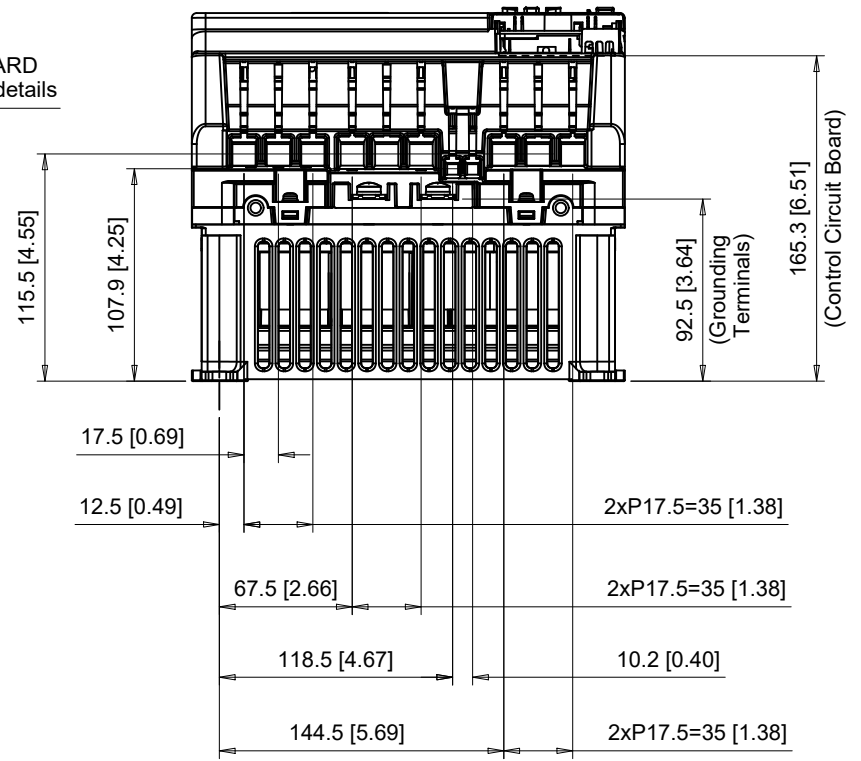
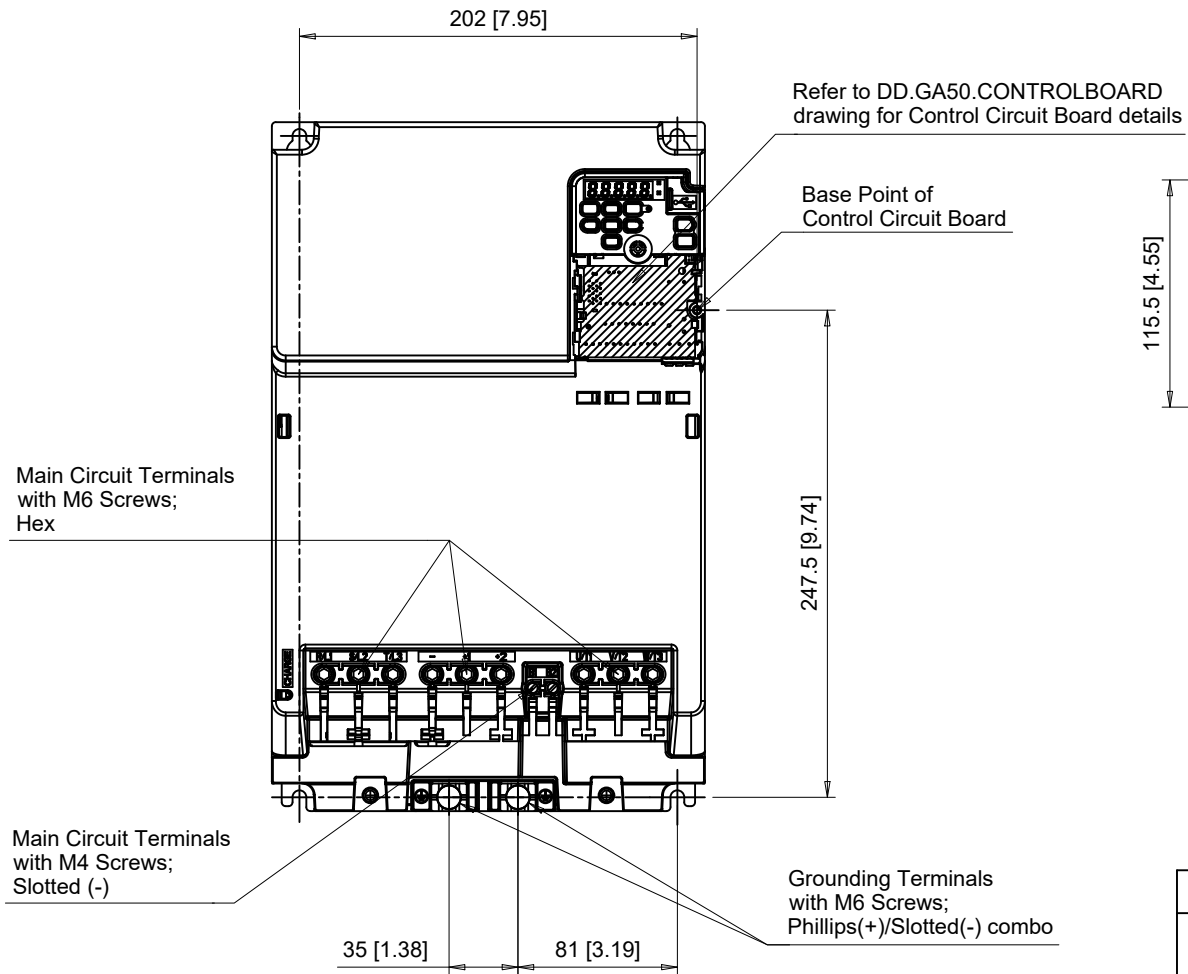
C/C: GA50□	INPUT VOLTAGE (VAC)	WEIGHT Kg (lb)	COOLING FANS
2070□□□	200 TO 240	8.9 (19.6)	2
2082□□□	3-PHASE	9.4 (20.7)	2

□ denotes A-Z

YASKAWA		DRWN. J. MATTAS	10-23-19	TITLE GA500 DIMENSION DRAWING FRAME SIZE 7 UL TYPE 1 ENCLOSURE	SIZE A	PAGE 1 OF 3	REV 0
	UNITS MM [IN]	CHKD. J. PIOTROWSKI	11-4-19		DWG.NO.		
	SCALE 1:5	TECH. L. UDDIN	11-18-19		DD.GA50.FR7.T1		
	APRV. J. CAIRO	11-19-19					

FRONT VIEW

BOTTOM VIEW



C/C: GA50□	TERMINAL SYMBOL	WIRE RANGE AWG (mm ²)	TERMINAL SCREW	CLAMPING TORQUE N.m. (lb.in.)
2070□□□	R/L1, S/L2, T/L3	14 - 2/0 (2.5 - 70)	M6	5.5 (49)
	U/T1, V/T2, W/T3	14 - 2/0 (2.5 - 70)	M6	5.5 (49)
2082□□□	-, +1, +2	14 - 2/0 (2.5 - 70)	M6	5.5 (49)
	B1, B2	14 - 6 (2.5 - 16)	M4	1.7 (15)
	⊕	6 - 4 (16 - 25)	M6	5.4 - 6.0 (47.8 - 53.1)

□ Denotes A-Z

Note: Refer to applicable codes and standards for proper wire type and size.

YASKAWA

UNITS MM [IN]
SCALE 1:4

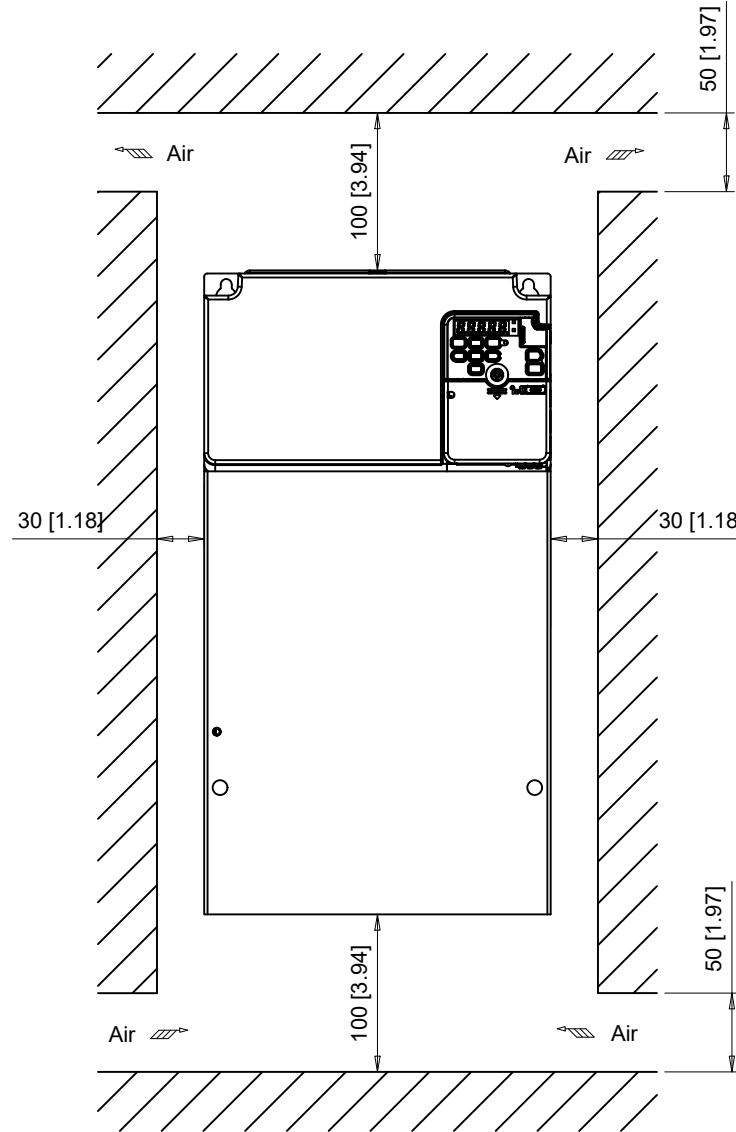
DRWN. J. MATTAS 10-23-19
CHKD. J. PIOTROWSKI 11-4-19
TECH. L. UDDIN 11-18-19
APRV. J. CAIRO 11-19-19

TITLE
GA500 DIMENSION DRAWING
FRAME SIZE 7
UL TYPE 1 ENCLOSURE

SIZE A PAGE 2 OF 3
DWG.NO. DD.GA50.FR7.T1

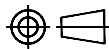
REV 0

Minimum Installation Clearances



Note:
For alternate mounting configurations, consult manual.

YASKAWA



UNITS MM [IN]
SCALE 1:5

DRWN.	J. MATTAS	10-23-19
CHKD.	J. PIOTROWSKI	11-4-19
TECH.	L. UDDIN	11-18-19
APRV.	J. CAIRO	11-19-19

TITLE
GA500 DIMENSION DRAWING
FRAME SIZE 7
UL TYPE 1 ENCLOSURE

SIZE A	PAGE 3 OF 3
DWG.NO.	
DD.GA50.FR7.T1	

REV
0