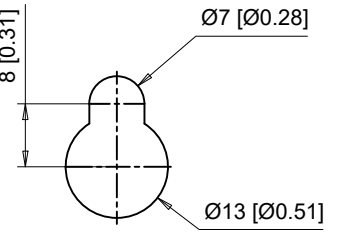


(4) Mounting Holes for M6 [1/4"] Screws. See Detail A for top mounting hole dimensions.



**Detail A**  
Top mounting hole dimensions  
Scale 1:1

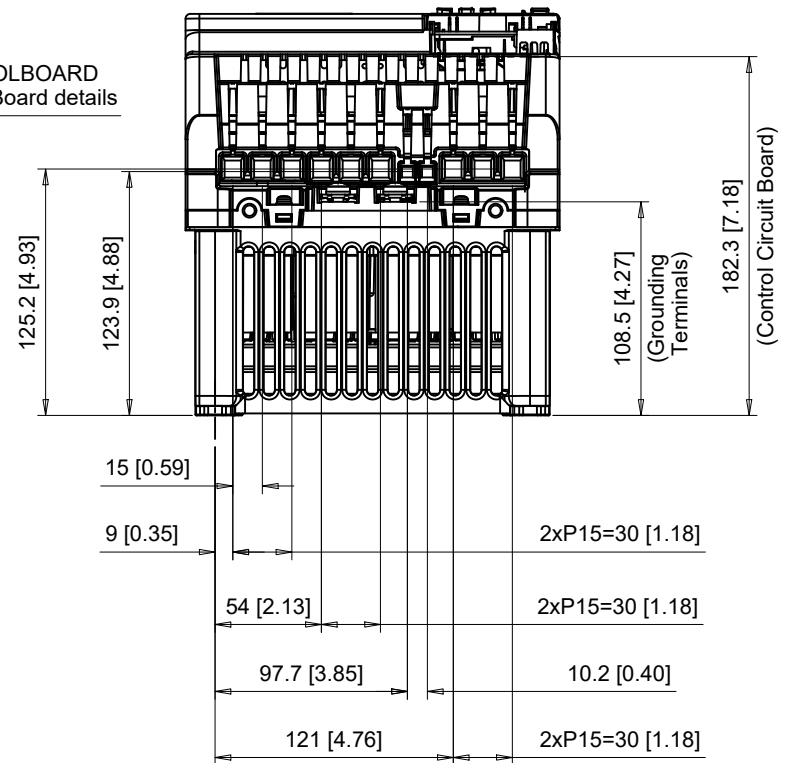
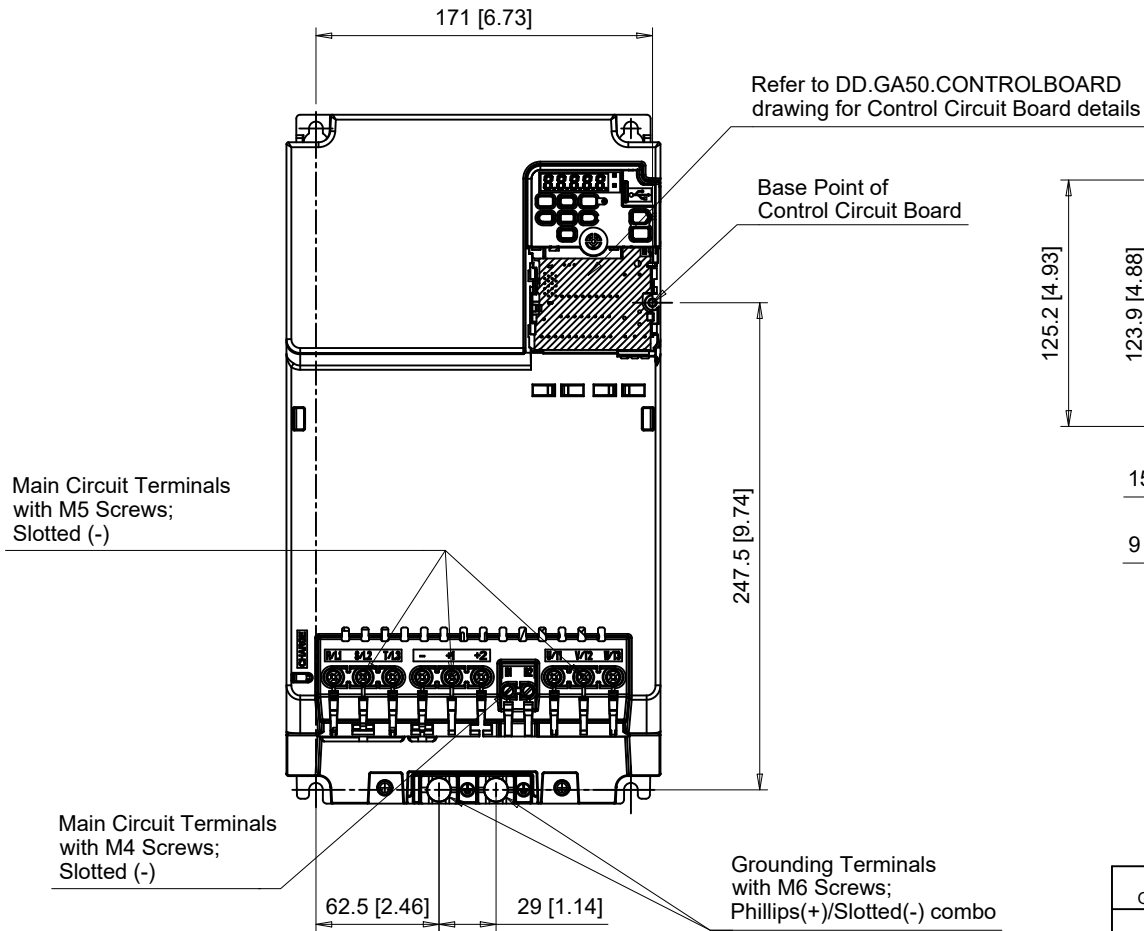
The dimensions shown are for an IP20 drive that has been converted to a UL Type 1 drive by adding the parts from UL Type 1 kit part number ZBAA-GA50V8-1

C/C:	INPUT VOLTAGE (VAC)	WEIGHT Kg (lb)	COOLING FANS
GA50□	380 TO 480	7.6 (16.9)	2
4044□□□	3-PHASE	7.6 (16.9)	2
4060□□□			

□ denotes A-Z

**FRONT VIEW**

**BOTTOM VIEW**



C/C: GA50□	TERMINAL SYMBOL	WIRE RANGE AWG (mm <sup>2</sup> )	TERMINAL SCREW	CLAMPING TORQUE N.m. (lb.in.)
4044□□□	R/L1, S/L2, T/L3	8 - 2 (10 - 35)	M5	4.5 (40)
	U/T1, V/T2, W/T3	8 - 2 (10 - 35)	M5	4.5 (40)
4060□□□	-, +1, +2	8 - 2 (10 - 35)	M5	4.5 (40)
	B1, B2	14 - 6 (2.5 - 16)	M4	1.7 (15)
	⊕	10 - 6 (6 - 16)	M6	5.4 - 6.0 (48 - 53)

□ Denotes A-Z

Note: Refer to applicable codes and standards for proper wire type and size.

**YASKAWA**



UNITS MM [IN]

SCALE 1:4

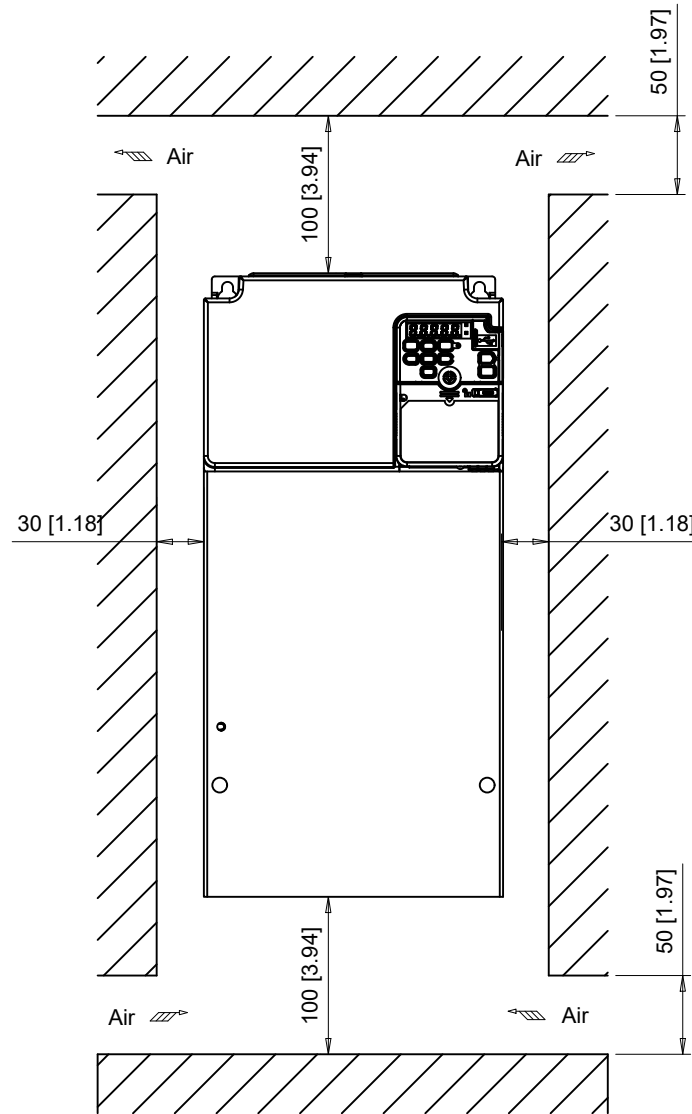
DRWN.	J. MATTAS	10-24-19
CHKD.	J. PIOTROWSKI	11-4-19
TECH.	L. UDDIN	11-18-19
APRV.	J. CAIRO	11-19-19

TITLE  
GA500 DIMENSION DRAWING  
FRAME SIZE 8  
UL TYPE 1 ENCLOSURE

SIZE A PAGE 2 OF 3  
DWG.NO. DD.GA50.FR8.T1

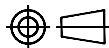
REV 0

Minimum Installation Clearances



Note:  
For alternate mounting configurations, consult manual.

**YASKAWA**



UNITS MM [IN]  
SCALE 1:5

DRWN.	J. MATTAS	10-24-19
CHKD.	J. PIOTROWSKI	11-4-19
TECH.	L. UDDIN	11-18-19
APRV.	J. CAIRO	11-19-19

TITLE  
GA500 DIMENSION DRAWING  
FRAME SIZE 8  
UL TYPE 1 ENCLOSURE

SIZE A	PAGE 3 OF 3
DWG.NO.	
DD.GA50.FR8.T1	

REV  
0