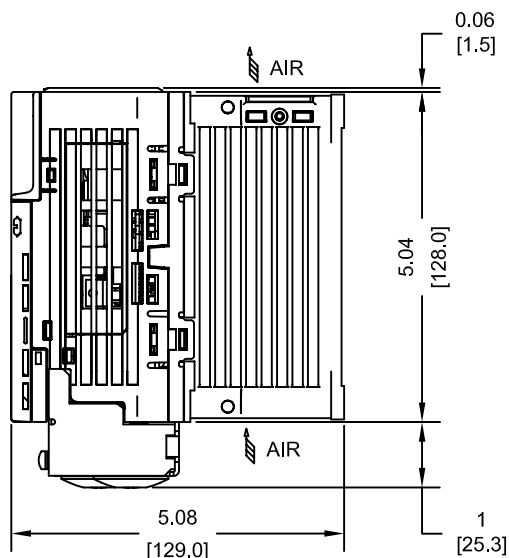
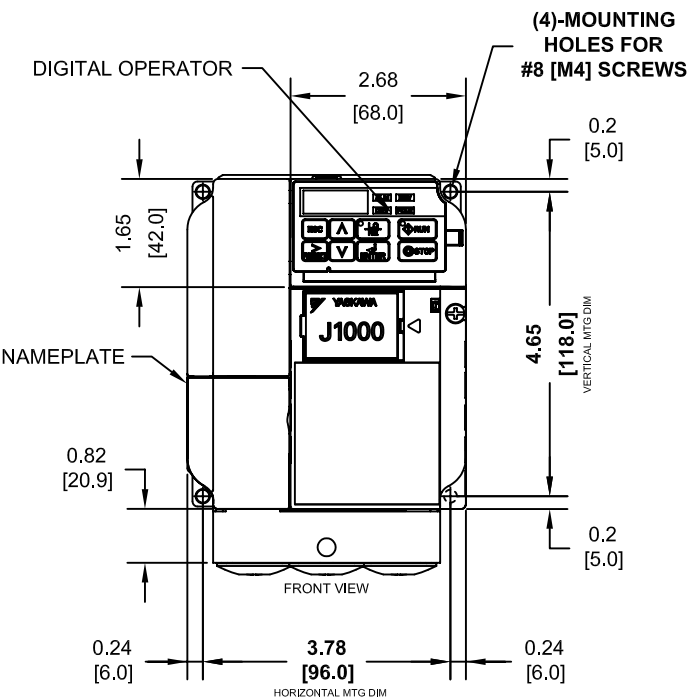


COOLING  
FAN

TOP PROTECTIVE COVER

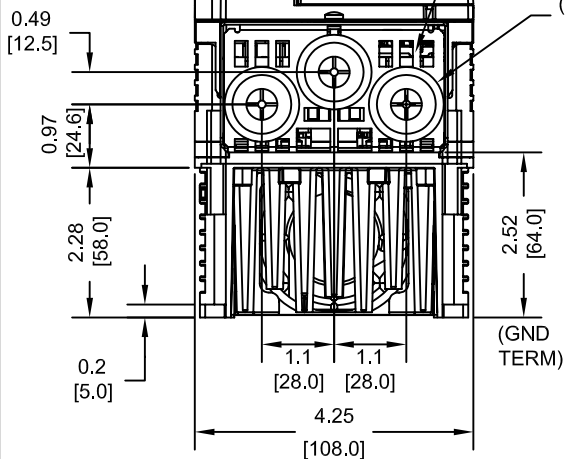
**NOTE:**

PROTECTIVE COVERS ARE FACTORY INSTALLED TO THE TOP AND BOTTOM OF THE DRIVE TO MEET IP20 & NEMA TYPE 1 REQUIREMENTS, RESULTING IN AN AMBIENT TEMPERATURE RATING OF 104F(40C). REMOVE THESE COVERS WHEN OPERATING THE DRIVE WITHIN A PANEL TO OBTAIN THE MAXIMUM SURROUNDING AIR TEMPERATURE RATING OF 122F(50C). REMOVING THESE COVERS RESULTS IN AN ENCLOSURE RATING OF IP00.



BOTTOM PROTECTIVE COVER

(3)-Ø0.87 [22] HOLE WITH RUBBER BUSHING




MODEL # CIMR-JU	VOLTAGE THREE PHASE (VAC)	OUTPUT CURRENT (A)		WEIGHT LBS (Kg)	HEAT LOSS (W)					
		ND	HD		ND (Fc=2kHz)			HD (Fc=8kHz)		
		INT	EXT	TOT	INT	EXT	TOT	INT	EXT	TOT
2A0010FXX	208/240	9.6	8.0	4.2 (1.9)	25.8	51.7	77.5	23.8	54.8	78.6

NOTE:  
XX DENOTES AA-ZZ

INT=INTERNAL COMPONENTS  
EXT=EXTERNAL HEATSINK  
TOT=TOTAL

FOR ADDITIONAL DETAILS AND SPECIFICATIONS, CONSULT MANUAL

TOLERANCES / REFERENCES:		<div><b>YASKAWA</b> <i>The Drive for Quality™</i></div> <div>THIS DOCUMENT AND INFORMATION CONTAINED IN IT ARE CONFIDENTIAL, AND CANNOT BE COPIED OR DISCLOSED IN WHOLE OR IN PART WITHOUT THE EXPRESS WRITTEN CONSENT OF YASKAWA ELECTRIC AMERICA INC.</div>	DRAWN: J. MATTAS	DATE 11-20-08	TITLE: J1000 DIMENSION DRAWING		
			CHECKED: J. PIOTROWSKI	DATE 4-16-09	FRAME SIZE 7		
			TECH: J. CAIRO	DATE 5-11-09	NEMA TYPE 1 ENCLOSURE		
			APPROVED: T. SASADA	DATE 5-14-09	2A0010F		
			ORIGINAL DESIGN: -	DATE -	DRAWING #:		
UNITS: IN[mm]	SCALE: 1:3				SIZE A	REVISION R00	PAGE 1 of 3
					DD.J1K.FR7.N1		

1 2 3 4 5 6 7 8

A

B

C

D

E

F

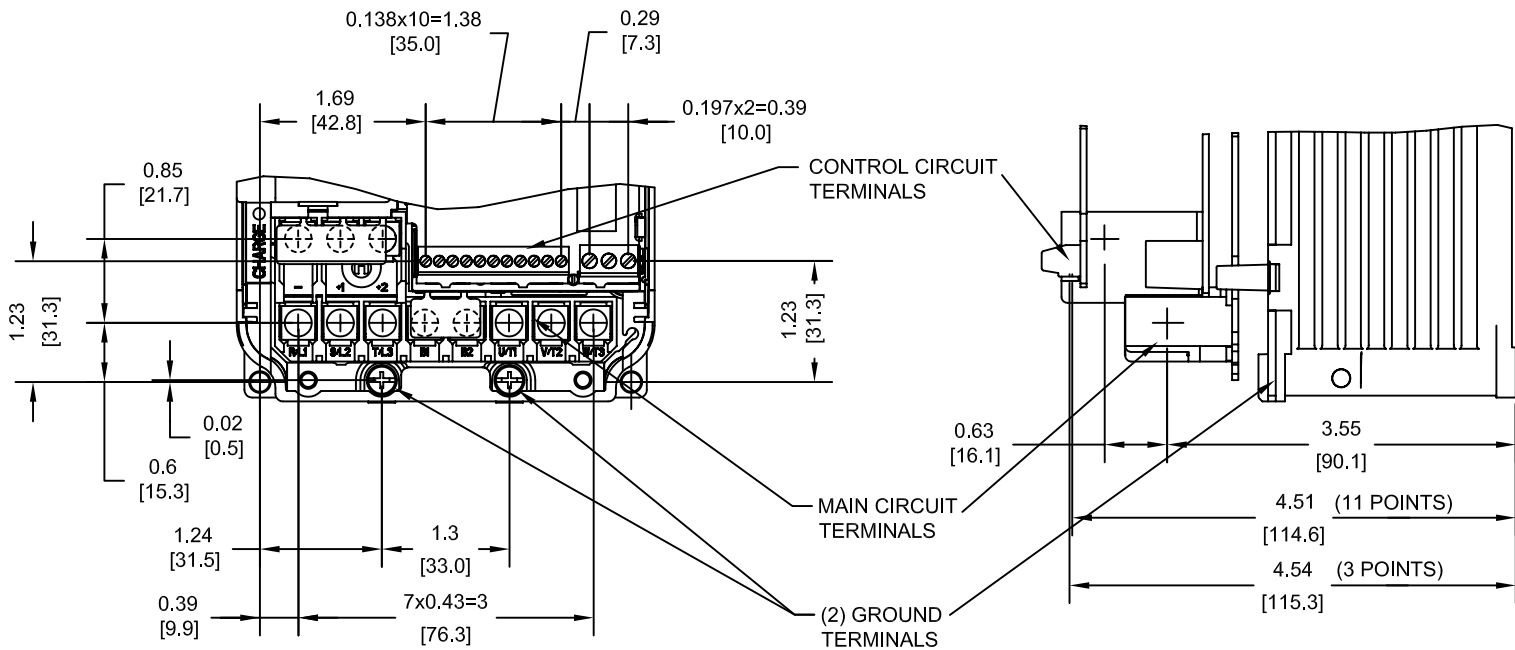
G

H

I

J

TERMINAL AND WIRING DETAILS (SCALE 1:2)




TERMINAL AND WIRE SPECIFICATIONS FOR  
MAIN CIRCUIT AND GROUND

MODEL #	TERMINAL SCREW	CLAMPING TORQUE lb.in.(N.m.)	WIRE RANGE AWG(mm <sup>2</sup> )
CIMR-JU	M4	10.6 TO 13.3 (1.2 TO 1.5)	22-10 (0.33-5.5)

NOTE: RATINGS APPLY TO BOTH FACTORY AND FIELD WIRING  
REFER TO APPLICABLE CODES FOR PROPER WIRE TYPE AND SIZE


FOR ADDITIONAL DETAILS AND SPECIFICATIONS, CONSULT MANUAL

TOLERANCES / REFERENCES:		<div><b>YASKAWA</b> <i>The Drive for Quality™</i></div> <div><i>THIS DOCUMENT AND INFORMATION CONTAINED IN IT ARE CONFIDENTIAL, AND CANNOT BE COPIED OR DISCLOSED IN WHOLE OR IN PART WITHOUT THE EXPRESS WRITTEN CONSENT OF YASKAWA ELECTRIC AMERICA INC.</i></div>	DRAWN: J. MATTAS	DATE 11-20-08	TITLE: J1000 DIMENSION DRAWING FRAME SIZE 7 NEMA TYPE 1 ENCLOSURE 2A0010F		
			CHECKED: J. PIOTROWSKI	DATE 4-16-09			
			TECH: J. CAIRO	DATE 5-11-09			
			APPROVED: T. SASADA	DATE 5-14-09			
UNITS: IN[mm]	SCALE: BY VIEW		ORIGINAL DESIGN: -	DATE -	SIZE A	REVISION R00	PAGE 2 of 3
					DRAWING #: <b>DD.J1K.FR7.N1</b>		

NOTE:  
FOR SIDE-BY-SIDE MOUNTING  
CONSULT MANUAL

**NOTES:**

1. EXTERNAL HEATSINK CONFIGURATION REQUIRES MOUNTING KIT
2. EXPOSED HEATSINK RECOMMENDED CLEARANCE  $D=2.76"$  MINUS PANEL THICKNESS

TOLERANCES / REFERENCES:		 <b>YASKAWA</b> <i>The Drive for Quality™</i> THIS DOCUMENT AND INFORMATION CONTAINED IN IT ARE CONFIDENTIAL, AND CANNOT BE COPIED OR DISCLOSED IN WHOLE OR IN PART WITHOUT THE EXPRESS WRITTEN CONSENT OF YASKAWA ELECTRIC AMERICA INC.	DRAWN: J. MATTAS	DATE 11-20-08	TITLE: J1000 DIMENSION DRAWING FRAME SIZE 7 NEMA TYPE 1 ENCLOSURE 2A0010F		
			CHECKED: J. PIOTROWSKI	DATE 4-16-09			
			TECH: J. CAIRO	DATE 5-11-09			
			APPROVED: T. SASADA	DATE 5-14-09			
UNITS: IN[mm]	SCALE: BY VIEW		ORIGINAL DESIGN: -	DATE -	DRAWING #: <div> <div>SIZE A</div> <div>REVISION R00</div> <div>PAGE 3 of 3</div> </div> <b>DD.J1K.FR7.N1</b>		