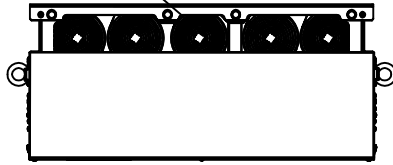
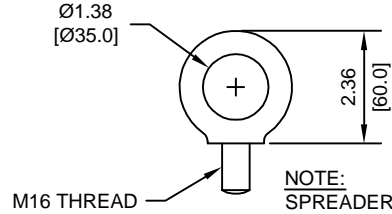


(5) EXTERNAL COOLING FANS

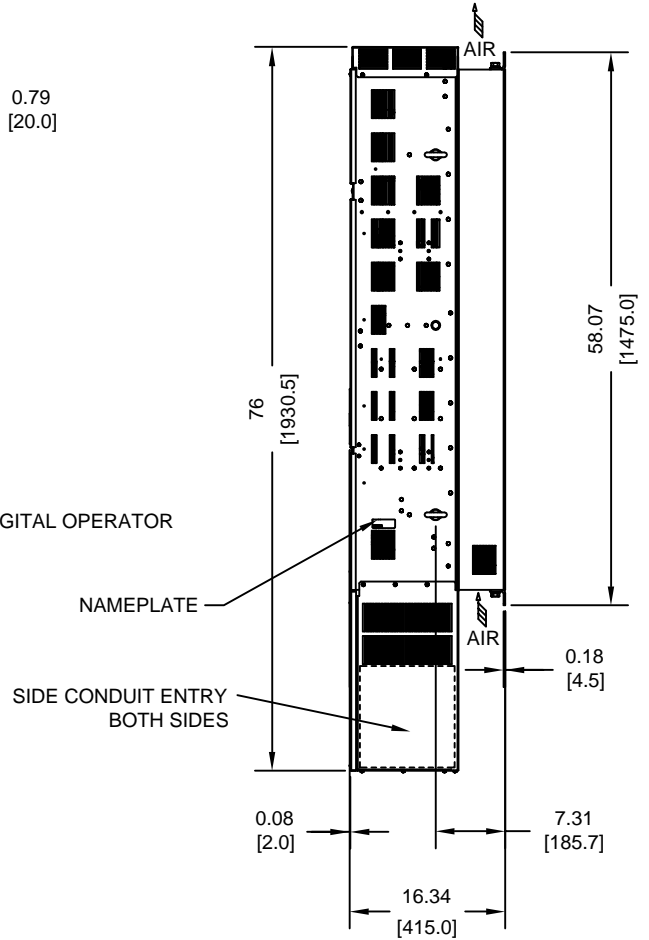
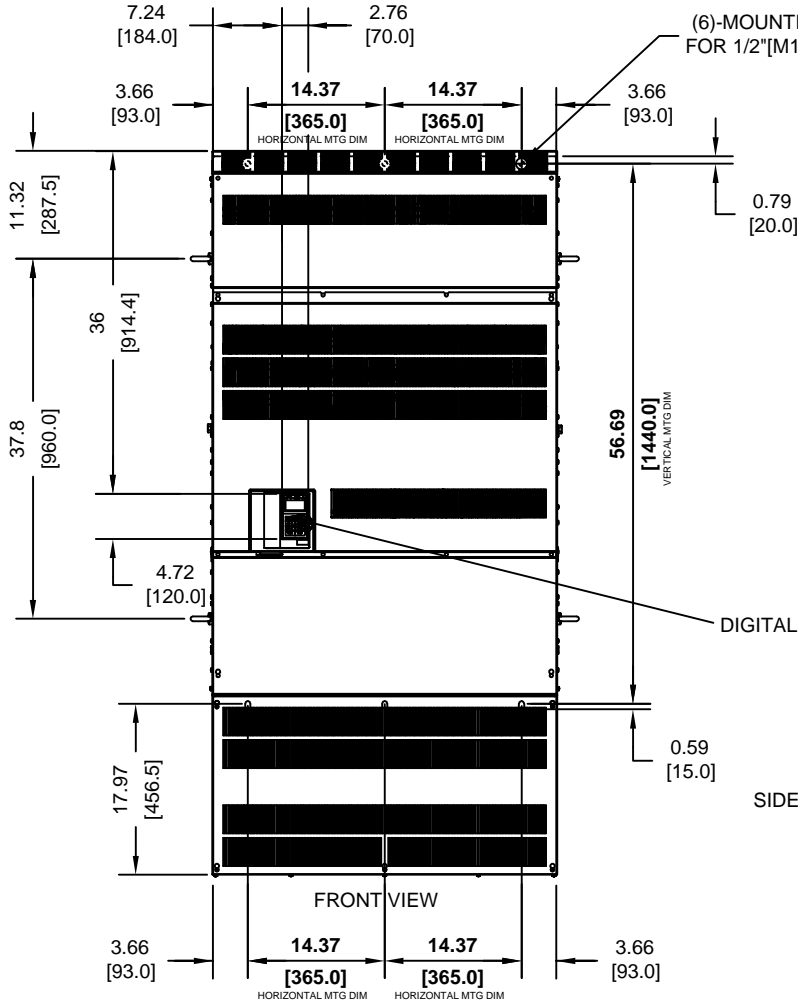


LIFTING AND EYEBOLT DETAILS



NOTE:
SPREADER BAR REQUIRED TO AVOID DAMAGE DURING LIFTING

(6)-MOUNTING HOLES FOR 1/2" [M12] SCREWS



FRONT VIEW

DIGITAL OPERATOR

NAMEPLATE

SIDE CONDUIT ENTRY BOTH SIDES

BOTTOM CONDUIT ENTRY

MODEL #	VOLTAGE (VAC)	OUTPUT CURRENT (A)	WEIGHT LBS (Kg)	HEAT LOSS (W)		
				INT	EXT	TOTAL
CIMR-P7U 4300	480	675	940 (427)	2482	5838	8320

INT=INTERNAL COMPONENTS
EXT=EXTERNAL HEATSINK

FOR ADDITIONAL DETAILS AND SPECIFICATIONS, CONSULT MANUAL

TOLERANCES/REFERENCES:

UNITS: IN[mm] SCALE: 1:20

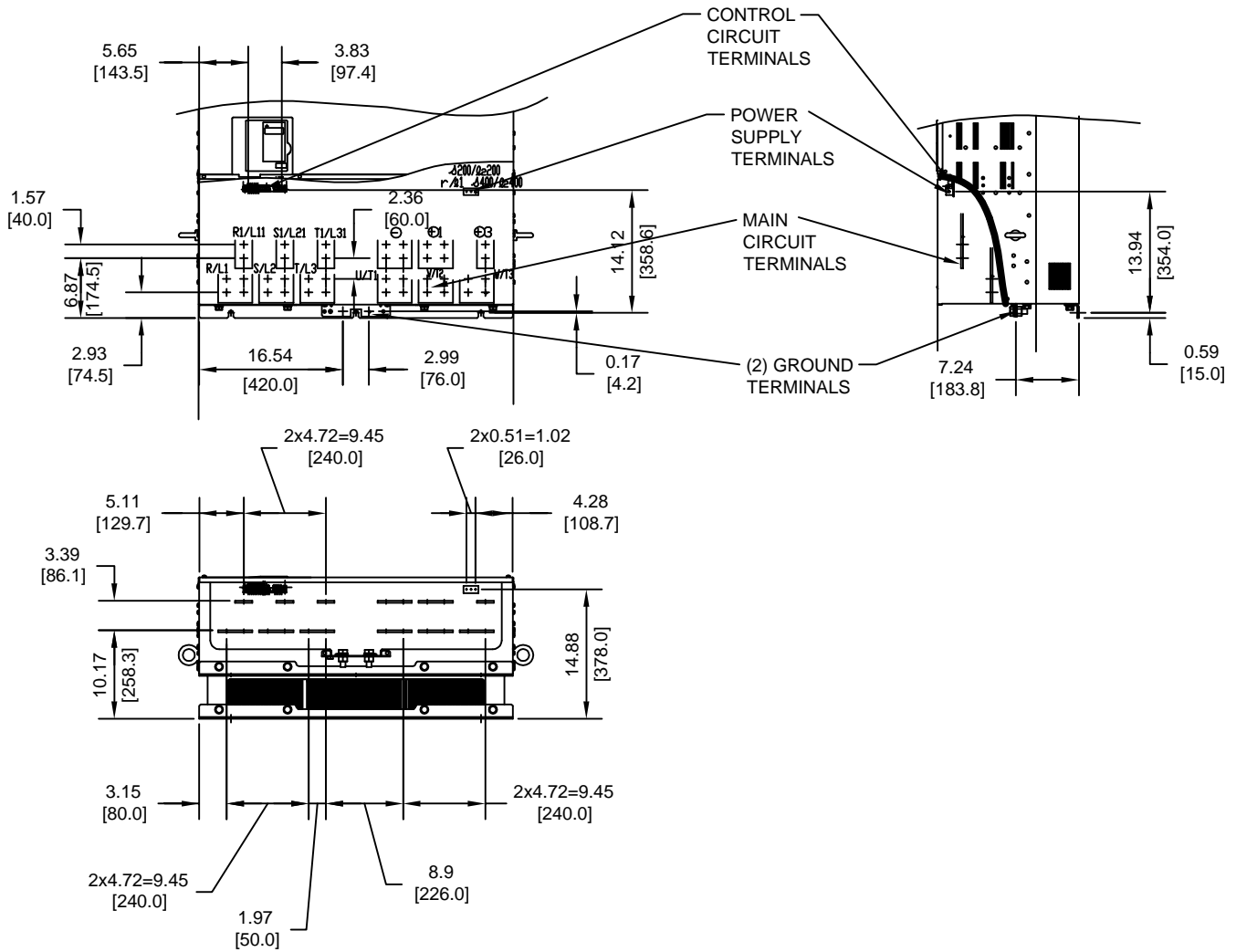
YASKAWA
A World of Automation Solutions™

YASKAWA ELECTRIC AMERICA, INC.
Corporate Headquarters
2121 Norman Drive South
Waukegan, IL 60085
1-800-YASKAWA
http://www.yaskawa.com

DRAWN: J. MATTAS	DATE 5-21-08
CHECKED: J. MATTAS	DATE 7-25-08
TECH: J. CAIRO	DATE 8-1-08
APPROVED: T. SASADA	DATE 8-8-08
ORIGINAL DESIGN: -	DATE -

TITLE: P7 DIMENSION DRAWING FRAME SIZE 15 NEMA TYPE 1/IP20 ENCLOSURE P7U4300		
SIZE A	REVISION R00	PAGE 1 of 3
DRAWING #: DD.P7.FR15.N1.01		

TERMINAL AND WIRING DETAILS (SCALE 1:20)




TERMINAL AND WIRE SPECIFICATIONS FOR
MAIN CIRCUIT AND GROUND

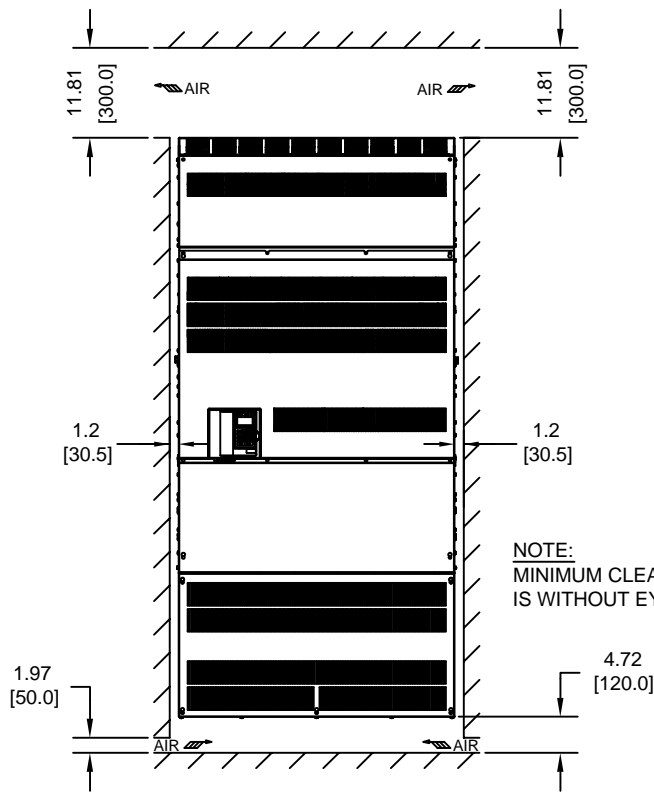
MODEL #	TERMINAL SYMBOL	TERMINAL SCREW	CLAMPING TORQUE lb.in.(N.m.)
CIMR-P7U	R/L1, S/L2, T/L3, U, V, W, G1, G2, G3, U/T1, V/T2, W/T3, R1/L11, S1/L21, T1/L31	M16	694 TO 867 (78.4 TO 98.0)
4300	r1, s200, s400, s400	M4	11.4 TO 12.3 (1.3 TO 1.4)

NOTE: REFER TO APPLICABLE CODES FOR PROPER WIRE TYPE AND SIZE

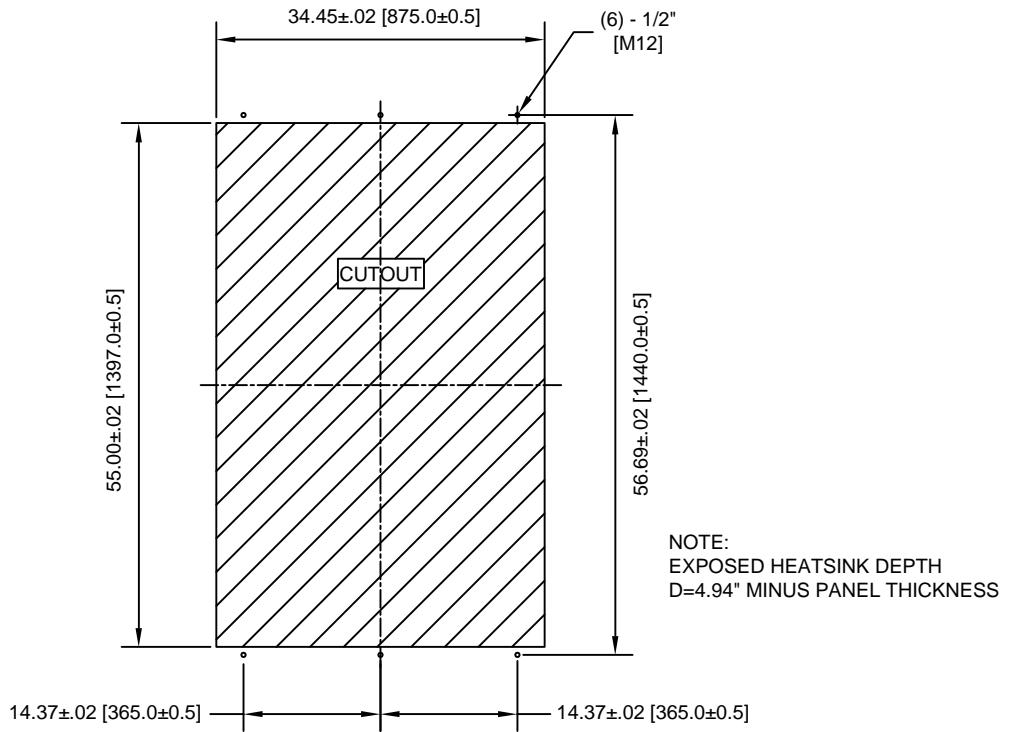
FOR ADDITIONAL DETAILS AND SPECIFICATIONS, CONSULT MANUAL

TOLERANCES/REFERENCES: - - - - - - - - - -	 YASKAWA <i>A World of Automation Solutions™</i> YASKAWA ELECTRIC AMERICA, INC. Corporate Headquarters 2121 Norman Drive South Waukegan, IL 60085 1-800-YASKAWA http://www.yaskawa.com	DRAWN: J. MATTAS	DATE 5-21-08	TITLE: P7 DIMENSION DRAWING		
		CHECKED: J. MATTAS	DATE 7-25-08	FRAME SIZE 15		
		TECH: J. CAIRO	DATE 8-1-08	NEMA TYPE 1/IP20 ENCLOSURE		
		APPROVED: T. SASADA	DATE 8-8-08	P7U4300		
UNITS: IN[mm]	SCALE: BY VIEW	ORIGINAL DESIGN: -	DATE -	SIZE A	REVISION R00	PAGE 2 of 3
				DRAWING #: DD.P7.FR15.N1.01		


MINIMUM INSTALLATION CLEARANCES (SCALE 1:25)



PANEL CUTOUT FOR EXTERNAL HEATSINK MOUNTING CONFIGURATION (SCALE 1:20)



FOR ADDITIONAL DETAILS AND SPECIFICATIONS, CONSULT MANUAL

TOLERANCES/REFERENCES: - - - - - - - - - -		 YASKAWA <i>A World of Automation Solutions™</i> YASKAWA ELECTRIC AMERICA, INC. Corporate Headquarters 2121 Norman Drive South Waukegan, IL 60085 1-800-YASKAWA http://www.yaskawa.com	DRAWN: J. MATTAS	DATE: 5-21-08	TITLE: P7 DIMENSION DRAWING		
UNITS: IN[mm]			CHECKED: J. MATTAS	DATE: 7-25-08	FRAME SIZE 15 NEMA TYPE 1/IP20 ENCLOSURE P7U4300		
SCALE: BY VIEW		TECH: J. CAIRO	DATE: 8-1-08	SIZE: A	REVISION: R00	PAGE: 3 of 3	
		APPROVED: T. SASADA	DATE: 8-8-08	DRAWING #: DD.P7.FR15.N1.01			
		ORIGINAL DESIGN: -	DATE: -				