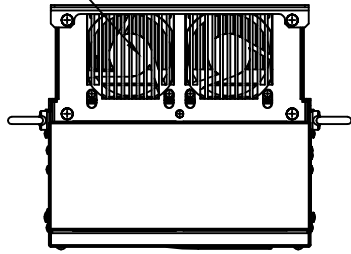
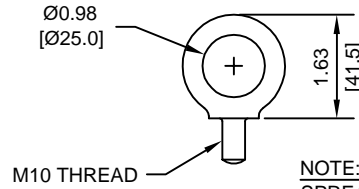


(2) EXTERNAL COOLING FANS

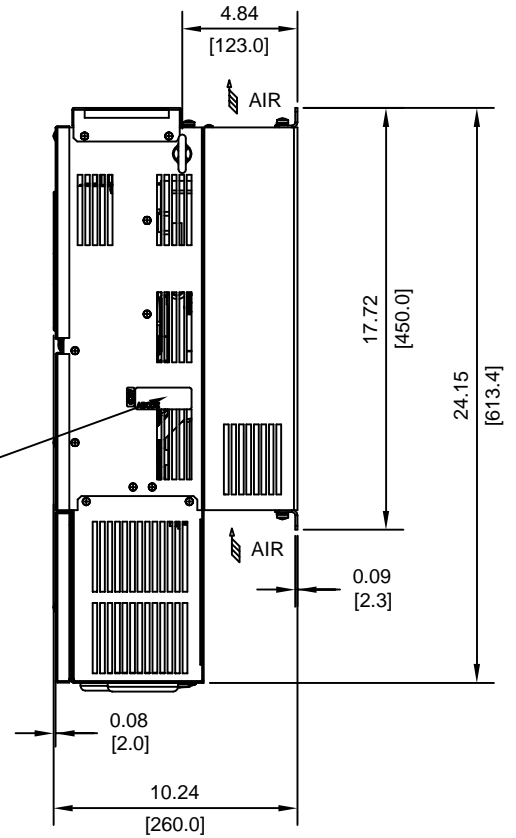
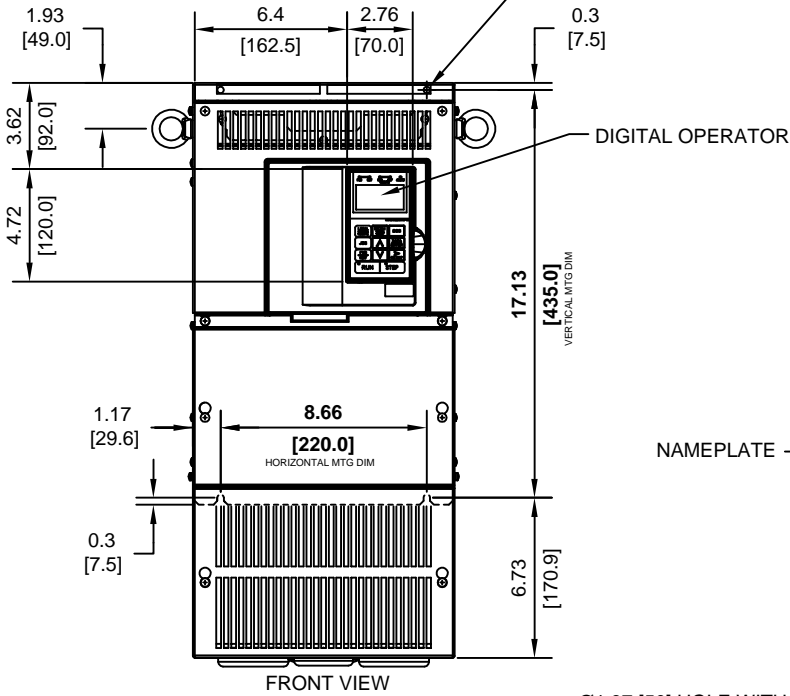


LIFTING AND EYEBOLT DETAILS



NOTE:  
SPREADER BAR REQUIRED TO AVOID DAMAGE DURING LIFTING

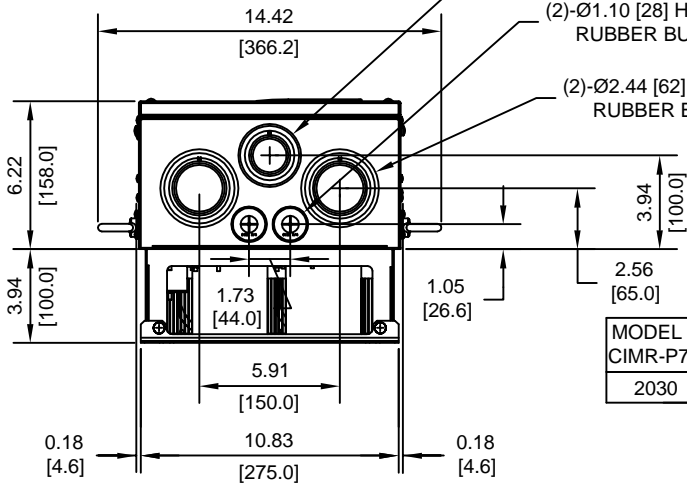
(4)-MOUNTING HOLES FOR 1/4"[M6] SCREWS



Ø1.97 [50] HOLE WITH RUBBER BUSHING

(2)-Ø1.10 [28] HOLE WITH RUBBER BUSHING

(2)-Ø2.44 [62] HOLE WITH RUBBER BUSHING



MODEL #	VOLTAGE (VAC)	OUTPUT CURRENT (A)	WEIGHT LBS (Kg)	HEAT LOSS (W)		
				INT	EXT	TOTAL
2030	208/240	115	59 (27)	334	883	1217

INT=INTERNAL COMPONENTS  
EXT=EXTERNAL HEATSINK

FOR ADDITIONAL DETAILS AND SPECIFICATIONS, CONSULT MANUAL

TOLERANCES/REFERENCES:

UNITS: IN[mm]      SCALE: 1:8

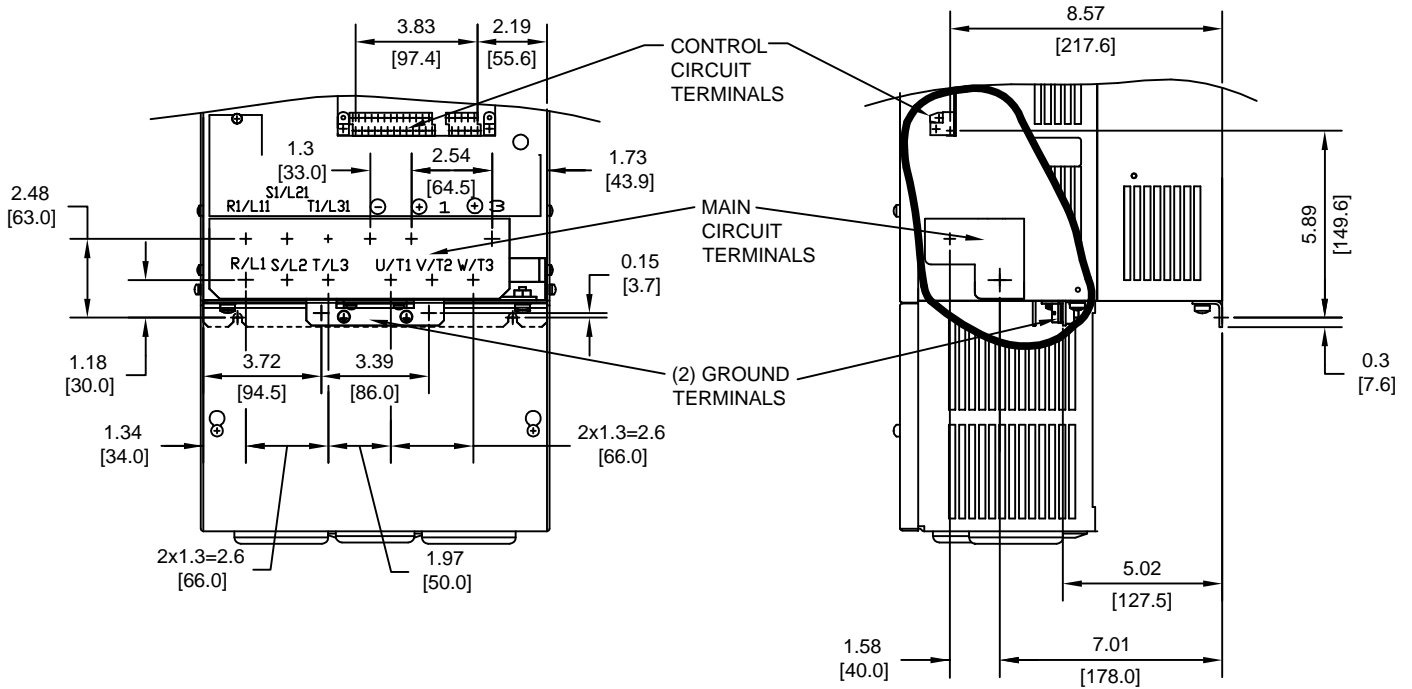
**YASKAWA**  
A World of Automation Solutions™

YASKAWA ELECTRIC AMERICA, INC.  
Corporate Headquarters  
2121 Norman Drive South  
Waukegan, IL 60085  
1-800-YASKAWA  
http://www.yaskawa.com

DRAWN:	J. MATTAS	DATE:	4-12-05
CHECKED:	M. RUCINSKI	DATE:	6-5-05
TECH:	J. CAIRO	DATE:	4-13-05
APPROVED:	T. SASADA	DATE:	6-8-05
ORIGINAL DESIGN:	-	DATE:	-

TITLE:		
P7 DIMENSION DRAWING		
FRAME SIZE 6A		
NEMA TYPE 1/IP20 ENCLOSURE		
P7U2030		
SIZE	REVISION	PAGE
A	R00	1 of 3
DRAWING #:		
DD.P7.FR6A.N1.01		

TERMINAL AND WIRING DETAILS (SCALE 1:6)




TERMINAL AND WIRE SPECIFICATIONS FOR  
MAIN CIRCUIT AND GROUND

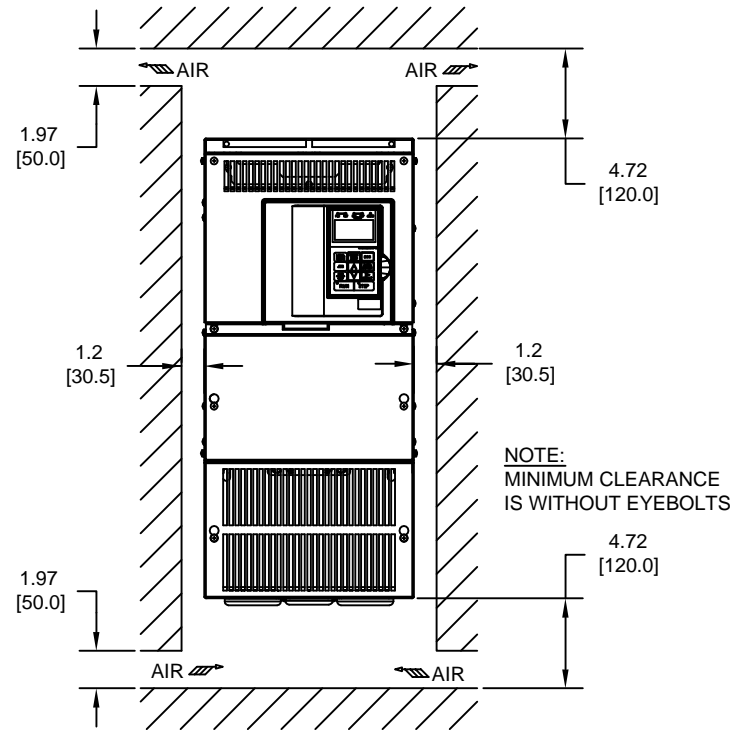
MODEL #	TERMINAL SYMBOL	TERMINAL SCREW	CLAMPING TORQUE lb.in.(N.m.)	WIRE RANGE AWG(mm <sup>2</sup> )
2030	R/L1, S/L2, T/L3, ⊖, ⊕1, R1/L11, S1/L21, T1/L31, U/T1, V/T2, W/T3	M8	79.2 TO 88.0 (9.0 TO 10.0)	8-1/0 (8-60)
	⊕3	M6	35.2 TO 44.0 (4.0 TO 5.0)	8-4 (8-22)
	⊖	M8	79.2 TO 88.0 (9.0 TO 10.0)	SEE NOTE

NOTE: REFER TO APPLICABLE CODES FOR PROPER WIRE TYPE AND SIZE

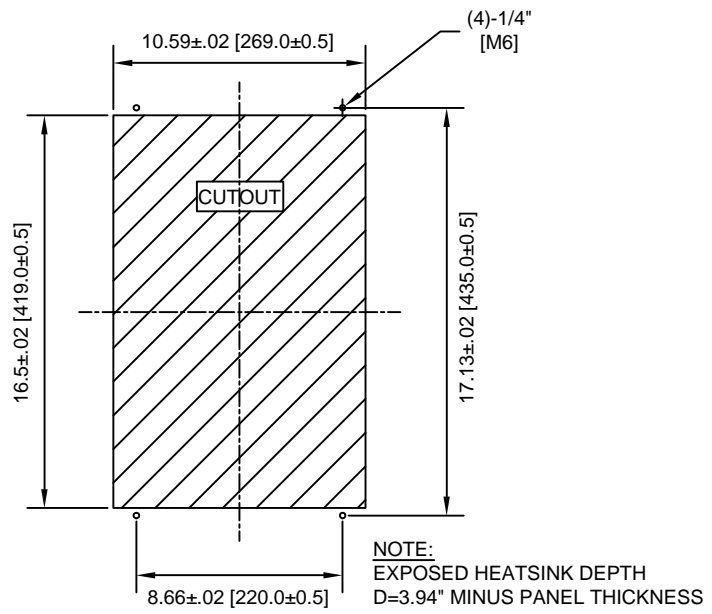
FOR ADDITIONAL DETAILS AND SPECIFICATIONS, CONSULT MANUAL

TOLERANCES/REFERENCES: - - - - - -	 <b>YASKAWA</b> <i>A World of Automation Solutions™</i> <b>YASKAWA ELECTRIC AMERICA, INC.</b> Corporate Headquarters 2121 Norman Drive South Waukegan, IL 60085 1-800-YASKAWA <a href="http://www.yaskawa.com">http://www.yaskawa.com</a>	DRAWN: J. MATTAS	DATE 4-12-05	TITLE: P7 DIMENSION DRAWING		
		CHECKED: M. RUCINSKI	DATE 6-5-05	FRAME SIZE 6A		
		TECH: J. CAIRO	DATE 4-13-05	NEMA TYPE 1/IP20 ENCLOSURE		
		APPROVED: T. SASADA	DATE 6-8-05	P7U2030		
UNITS: IN[mm]	SCALE: BY VIEW	ORIGINAL DESIGN: -	DATE -	SIZE A	REVISION R00	PAGE 2 of 3
				DRAWING #: <b>DD.P7.FR6A.N1.01</b>		


**MINIMUM INSTALLATION CLEARANCES (SCALE 1:10)**



**PANEL CUTOUT FOR EXTERNAL HEATSINK MOUNTING CONFIGURATION (SCALE 1:8)**



FOR ADDITIONAL DETAILS AND SPECIFICATIONS, CONSULT MANUAL

TOLERANCES/REFERENCES: -		 <b>YASKAWA</b> <i>A World of Automation Solutions™</i> <b>YASKAWA ELECTRIC AMERICA, INC.</b> Corporate Headquarters 2121 Norman Drive South Waukegan, IL 60085 1-800-YASKAWA <a href="http://www.yaskawa.com">http://www.yaskawa.com</a>	DRAWN: <b>J. MATTAS</b> DATE: <b>4-12-05</b>	TITLE: <b>P7 DIMENSION DRAWING</b>
UNITS: <b>IN[mm]</b>	SCALE: <b>BY VIEW</b>		CHECKED: <b>M. RUCINSKI</b> DATE: <b>6-5-05</b>	FRAME SIZE 6A NEMA TYPE 1/IP20 ENCLOSURE P7U2030
		TECH: <b>J. CAIRO</b> DATE: <b>4-13-05</b>	DATE: <b>4-13-05</b>	REVISION <b>R00</b>
		APPROVED: <b>T. SASADA</b> DATE: <b>6-8-05</b>	DATE: <b>6-8-05</b>	PAGE <b>3 of 3</b>
		ORIGINAL DESIGN: -	DATE: -	DRAWING #: <b>DD.P7.FR6A.N1.01</b>