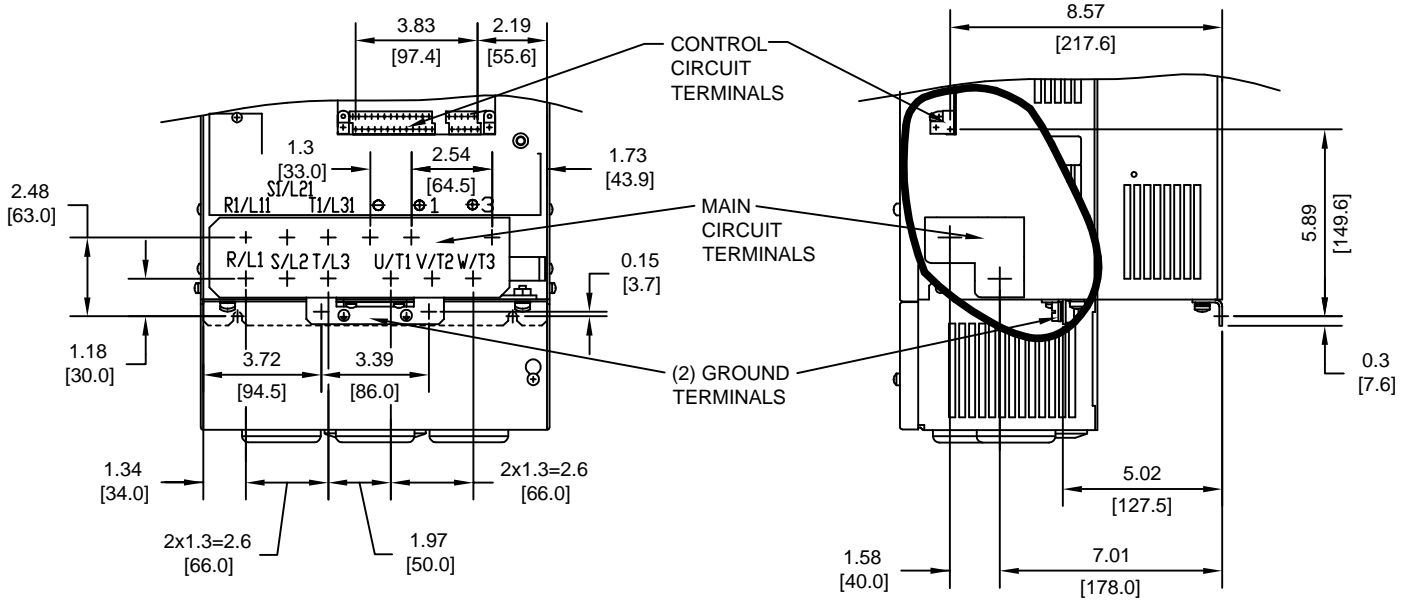


TERMINAL AND WIRING DETAILS (SCALE 1:6)




TERMINAL AND WIRE SPECIFICATIONS FOR MAIN CIRCUIT AND GROUND

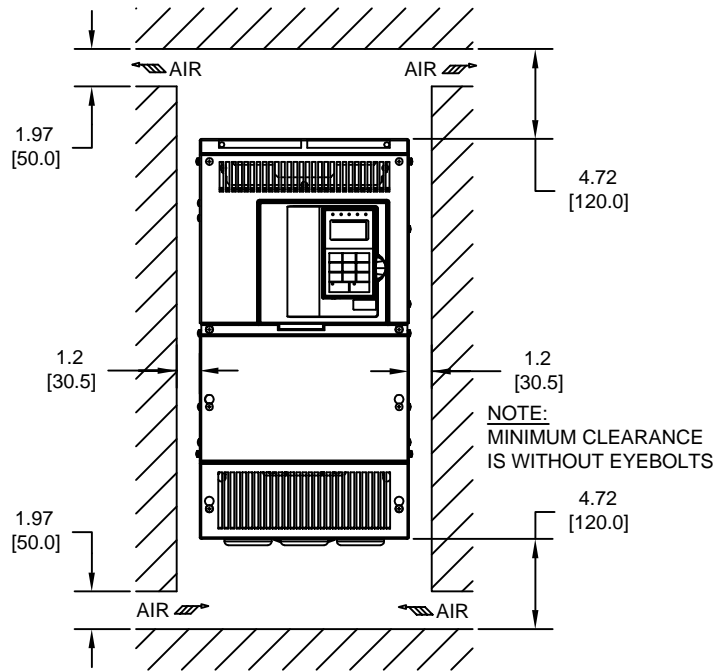
MODEL # CIMR-P7U	TERMINAL SYMBOL	TERMINAL SCREW	CLAMPING TORQUE lb.in.(N.m.)	WIRE RANGE AWG(mm ²)
4022	R/L1, S/L2, T/L3, \odot , \oplus 1, R1/L11, S1/L21, T1/L31, U/T1, V/T2, W/T3.	M6	35.2 TO 44.0 (4.0 TO 5.0)	12-3 (3.5-30)
	\oplus 3	M6	35.2 TO 44.0 (4.0 TO 5.0)	12-8 (3.5-8)
	\oplus	M8	79.2 TO 88.0 (9.0 TO 10.0)	SEE NOTE
4030	R/L1, S/L2, T/L3, \odot , \oplus 1, R1/L11, S1/L21, T1/L31, U/T1, V/T2, W/T3.	M6	35.2 TO 44.0 (4.0 TO 5.0)	12-3 (3.5-30)
	\oplus 3	M6	35.2 TO 44.0 (4.0 TO 5.0)	12-8 (3.5-8)
	\oplus	M8	79.2 TO 88.0 (9.0 TO 10.0)	SEE NOTE

NOTE: REFER TO APPLICABLE CODES FOR PROPER WIRE TYPE AND SIZE

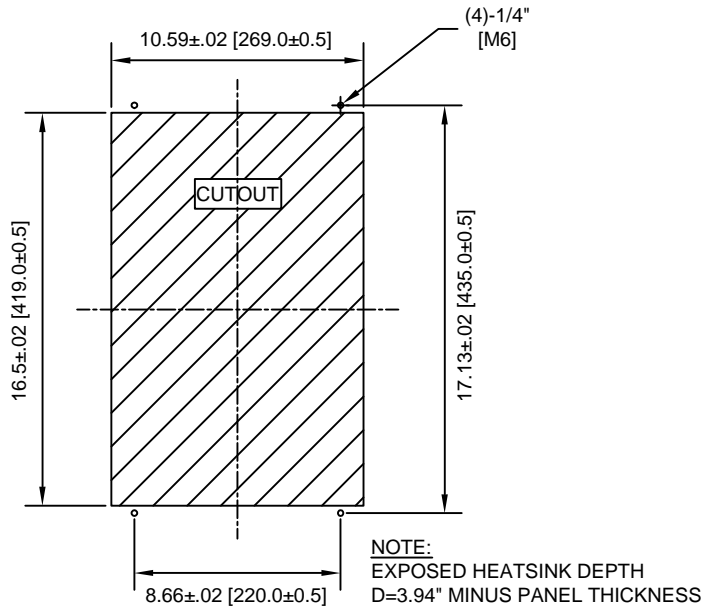
FOR ADDITIONAL DETAILS AND SPECIFICATIONS, CONSULT MANUAL

TOLERANCES/REFERENCES: - - - - - -	 YASKAWA <i>A World of Automation Solutions™</i> YASKAWA ELECTRIC AMERICA, INC. Corporate Headquarters 2121 Norman Drive South Waukegan, IL 60085 1-800-YASKAWA http://www.yaskawa.com	DRAWN: J. MATTAS	DATE: 4-12-05	TITLE: P7 DIMENSION DRAWING FRAME SIZE 6B NEMA TYPE 1/IP20 ENCLOSURE P7U4022, 4030				
		CHECKED: M. RUCINSKI	DATE: 6-5-05	TECH: J. CAIRO	DATE: 4-13-05	SIZE: A	REVISION: R00	PAGE: 2 of 3
		APPROVED: T. SASADA	DATE: 6-8-05	DRAWING #: DD.P7.FR6B.N1.01				
		ORIGINAL DESIGN: -	DATE: -					


MINIMUM INSTALLATION CLEARANCES (SCALE 1:10)



PANEL CUTOUT FOR EXTERNAL HEATSINK MOUNTING CONFIGURATION (SCALE 1:8)



FOR ADDITIONAL DETAILS AND SPECIFICATIONS, CONSULT MANUAL

TOLERANCES/REFERENCES: - - - - - - - - - -		 YASKAWA <i>A World of Automation Solutions™</i> YASKAWA ELECTRIC AMERICA, INC. Corporate Headquarters 2121 Norman Drive South Waukegan, IL 60085 1-800-YASKAWA http://www.yaskawa.com	DRAWN: J. MATTAS DATE: 4-12-05	TITLE: P7 DIMENSION DRAWING
UNITS: IN[mm]	SCALE: BY VIEW		CHECKED: M. RUCINSKI DATE: 6-5-05	DATE: 6-5-05
		TECH: J. CAIRO DATE: 4-13-05	DATE: 6-8-05	SIZE: A REVISION: R00 PAGE: 3 of 3
		APPROVED: T. SASADA ORIGINAL DESIGN: -	DATE: -	DRAWING #: DD.P7.FR6B.N1.01