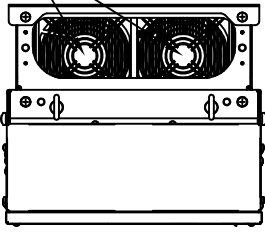
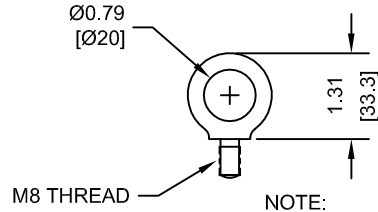


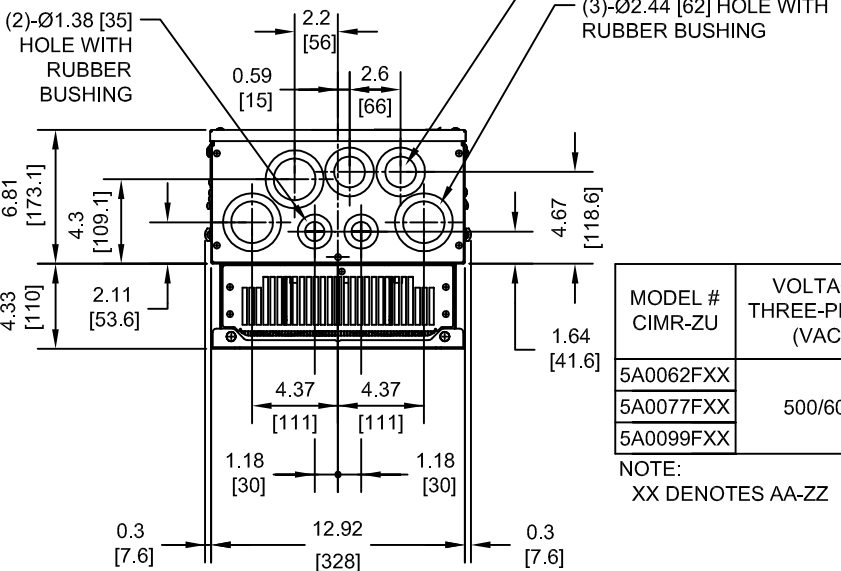
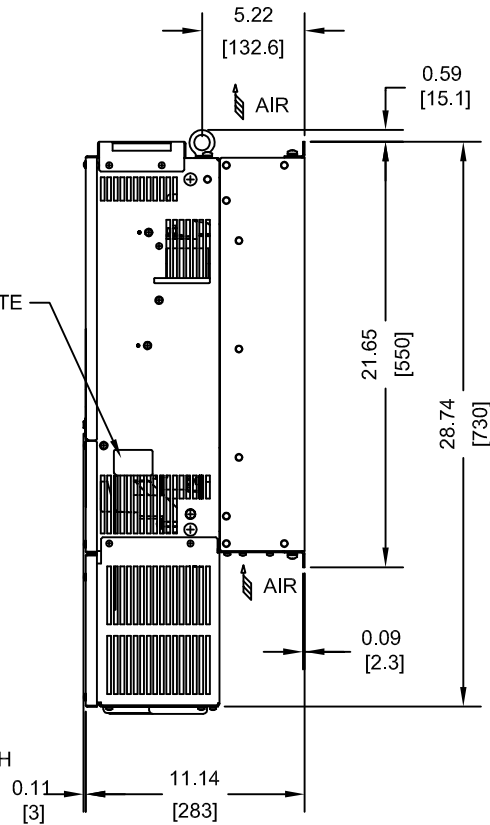
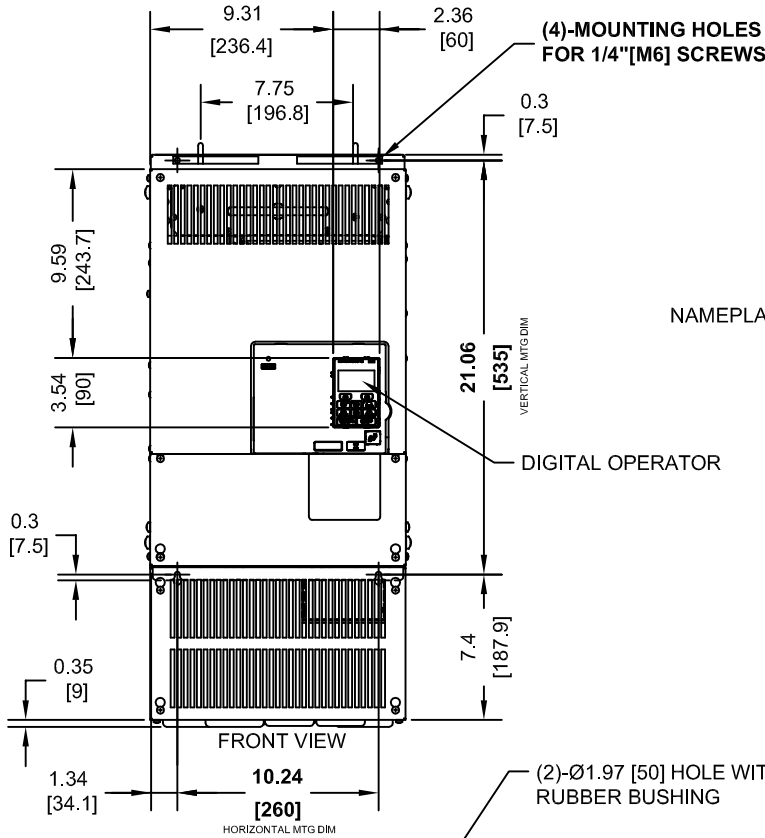
(2) EXTERNAL COOLING FANS



LIFTING AND EYEBOLT DETAILS



NOTE:  
SPREADER BAR REQUIRED TO AVOID DAMAGE DURING LIFTING



MODEL # CIMR-ZU	VOLTAGE THREE-PHASE (VAC)	OUTPUT CURRENT (A)	WEIGHT LBS (Kg)	HEAT LOSS (W) (Fc=2kHz)		
				INT	EXT	TOT
5A0062FXX	500/600	62	99.0 (45)	279	791	1070
5A0077FXX		77	99.0 (45)	329	959	1288
5A0099FXX		99	99.0 (45)	412	1253	1665

NOTE:  
XX DENOTES AA-ZZ

INT=INTERNAL COMPONENTS  
EXT=EXTERNAL HEATSINK  
TOT=TOTAL

FOR ADDITIONAL DETAILS AND SPECIFICATIONS, CONSULT MANUAL

TOLERANCES / REFERENCES:



THIS DOCUMENT AND INFORMATION CONTAINED IN IT ARE CONFIDENTIAL, AND CANNOT BE COPIED OR DISCLOSED IN WHOLE OR IN PART WITHOUT THE EXPRESS WRITTEN CONSENT OF YASKAWA AMERICA, INC.

DRAWN: J. MATTAS

DATE: 2-12-14

TITLE: Z1000 600V DIMENSION DRAWING  
FRAME SIZE 10  
NEMA TYPE 1 ENCLOSURE  
5A0062, 5A0077, 5A0099

CHECKED: J. PIOTROWSKI

DATE: 2-21-14

TECH: J. BORJA

DATE: 2-24-14

APPROVED: J. CAIRO

DATE: 2-26-14

SIZE	REVISION	PAGE
A	R00	1 of 3

UNITS: IN [mm] SCALE: 1:10

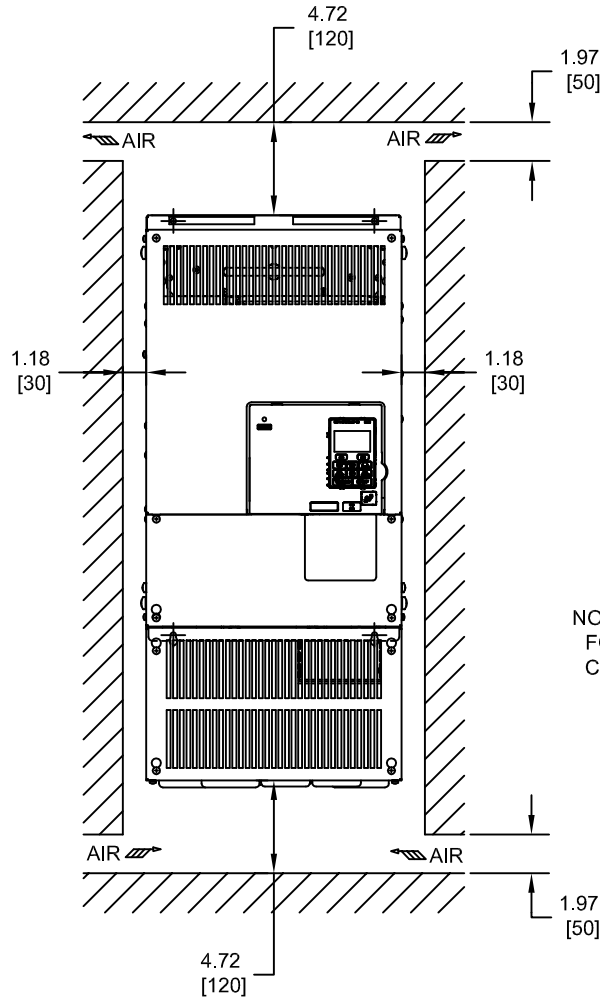
ORIGINAL DESIGN: -

DATE: -

DRAWING #: DD.Z1K6.FR10.N1

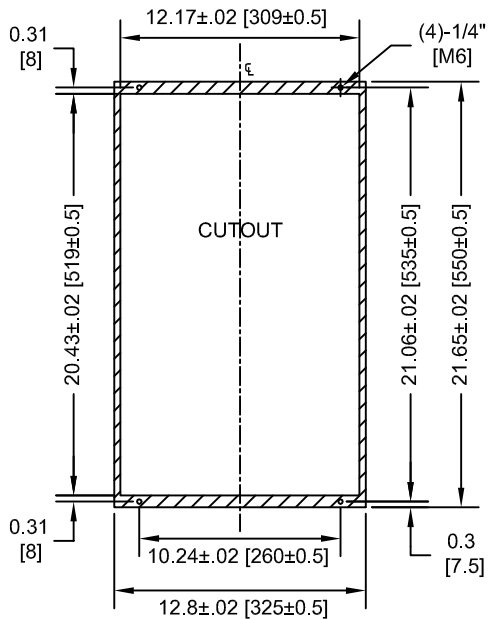


MINIMUM INSTALLATION CLEARANCES (SCALE 1:10)



NOTE:  
FOR SIDE-BY-SIDE MOUNTING  
CONSULT MANUAL

PANEL CUTOUT FOR EXTERNAL HEATSINK  
MOUNTING CONFIGURATION (SCALE 1:10)



NOTE:  
EXPOSED HEATSINK DEPTH  
D=4.33" MINUS PANEL THICKNESS

FOR ADDITIONAL DETAILS AND SPECIFICATIONS, CONSULT MANUAL

TOLERANCES / REFERENCES:			DRAWN: J. MATTAS DATE: 2-12-14	TITLE: Z1000 600V DIMENSION DRAWING FRAME SIZE 10
			CHECKED: J. PIOTROWSKI DATE: 2-21-14	NEMA TYPE 1 ENCLOSURE 5A0062, 5A0077, 5A0099
		THIS DOCUMENT AND INFORMATION CONTAINED IN IT ARE CONFIDENTIAL, AND CANNOT BE COPIED OR DISCLOSED IN WHOLE OR IN PART WITHOUT THE EXPRESS WRITTEN CONSENT OF YASKAWA AMERICA, INC.	TECH: J. BORJA DATE: 2-24-14	SIZE: A
UNITS: IN [mm]	SCALE: BY VIEW	APPROVED: J. CAIRO DATE: 2-26-14	REVISION: R00	PAGE: 3 of 3
		ORIGINAL DESIGN: -	DATE: -	DRAWING #: DD.Z1K6.FR10.N1