

**CONTROL TRANSFORMER PRIMARY CONNECTIONS**

INPUT VOLTS	TERMINALS	JUMPER LOCATION
230/240	(H1) (H4)	(H1) TO (H3)
460/480	(H1) (H4)	(H2) TO (H4)
600	(H1) (H2)	NONE

**CONTROL TRANSFORMER AND CABINET BLOWER(S) IF PRESENT**

**OPTION PL DYNAMIC BRAKING**  
SEE A1000 TECHNICAL MANUAL FOR WIRING INSTRUCTIONS

**OPTION TY HAND-OFF-AUTO SWITCH**  
CONTACT SEQUENCE CHART FOR S2  
X - INDICATES CONTACT CLOSED

CONTACT	POSITION	MANUF. LOCATION
1	HAND	1RO
2	OFF	1LO
3	AUTO	2RO

**OPTION TB BLOWER MOTOR STARTER**

**OPTION TZ MANUAL SPEED POT**  
PART NO. UR5N0008  
MANUAL SPEED POT  
2.5K OHM

**OPTION PH 3% LOAD REACTOR**

**OPTION TY HAND-OFF-AUTO SWITCH**  
CONTACT SEQUENCE CHART FOR S2  
X - INDICATES CONTACT CLOSED

CONTACT	POSITION	MANUF. LOCATION
1	HAND	1RO
2	OFF	1LO
3	AUTO	2RO

**OPTION TB BLOWER MOTOR STARTER**

**OPTION TZ MANUAL SPEED POT**  
PART NO. UR5N0008  
MANUAL SPEED POT  
2.5K OHM

**OPTION PH 3% LOAD REACTOR**

**OPTION PX 3% BUS REACTOR**  
FOR BASE NO'S A002-A080, B001-B040, C1P3-C032

**OPTION PN DELTA-WYE CAPACITIVE INPUT FILTER**

**OPTION PR 3% INPUT REACTOR**

**OPTION PF DRIVE INPUT FUSES**

**OPTION PY REMOTE MOUNT DYNAMIC BRAKING RESISTOR UNIT**

**OPTION TY HAND-OFF-AUTO SWITCH**  
CONTACT SEQUENCE CHART FOR S2  
X - INDICATES CONTACT CLOSED

CONTACT	POSITION	MANUF. LOCATION
1	HAND	1RO
2	OFF	1LO
3	AUTO	2RO

**OPTION TB BLOWER MOTOR STARTER**

**OPTION TZ MANUAL SPEED POT**  
PART NO. UR5N0008  
MANUAL SPEED POT  
2.5K OHM

**OPTION PH 3% LOAD REACTOR**

**OPTION PX 3% BUS REACTOR**  
FOR BASE NO'S A002-A080, B001-B040, C1P3-C032

**OPTION PN DELTA-WYE CAPACITIVE INPUT FILTER**

**OPTION PF DRIVE INPUT FUSES**

**OPTION PY REMOTE MOUNT DYNAMIC BRAKING RESISTOR UNIT**

**OPTION TY HAND-OFF-AUTO SWITCH**  
CONTACT SEQUENCE CHART FOR S2  
X - INDICATES CONTACT CLOSED

CONTACT	POSITION	MANUF. LOCATION
1	HAND	1RO
2	OFF	1LO
3	AUTO	2RO

**OPTION TB BLOWER MOTOR STARTER**

**OPTION TZ MANUAL SPEED POT**  
PART NO. UR5N0008  
MANUAL SPEED POT  
2.5K OHM

**OPTION PH 3% LOAD REACTOR**

**OPTION PX 3% BUS REACTOR**  
FOR BASE NO'S A002-A080, B001-B040, C1P3-C032

**OPTION PN DELTA-WYE CAPACITIVE INPUT FILTER**

**OPTION PF DRIVE INPUT FUSES**

**OPTION PY REMOTE MOUNT DYNAMIC BRAKING RESISTOR UNIT**

**OPTION TY HAND-OFF-AUTO SWITCH**  
CONTACT SEQUENCE CHART FOR S2  
X - INDICATES CONTACT CLOSED

CONTACT	POSITION	MANUF. LOCATION
1	HAND	1RO
2	OFF	1LO
3	AUTO	2RO

**OPTION TB BLOWER MOTOR STARTER**

**OPTION TZ MANUAL SPEED POT**  
PART NO. UR5N0008  
MANUAL SPEED POT  
2.5K OHM

**OPTION PH 3% LOAD REACTOR**

**OPTION PX 3% BUS REACTOR**  
FOR BASE NO'S A002-A080, B001-B040, C1P3-C032

**OPTION PN DELTA-WYE CAPACITIVE INPUT FILTER**

**OPTION PF DRIVE INPUT FUSES**

**OPTION PY REMOTE MOUNT DYNAMIC BRAKING RESISTOR UNIT**

**OPTION TY HAND-OFF-AUTO SWITCH**  
CONTACT SEQUENCE CHART FOR S2  
X - INDICATES CONTACT CLOSED

CONTACT	POSITION	MANUF. LOCATION
1	HAND	1RO
2	OFF	1LO
3	AUTO	2RO

**OPTION TB BLOWER MOTOR STARTER**

**OPTION TZ MANUAL SPEED POT**  
PART NO. UR5N0008  
MANUAL SPEED POT  
2.5K OHM

**OPTION PH 3% LOAD REACTOR**

**OPTION PX 3% BUS REACTOR**  
FOR BASE NO'S A002-A080, B001-B040, C1P3-C032

**OPTION PN DELTA-WYE CAPACITIVE INPUT FILTER**

**OPTION PF DRIVE INPUT FUSES**

**OPTION PY REMOTE MOUNT DYNAMIC BRAKING RESISTOR UNIT**

**OPTION TY HAND-OFF-AUTO SWITCH**  
CONTACT SEQUENCE CHART FOR S2  
X - INDICATES CONTACT CLOSED

CONTACT	POSITION	MANUF. LOCATION
1	HAND	1RO
2	OFF	1LO
3	AUTO	2RO

**OPTION TB BLOWER MOTOR STARTER**

**OPTION TZ MANUAL SPEED POT**  
PART NO. UR5N0008  
MANUAL SPEED POT  
2.5K OHM

**OPTION PH 3% LOAD REACTOR**

**OPTION PX 3% BUS REACTOR**  
FOR BASE NO'S A002-A080, B001-B040, C1P3-C032

**OPTION PN DELTA-WYE CAPACITIVE INPUT FILTER**

**OPTION PF DRIVE INPUT FUSES**

**OPTION PY REMOTE MOUNT DYNAMIC BRAKING RESISTOR UNIT**

**OPTION TY HAND-OFF-AUTO SWITCH**  
CONTACT SEQUENCE CHART FOR S2  
X - INDICATES CONTACT CLOSED

CONTACT	POSITION	MANUF. LOCATION
1	HAND	1RO
2	OFF	1LO
3	AUTO	2RO

**OPTION TB BLOWER MOTOR STARTER**

**OPTION TZ MANUAL SPEED POT**  
PART NO. UR5N0008  
MANUAL SPEED POT  
2.5K OHM

**OPTION PH 3% LOAD REACTOR**

**OPTION PX 3% BUS REACTOR**  
FOR BASE NO'S A002-A080, B001-B040, C1P3-C032

**OPTION PN DELTA-WYE CAPACITIVE INPUT FILTER**

**OPTION PF DRIVE INPUT FUSES**

**OPTION PY REMOTE MOUNT DYNAMIC BRAKING RESISTOR UNIT**

**OPTION TY HAND-OFF-AUTO SWITCH**  
CONTACT SEQUENCE CHART FOR S2  
X - INDICATES CONTACT CLOSED

CONTACT	POSITION	MANUF. LOCATION
1	HAND	1RO
2	OFF	1LO
3	AUTO	2RO

**OPTION TB BLOWER MOTOR STARTER**

**OPTION TZ MANUAL SPEED POT**  
PART NO. UR5N0008  
MANUAL SPEED POT  
2.5K OHM

**OPTION PH 3% LOAD REACTOR**

**OPTION PX 3% BUS REACTOR**  
FOR BASE NO'S A002-A080, B001-B040, C1P3-C032

**OPTION PN DELTA-WYE CAPACITIVE INPUT FILTER**

**OPTION PF DRIVE INPUT FUSES**

**OPTION PY REMOTE MOUNT DYNAMIC BRAKING RESISTOR UNIT**

**OPTION TY HAND-OFF-AUTO SWITCH**  
CONTACT SEQUENCE CHART FOR S2  
X - INDICATES CONTACT CLOSED

CONTACT	POSITION	MANUF. LOCATION
1	HAND	1RO
2	OFF	1LO
3	AUTO	2RO

**OPTION TB BLOWER MOTOR STARTER**

**OPTION TZ MANUAL SPEED POT**  
PART NO. UR5N0008  
MANUAL SPEED POT  
2.5K OHM

**OPTION PH 3% LOAD REACTOR**

**OPTION PX 3% BUS REACTOR**  
FOR BASE NO'S A002-A080, B001-B040, C1P3-C032

**OPTION PN DELTA-WYE CAPACITIVE INPUT FILTER**

**OPTION PF DRIVE INPUT FUSES**

**YASKAWA**

THIS DOCUMENT AND INFORMATION CONTAINED HEREIN IS CONFIDENTIAL AND CANNOT BE COPIED OR DISCLOSED IN WHOLE OR IN PART WITHOUT THE EXPRESS WRITTEN CONSENT OF YASKAWA AMERICA, INC.

REV.	DESCRIPTION	DATE	ECO #	DRAWN BY
06	UPDATE CUSTOMER WIRING TO BOLD LINES	10/07/15	6620	DJP
05	ADDED FM, AM, MP TERMINALS TO DRIVE	07/17/15	6422	DJP

REVISIONS	DATE	BY	REASON
D	06		

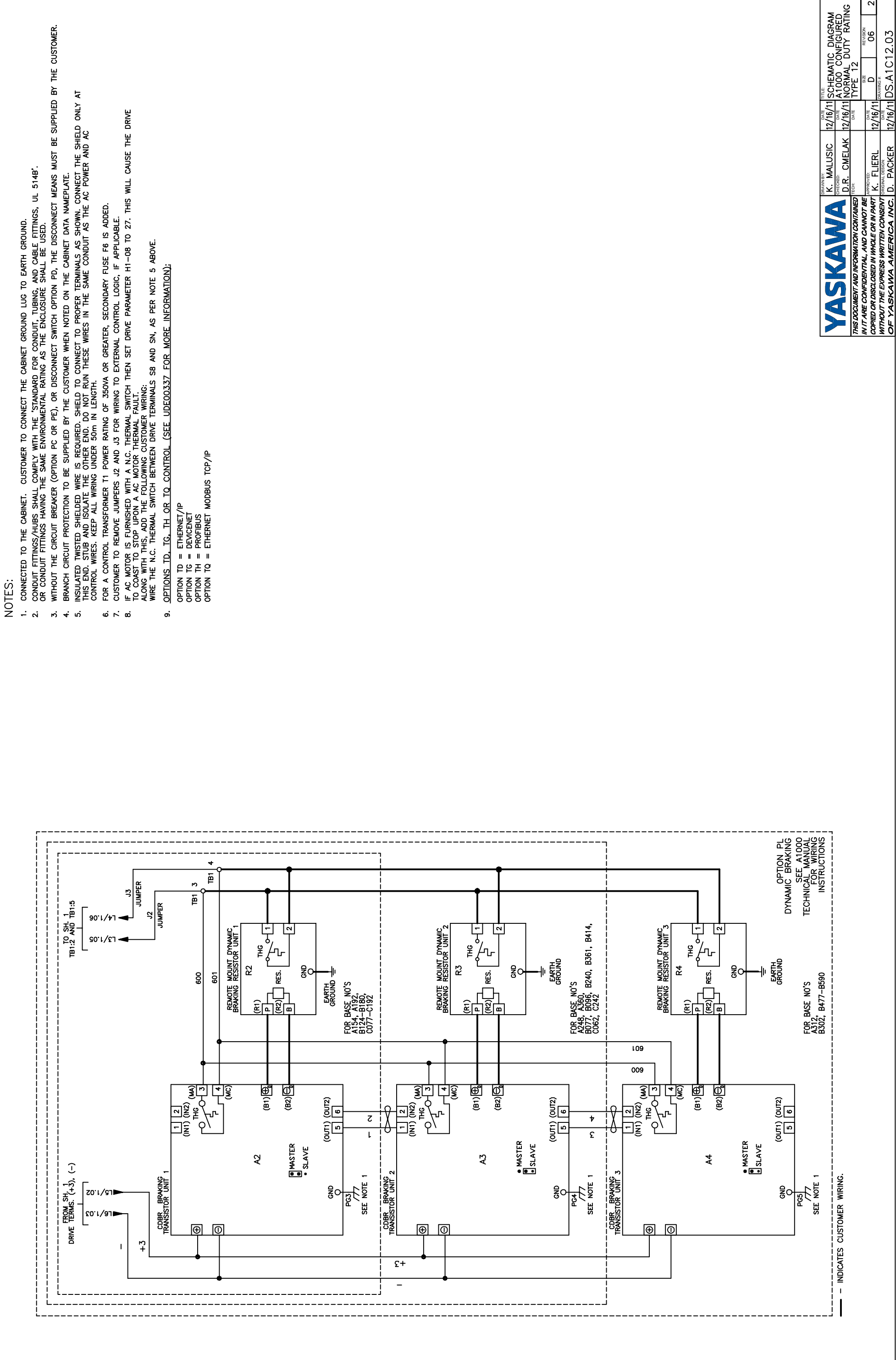
DATE: 12/16/11  
 DRAWN BY: K. MALUSIC  
 CHECKED BY: D.R. CMELAK  
 DATE: 12/16/11  
 DRAWN BY: K. FLIERL  
 DATE: 12/16/11  
 CHECKED BY: D. PACKER  
 DATE: 12/16/11

ECO # 6422  
 DRAWN BY DJP  
 DATE 07/17/15  
 DESCRIPTION UPDATE CUSTOMER WIRING TO BOLD LINES  
 TITLE SCHEMATIC DIAGRAM A1000 CONFIGURED  
 PART NO. UR5N0008  
 TYPE 12  
 SIZE 1 of 2  
 DRAWING # DS-A1C12.03

**BLOWER MOTOR**

FLA RATING	AMPS	VOLTS
3.0	2.2 - 360	240
1.5	1.6 - 477	480
3.0	515 - 660	480
1.2	1.3 - 242	600

\* - INDICATES CUSTOMER WIRING.  
 SEE SHEET 2 FOR NOTES.  
 SEE DRAWING UDE00342 FOR CUSTOMER CONNECTIONS.  
 SEE DRAWING UDE00337 FOR DRIVE PARAMETER SETTINGS.



- NOTES:
1. CONNECTED TO THE CABINET. CUSTOMER TO CONNECT THE CABINET GROUND LUG TO EARTH GROUND.
  2. CONDUIT FITTINGS/HUBS SHALL COMPLY WITH THE STANDARD FOR CONDUIT, TUBING, AND CABLE FITTINGS, UL 514B' OR CONDUIT FITTINGS HAVING THE SAME ENVIRONMENTAL RATING AS THE ENCLOSURE SHALL BE USED.
  3. WITHOUT THE CIRCUIT BREAKER (OPTION PC OR PE), OR DISCONNECT SWITCH (OPTION PD), THE DISCONNECT MEANS MUST BE SUPPLIED BY THE CUSTOMER.
  4. BRANCH CIRCUIT PROTECTION TO BE SUPPLIED BY THE CUSTOMER WHEN NOTED ON THE CABINET DATA NAMEPLATE.
  5. INSULATED TWISTED SHIELDED WIRE IS REQUIRED. SHIELD TO CONNECT TO PROPER TERMINALS AS SHOWN. CONNECT THE SHIELD ONLY AT THIS END. STUB AND ISOLATE THE OTHER END. DO NOT RUN THESE WIRES IN THE SAME CONDUIT AS THE AC POWER AND AC CONTROL WIRES. KEEP ALL WIRING UNDER 50m IN LENGTH.
  6. FOR A CONTROL TRANSFORMER T1 POWER RATING OF 350VA OR GREATER, SECONDARY FUSE F6 IS ADDED.
  7. CUSTOMER TO REMOVE JUMPERS J2 AND J3 FOR WIRING TO EXTERNAL CONTROL LOGIC, IF APPLICABLE.
  8. IF AC MOTOR IS FURNISHED WITH A N.C. THERMAL SWITCH THEN SET DRIVE PARAMETER H1-08 TO 27. THIS WILL CAUSE THE DRIVE TO COAST TO STOP UPON A AC MOTOR THERMAL FAULT. ALONG WITH THIS, ADD THE FOLLOWING CUSTOMER WIRING: WIRE THE N.C. THERMAL SWITCH BETWEEN DRIVE TERMINALS S8 AND SN, AS PER NOTE 5 ABOVE.
  9. OPTIONS ID, IG, TH OR IQ CONTROL (SEE UDE00337 FOR MORE INFORMATION):  
 OPTION TD = ETHERNET/IP  
 OPTION TG = DEVICENET  
 OPTION TH = PROFIBUS  
 OPTION TQ = ETHERNET MODBUS TCP/IP

**YASKAWA**  
 THIS DOCUMENT AND INFORMATION CONTAINED IN IT ARE CONFIDENTIAL AND CANNOT BE COPIED OR DISCLOSED IN WHOLE OR IN PART WITHOUT THE EXPRESS WRITTEN CONSENT OF YASKAWA AMERICA, INC.

DRAWN BY	K. MALUSIC	DATE	12/16/11	TITLE	SCHEMATIC DIAGRAM
DESIGNED	D.R. CMELAK	DATE	12/16/11	NO.	A1000 CONFIGURED
TECH		DATE		TYPE	NORMAL DUTY RATING
REVISED		DATE		SIZE	TYPE 12
BY	K. FLIERL	DATE	12/16/11	DRAWING #	
BY	D. PACKER	DATE	12/16/11	REVISION	D 06
				PAGE	2 of 2

DS-A1C12.03