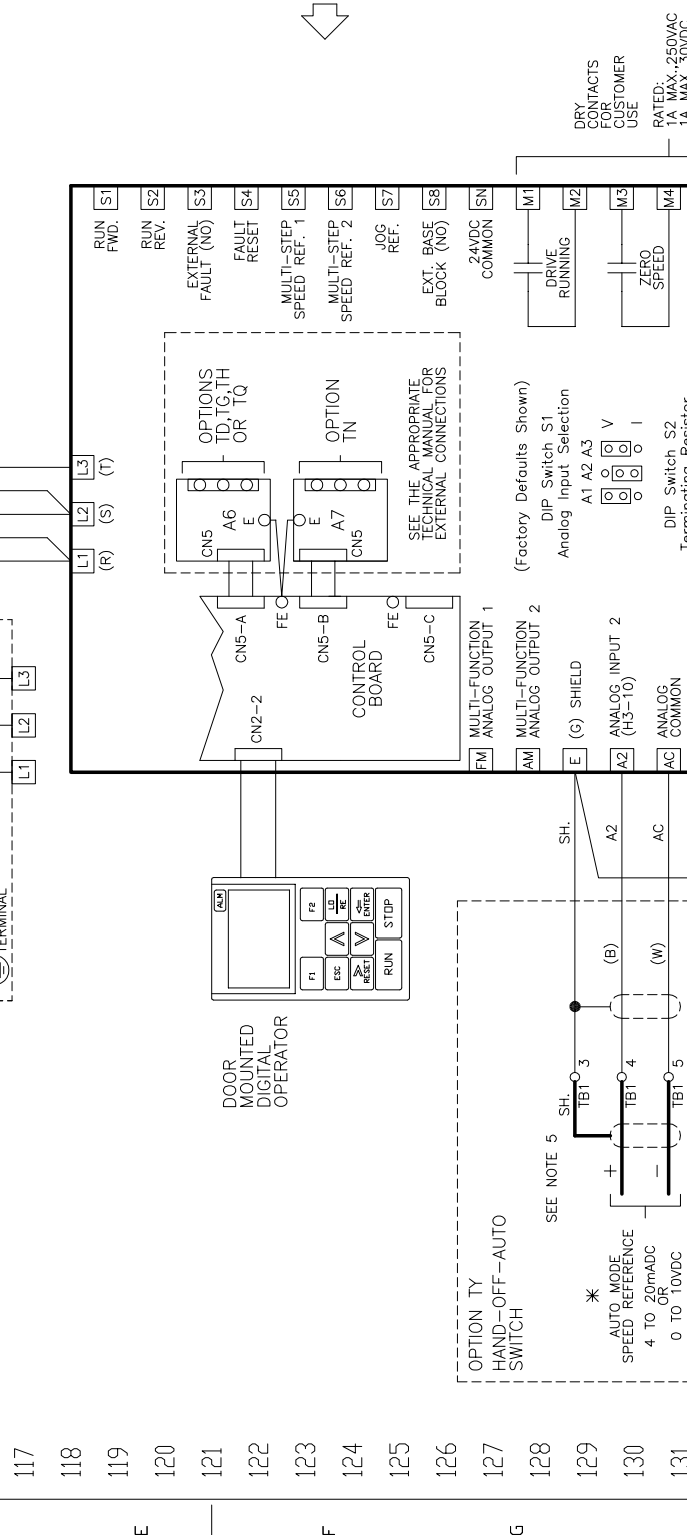
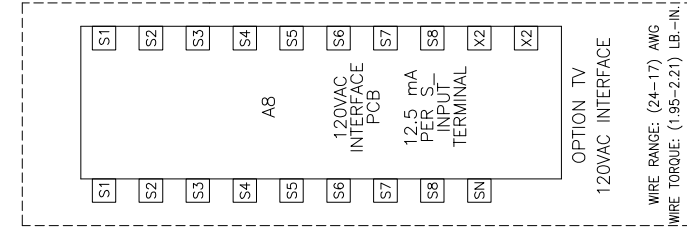
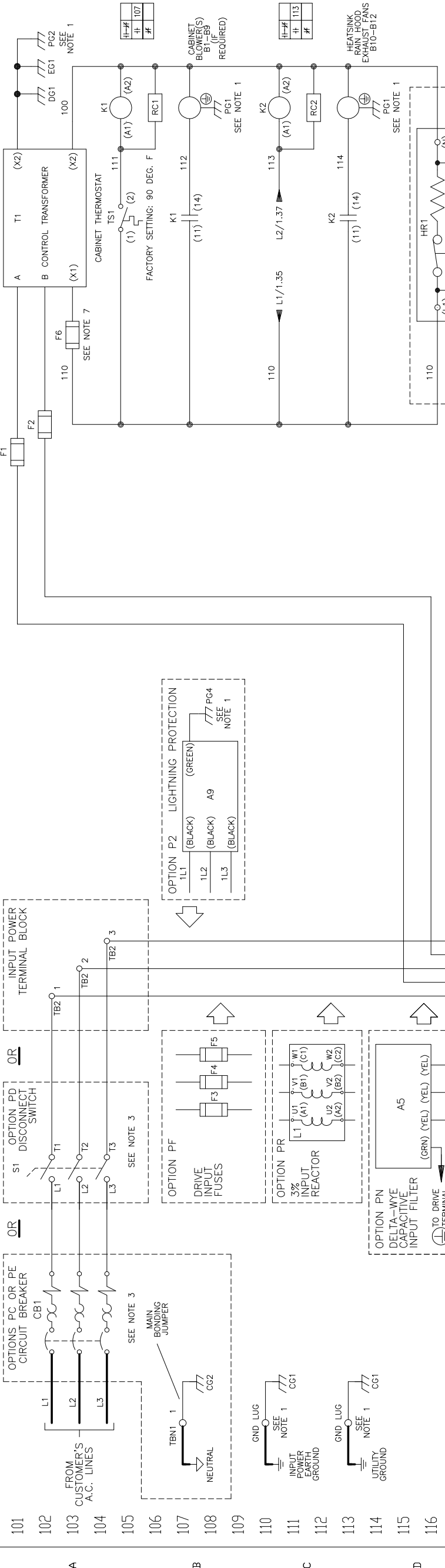


CONTROL TRANSFORMER PRIMARY CONNECTIONS		
INPUT VOLTS	TERMINALS A B	JUMPER LOCATION
230/240	(H1) (H4)	(H1) TO (H3)
460/480	(H1) (H4)	(H2) TO (H4)
600	(H1) (H2)	NONE



NOTES:

- CONNECTED TO THE CABINET. CUSTOMER TO CONNECT THE CABINET GROUND LUGS TO EARTH GROUND AND UTILITY GROUND.
- CONDUIT FITTINGS/HUBS SHALL COMPLY WITH THE STANDARD FOR CONDUIT, TUBING, AND CABLE FITTINGS, UL 514B OR CONDUIT FITTINGS HAVING THE SAME ENVIRONMENTAL RATING AS ENCLOSURE SHALL BE USED.
- WITHOUT THE CIRCUIT BREAKER (OPTION PC OR PE), OR DISCONNECT SWITCH OPTION PD, THE DISCONNECT MEANS MUST BE SUPPLIED BY THE CUSTOMER.
- BRANCH CIRCUIT PROTECTION TO BE SUPPLIED BY THE CUSTOMER WHEN NOTED ON THE CABINET DATA NAMEPLATE.
- INSULATED TWISTED SHIELDED WIRE IS REQUIRED. SHIELD TO CONNECT TO PROPER TERMINALS AS SHOWN. CONNECT THE SHIELD ONLY AT THIS END. STUB AND ISOLATE THE OTHER END. DO NOT RUN THESE WIRES IN THE SAME CONDUIT AS THE AC POWER AND AC CONTROL WIRES. KEEP ALL WIRING UNDER 50mm IN LENGTH.
- CUSTOMER TO ADJUST THE THERMOSTAT ON THE SPACE HEATER HR1 FOR THE MINIMUM DESIRED TEMPERATURE INSIDE THE DRIVE CABINET. THIS SET TEMPERATURE IS NORMALLY SELECTED TO BE SLIGHTLY HIGHER THAN THE MINIMUM AMBIENT TEMPERATURE OF THE AIR SURROUNDING THE CABINET, AND IS THE TEMPERATURE AT WHICH THE SPACE HEATER HR1 WILL SHUT OFF.
- FOR A CONTROL TRANSFORMER T1 POWER RATING OF 350VA OR GREATER, SECONDARY FUSE F6 IS ADDED.
- IF AC MOTOR IS FURNISHED WITH A N.C. THERMAL SWITCH THEN SET DRIVE PARAMETER H1-08 TO 27. THIS WILL CAUSE THE DRIVE TO COAST TO STOP UPON AN AC MOTOR THERMAL FAULT. ALONG WITH THIS, ADD THE FOLLOWING CUSTOMER WIRING: WIRE THE N.C. THERMAL SWITCH BETWEEN TERMINAL S8 OF THE 120VAC INTERFACE CARD AND ONE SIDE OF 120VAC SOURCE.
- CUSTOMER MUST PROVIDE PROPER SHORT CIRCUIT PROTECTION AND MEANS OF DISCONNECT.
- OPTIONS TD, TG, TH OR TQ, CONTROL (SEE UDE003689 FOR MORE INFORMATION)

CONTACT SEQUENCE CHART FOR S2
X - INDICATES CONTACT CLOSED

CONTACT	POSITION	MANUF. LOCATION /TYPE
1	HAND OFF	AUTO
2	X	1R0
3	X	1L0
	X	2R0

* SCHEMATIC SHOWS THIS POSITION.

CONTACT SEQUENCE CHART FOR S2
X - INDICATES CONTACT CLOSED

CONTACT	POSITION	MANUF. LOCATION /TYPE
1	HAND OFF	AUTO
2	X	1R0
	X	1L0
3	X	2L0

* SCHEMATIC SHOWS THIS POSITION.

* - INDICATES COMPONENTS NOT SUPPLIED BY YASKAWA.
- - INDICATES CUSTOMER WIRING.

SEE DRAWING UDE003689 FOR CUSTOMER CONNECTION TABLES.
SEE DRAWING UDE00389 FOR DRIVE PARAMETER SETTINGS.



REV.	CHG.	DESCRIPTION	ECO #	DATE	INITIAL RELEASE
01	L	WIRE NO.'S AND WIRING TO SPEED POT	3907	1/23/13	KM
00				9/4/12	

REV.	CHG.	DESCRIPTION	ECO #	DATE	INITIAL RELEASE
01	L	WIRE NO.'S AND WIRING TO SPEED POT	3907	1/23/13	KM
00				9/4/12	

REV.	CHG.	DESCRIPTION	ECO #	DATE	INITIAL RELEASE
01	L	WIRE NO.'S AND WIRING TO SPEED POT	3907	1/23/13	KM
00				9/4/12	

THIS DOCUMENT AND INFORMATION CONTAINED HEREIN IS CONFIDENTIAL AND CANNOT BE REPRODUCED OR DISCLOSED IN WHOLE OR IN PART WITHOUT THE EXPRESS WRITTEN CONSENT OF YASKAWA AMERICA, INC.

SCHEMATIC DIAGRAM P1000 CONFIGURED TYPE 3R

DATE 9/4/12 DATE 9/4/12 DATE 9/4/12

DESIGNED BY K. MALUSIC CHECKED BY D.R. CMELEK

APPROVED BY K. FLIERL

SIZE D 01 1 of 1

DRAWING NO. DS.P1C3R.08