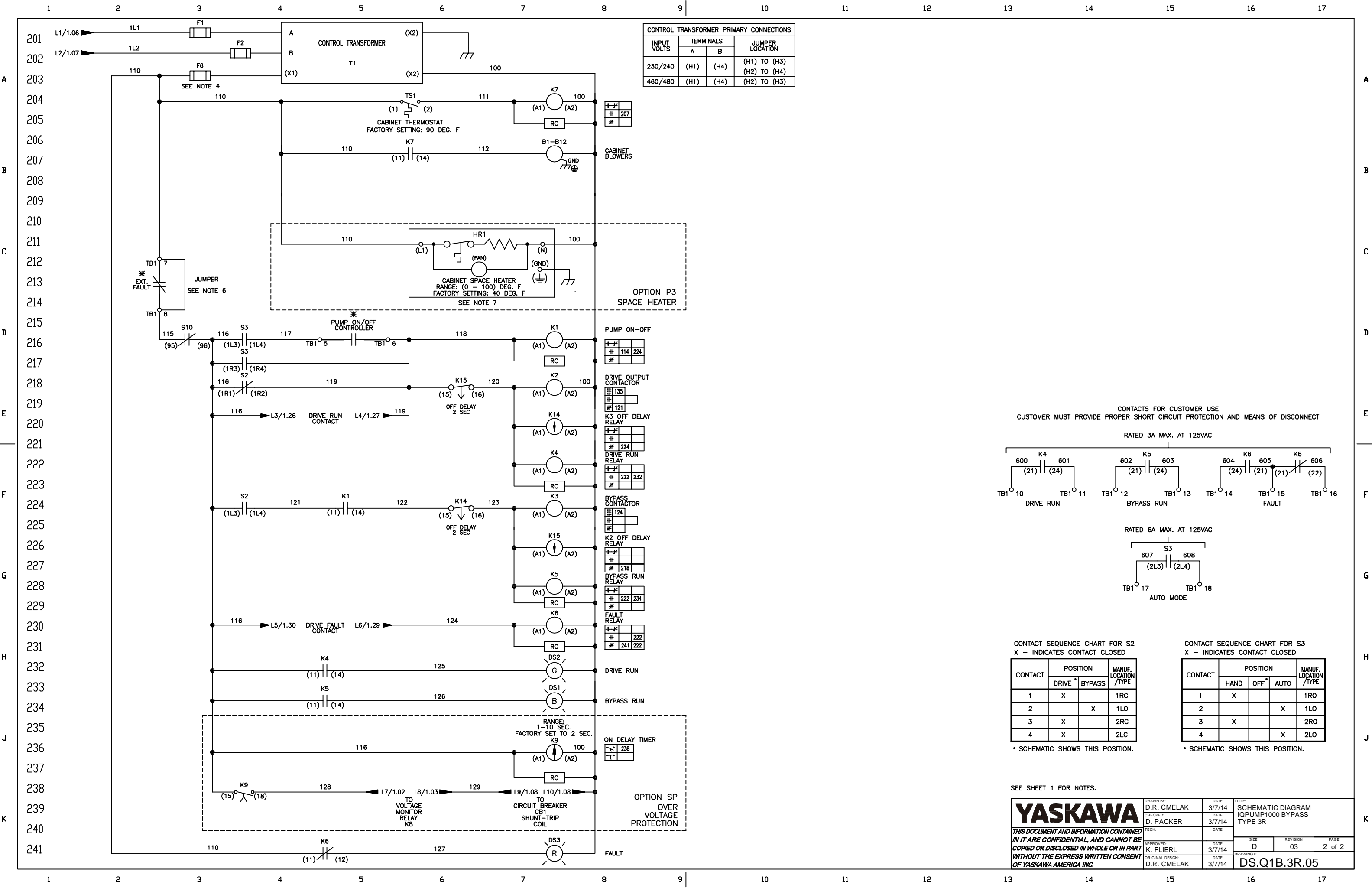


\* - INDICATES COMPONENTS NOT SUPPLIED BY YASKAWA.  
 --- INDICATES CUSTOMER WIRING.  
 ⊞ - CONNECTED TO THE CABINET OR PANEL.

- NOTES:
- FACTORY CONNECTION POINT ON DRIVE A1.
  - 1. CONNECTED TO THE CABINET. CUSTOMER TO CONNECT THE CABINET GROUND LUGS TO EARTH GROUND AND UTILITY GROUND.
  - 2. CONDUIT FITTINGS/HUBS SHALL COMPLY WITH THE 'STANDARD FOR CONDUIT, TUBING AND CABLE FITTINGS, UL514B', OR CONDUIT FITTINGS HAVING THE SAME ENVIRONMENTAL RATING AS THE ENCLOSURE SHALL BE USED.
  - 3. INSULATED TWISTED SHIELDED WIRE IS REQUIRED. SHIELD TO CONNECT TO PROPER TERMINALS AS SHOWN. CONNECT THE SHIELD ONLY AT THIS END. STUB AND ISOLATE THE OTHER END. DO NOT RUN THESE WIRES IN THE THE SAME CONDUIT AS THE AC POWER AND AC CONTROL WIRES. KEEP ALL WIRING UNDER 50 METERS IN LENGTH.
  - 4. FOR A CONTROL TRANSFORMER T1 POWER RATING OF 350VA OR GREATER, SECONDARY FUSE F6 IS ADDED.
  - 5. THE MOTOR OVERLOAD RELAY IS FACTORY SET FOR MANUAL RESET. CUSTOMER TO ADJUST THE MOTOR OVERLOAD RELAY TRIP SETTING FOR THE ACTUAL AC MOTOR'S FULL LOAD AMPS.
  - 6. REMOVE THE JUMPER AND INSERT A NORMALLY CLOSED EXTERNAL FAULT CONTACT, IF REQUIRED.
  - 7. CUSTOMER TO ADJUST THE THERMOSTAT ON THE SPACE HEATER HR1 FOR THE MINIMUM DESIRED TEMPERATURE INSIDE THE DRIVE CABINET. THIS SET TEMPERATURE IS NORMALLY SELECTED TO BE SLIGHTLY HIGHER THAN THE MINIMUM AMBIENT TEMPERATURE OF THE AIR SURROUNDING THE CABINET, AND IS THE TEMPERATURE AT WHICH THE SPACE HEATER HR1 WILL SHUT OFF.

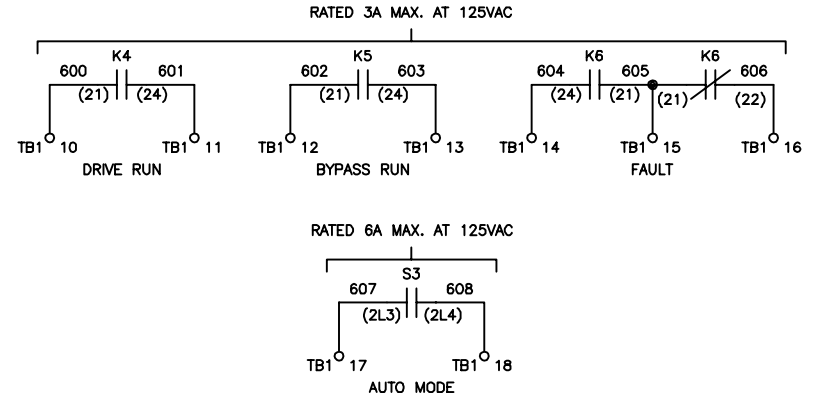
REV.	DESCRIPTION	ECO #	DRAWN BY	DATE
02	CHG. FROM "F" TO GIGA CONTACTORS AND OVERLOADS	15179	KM	04/20/26
03	ADDED OPTION P9	6264	R. ROH	03/20/18
01	ADDED OPTIONS P7 AND SP	6650	DRC	10/31/15

<b>YASKAWA</b>		DRAWN BY: D.R. CMELAK	DATE: 3/7/14	TITLE: SCHEMATIC DIAGRAM IQPUMP1000 BYPASS TYPE 3R
		CHECKED: D. PACKER	DATE: 3/7/14	
		APPROVED: K. FLIERL	DATE: 3/7/14	
		ORIGINAL DESIGN: D.R. CMELAK	DATE: 3/7/14	
SIZE: D	REVISION: 03	PAGE: 1 of 2		
DRAWING #: DS.Q1B.3R.05				



INPUT VOLTS	TERMINALS		JUMPER LOCATION
	A	B	
230/240	(H1)	(H4)	(H1) TO (H3) (H2) TO (H4)
460/480	(H1)	(H4)	(H2) TO (H3)

CONTACTS FOR CUSTOMER USE  
CUSTOMER MUST PROVIDE PROPER SHORT CIRCUIT PROTECTION AND MEANS OF DISCONNECT



CONTACT SEQUENCE CHART FOR S2  
X - INDICATES CONTACT CLOSED

CONTACT	POSITION		MANUF. LOCATION /TYPE
	DRIVE	BYPASS	
1	X		1RC
2		X	1LO
3	X		2RC
4	X		2LC

\* SCHEMATIC SHOWS THIS POSITION.

CONTACT SEQUENCE CHART FOR S3  
X - INDICATES CONTACT CLOSED

CONTACT	POSITION			MANUF. LOCATION /TYPE
	HAND	OFF	AUTO	
1	X			1RO
2			X	1LO
3	X			2RO
4			X	2LO

\* SCHEMATIC SHOWS THIS POSITION.

SEE SHEET 1 FOR NOTES.

<b>YASKAWA</b>	DRAWN BY: D.R. CMELAK	DATE: 3/7/14	TITLE: SCHEMATIC DIAGRAM IQPUMP1000 BYPASS TYPE 3R
	CHECKED BY: D. PACKER	DATE: 3/7/14	
APPROVED BY: K. FLIERL		DATE: 3/7/14	SIZE: D REVISION: 03 PAGE: 2 of 2
ORIGINAL DESIGNER: D.R. CMELAK		DATE: 3/7/14	DRAWING #: DS.Q1B.3R.05