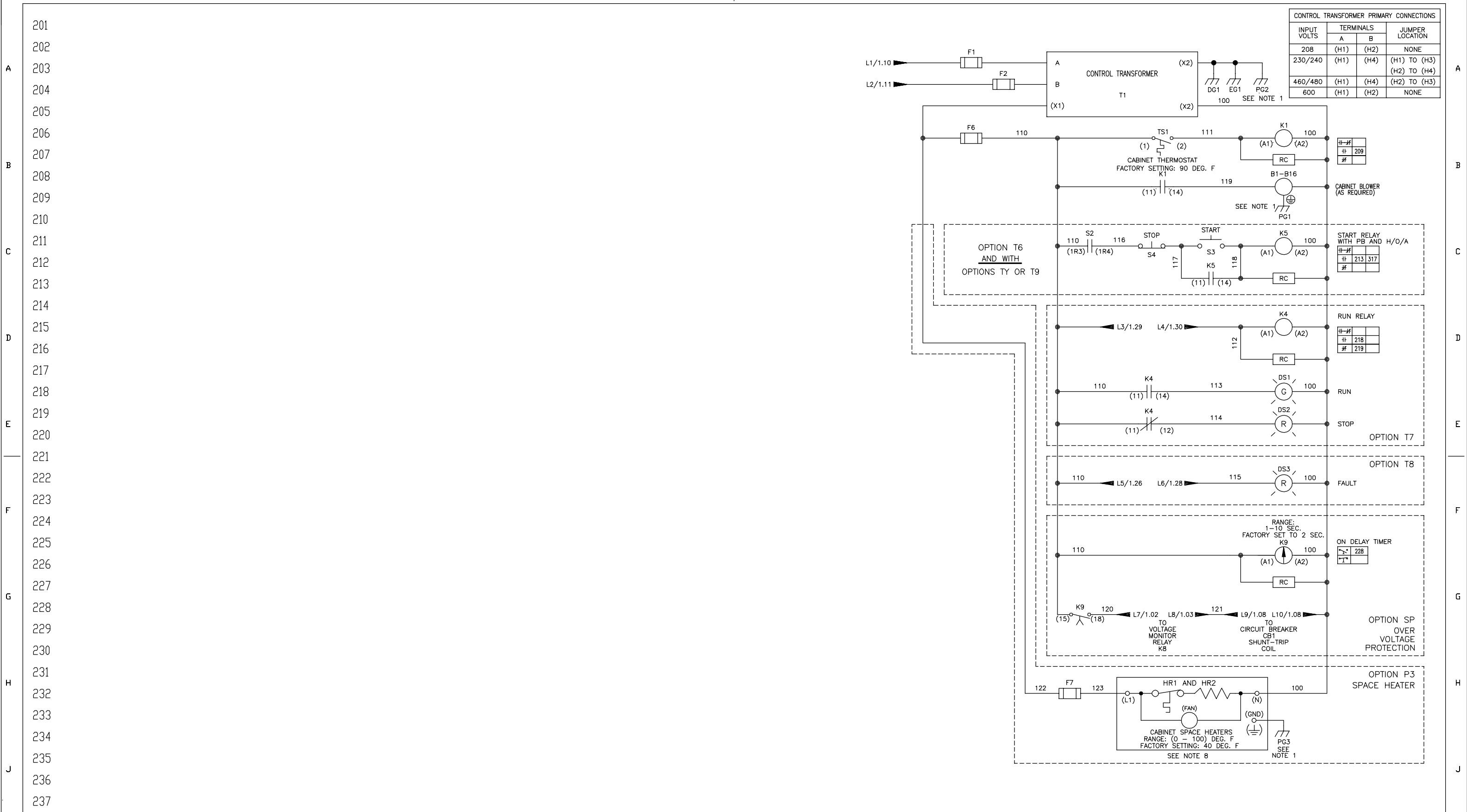


- NOTES:
- CONNECTED TO THE CABINET. CUSTOMER TO CONNECT THE CABINET GROUND LUGS TO EARTH GROUND AND UTILITY GROUND.
 - CONDUIT FITTINGS/HUBS SHALL COMPLY WITH THE 'STANDARD FOR CONDUIT, TUBING, AND CABLE FITTINGS, UL 514B', OR CONDUIT FITTINGS HAVING THE SAME ENVIRONMENTAL RATING AS THE ENCLOSURE SHALL BE USED.
 - WITHOUT THE CIRCUIT BREAKER (OPTION PC OR PE), OR DISCONNECT SWITCH OPTION PD, THE DISCONNECT MEANS MUST BE SUPPLIED BY THE CUSTOMER.
 - GROUND-FAULT PROTECTION IS PROVIDED FOR THIS ENTIRE CIRCUIT WHEN A CIRCUIT BREAKER (OPTION PC OR PE) IS PROVIDED BY YASKAWA.
 - IF THIS CABINET IS WIRED TO A 3 PHASE, 4 WIRE WYE INPUT POWER TRANSFORMER, THEN ORDER NEUTRAL CURRENT TRANSFORMER:
 - FOR A 1000 AMP OR 1200 AMP CIRCUIT BREAKER (OPTION PC OR PE): PART NO. UPT000302.
 - FOR A 1600 AMP CIRCUIT BREAKER (OPTION PC OR PE): PART NO. UPT000303.
 - BRANCH CIRCUIT PROTECTION TO BE SUPPLIED BY THE CUSTOMER WHEN NOTED ON THE CABINET DATA NAMEPLATE.
 - INSULATED TWISTED SHIELDED WIRE IS REQUIRED. SHIELD TO CONNECT TO PROPER TERMINALS AS SHOWN. CONNECT THE SHIELD ONLY AT THIS END. STUB AND ISOLATE THE OTHER END. DO NOT RUN THESE WIRES IN THE SAME CONDUIT AS THE AC POWER AND AC CONTROL WIRES. KEEP ALL WIRING UNDER 50m IN LENGTH.
 - CUSTOMER TO ADJUST THE THERMOSTAT ON THE SPACE HEATERS HR1 AND HR2 FOR THE MINIMUM DESIRED TEMPERATURE INSIDE THE DRIVE CABINET. THIS SET TEMPERATURE IS NORMALLY SELECTED TO BE SLIGHTLY HIGHER THAN THE MINIMUM AMBIENT TEMPERATURE OF THE AIR SURROUNDING THE CABINET, AND IS THE TEMPERATURE AT WHICH THE SPACE HEATERS HR1 AND HR2 WILL SHUT OFF.
 - IF AC MOTOR IS FURNISHED WITH A N.C. THERMAL SWITCH THEN SET DRIVE PARAMETER H1-08 TO 27. THIS WILL CAUSE THE DRIVE TO COAST TO STOP UPON AN AC MOTOR THERMAL FAULT. ALONG WITH THIS, ADD THE FOLLOWING CUSTOMER WIRING: WIRE THE N.C. THERMAL SWITCH BETWEEN TERMINAL S8 OF THE 120VAC INTERFACE CARD AND ONE SIDE OF THE 120VAC SOURCE.
 - OPTIONS TD, TG, TH OR TQ CONTROL (SEE UDE00392 FOR MORE INFORMATION)
 - CUSTOMER TO REPLACE THE JUMPER WITH NORMALLY CLOSED SAFETY INTERLOCKS, IF APPLICABLE.

* - INDICATES COMPONENTS NOT SUPPLIED BY YASKAWA.
 - INDICATES CUSTOMER WIRING.
 SEE DRAWING UDE00411 FOR CUSTOMER CONNECTION TABLES.
 SEE DRAWING UDE00392 FOR DRIVE PARAMETER SETTINGS.

REV.	DESCRIPTION	ECO #	DRAWN BY	DATE
0B	CHANGED L4 TERMINAL DSNTRS, ADD P9 OPTION	8261	R. ROH	11/20/17
07	DELETED WIRE NO'S 1L1 AND 1L2 TO F1 AND F2	7812	NSL	4/10/17

YASKAWA	DRAWN BY:	D.R. CMELAK	DATE:	11/28/12	TITLE:	SCHMATIC DIAGRAM
	CHECKED:	D. PACKER	DATE:	11/28/12		IQPUMP1000 CONFIGURED
	TECH:		DATE:			HIGH HORSEPOWER
	APPROVED:	K. FLJERL	DATE:	11/28/12	SIZE:	D
	ORIGINAL DESIGN:	D.R. CMELAK	DATE:	11/28/12	REVISION:	08
					PAGE:	1 of 3
					DRAWING #:	DS.Q1C3R.10



201
202
203
204
205
206
207
208
209
210
211
212
213
214
215
216
217
218
219
220
221
222
223
224
225
226
227
228
229
230
231
232
233
234
235
236
237
238
239
240
241

A
B
C
D
E
F
G
H
J
K

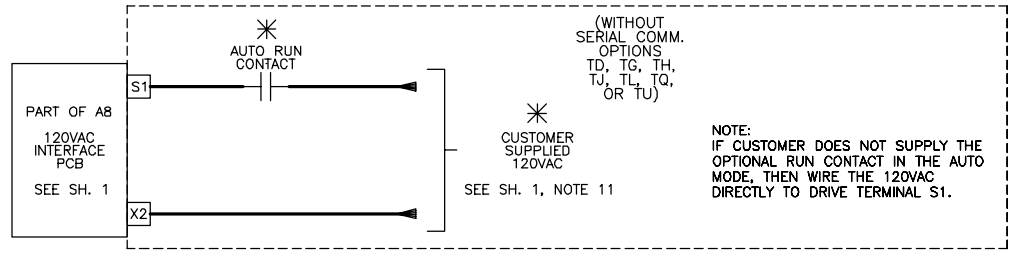
SEE SHEET 1 FOR NOTES.

YASKAWA	DRAWN BY: D.R. CMELAK	DATE: 11/28/12	TITLE: SCHEMATIC DIAGRAM
	CHECKED: D. PACKER	DATE: 11/28/12	IQPUMP1000 CONFIGURED HIGH HORSEPOWER TYPE 3R
APPROVED: K. FLIERL		DATE: 11/28/12	SIZE: D
ORIGINAL DESIGN: D.R. CMELAK		DATE: 11/28/12	REVISION: 08
DRAWING #: DS.Q1C3R.10			PAGE: 2 of 3

RUN/STOP CONTROL WITH OPTION TV (FROM SHEET 1)

301
302
303
304
305
306
307
308
309
310
311
312
313
314
315
316
317
318
319
320
321
322
323
324
325
326
327
328
329
330
331
332
333
334
335
336
337
338
339
340
341

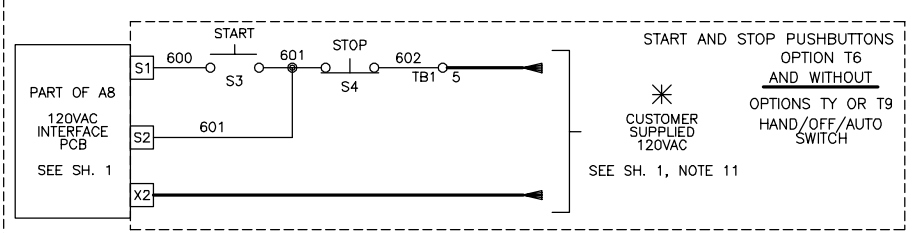
A
B
C
D
E
F
G
H
J
K



(WITHOUT SERIAL COMM. OPTIONS TD, TG, TH, TJ, TL, TQ, OR TU)

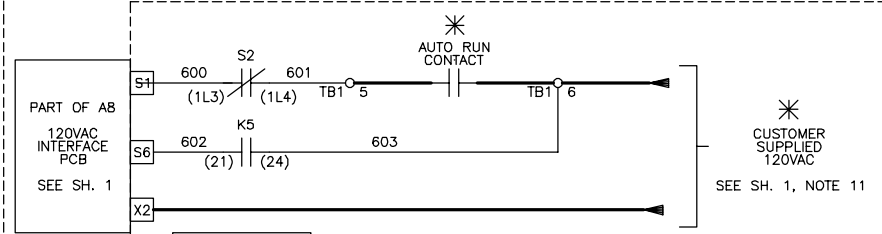
* CUSTOMER SUPPLIED 120VAC
NOTE: IF CUSTOMER DOES NOT SUPPLY THE OPTIONAL RUN CONTACT IN THE AUTO MODE, THEN WIRE THE 120VAC DIRECTLY TO DRIVE TERMINAL S1.

OR



START AND STOP PUSHBUTTONS OPTION T6
AND WITHOUT OPTIONS TY OR T9
HAND/OFF/AUTO SWITCH
* CUSTOMER SUPPLIED 120VAC
SEE SH. 1, NOTE 11

OR



CONTACT SEQUENCE CHART FOR S2
X - INDICATES CONTACT CLOSED

CONTACT	POSITION			MANUF. LOCATION /TYPE
	HAND	OFF	AUTO*	
1	X			1RO
2			X	1LO

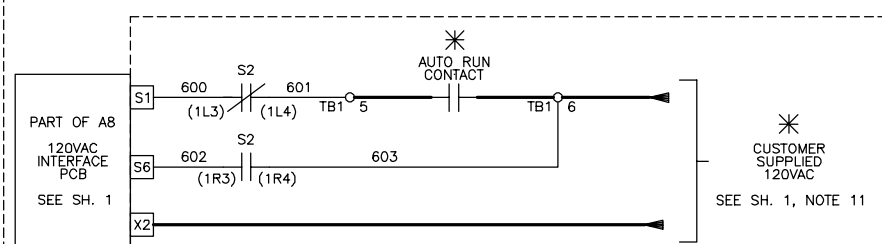
* SCHEMATIC SHOWS THIS POSITION.

OPTION T6
START AND STOP PUSHBUTTONS
AND WITH
OPTION TY, OR PART OF OPTION T9
HAND/OFF/AUTO SWITCH

(ALSO SEE SH. 1 FOR MORE WIRING.)

NOTE: IF CUSTOMER DOES NOT SUPPLY THE OPTIONAL RUN CONTACT IN THE AUTO MODE, THEN ADD A JUMPER BETWEEN TERMINAL BLOCK TB1 TERMINALS 5 AND 6.

OR



CONTACT SEQUENCE CHART FOR S2
X - INDICATES CONTACT CLOSED

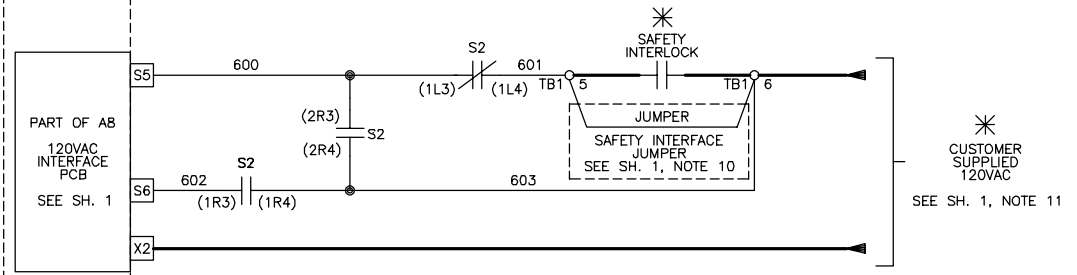
CONTACT	POSITION			MANUF. LOCATION /TYPE
	HAND	OFF	AUTO*	
1	X			1RO
2			X	1LO

* SCHEMATIC SHOWS THIS POSITION.

OPTION TY, OR PART OF OPTION T9
HAND/OFF/AUTO SWITCH
AND WITHOUT
OPTIONS TD, TG, TH, TJ, TL, TQ OR TU
SERIAL COMMUNICATIONS

NOTE: IF CUSTOMER DOES NOT SUPPLY THE OPTIONAL RUN CONTACT IN THE AUTO MODE, THEN ADD A JUMPER BETWEEN TERMINAL BLOCK TB1 TERMINALS 5 AND 6.

OR

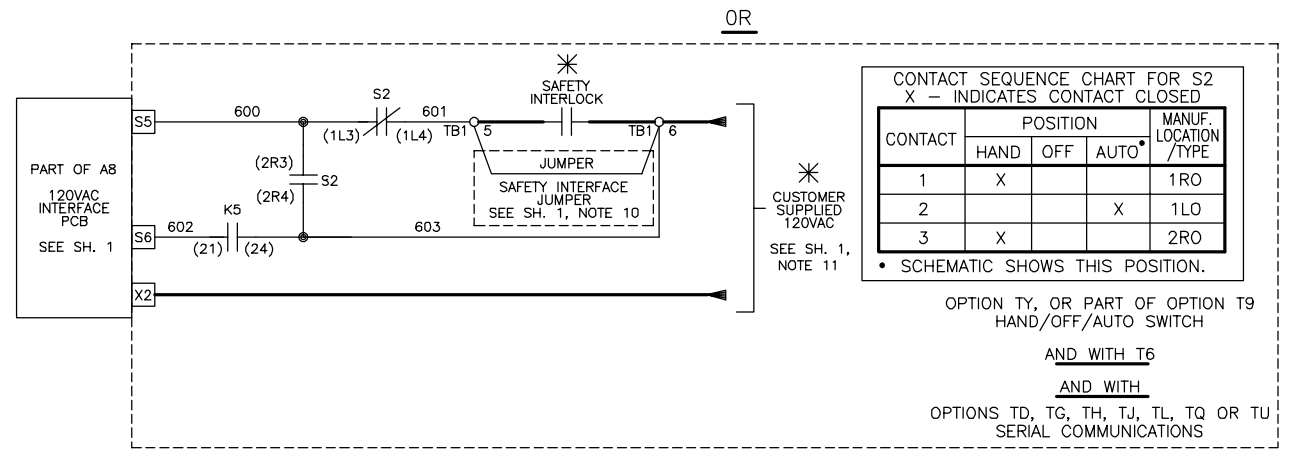


CONTACT SEQUENCE CHART FOR S2
X - INDICATES CONTACT CLOSED

CONTACT	POSITION			MANUF. LOCATION /TYPE
	HAND	OFF	AUTO*	
1	X			1RO
2			X	1LO
3	X			2RO

* SCHEMATIC SHOWS THIS POSITION.

OPTION TY, OR PART OF OPTION T9
HAND/OFF/AUTO SWITCH
AND WITH
OPTIONS TD, TG, TH, TJ, TL, TQ OR TU
SERIAL COMMUNICATIONS



CONTACT SEQUENCE CHART FOR S2
X - INDICATES CONTACT CLOSED

CONTACT	POSITION			MANUF. LOCATION /TYPE
	HAND	OFF	AUTO*	
1	X			1RO
2			X	1LO
3	X			2RO

* SCHEMATIC SHOWS THIS POSITION.

OPTION TY, OR PART OF OPTION T9
HAND/OFF/AUTO SWITCH
AND WITH T6
AND WITH
OPTIONS TD, TG, TH, TJ, TL, TQ OR TU
SERIAL COMMUNICATIONS

FOR ALL WIRE CONNECTION TO 120VAC INTERFACE PCB A8:
WIRE RANGE: (24 - 17) AWG.
WIRE TORQUE: (1.95 - 2.21) LB.-IN

SEE SHEET 1 FOR NOTES.

YASKAWA

THIS DOCUMENT AND INFORMATION CONTAINED IN IT ARE CONFIDENTIAL, AND CANNOT BE COPIED OR DISCLOSED IN WHOLE OR IN PART WITHOUT THE EXPRESS WRITTEN CONSENT OF YASKAWA AMERICA INC.

DRAWN BY: D.R. CMELAK	DATE 11/28/12	TITLE SCHEMATIC DIAGRAM IQPUMP1000 CONFIGURED HIGH HORSEPOWER TYPE 3R
CHECKED BY: D. PACKER	DATE 11/28/12	SIZE D
APPROVED BY: K. FLIERL	DATE 11/28/12	REVISION 08
ORIGINAL DESIGNER: D.R. CMELAK	DATE 11/28/12	PAGE 3 of 3

DRAWING #
DS.Q1C3R.10