

TABLE 1 FILTER WIRING CHART

FILTER MANUFACTURER	INPUT TERMINALS	OUTPUT TERMINALS	MFR OPTION CODE(S)	x.xx	y.yy
ARTECHE	1=U, 2=V, 3=W	4=X, 5=Y, 6=Z	BY	3.07	3.07

WIRES x.xx & y.yy ONLY REQUIRED IF MFR OPTION CODE NOTED ABOVE IS ORDERED BY THE CUSTOMER.

- NOTES:
- CONNECTED TO THE CABINET. CUSTOMER TO CONNECT THE CABINET GROUND LUGS TO EARTH GROUND AND UTILITY GROUND.
 - CONDUIT FITTINGS/HUBS SHALL COMPLY WITH THE STANDARD FOR CONDUIT, TUBING, AND CABLE FITTINGS, UL 514B[®]. OR CONDUIT FITTINGS HAVING THE SAME ENVIRONMENTAL RATING AS THE ENCLOSURE SHALL BE USED.
 - LIGHTNING PROTECTION OPTION P2 IS TO BE INSTALLED ON THE VOLTAGE TAP OFFS AT THE BREAKER IS REQUIRED.
 - BRANCH CIRCUIT PROTECTION TO BE SUPPLIED BY THE CUSTOMER WHEN NOTED ON THE CABINET DATA NAMEPLATE.
 - INSULATED TWISTED SHIELDED WIRE IS REQUIRED. SHIELD TO CONNECT TO PROPER TERMINALS AS SHOWN. CONNECT THE SHIELD ONLY AT THIS END. STUB AND ISOLATE THE OTHER END. DO NOT RUN THESE WIRES IN THE SAME CONDUIT AS THE AC POWER AND AC CONTROL WIRES. KEEP ALL WIRING UNDER 50m IN LENGTH.
 - CUSTOMER TO ADJUST THE THERMOSTAT ON THE SPACE HEATER HRT FOR THE MINIMUM DESIRED TEMPERATURE INSIDE THE DRIVE CABINET. THIS SET TEMPERATURE IS NORMALLY SELECTED TO BE SLIGHTLY HIGHER THAN THE MINIMUM AMBIENT TEMPERATURE OF THE AIR SURROUNDING THE CABINET, AND IS THE TEMPERATURE AT WHICH THE SPACE HEATER HRT WILL SHUT OFF.
 - FOR A CONTROL TRANSFORMER T1 POWER RATING OF 350VA OR GREATER, SECONDARY FUSE F6 IS ADDED.
 - IF AC MOTOR IS FURNISHED WITH A N.C. THERMAL SWITCH THEN SET DRIVE PARAMETER H1-08 TO 27. THIS WILL CAUSE THE DRIVE TO COAST TO STOP UPON AN AC MOTOR THERMAL FAULT.
 - ALONG WITH THIS, ADD THE FOLLOWING CUSTOMER WIRING: WIRE THE N.C. THERMAL SWITCH BETWEEN TERMINAL S8 OF THE 120VAC INTERFACE CARD AND ONE SIDE OF THE 120VAC SOURCE.
 - OPTIONS ID, IG, TH, TJ, TL, TQ OR TU CONTROL (SEE UDE00436 FOR MORE INFORMATION)
 - CUSTOMER TO REPLACE THE JUMPER WITH NORMALLY CLOSED SAFETY INTERLOCKS, IF APPLICABLE.
 - CUSTOMER MUST PROVIDE PROPER SHORT CIRCUIT PROTECTION AND MEANS OF DISCONNECT.

REVISIONS

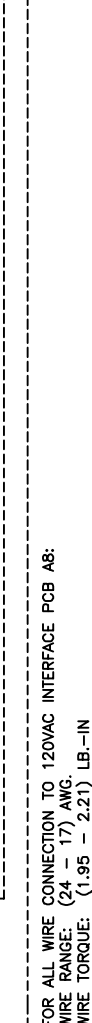
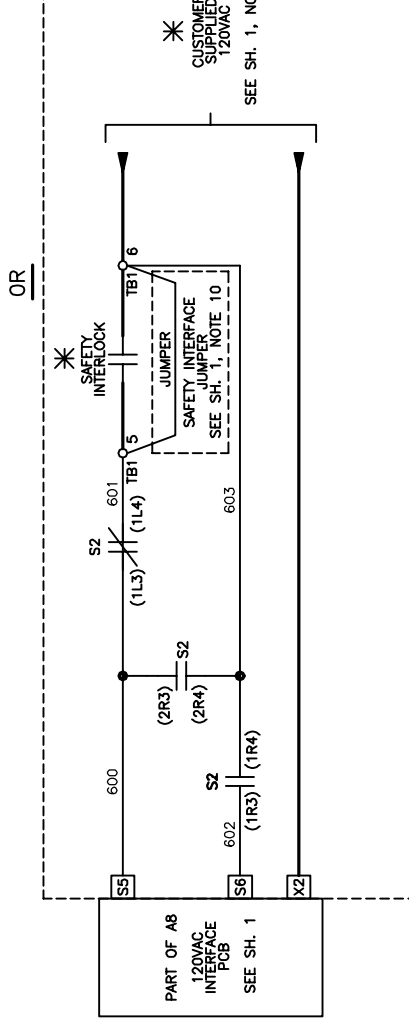
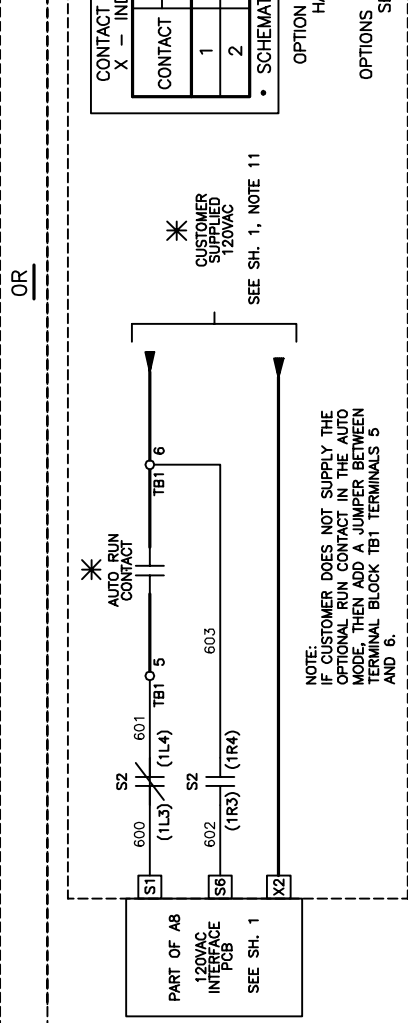
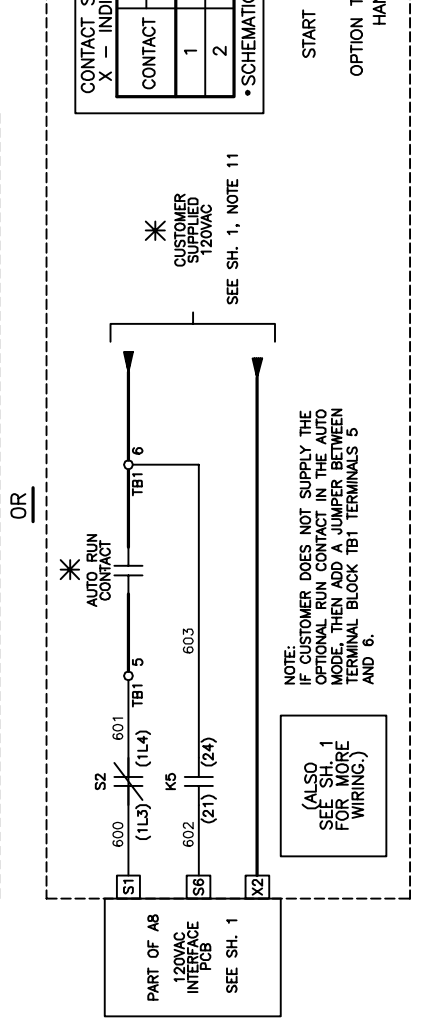
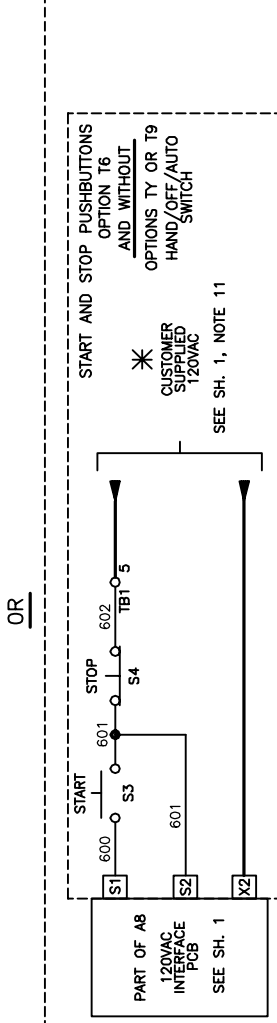
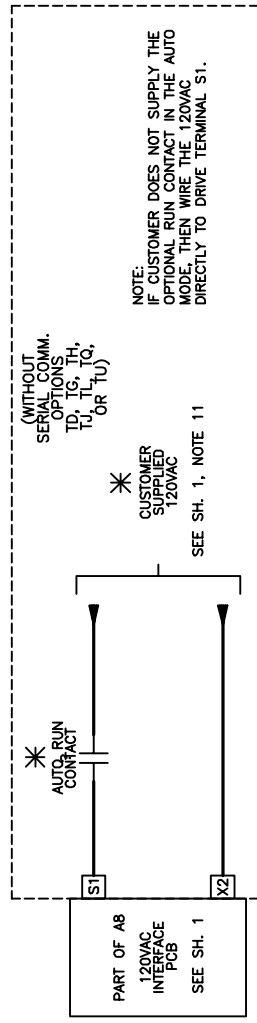
REV.	DESCRIPTION	ECO #	DRAWN BY	DATE
01	CORRECTED CONTACT LOCATION REFERENCE	5166	NSL	04/01/14
00	INITIAL RELEASE	-	NSL	09/26/13

THIS DOCUMENT AND INFORMATION CONTAINED HEREIN IS CONFIDENTIAL AND CANNOT BE COPIED OR DISCLOSED IN WHOLE OR IN PART WITHOUT THE EXPRESS WRITTEN CONSENT OF YASKAWA AMERICA, INC.

YASKAWA

DATE: 09/26/13
 DRAWN BY: N. LAWS
 CHECKED BY: D.R. CMELAK
 DATE: 09/26/13
 DRAWN BY: K. FLIERL
 CHECKED BY: N. LAWS
 DATE: 09/26/13
 DRAWN BY: DS.Q1C3R.17

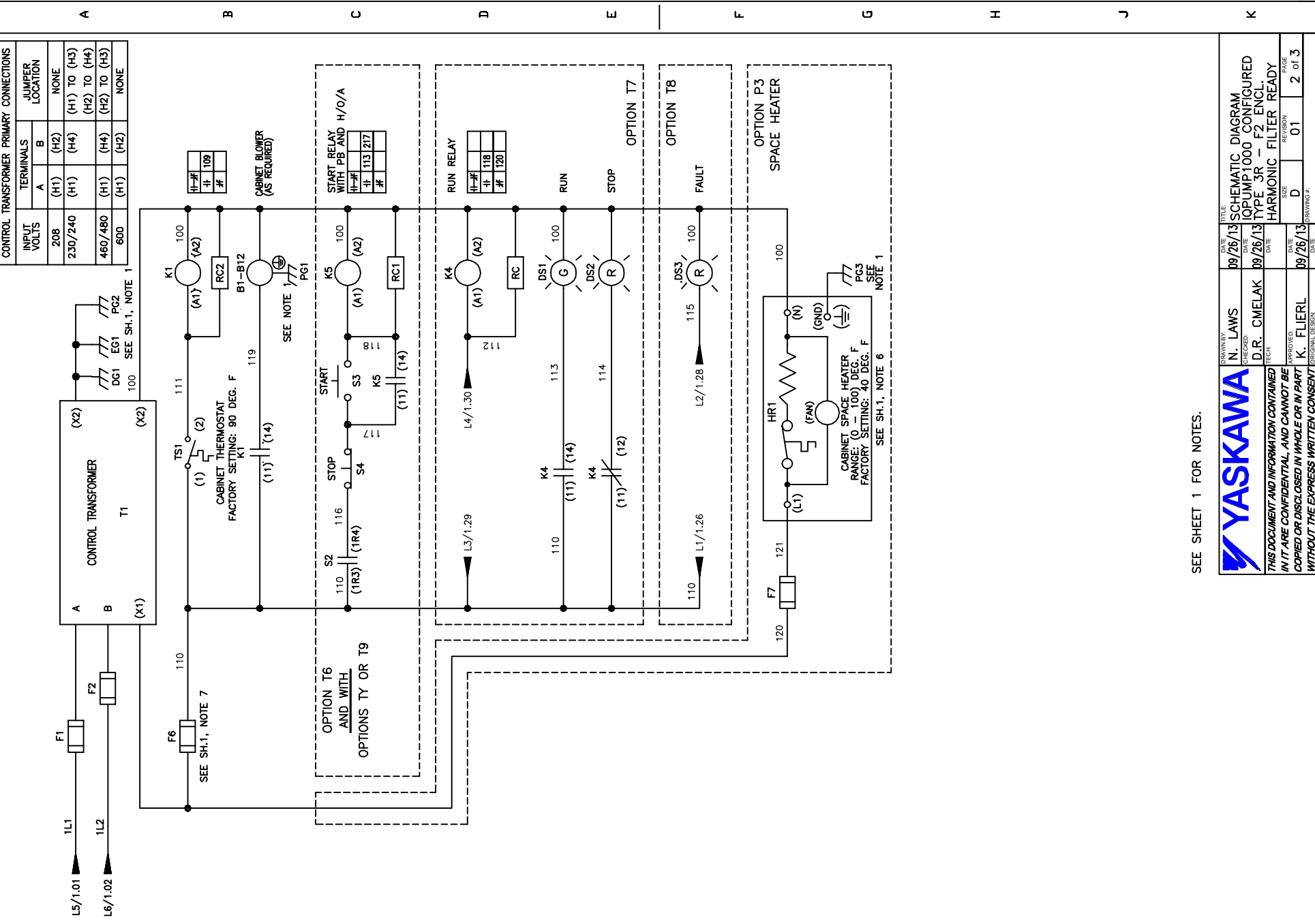
RUN/STOP CONTROL WITH OPTION TV (FROM SHEET 1)



INPUT VOLTS	TERMINALS	JUMPER LOCATION
208	A (H1)	(H2)
230/240	(H1)	(H4)
460/480	(H1)	(H4)
600	(H1)	(H2)

MANUF. LOCATION /TYPE	POSITION	CONTACT
1RO	OFF	X
1LO	AUTO	X
2RO	HAND	X

FOR ALL WIRE CONNECTION TO 120VAC INTERFACE PCB A8: WIRE RANGE: (24 - 17) AWG. LB.-IN WIRE TORQUE: (1.95 - 2.21) LB.-IN



MANUF. LOCATION /TYPE	POSITION	CONTACT
1RO	OFF	X
1LO	AUTO	X
2RO	HAND	X

OPTION T6 AND WITH OPTIONS T7 OR T9

OPTION T6 AND WITH OPTIONS T7 OR T9

OPTION T6 AND WITH OPTIONS T7 OR T9

OPTION T6 AND WITH OPTIONS T7 OR T9

OPTION T6 AND WITH OPTIONS T7 OR T9

OPTION T6 AND WITH OPTIONS T7 OR T9

OPTION T6 AND WITH OPTIONS T7 OR T9

OPTION T6 AND WITH OPTIONS T7 OR T9

OPTION T6 AND WITH OPTIONS T7 OR T9

OPTION T6 AND WITH OPTIONS T7 OR T9

OPTION T6 AND WITH OPTIONS T7 OR T9

OPTION T6 AND WITH OPTIONS T7 OR T9

OPTION T6 AND WITH OPTIONS T7 OR T9

OPTION T6 AND WITH OPTIONS T7 OR T9

OPTION T6 AND WITH OPTIONS T7 OR T9

OPTION T6 AND WITH OPTIONS T7 OR T9

OPTION T6 AND WITH OPTIONS T7 OR T9

OPTION T6 AND WITH OPTIONS T7 OR T9

OPTION T6 AND WITH OPTIONS T7 OR T9

OPTION T6 AND WITH OPTIONS T7 OR T9

OPTION T6 AND WITH OPTIONS T7 OR T9

OPTION T6 AND WITH OPTIONS T7 OR T9

OPTION T6 AND WITH OPTIONS T7 OR T9

OPTION T6 AND WITH OPTIONS T7 OR T9

OPTION T6 AND WITH OPTIONS T7 OR T9

OPTION T6 AND WITH OPTIONS T7 OR T9

OPTION T6 AND WITH OPTIONS T7 OR T9

OPTION T6 AND WITH OPTIONS T7 OR T9

SEE SHEET 1 FOR NOTES.



DATE	REVISION	BY	CHKD	APP'D
09/26/13	01	N. LAWS	D.R. CMELAK	N. LAWS
09/26/13	01	N. LAWS	D.R. CMELAK	N. LAWS
09/26/13	01	N. LAWS	D.R. CMELAK	N. LAWS

TITLE	DATE	REVISION	BY	CHKD	APP'D
SCHEMATIC DIAGRAM	09/26/13	01	N. LAWS	D.R. CMELAK	N. LAWS
IQJUMP1000 CONFIGURED	09/26/13	01	N. LAWS	D.R. CMELAK	N. LAWS
TYPE 3R - F2 ENCL.	09/26/13	01	N. LAWS	D.R. CMELAK	N. LAWS
HARMONIC FILTER READY	09/26/13	01	N. LAWS	D.R. CMELAK	N. LAWS

THIS DOCUMENT AND INFORMATION CONTAINED HEREIN IS CONFIDENTIAL AND NOT BE LOANED, REPRODUCED, COPIED OR DISCLOSED IN WHOLE OR IN PART WITHOUT THE EXPRESS WRITTEN CONSENT OF YASKAWA AMERICA, INC.

DS-Q1C3R.17

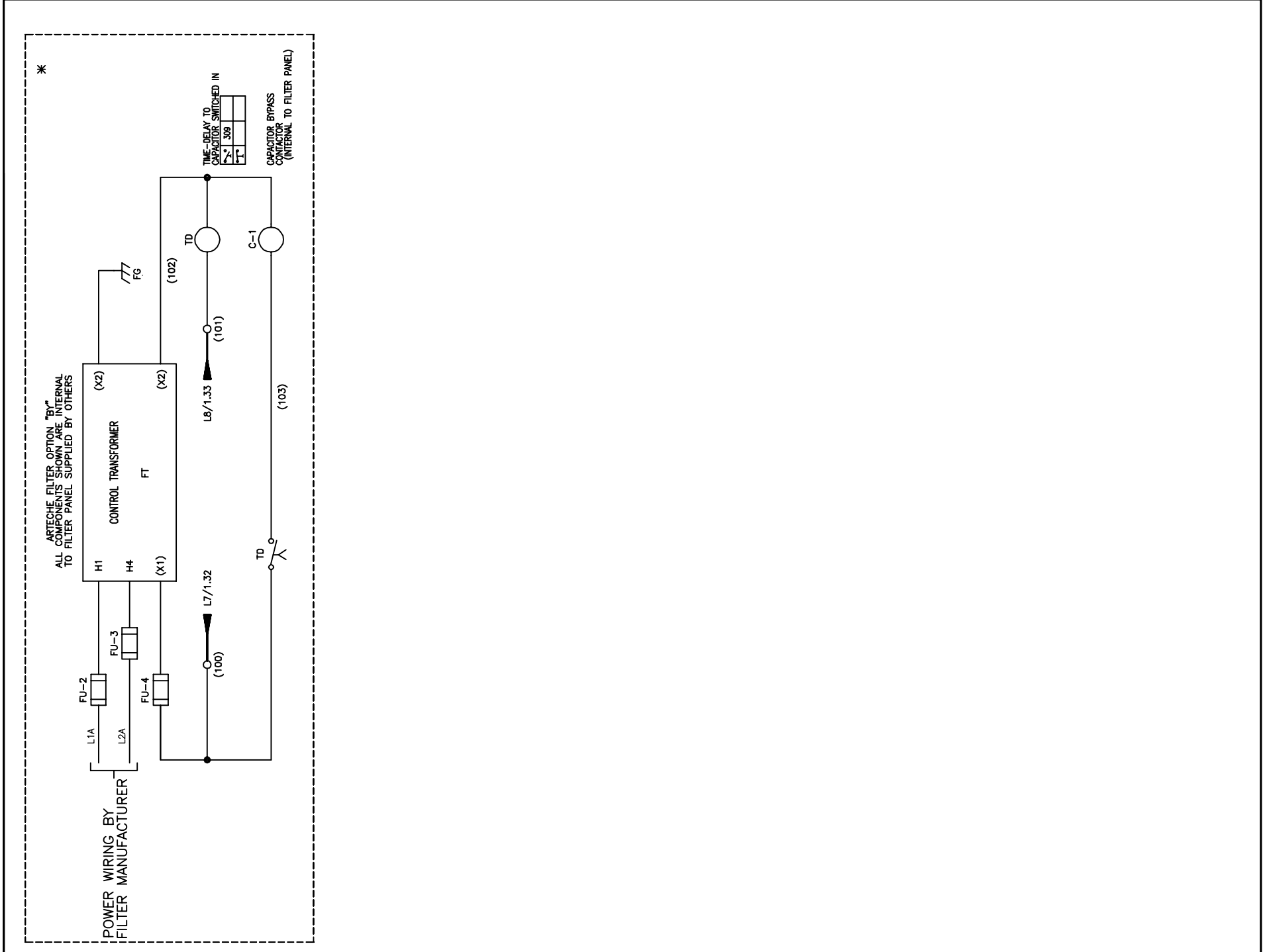


TABLE 2 ARTECHE FILTER SELECTION TABLE

BASE IQPUMP 1000 MODEL NO.	CIMR-PW4A0	CURRENT	ARTECHE LPF SERIES HARMONIC FILTER
Q1C3B477	515	477	LPF 0549 480 K_ *** 65KASCCR LG ##
Q1C3B515	515	515	LPF 0619 480 K_ *** 65KASCCR LG ##
Q1C3B590	675	590	LPF 0666 480 K_ *** 65KASCCR LG ##
Q1C3B660	675	660	LPF 0809 480 K_ *** 65KASCCR LG ##

WHERE *** = N1, N3R, or OPN; WHERE ## = BY or is blank; or - = B or S

SEE SHEET 1 FOR NOTES.



DRAWN BY N. LAWS	DATE 09/26/13	TITLE SCHEMATIC DIAGRAM
CHECKED D.R. CMELAK	DATE 09/26/13	IQPUMP1000 CONFIGURED
TECH	DATE	TYPE 3R - F2 ENCL.
APPROVED K. FLIERL	DATE 09/26/13	HARMONIC FILTER READY
REVISION	SIZE D	REVISION 01
01	3	3 of 3

THIS PAGE FOR CUSTOMER USE ONLY