

NOTES:

- CONNECTED TO THE CABINET. CUSTOMER TO CONNECT THE CABINET GROUND LUGS TO EARTH GROUND AND UTILITY GROUND.
- CONDUIT FITTINGS/HUBS SHALL COMPLY WITH THE 'STANDARD FOR CONDUIT, TUBING, AND CABLE FITTINGS, UL 514B'.
- OR CONDUIT FITTINGS HAVING THE SAME ENVIRONMENTAL RATING AS THE ENCLOSURE SHALL BE USED.
- LIGHTNING PROTECTION OPTION P2 IS TO BE INSTALLED ON THE VOLTAGE TAP OFFS AT THE BREAKER IF REQUIRED.
- BRANCH CIRCUIT PROTECTION TO BE SUPPLIED BY THE CUSTOMER WHEN NOTED ON THE CABINET DATA NAMEPLATE.
- INSULATED TWISTED SHIELDED WIRE IS REQUIRED. SHIELD TO CONNECT TO PROPER TERMINALS AS SHOWN. CONNECT THE SHIELD ONLY AT THIS END. STUB AND ISOLATE THE OTHER END. DO NOT RUN THESE WIRES IN THE SAME CONDUIT AS THE AC POWER AND AC CONTROL WIRES. KEEP ALL WIRING UNDER 50m IN LENGTH.
- CUSTOMER TO ADJUST THE THERMOSTAT ON THE SPACE HEATER HRT FOR THE MINIMUM DESIRED TEMPERATURE INSIDE THE DRIVE CABINET. THIS SET TEMPERATURE IS NORMALLY SELECTED TO BE SLIGHTLY HIGHER THAN THE MINIMUM AMBIENT TEMPERATURE OF THE AIR SURROUNDING THE CABINET, AND IS THE TEMPERATURE AT WHICH THE SPACE HEATER HRT WILL SHUT OFF.
- FOR A CONTROL TRANSFORMER T1 POWER RATING OF 350VA OR GREATER, SECONDARY FUSE F6 IS ADDED.
- IF AC MOTOR IS FURNISHED WITH A N.C. THERMAL SWITCH THEN SET DRIVE PARAMETER H1-08 TO 27. THIS WILL CAUSE THE DRIVE TO COAST TO STOP UPON AN AC MOTOR THERMAL FAULT.
- ALONG WITH THIS, ADD THE FOLLOWING CUSTOMER WIRING: WIRE THE N.C. THERMAL SWITCH BETWEEN TERMINAL S8 OF THE 120VAC INTERFACE CARD AND ONE SIDE OF THE 120VAC SOURCE.
- OPTIONS ID, IG, TH, IU, IL, IQ OR IU CONTROL (SEE UDE00436 FOR MORE INFORMATION).
- CUSTOMER TO REPLACE THE JUMPER WITH NORMALLY CLOSED SAFETY INTERLOCKS, IF APPLICABLE.
- CUSTOMER MUST PROVIDE PROPER SHORT CIRCUIT PROTECTION AND MEANS OF DISCONNECT.

REVISIONS

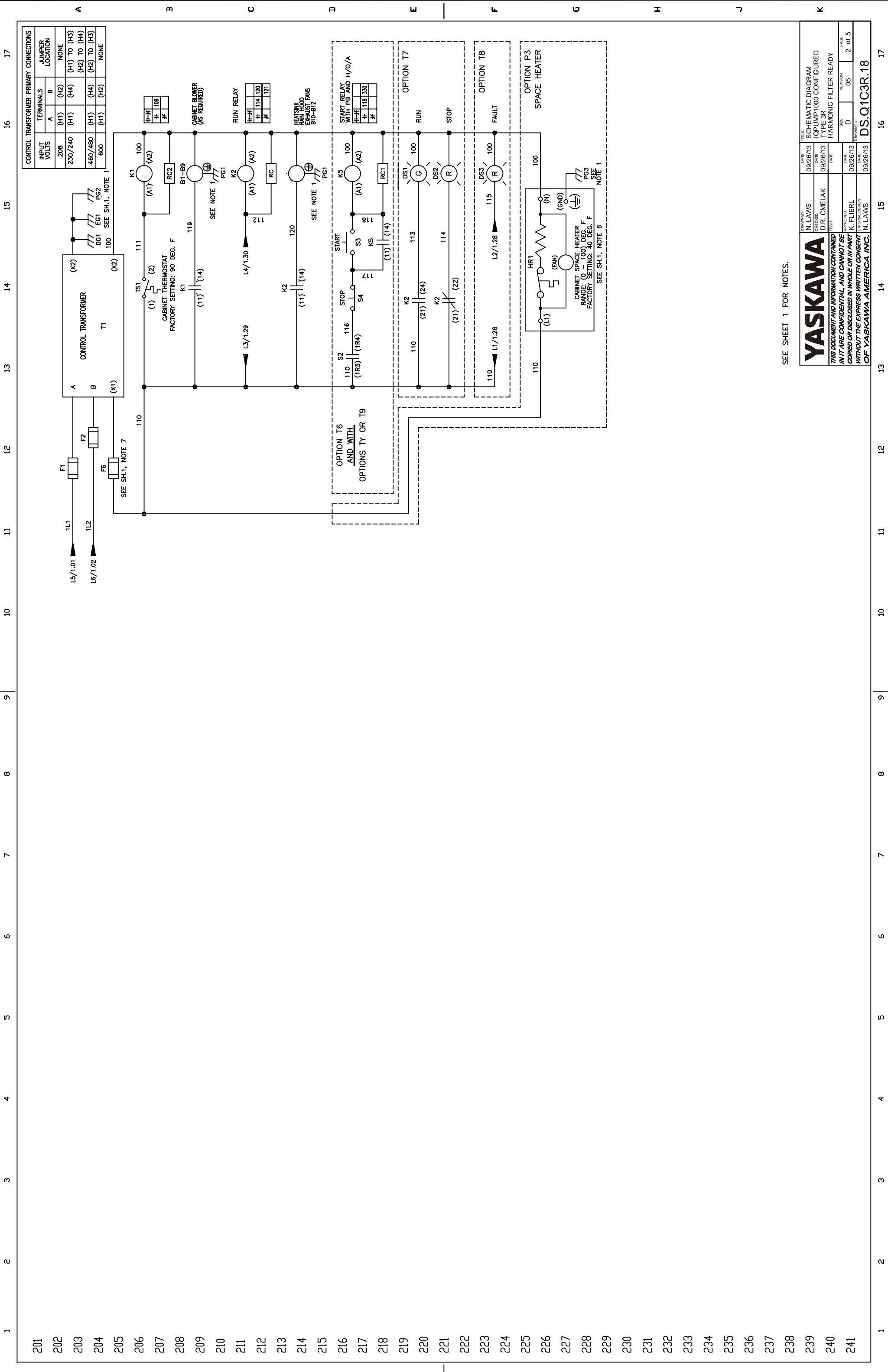
| REV. | DESCRIPTION | ECO # | DRAWN BY | DATE |
|------|------------------------------------|-------|----------|----------|
| 05 | ADDED PAGE NUMBER TO PAGE 1 | 9477 | NSL | 03/25/19 |
| 04 | ADD KS TO HOA, WITE & SERIAL COMMS | 7217 | MDK | 06/29/16 |

YASKAWA

THIS DOCUMENT AND INFORMATION CONTAINED HEREIN IS CONFIDENTIAL AND CANNOT BE COPIED OR DISCLOSED IN WHOLE OR IN PART WITHOUT THE EXPRESS WRITTEN CONSENT OF YASKAWA AMERICA, INC.

DATE: 09/26/13
 DRAWN BY: N. LAWS
 CHECKED BY: D.R. CMELEK
 TECH: K. FLIERL
 APPROVED BY: N. LAWS
 DATE: 09/26/13
 REVISED: 09/26/13
 DRAWING #: DS.Q1C3R.18

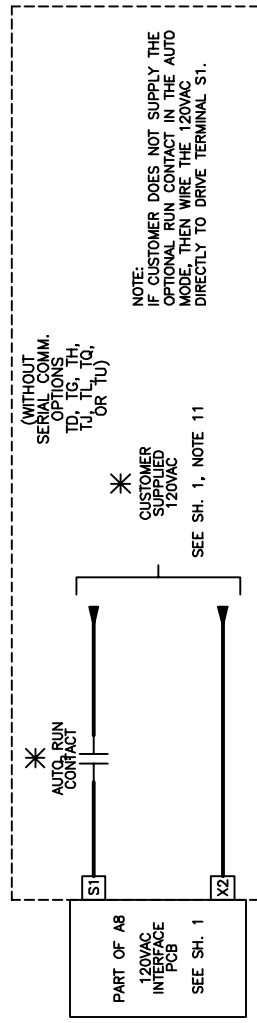
SCHEMATIC DIAGRAM
 IQPUMP1000 CONFIGURED
 TYPE 3R
 HARMONIC FILTER READY
 SIZE D
 PAGE 1 of 5



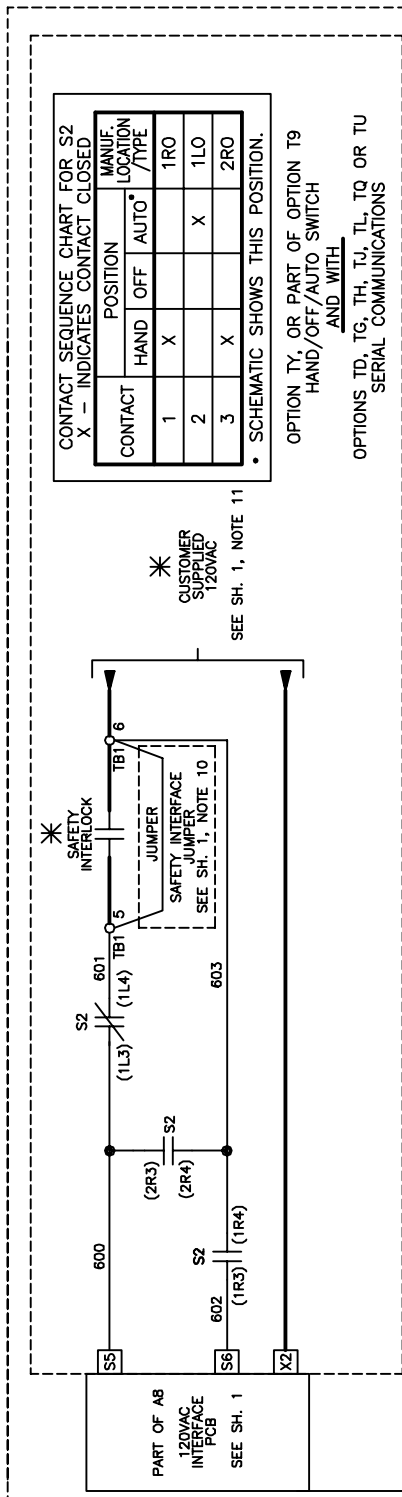
SEE SHEET 1 FOR NOTES.

| | | | |
|-----------|-------------|----------|-------------------|
| DATE | 09/26/13 | TITLE | SCHEMATIC DIAGRAM |
| DRAWN BY | N. LAWS | DATE | 09/26/13 |
| CHECKED | D.R. CMELAK | DATE | 09/26/13 |
| TECH | | DATE | |
| APPROVED | K. FLIERL | DATE | 09/26/13 |
| DATE | 09/26/13 | DATE | 09/26/13 |
| REVISION | 05 | REVISION | 05 |
| SIZE | D | REVISION | 05 |
| PAGE | 2 | REVISION | 05 |
| OF 5 | | REVISION | 05 |
| DRAWING # | DS.Q1C3R.18 | | |

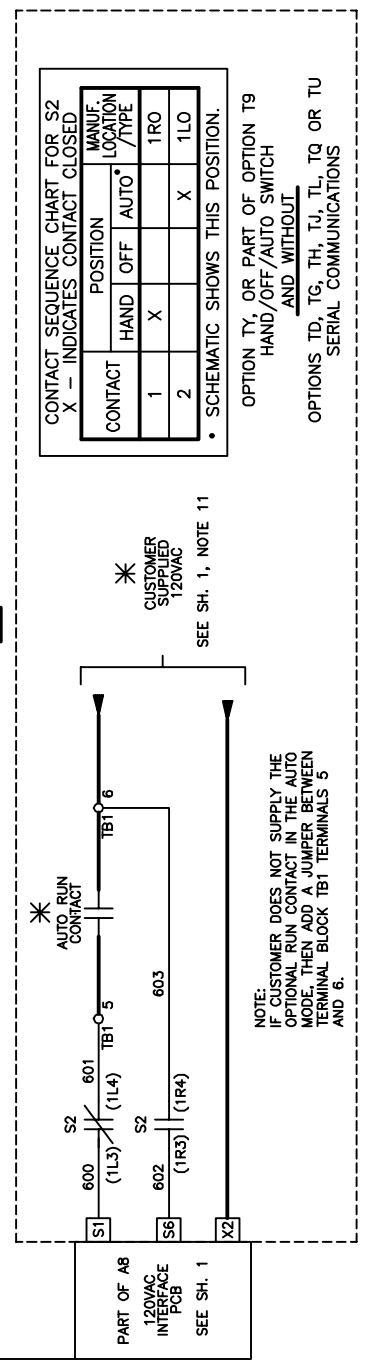
RUN/STOP CONTROL WITH OPTION TV (FROM SHEET 1)



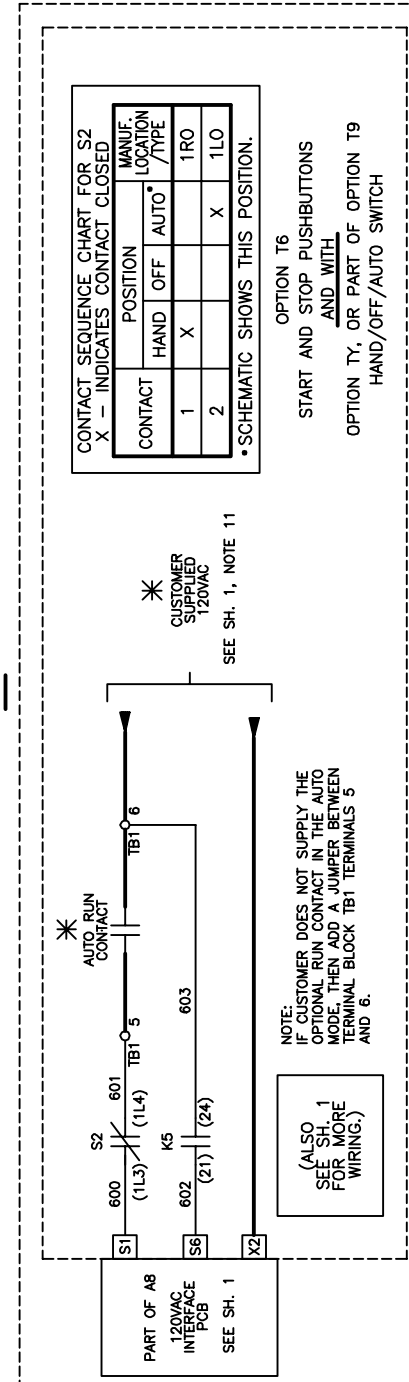
OR



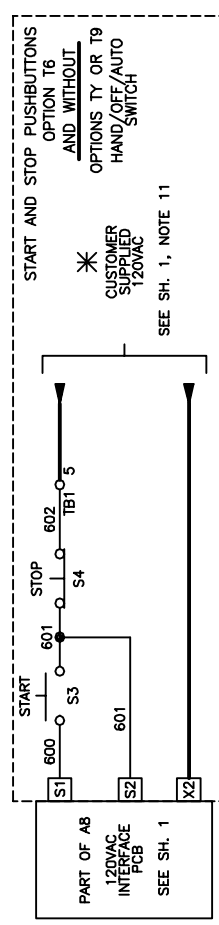
OR



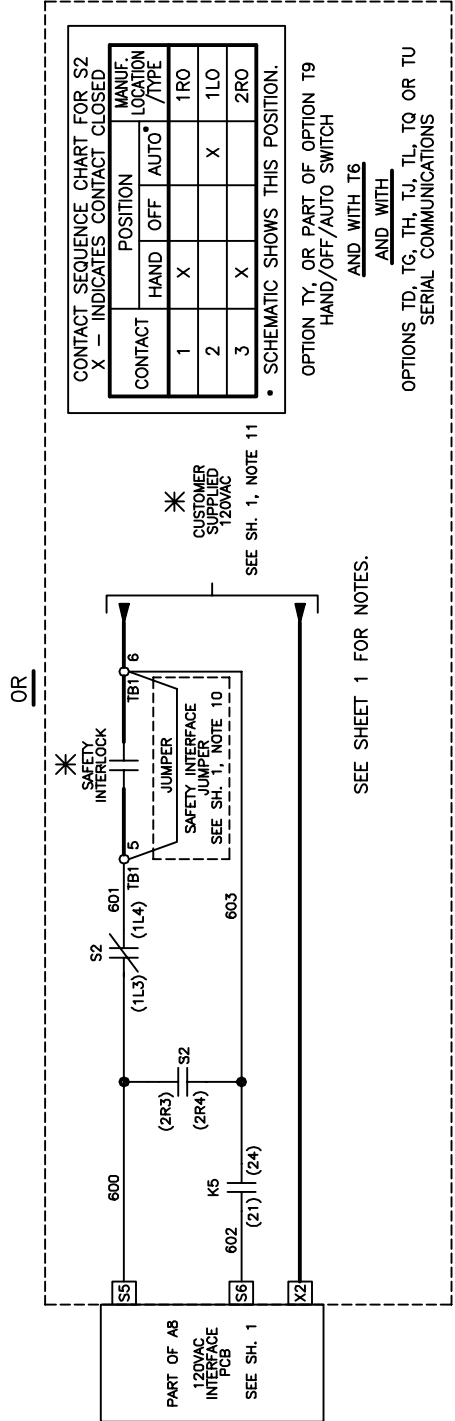
OR



OR



FOR ALL WIRE CONNECTION TO 120VAC INTERFACE PCB A8:
WIRE RANGE: (24 - 17) AWG.
WIRE TORQUE: (1.95 - 2.21) LB.-IN



THIS DOCUMENT AND INFORMATION CONTAINED HEREIN ARE CONFIDENTIAL AND CANNOT BE COPIED OR DISCLOSED IN WHOLE OR IN PART WITHOUT THE EXPRESS WRITTEN CONSENT OF YASKAWA AMERICA, INC.

| DATE | TITLE | DATE | DATE | DATE | DATE | DATE |
|----------|------------------------|----------|----------|----------|----------|----------|
| 09/26/13 | SCHEMATIC DIAGRAM | 09/26/13 | 09/26/13 | 09/26/13 | 09/26/13 | 09/26/13 |
| 09/26/13 | TOPJUMP1000 CONFIGURED | 09/26/13 | 09/26/13 | 09/26/13 | 09/26/13 | 09/26/13 |
| 09/26/13 | TYPE 3R | 09/26/13 | 09/26/13 | 09/26/13 | 09/26/13 | 09/26/13 |
| 09/26/13 | HARMONIC FILTER READY | 09/26/13 | 09/26/13 | 09/26/13 | 09/26/13 | 09/26/13 |
| 09/26/13 | REVISION | 09/26/13 | 09/26/13 | 09/26/13 | 09/26/13 | 09/26/13 |
| 09/26/13 | SIZE | 09/26/13 | 09/26/13 | 09/26/13 | 09/26/13 | 09/26/13 |
| 09/26/13 | D | 09/26/13 | 09/26/13 | 09/26/13 | 09/26/13 | 09/26/13 |
| 09/26/13 | 05 | 09/26/13 | 09/26/13 | 09/26/13 | 09/26/13 | 09/26/13 |
| 09/26/13 | 3 | 09/26/13 | 09/26/13 | 09/26/13 | 09/26/13 | 09/26/13 |
| 09/26/13 | of 5 | 09/26/13 | 09/26/13 | 09/26/13 | 09/26/13 | 09/26/13 |
| 09/26/13 | DS.Q1C3R.18 | 09/26/13 | 09/26/13 | 09/26/13 | 09/26/13 | 09/26/13 |

TABLE 2a ARTECHE FILTER SELECTION TABLE

| BASE IQPUMP, 1000 MODEL NO. | CIMR-PW440 | CURRENT | ARTECHE LPF SERIES HARMONIC FILTER |
|-----------------------------|------------|---------|------------------------------------|
| Q1C3B180 | 208 | 180 | LPF 0210 480 K_ *** 65KASCR LG ## |
| Q1C3B240 | 250 | 240 | LPF 0286 480 K_ *** 65KASCR LG ## |
| Q1C3B302 | 362 | 302 | LPF 0334 480 K_ *** 65KASCR LG ## |
| Q1C3B361 | 362 | 361 | LPF 0406 480 K_ *** 65KASCR LG ## |
| Q1C3B414 | 414 | 414 | LPF 0477 480 K_ *** 65KASCR LG ## |

WHERE *** = N1, N3R, or OPN; WHERE ## = BY or is blank; and _ = B or S

TABLE 2b TCI FILTER SELECTION TABLE

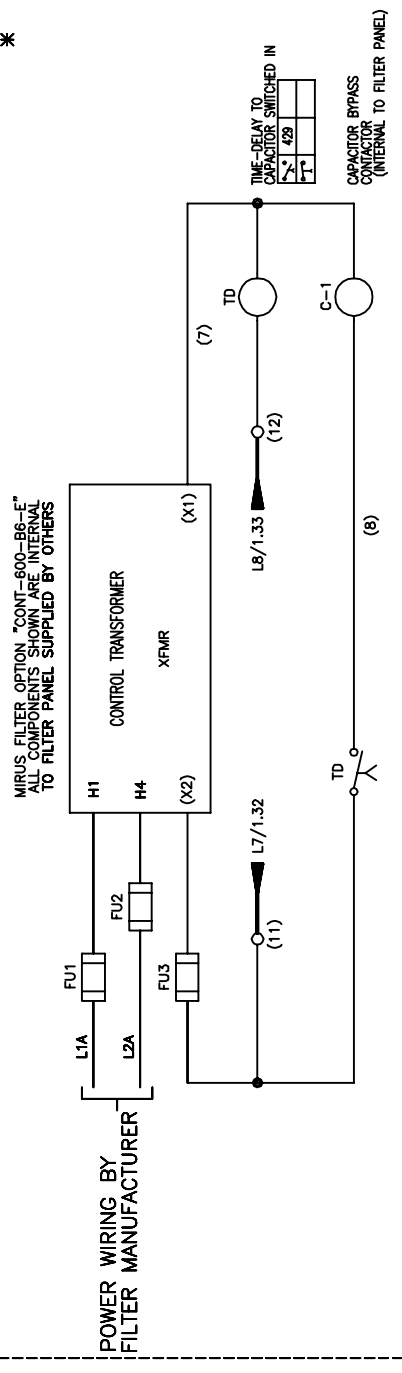
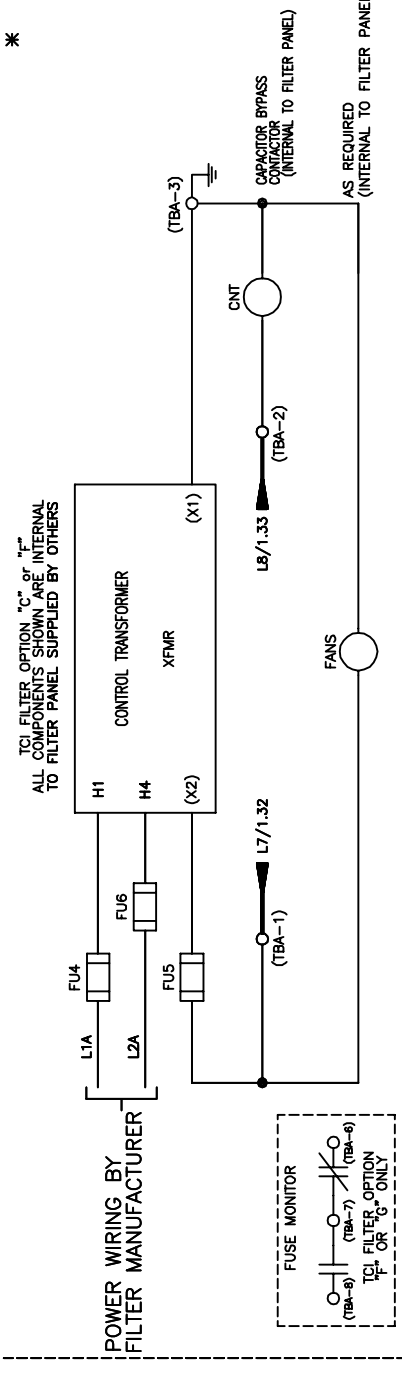
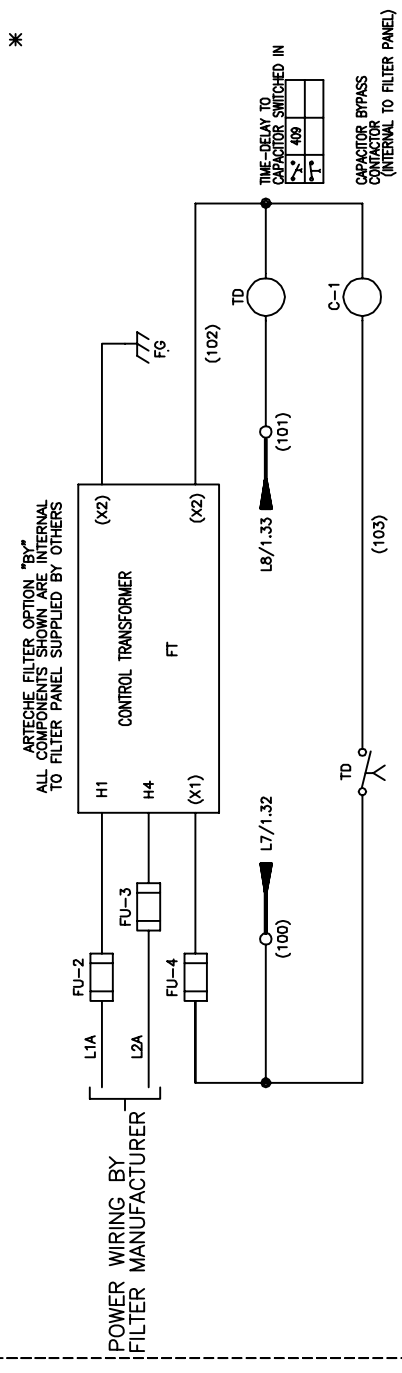
| BASE IQPUMP, 1000 MODEL NO. | CIMR-PW440 | CURRENT | TCI HGP SERIES HARMONIC FILTER |
|-----------------------------|------------|---------|--------------------------------|
| Q1C3B180 | 208 | 180 | HGP0200AWI@0000 |
| Q1C3B240 | 250 | 240 | HGP0250AWI@0000 |
| Q1C3B302 | 362 | 302 | HGP0250AWI@0000 |
| Q1C3B361 | 362 | 361 | HGP0300AWI@0000 |
| Q1C3B414 | 414 | 414 | HGP0350AWI@0000 |

WHERE ! = 0, 1, or 3; WHERE @ = S, C, F, or G; and # = 0 or 1

TABLE 2c MIRUS FILTER SELECTION TABLE

| BASE IQPUMP, 1000 MODEL NO. | CIMR-PW440 | CURRENT | MIRUS LINEATOR SERIES HARMONIC FILTER |
|-----------------------------|------------|---------|---------------------------------------|
| Q1C3B180 | 208 | 180 | AUHF-200-480-60-D-##&&-t |
| Q1C3B240 | 250 | 240 | AUHF-250-480-60-D-##&&-t |
| Q1C3B302 | 362 | 302 | AUHF-300-480-60-D-##&&-t |
| Q1C3B361 | 362 | 361 | AUHF-350-480-60-D-##&&-t |
| Q1C3B414 | 414 | 414 | AUHF-400-480-60-D-##&&-t |

WHERE &&& = EO, EOP, EDM, or E1 and + = E, HP, ED, MD, TA, TB, TC, CONT-600-BE-E, HMIP, HMIM, SP, 8P, or is blank



SEE SHEET 1 FOR NOTES.

YASKAWA

THIS DOCUMENT AND INFORMATION CONTAINED HEREIN IS CONFIDENTIAL AND SHALL BE KEPT AS SUCH. IT IS TO BE USED ONLY FOR THE PURPOSES SPECIFIED IN THE ORDER. WITHOUT THE EXPRESS WRITTEN CONSENT OF YASKAWA AMERICA, INC.

| DATE | REVISION | SIZE | PAGE |
|----------|----------|------|--------|
| 09/26/13 | 05 | D | 4 of 5 |
| 09/26/13 | 05 | D | 4 of 5 |

THIS PAGE FOR CUSTOMER USE ONLY

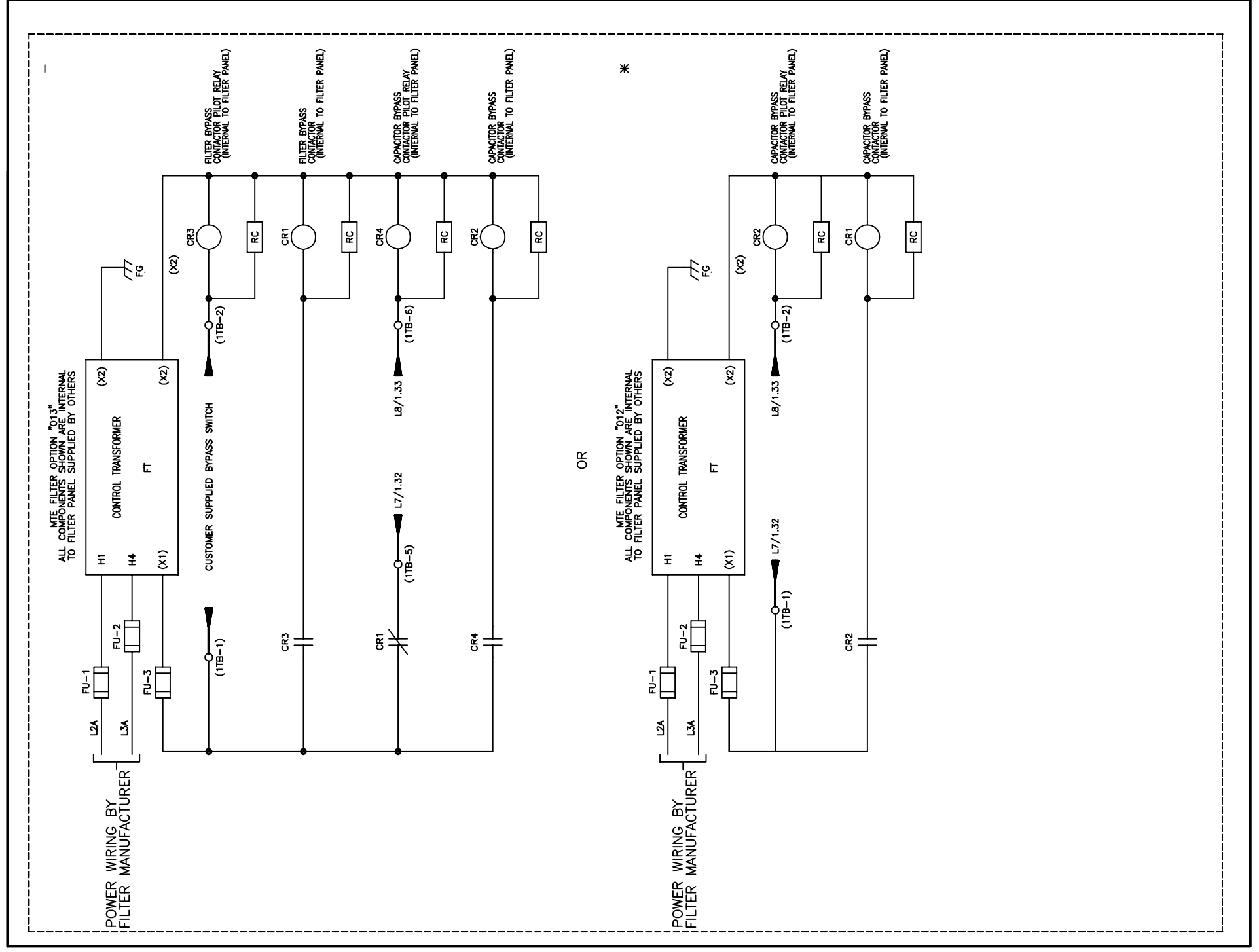
DS.Q1C3R.18

17 16 15 14 13 12 11 10 9 8 7 6 5 4 3 2 1

TABLE 2d MTE FILTER SELECTION TABLE

| BASE IQPUMP 1000 MODEL NO. | CIMR-PW440 | CURRENT | MTE MAP SERIES HARMONIC FILTER |
|----------------------------|------------|---------|--------------------------------|
| Q1C3B180 | 208 | 180 | MAP#0208D~~~ |
| Q1C3B240 | 250 | 240 | MAP#0240D~~~ |
| Q1C3B302 | 362 | 302 | MAP#0320D~~~ |
| Q1C3B361 | 362 | 361 | MAP#0403D~~~ |
| Q1C3B414 | 414 | 414 | MAP#0482D~~~ |

WHERE % = P, G, or W and WHERE ~~~ = 002, 009, 012, 013, 400, or is blank



A B C D E F G H J K

THIS PAGE FOR CUSTOMER USE ONLY

SEE SHEET 1 FOR NOTES.

YASKAWA
THIS DOCUMENT AND INFORMATION CONTAINED IN IT ARE CONFIDENTIAL AND CANNOT BE COPIED OR DISCLOSED IN WHOLE OR IN PART WITHOUT THE EXPRESS WRITTEN CONSENT OF YASKAWA AMERICA, INC.

| | | | | | | | |
|-----------|---|---------|-------------|----------|-----------|------------|----------|
| DATE | 09/26/13 | DATE | 09/26/13 | DATE | 09/26/13 | DATE | 09/26/13 |
| DRAWN BY | N. LAWS | CREATED | D.R. CMELAK | APPROVED | K. FLIERL | REVISION # | 05 |
| TITLE | SCHEMATIC DIAGRAM IQPUMP1000 CONFIGURED TYPE 3R | | | SIZE | D | PAGE | 5 of 5 |
| DRAWING # | DS.Q1C3R.18 | | | | | | |

17 16 15 14 13 12 11 10 9 8 7 6 5 4 3 2 1