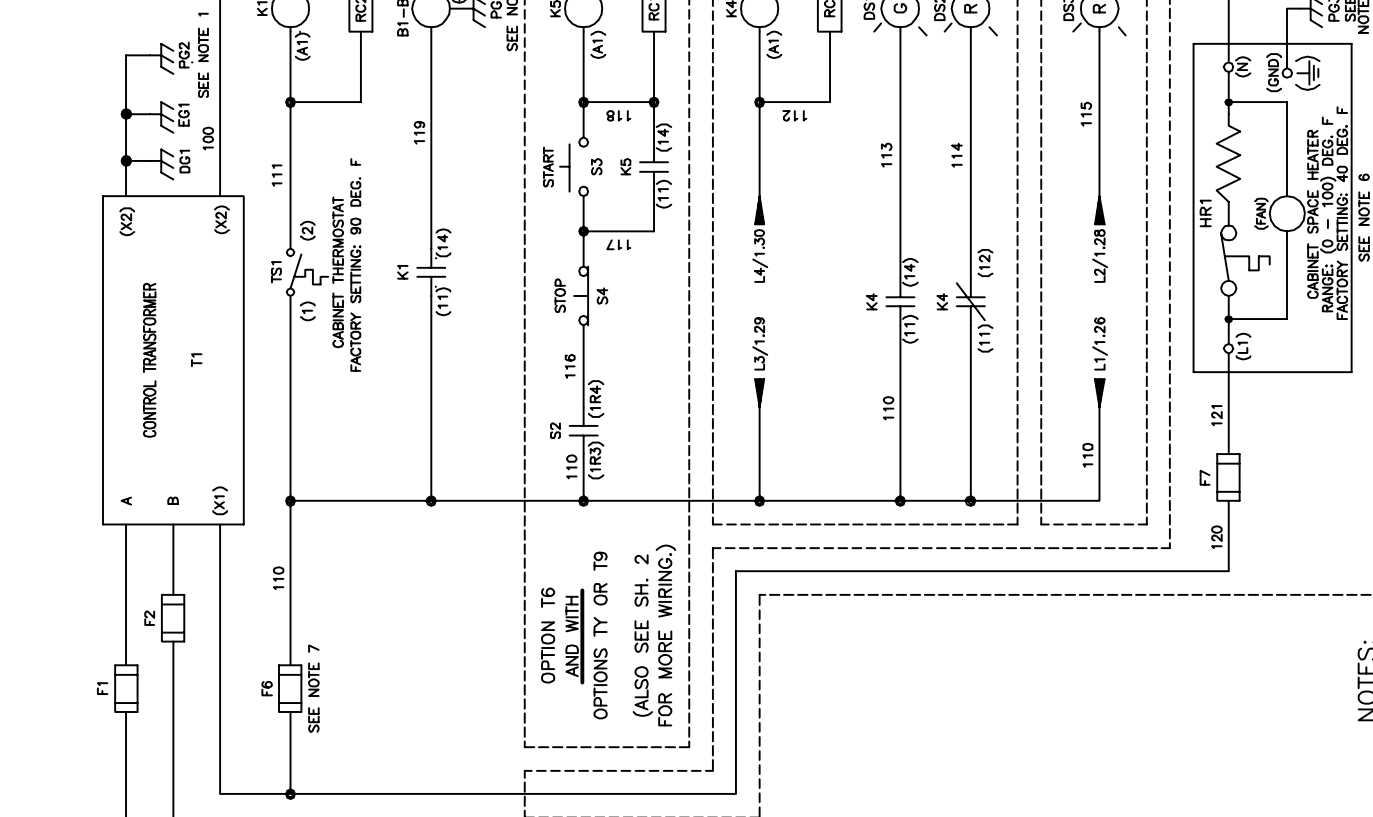


CONTROL TRANSFORMER PRIMARY CONNECTIONS		
INPUT VOLTS	TERMINALS	JUMPER LOCATION
208	A (H1)	(H2)
230/240	(H1)	(H4)
480/480	(H1)	(H4)
600	(H1)	(H2)
		NONE



NOTES:

1. CONNECTED TO THE CABINET. CUSTOMER TO CONNECT THE CABINET GROUND LUGS TO EARTH GROUND AND UTILITY GROUND.
2. CONDUIT FITTINGS/HUBS SHALL COMPLY WITH THE 'STANDARD FOR CONDUIT, TUBING, AND CABLE FITTINGS, UL 514B' OR CONDUIT FITTINGS HAVING THE SAME ENVIRONMENTAL RATING AS THE ENCLOSURE SHALL BE USED.
3. LIGHTNING PROTECTION OPTION P2 IS TO BE INSTALLED ON THE VOLTAGE TAP OFFS AT THE BREAKER IF REQUIRED.
4. BRANCH CIRCUIT PROTECTION TO BE SUPPLIED BY THE CUSTOMER WHEN NOTED ON THE CABINET DATA NAMEPLATE.
5. INSULATED TWISTED SHIELDED WIRE IS REQUIRED. SHIELD TO CONNECT TO PROPER TERMINALS AS SHOWN. CONNECT THE SHIELD ONLY AT THIS END. STUB AND ISOLATE THE OTHER END. DO NOT RUN THESE WIRES IN THE SAME CONDUIT AS THE AC POWER AND AC CONTROL WIRES. KEEP ALL WIRING UNDER 50mm IN LENGTH.
6. CUSTOMER TO ADJUST THE THERMOSTAT ON THE SPACE HEATER HR1 FOR THE MINIMUM DESIRED TEMPERATURE INSIDE THE DRIVE CABINET. THIS SET TEMPERATURE IS NORMALLY SELECTED TO BE SLIGHTLY HIGHER THAN THE MINIMUM AMBIENT TEMPERATURE OF THE AIR SURROUNDING THE CABINET, AND IS THE TEMPERATURE AT WHICH THE SPACE HEATER HR1 WILL SHUT OFF.
7. FOR A CONTROL TRANSFORMER T1 POWER RATING OF 350VA OR GREATER, SECONDARY FUSE F6 IS ADDED.
8. IF AC MOTOR IS FURNISHED WITH A N.C. THERMAL SWITCH THEN SET DRIVE PARAMETER HI-08 TO 27. THIS WILL CAUSE THE DRIVE TO COAST TO STOP UPON AN AC MOTOR THERMAL FAULT. ALONG WITH THIS, ADD THE FOLLOWING CUSTOMER WIRING:
WIRE THE N.C. THERMAL SWITCH BETWEEN DRIVE TERMINALS S8 AND SN, AS PER NOTE 5 ABOVE.
9. OPTIONS ID, IG, IH, IL, IT, IU, IV, TV, TU, OR TV CONTROL (SEE UDE00453 FOR MORE INFORMATION)
10. CUSTOMER TO REPLACE THE JUMPER WITH NORMALLY CLOSED SAFETY INTERLOCKS, IF APPLICABLE.

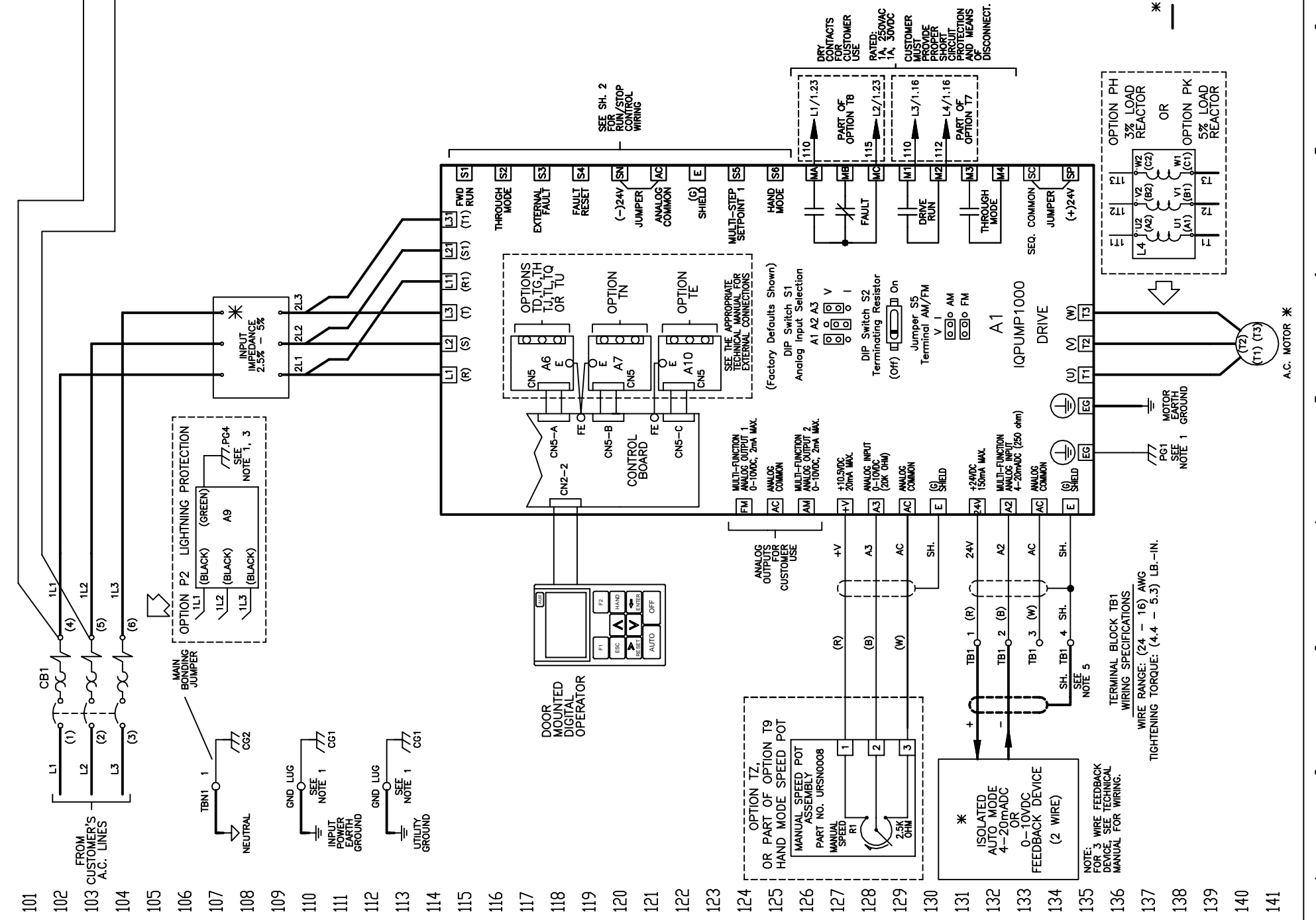
* -- INDICATES COMPONENTS NOT SUPPLIED BY YASKAWA.

SEE DRAWING UDE00452 FOR CUSTOMER CONNECTION TABLES.
SEE DRAWING UDE00453 FOR DRIVE PARAMETER SETTINGS.



REV.	ECO #	DESCRIPTION	DATE	APPROVED	DATE	DATE	DATE	DATE
04	9477	ADDED TOTAL NO. OF PAGES	3/25/19	K. FLIERL	1/31/14	1/31/14	1/31/14	1/31/14
03	7217	ADD KS TO HOA WIT6 & SERIAL COMMS	6/28/16	K. FLIERL	1/31/14	1/31/14	1/31/14	1/31/14

REV.	ECO #	DESCRIPTION	DATE	APPROVED	DATE	DATE	DATE	DATE
04	9477	ADDED TOTAL NO. OF PAGES	3/25/19	K. FLIERL	1/31/14	1/31/14	1/31/14	1/31/14
03	7217	ADD KS TO HOA WIT6 & SERIAL COMMS	6/28/16	K. FLIERL	1/31/14	1/31/14	1/31/14	1/31/14

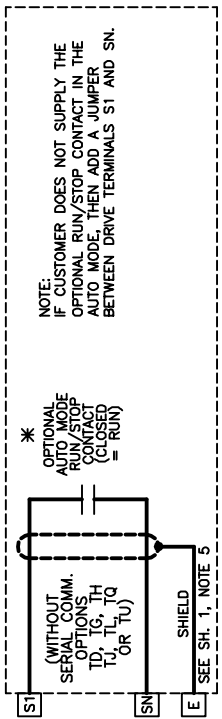


WIRE RANGE: (24 - 16) AWG
TIGHTENING TORQUE: (4.4 - 5.3) LB.-IN.

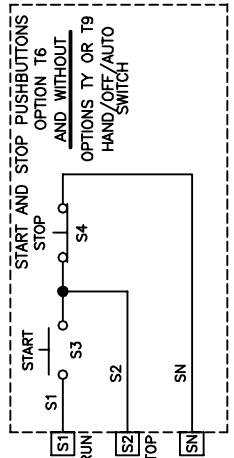
TERMINAL BLOCK TB1
WIRING SPECIFICATIONS

NOTE:
FOR 3 WIRE FEEDBACK
ASSEMBLY,
WIRE THE
FEEDBACK
TERMINAL
MANUAL FOR WIRING.

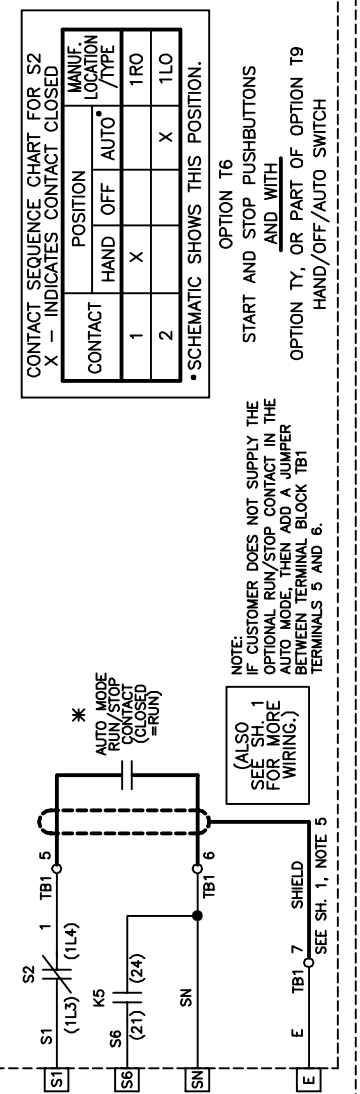
RUN/STOP CONTROL (FROM SHEET 1)



NOTE: IF CUSTOMER DOES NOT SUPPLY THE OPTIONAL RUN/STOP CONTACT IN THE AUTO MODE, THEN ADD A JUMPER BETWEEN DRIVE TERMINALS S1 AND SN.



START AND STOP PUSHBUTTONS
OPTION T6
AND WITHOUT
OPTIONS TY OR T9
HAND/OFF/AUTO
SWITCH

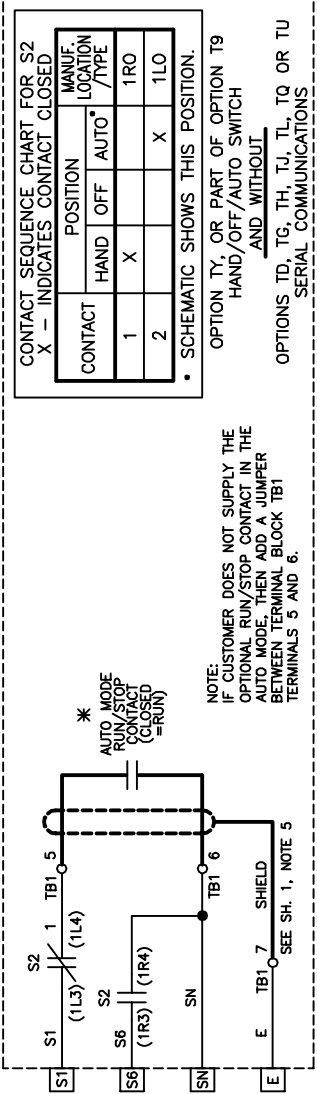


CONTACT SEQUENCE CHART FOR S2
X - INDICATES CONTACT CLOSED

CONTACT	POSITION			MANUF. LOCATION /TYPE
	HAND	OFF	AUTO*	
1	X			1RO
2			X	1LO

* SCHEMATIC SHOWS THIS POSITION.

OPTION T6
START AND STOP PUSHBUTTONS
AND WITH
OPTION TY, OR PART OF OPTION T9
HAND/OFF/AUTO SWITCH

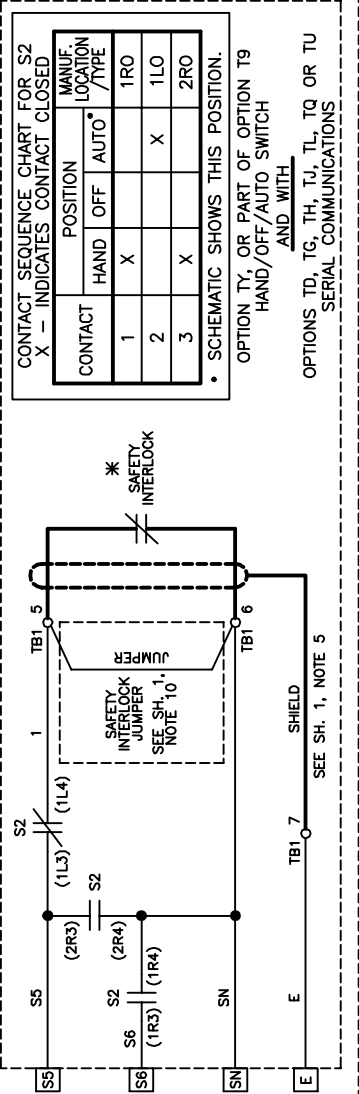


CONTACT SEQUENCE CHART FOR S2
X - INDICATES CONTACT CLOSED

CONTACT	POSITION			MANUF. LOCATION /TYPE
	HAND	OFF	AUTO*	
1	X			1RO
2			X	1LO

* SCHEMATIC SHOWS THIS POSITION.

OPTION TY, OR PART OF OPTION T9
HAND/OFF/AUTO SWITCH
AND WITHOUT
OPTIONS TD, TG, TH, TJ, TL, TQ OR TU
SERIAL COMMUNICATIONS

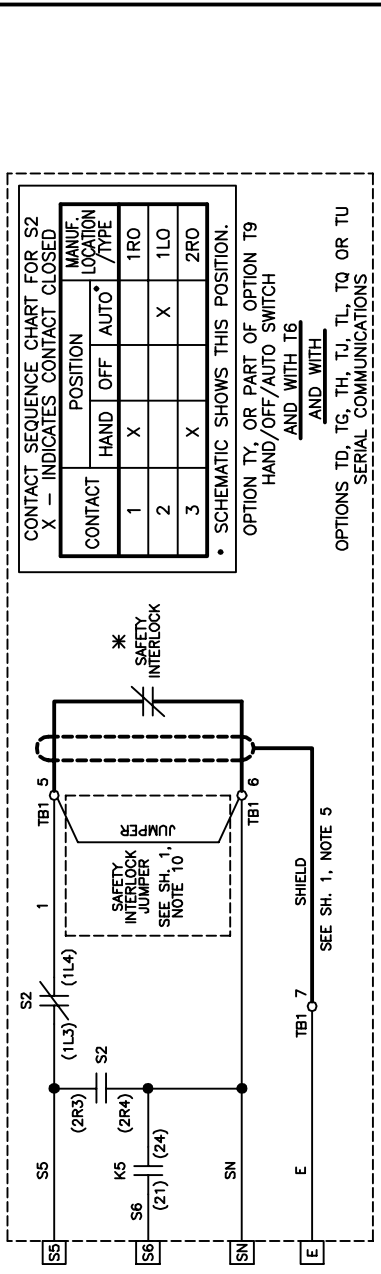


CONTACT SEQUENCE CHART FOR S2
X - INDICATES CONTACT CLOSED

CONTACT	POSITION			MANUF. LOCATION /TYPE
	HAND	OFF	AUTO*	
1	X			1RO
2			X	1LO
3	X			2RO

* SCHEMATIC SHOWS THIS POSITION.

OPTION TY, OR PART OF OPTION T9
HAND/OFF/AUTO SWITCH
AND WITH
OPTIONS TD, TG, TH, TJ, TL, TQ OR TU
SERIAL COMMUNICATIONS



CONTACT SEQUENCE CHART FOR S2
X - INDICATES CONTACT CLOSED

CONTACT	POSITION			MANUF. LOCATION /TYPE
	HAND	OFF	AUTO*	
1	X			1RO
2			X	1LO
3	X			2RO

* SCHEMATIC SHOWS THIS POSITION.

OPTION TY, OR PART OF OPTION T9
HAND/OFF/AUTO SWITCH
AND WITH
OPTIONS TD, TG, TH, TJ, TL, TQ OR TU
SERIAL COMMUNICATIONS

SEE SHEET 1 FOR NOTES.

YASKAWA
THIS DOCUMENT AND INFORMATION CONTAINED HEREIN ARE CONFIDENTIAL AND CANNOT BE REPRODUCED OR DISCLOSED IN WHOLE OR IN PART WITHOUT THE EXPRESS WRITTEN CONSENT OF YASKAWA AMERICA, INC.

DATE	1/30/14	DATE	1/30/14
DESIGNED BY	N. LAWS	DATE	1/30/14
CHECKED BY	D. PACKER	DATE	
TECH		DATE	
APPROVED BY	K. FLIERL	DATE	1/31/14
DATE	1/30/14	DATE	1/30/14
SIZE	D	REVISION	04
DRAWING #		PAGE	2 of 2

DS.Q1C3R.21