

\* - INDICATES COMPONENTS NOT SUPPLIED BY YASKAWA.

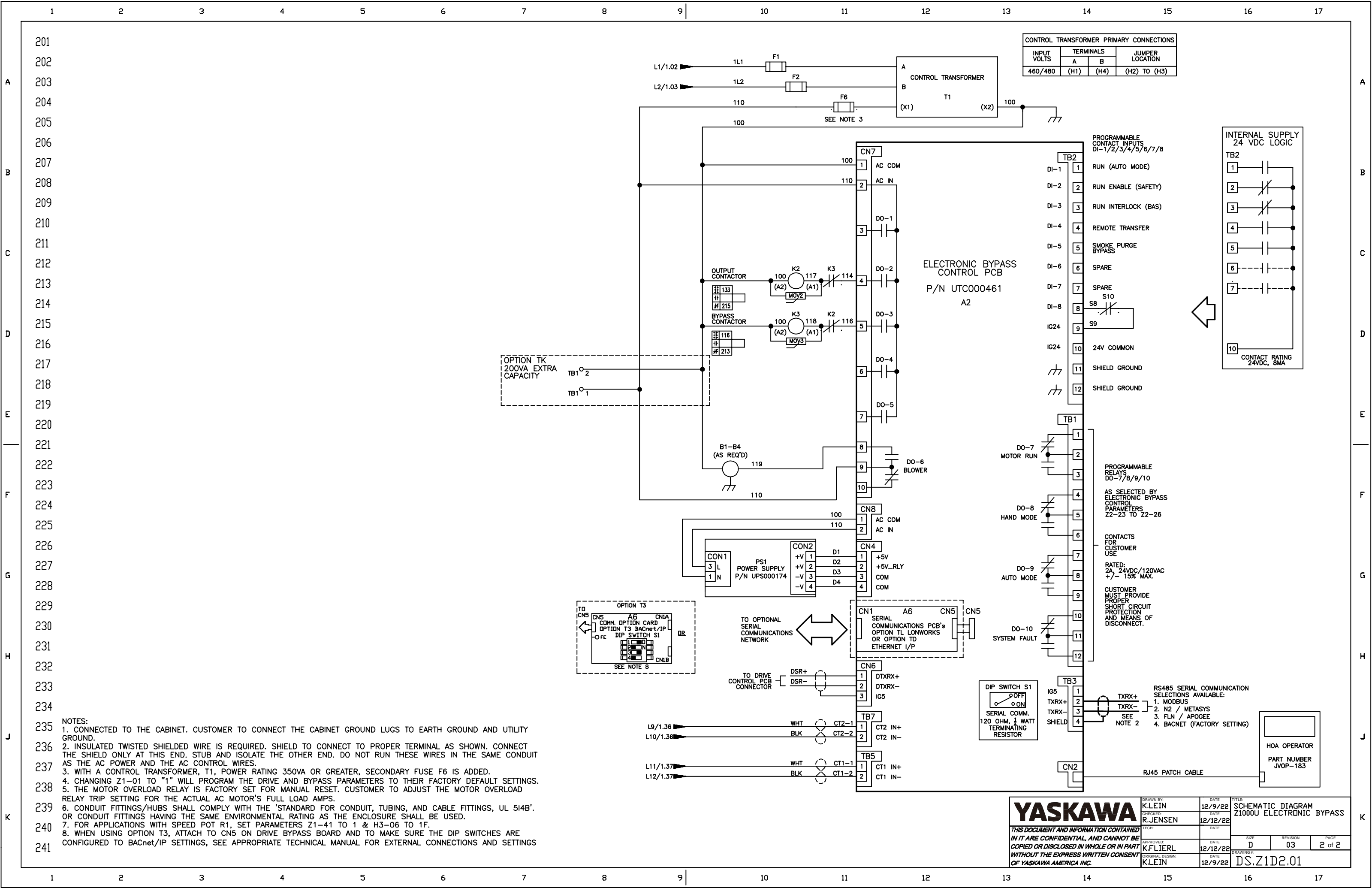
--- INDICATES CUSTOMER WIRING.

SEE SHEET 2 FOR NOTES.

SEE DRAWING UDE00472 FOR CUSTOMER CONNECTION TABLES.

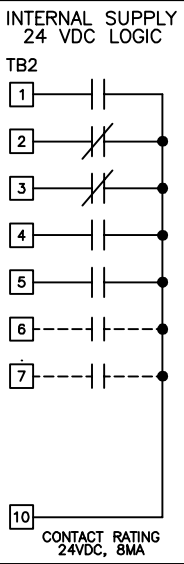
REVISIONS				
REV	DESCRIPTION	ECD #	DRAWN BY	DATE
03	REPLACED RC PADS WITH MOV's	14242	KJL	12/10/24
02	ADDED CONTROL OPTION 3	13155	SEK	7/7/23
01	S2 RESISTOR SET TO ON	12931	MDK	12/9/22

<b>YASKAWA</b>		DRAWN BY: K.LEIN	DATE 12/9/22	TITLE SCHEMATIC DIAGRAM Z1000U ELECTRONIC BYPASS		
		CHECKED: R.JENSEN	DATE 12/12/22			
		TECH:	DATE	SIZE D		
		APPROVED: K.FLIERL	DATE 12/12/22			
		ORIGINAL DESIGN: K.LEIN	DATE 12/9/22	DRAWING # DS.Z1D2.01		
				REVISION 03	PAGE 1 of 2	



CONTROL TRANSFORMER PRIMARY CONNECTIONS			
INPUT VOLTS	TERMINALS		JUMPER LOCATION
	A	B	
460/480	(H1)	(H4)	(H2) TO (H3)

PROGRAMMABLE CONTACT INPUTS  
DI-1/2/3/4/5/6/7/8



PROGRAMMABLE RELAYS  
DO-7/8/9/10

AS SELECTED BY  
ELECTRONIC BYPASS  
CONTROL  
PARAMETERS  
Z2-23 TO Z2-26

CONTACTS  
FOR  
CUSTOMER  
USE

RATED:  
2A, 24VDC/120VAC  
+/- 15% MAX.

CUSTOMER  
MUST PROVIDE  
PROPER  
SHORT CIRCUIT  
PROTECTION  
AND MEANS OF  
DISCONNECT.

RS485 SERIAL COMMUNICATION  
SELECTIONS AVAILABLE:

1. MODBUS
2. N2 / METASYS
3. FLN / APOGEE
4. BACNET (FACTORY SETTING)

HOA OPERATOR  
PART NUMBER  
JVOP-183

**YASKAWA**

THIS DOCUMENT AND INFORMATION CONTAINED  
IN IT ARE CONFIDENTIAL, AND CANNOT BE  
COPIED OR DISCLOSED IN WHOLE OR IN PART  
WITHOUT THE EXPRESS WRITTEN CONSENT  
OF YASKAWA AMERICA INC.

DRAWN BY:  
K.LEIN  
CHECKED:  
R.JENSEN  
TECH:  
K.FLIERL  
APPROVED:  
K.FLIERL  
ORIGINAL DESIGN:  
K.LEIN

DATE  
12/9/22  
DATE  
12/12/22  
DATE  
12/12/22  
DATE  
12/9/22

TITLE  
SCHEMATIC DIAGRAM  
Z1000U ELECTRONIC BYPASS

SIZE	REVISION	PAGE
D	03	2 of 2

DRAWING #  
DS.Z1D2.01