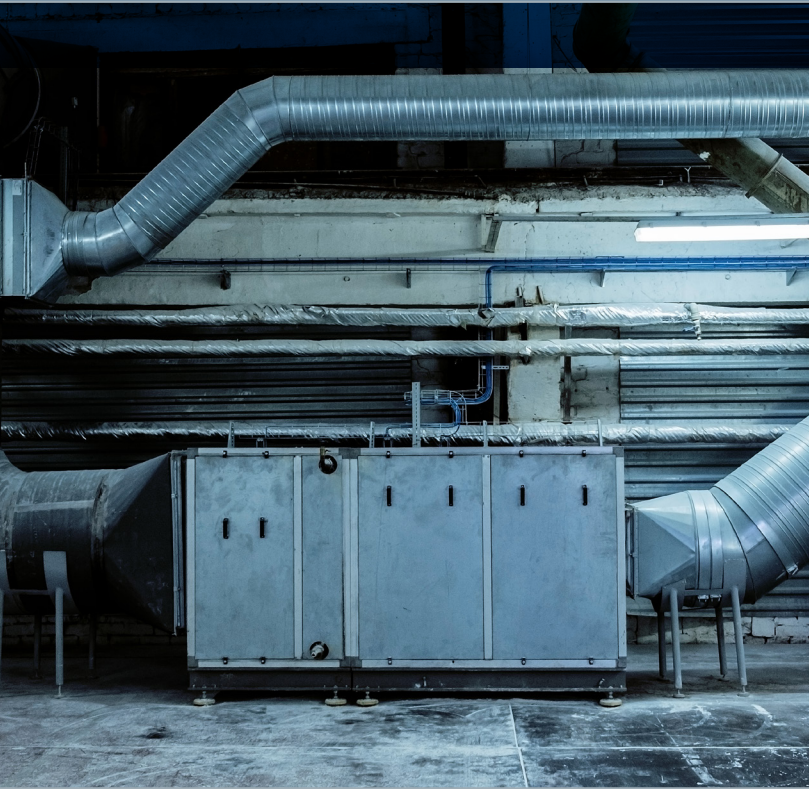


YASKAWA

HV600

UL TYPE 12 VFD SOLUTIONS



What is UL Type 12?

UL Type 12 enclosures employ gasketed doors to seal the enclosure's contents from airborne contaminants and non-pressurized water and oil.

- Constructed for indoor use to provide protection to personnel against access to hazardous parts.
- Provide protection of the equipment inside the enclosure against ingress of solid foreign objects (falling dirt, circulating dust, lint and fibers)
- Provide protection with respect to harmful effects on the equipment due to the ingress of water (dripping and light splashing)

The enhanced environmental protection of UL Type 12 is an integral part of HVAC applications, such as:

- Cooling Towers
- Data Centers
- De-centralized Installations
- Mechanical Rooms
- New Construction
- Non-Mechanical Rooms



HV600 UL TYPE 12 PRODUCT PORTFOLIO

HV600 UL Type 12 Drives and Packages

Yaskawa offers the HV600 in a variety of drive and drive packages that meet UL Type 12 standards, making them the perfect choice for applications like cooling towers, data centers, and mechanical rooms.

STANDALONE DRIVES



IP55/UL TYPE 12

Product Range

- 208 VAC: 3 to 40 HP
- 480 VAC: 3 to 100 HP

IP55/UL TYPE 12 WITH SWITCH

Product Range

- 208 VAC: 3 to 40 HP
- 480 VAC: 3 to 75 HP



NARROW DRIVE PACKAGES



ELECTRONIC BYPASS

Product Range

- 208 VAC: 0.5 to 20 HP
- 480 VAC: 0.75 to 40 HP

CONSULTING - SPECIFYING
engineer.
2023
PRODUCT OF THE YEAR

CONFIGURED

Product Range

- 208 VAC: 0.5 to 20 HP
- 480 VAC: 0.75 to 40 HP



ENCLOSED DRIVE PACKAGES



REDUNDANT

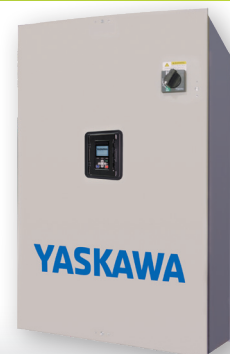
Product Range

- 480 VAC: 3 to 250 HP

ELECTRONIC BYPASS OR CONFIGURED

Product Range

- 208 VAC: 0.5 to 100 HP
- 240 VAC: 0.5 to 100 HP
- 480 VAC: 0.5 to 250 HP



Learn more about HV600 by visiting <https://www.yaskawa.com/hv600>

IT'S PERSONAL

YASKAWA

Yaskawa America, Inc. 1-800-YASKAWA | Email: info@yaskawa.com | yaskawa.com
Document No. FL.HV600.03 | 02/06/2025 | © 2022 Yaskawa America, Inc.