

# DriveWizard Plus Ver.4.07.0055 later

## Technical Manual Supplement to use H1000 Model

### 1. Introduction

H1000 S9110 have a function to select sequence mode (normal sequence mode/crane sequence mode) by setting parameter A1-03=8880. If sequence mode of H1000 S9110 is normal sequence mode, you can change to crane sequence mode by setting parameter A1-03=8880. But you can not set parameter A1-03=8880 on DriveWizard Plus. If you would change sequence mode, please set parameter A1-03=8880 by Digital Operator. You can check the sequence mode by parameter setting of A1-09 (0:standard sequence mode 1:crane sequence mode). This document is the operation procedure that you edit the parameters of H1000 using DriveWizard Plus Ver.4.07.0055 later.

### 2. Creating a New Project

When creating the H1000 project file, you can select sequence mode to select "H1000" or "H1000Crane" in Drive model on "Select Project file" Dialog. When you create a project file of H1000, please see Table 1: Relationship of the Drive model and the software number.

Table 1: Relationship of the Drive model and the software number

Software Number	Drive Model
S900*, S910*, S911* (Standard sequence mode)	H1000
S950*, S960*, S911* (Crane sequence mode)	H1000Crane

Represent a number from 0 to 9 as "\*" .

#### Creating a New Project of standard sequence mode

Select "H1000" to the Drive model, and input the H1000 Software number in .

The screenshot shows the 'Select Project file' dialog box with the following details:

- Buttons:** 'The existing project file open' and 'A new project file create'.
- Project file name:** C:\Documents and Settings\xxxx\デスクトップ\20131208134016.dv
- Drive model:** H1000 (highlighted with a red rectangle)
- Software number:** 9110 (highlighted with a red rectangle). There is an unchecked checkbox for 'Latest number'.
- Area:** Asia/Oceania
- Mode selection table:**

No	Name	Value
o2-04	KVA selection	63 : CIMR-H*2*0005***
A1-02	Control method	2 : Open-loop vector control 1
o2-09	Initialize mode selection	0 : Japanese spec
- Checkboxes:** 'Connects with an inverter at the same time.' (unchecked).
- Buttons:** OK, Cancel.

### Creating a New Project of crane sequence mode

Select "H1000Crane" to the Drive model, and input the H1000 Software number in .

The existing project file open      A new project file create

Project file name: C:\Documents and Settings\xxxx\デスクトップ\20131208134939.dv

Drive model: H1000Crane

Software number: 9110      ☐ Latest number

Area: Asia/Oceania

Mode selection

No	Name	Value
o2-04	KVA selection	63 : CIMR-H*2*0005***
A1-02	Control method	2 : Open-loop vector control 1
o2-09	Initialize mode selection	0 : Japanese spec

☐ Connects with an inverter at the same time.      OK      Cancel

### 3. Connecting to the Drive

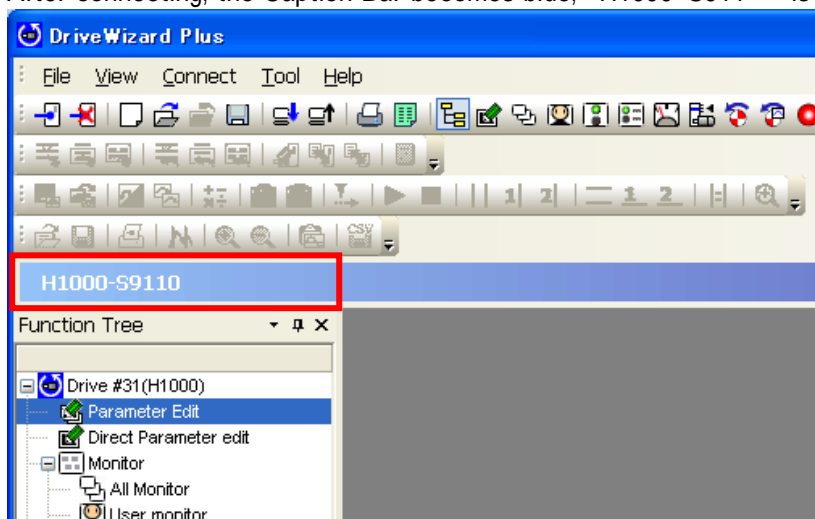
There are two ways to connect.

#### 3.1 Direct connection

DriveWizard Plus checks the sequence mode of the Drive and begins connecting to the drive.

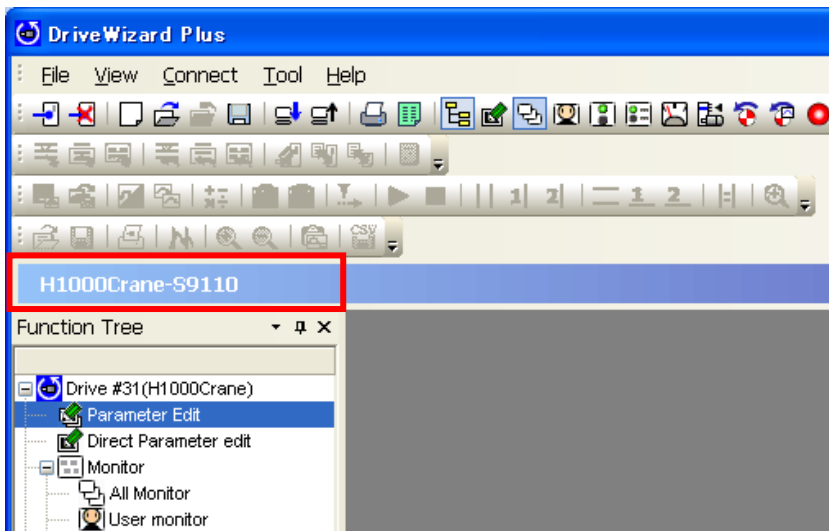
#### Connection to the H1000 S911\* standard sequence mode

After connecting, the Caption Bar becomes blue, "H1000-S911 \*" is displayed on the left edge of Caption Bar.



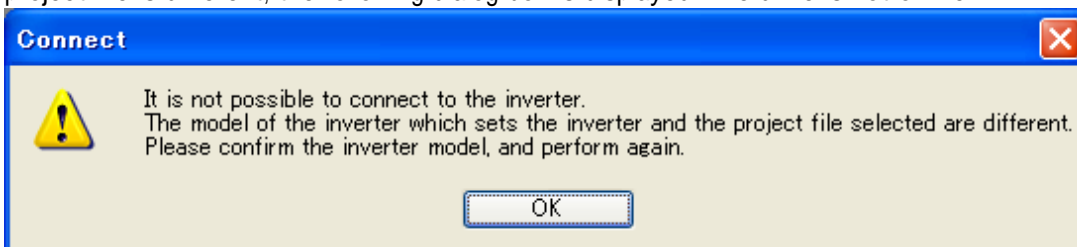
#### Connection to the H1000 S911\* Crane sequence mode

After connecting, the Caption Bar becomes blue, "H1000Crane-S911 \*" is displayed on the left edge of Caption Bar.



### 3.2 Project link connection

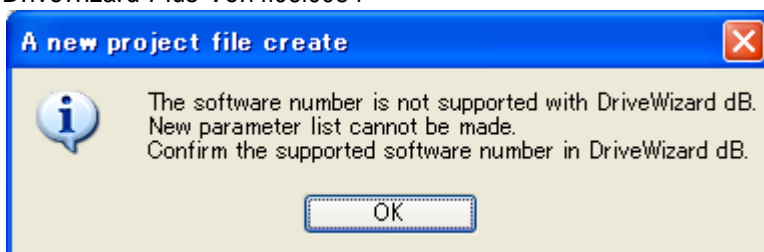
When you connect to H1000 S911\* with the project file open, only if the sequence mode of the Drive and the sequence mode of the project file are the same, it will be online. If the sequence mode of the Drive and the project file is different, the following dialog box is displayed. The drive is not online.



## 4. Compatibility of the file that you saved

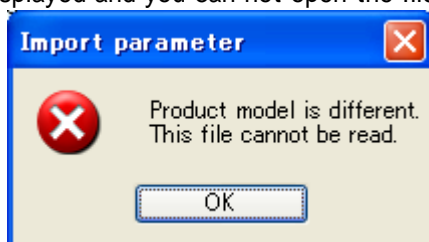
### 4.1 Project File

For compatibility of the project file, please refer to Table 2, 3. Please note that you can not open the project file(H1000 S950 \*, S960 \*) of H1000 Crane that you saved in DriveWizard Plus Ver.4.07.0055 later using previous DriveWizard Plus Ver.4.06.0054



### 4.2 Export File

For compatibility of the export file, please refer to Table 4, 5, 6, 7. If you import a parameter file of the crane sequence mode of H1000 S9110 in DriveWizard Plus Ver.4.06.0054 before, please note that the following error is displayed and you can not open the file.



Error Display example of when you import the export file is not compatible

- : Readable(Compatible)
- × : Not readable(Not compatible)
- : Displays a message that is not compatible and Readable by Clicking on the button "Yes"

Table2 : Open the project file in the offline

		DriveWizard Plus Version that created the project file					
		Ver.4.06.0054 Before		Ver.4.07.0055(Support H1000 S9110) After			
DriveWizard Plus		H1000 Standard (S900*,S910*)	H1000 Crane (S950*,S960*)	H1000 Standard (S900*,S910*)	H1000 Crane (S950*,S960*)	Standard Sequence	H1000 S9110 Crane Sequence
Ver.4.06.0054 Before					×	×	×
Ver.4.07.0055(Support H1000 S9110)After							

Table3 : Open the project file after connecting

		DriveWizard Plus Version that created the project file					
		Ver.4.06.0054 Before		Ver.4.07.0055(Support H1000 S9110) After			
DriveWizard Plus	Connecting Drive	H1000 Standard (S900*,S910*)	H1000 Crane (S950*,S960*)	H1000 Standard (S900*,S910*)	H1000 Crane (S950*,S960*)	Standard Sequence	H1000 S9110 Crane Sequence
Ver.4.06.0054 Before	H1000 Standard (S900*,S910*)		×		×	×	×
	H1000 Crane (S950*,S960*)	×		×	×	×	×
Ver.4.07.0055 (Support H1000 S9110) After	H1000 Standard (S900*,S910*)		×		×		×
	H1000 Crane (S950*,S960*)	×		×		×	
	H1000 S9110 Standard		×		×		×
	H1000 S9110 Crane Sequence	×		×		×	

Table4 : Import Parameter file

		ファイルを作成したDriveWizard Plusのバージョン					
		Ver.4.06.0054 Before		Ver.4.07.0055(Support H1000 S9110) After			
DriveWizard Plus	Drive	H1000 Standard (S900*,S910*)	H1000 Crane (S950*,S960*)	H1000 Standard (S900*,S910*)	H1000 Crane (S950*,S960*)	Standard Sequence	H1000 S9110 Crane Sequence
Ver.4.06.0054 Before	H1000 Standard (S900*,S910*)				×		×
	H1000 Crane (S950*,S960*)				×		×
Ver.4.07.0055 (Support H1000 S9110) After	H1000 Standard (S900*,S910*)		×		×		×
	H1000 Crane (S950*,S960*)	×		×		×	
	H1000 S9110 Standard		×		×		×
	H1000 S9110 Crane Sequence	×		×		×	

Table5 : Import Direct Parameter Setting file,Pattern Operation file

		DriveWizard Plus Version that created the file					
		Ver.4.06.0054 Before		Ver.4.07.0055(Support H1000 S9110) After			
DriveWizard Plus	Drive	H1000 Standard (S900*,S910*)	H1000 Crane (S950*,S960*)	H1000 Standard (S900*,S910*)	H1000 Crane (S950*,S960*)	Standard Sequence	H1000 S9110 Crane Sequence
Ver.4.06.0054 Before	H1000 Standard (S900*,S910*)				×		×
	H1000 Crane (S950*,S960*)				×		×
Ver.4.07.0055 (Support H1000 S9110) After	H1000 Standard (S900*,S910*)		×		×		×
	H1000 Crane (S950*,S960*)	×		×		×	
	H1000 S9110 Standard		×		×		×
	H1000 S9110 Crane Sequence	×		×		×	

Table6 : Import Oscilloscope file, Monitor Setting file

		DriveWizard Plus Version that created the file					
		Ver.4.06.0054 Before		Ver.4.07.0055(Support H1000 S9110) After			
DriveWizard Plus	Drive	H1000 Standard (S900*,S910*)	H1000 Crane (S950*,S960*)	H1000 Standard (S900*,S910*)	H1000 Crane (S950*,S960*)	Standard Sequence	H1000 S9110 Crane Sequence
Ver.4.06.0054 Before	H1000 Standard (S900*,S910*)				×		×
	H1000 Crane (S950*,S960*)				×		×
Ver.4.07.0055 (Support H1000 S9110) After	H1000 Standard (S900*,S910*)						
	H1000 Crane (S950*,S960*)						
	H1000 S9110 Standard						
	H1000 S9110 Crane Sequence						

Table7 : Import Trouble Shooting file, Oscilloscope Data file

		DriveWizard Plus Version that created the file					
		Ver.4.06.0054 Before		Ver.4.07.0055 (Support H1000 S9110) After			
DriveWizard Plus	Drive	H1000 Standard (S900*,S910*)	H1000 Crane (S950*,S960*)	H1000 Standard (S900*,S910*)	H1000 Crane (S950*,S960*)	Standard Sequence	H1000 S9110 Crane Sequence
Ver.4.06.0054 Before	H1000 Standard (S900*,S910*)						
	H1000 Crane (S950*,S960*)						
Ver.4.07.0055 (Support H1000 S9110) After	H1000 Standard (S900*,S910*)						
	H1000 Crane (S950*,S960*)						
	H1000 S9110 Standard						
	H1000 S9110 Crane Sequence						