

USB Driver Installation

This section describes how to install the USB driver software for SERVOPACK.

The SERVOPACK USB driver cannot be installed by using the SigmaWin+ installer.

When a SigmaWin+ equipped PC is connected to the SERVOPACK through a USB connection, use the following procedure to install the USB driver.

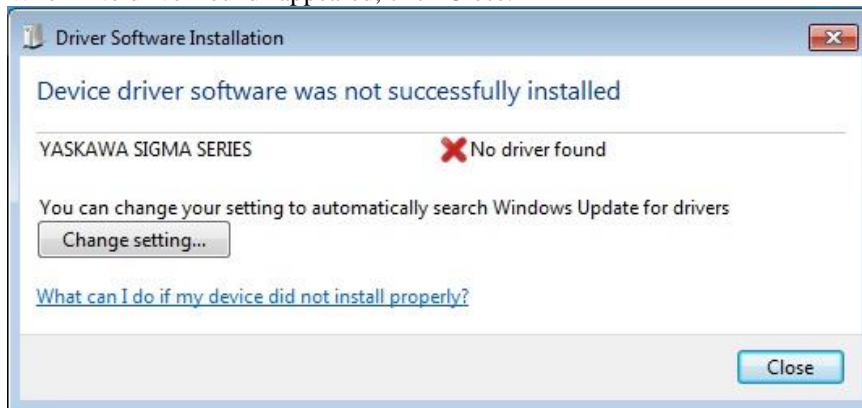
[1.Installing the Driver](#)

[2.Confirming the Installation Status](#)

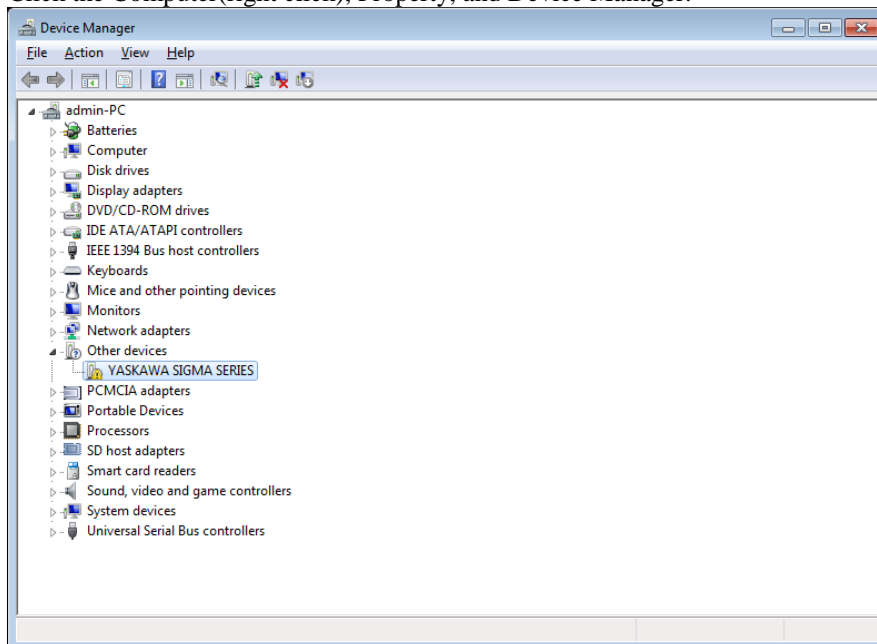
[3.Removing a USB Device](#)

1. Installing the Driver

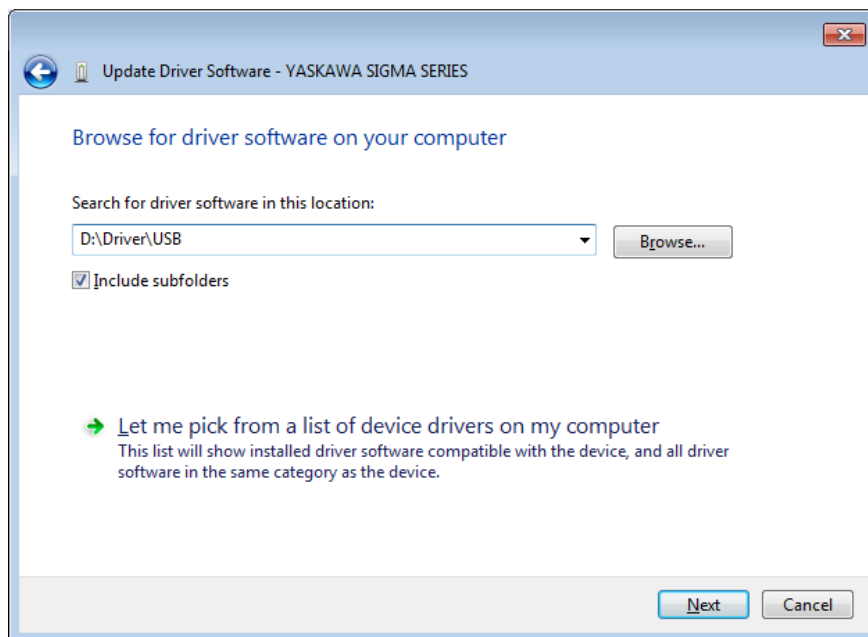
- (1) Connect the SERVOPACK to the PC using a USB cable, and then turn on the power to the SERVOPACK.
- (2) When "No driver found" appeared, click Close.



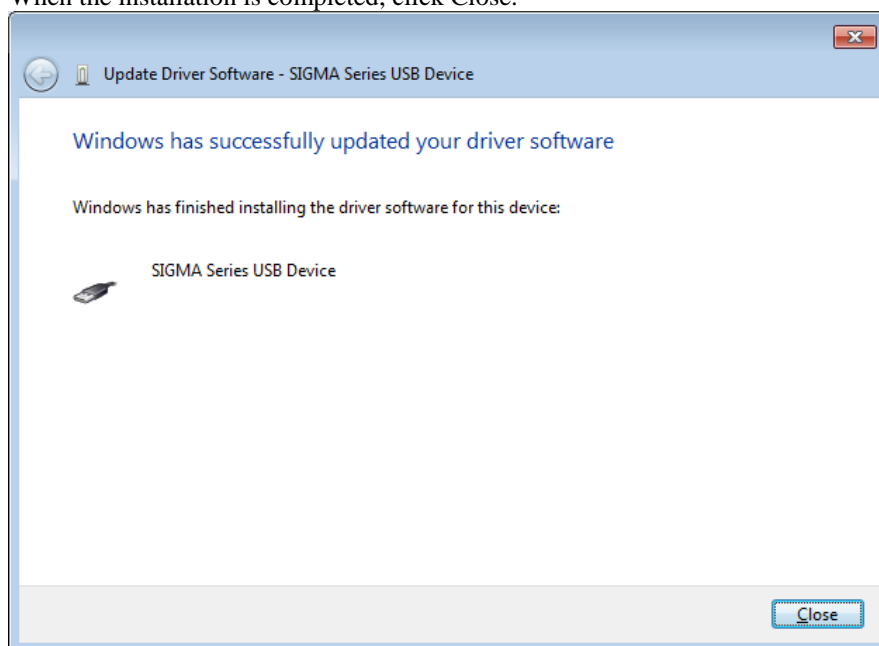
- (3) Click the Computer(right click), Property, and Device Manager.



- (4) Double-Click "YASKAWA SIGMA SERIES", Click "Update Driver".
- (5) Click "Browse my computer for driver software".
- (6) Select the folder where you unzipped the download file. Select "Include subfolders" and then Click Next.



- (7) When “Windows Security” appeared, Click “Install this driver software anyway”.
- (8) The copy of a necessary file starts, and wait for a while until finished.
- (9) When the installation is completed, click Close.

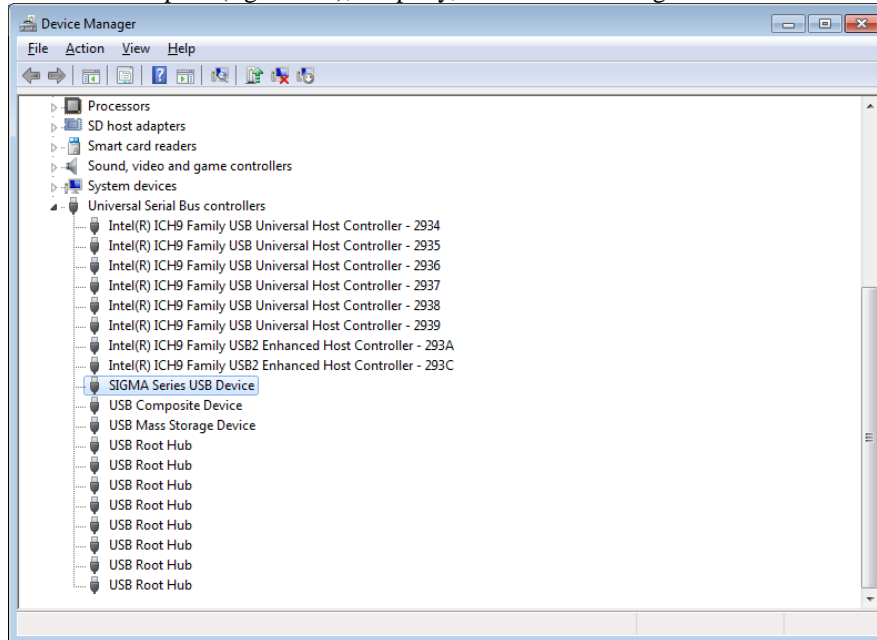


- (10) The driver installation is completed.

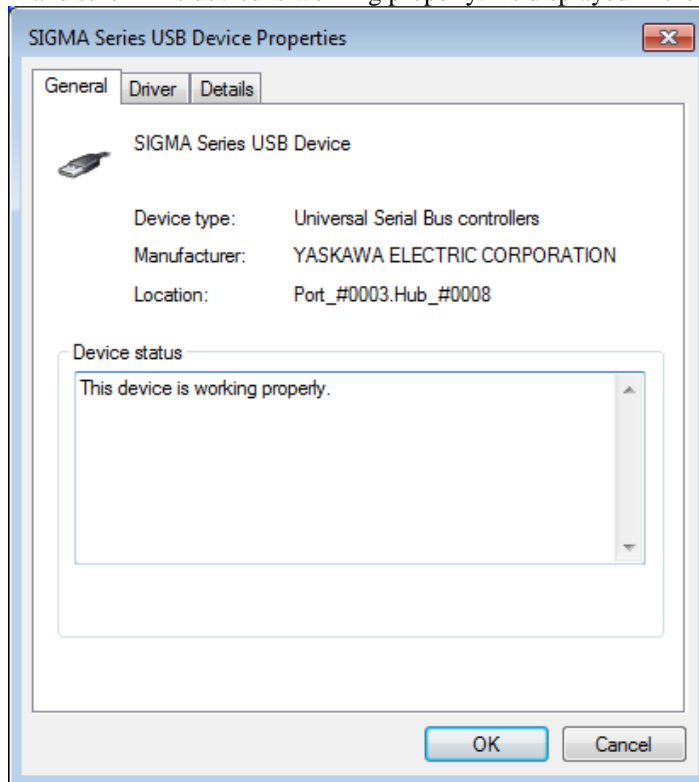
2. Confirming the Installation Status

Use the following procedure to make sure that the system recognizes the SERVOPACK as a USB device and that the USB driver is installed correctly.

- (1) Click the Computer(right click), Property, and Device Manager.



- (2) Double-click SIGMA Series USB Device in the Universal Serial Bus Controllers folder. The SIGMA Series USB Device Properties window will appear. Make sure "This device is working properly." is displayed in the Device status field.



When "This device is working properly." is displayed, the SERVOPACK is ready to be used through a USB connection. If it is not displayed, reinstall the USB driver.

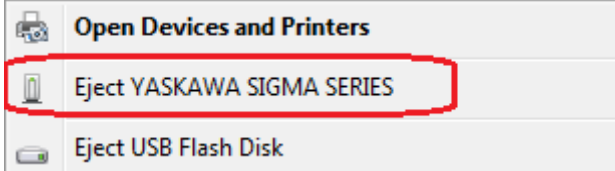
3. Removing a USB Device

Safely remove the device using the following procedure.

- (1) Double-click the Safely Remove Hardware icon in the taskbar in the bottom right corner.



- (2) Select "Eject YASKAWA SIGMA SERIES" in the pulldown menu.



- (3) The processing to remove the selected device will be carried out and a message will appear informing you that the device can be safely removed. The cable can then be safely removed or the power to the SERVOPACK can be safely turned off.