

Yes. Follow the steps listed below.

A. Controller Setup:

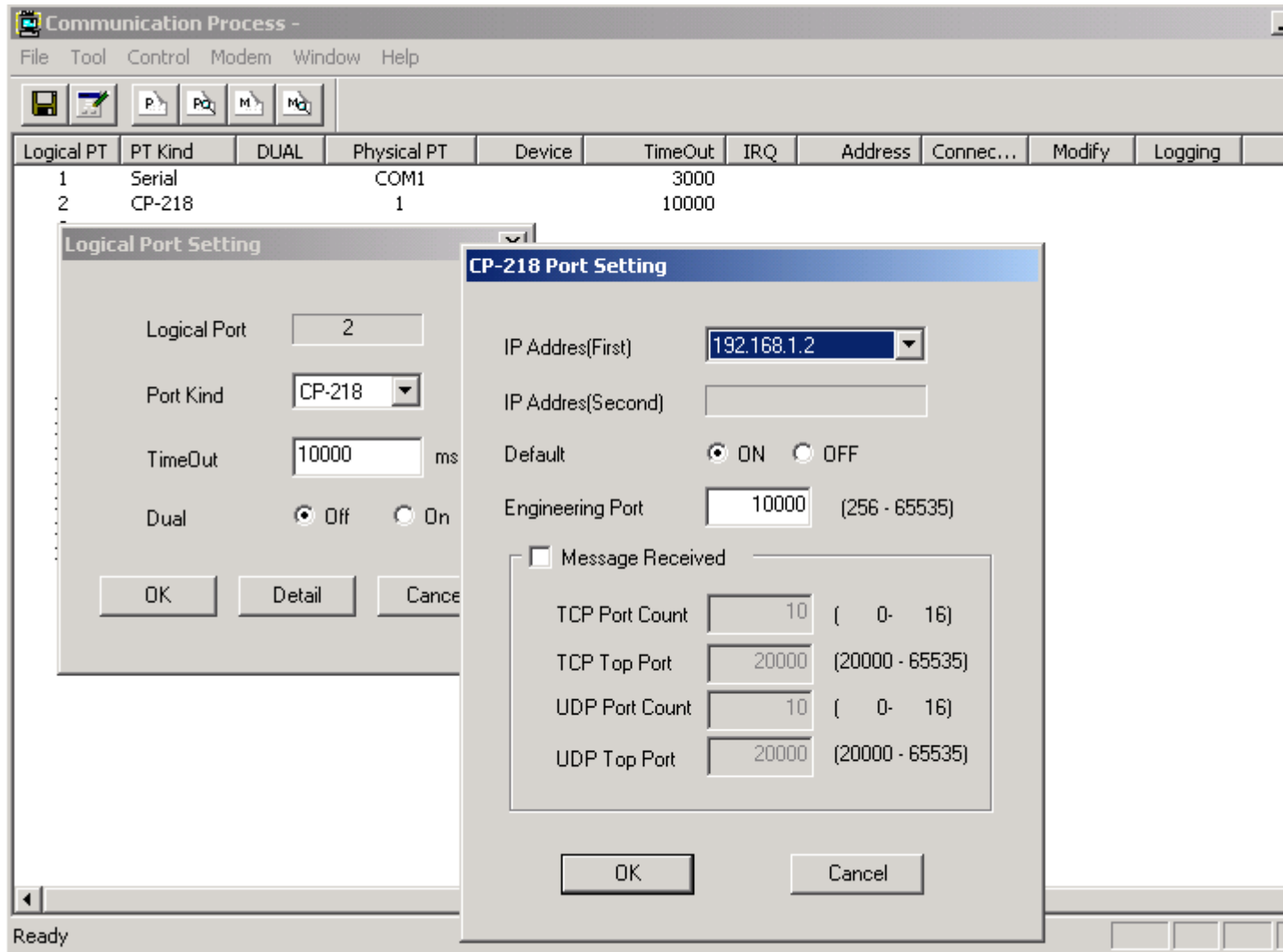
1. Create an MP920 controller folder.
2. Use serial communication to setup the Module Configuration Folder.
(Use RS-232 serial cable part # JEPMC-W5311-03)
(for wiring diagram refer to the following FAQ --> MP920/930 Serial Cable Wiring Diagram)
3. Open 218IF module and **save defaults**. This will setup the module to IP address: 192.168.1.1 and Engineering Port No.: 10000.
4. **Save** configuration and log off.

B. 218IF Hardware Setup:

1. Connect to the 218IF module via **crossover cable** and AUI to UTP **transceiver**.
(See following FAQ for recommended Ethernet Transceiver Module)
2. Supply **12VDC** to the 218IF module.

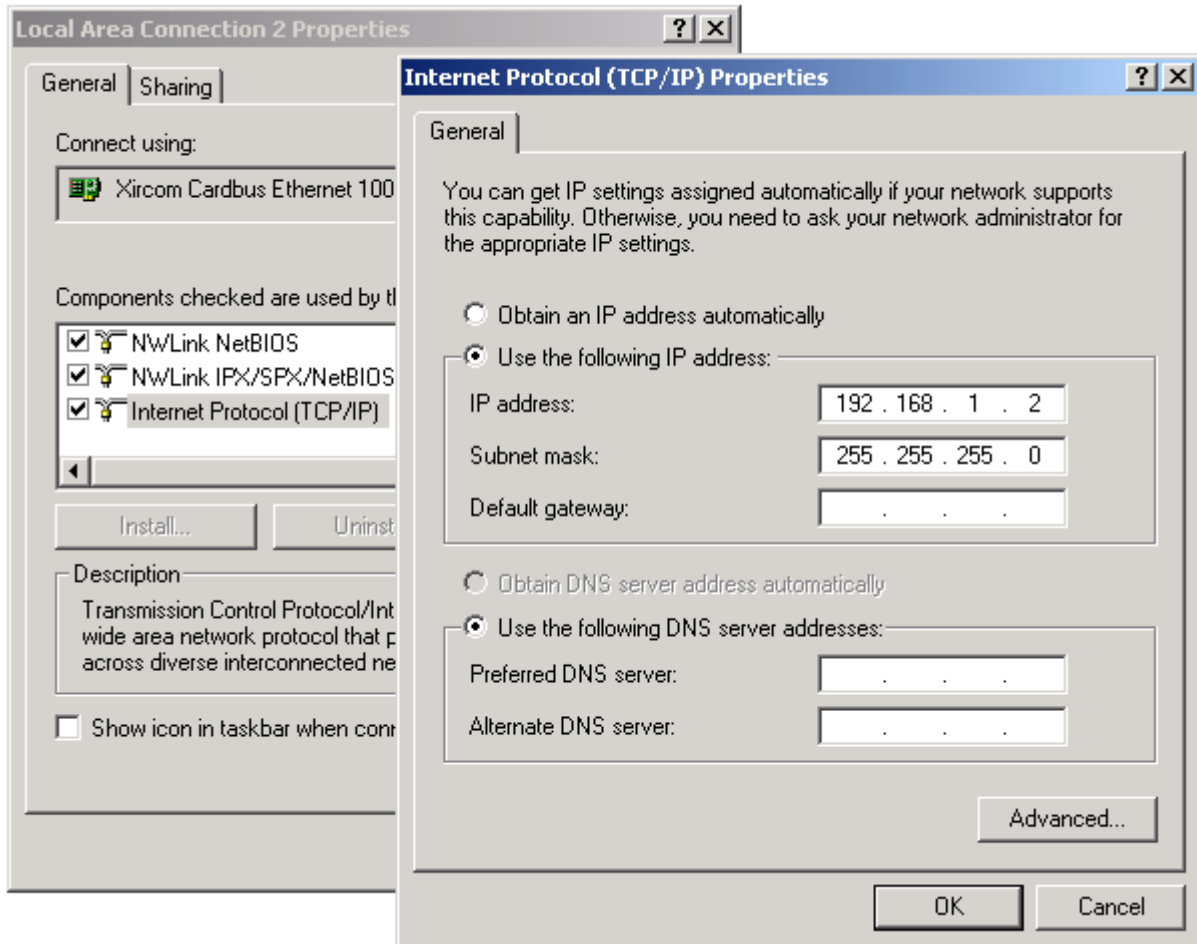
C. Communication Manager Setup:

1. Open Communication Process program and select an empty Logical Port, e.g. 2.
2. Setup port kind: CP-218, IP Address: 192.168.1.2, and Engineering Port:10000.
3. **Save** and exit program.



D. PC Setup:

1. From Start Menu, select Network and Dial-Up Connections.
2. Setup Local Area Connection, below, to use IP address: 192.168.1.2 with a subnet mask: 255.255.255.0.
3. Select OK and reboot PC.



E. Communicating with MP920 via 218IF;

1. Run MotionWorks File Manager, right-click on controller CPU1, created above, and select Properties.
2. Go to Network tab and select Logical Port No. 2 from the list with IP address: 192.168.1.1.
3. Go to File Manager and log on from CPU1.