

**Title:** Convert a MotionWorks IEC Version 2 Project into Version 3

**Product(s):** MPiec Controllers

**Doc. No.** CNT-T28IHH

## Application Overview

This application note provides a detailed process for converting MotionWorks IEC Version 2 projects to Version 3. Some prerequisites include:

- Installing the Application Code Toolboxes for MotionWorks IEC Version 3
  - [Application Code Toolboxes link](#)
- Upgrading firmware:
  - [Upgrading Firmware on an MPiec Series Controller](#)
- Converting a user's library from MotionWorks IEC Version 2 to Version 3
  - [CNT-67A785 Convert MWiec 2 Library to MWiec 3](#)

## Application Requirements

Component	Product and Model Number
Software	MotionWorks IEC 2 Pro 2.5.0.78 and MotionWorks IEC 3 Pro 3.1.0.58
Firmware	3.0.3

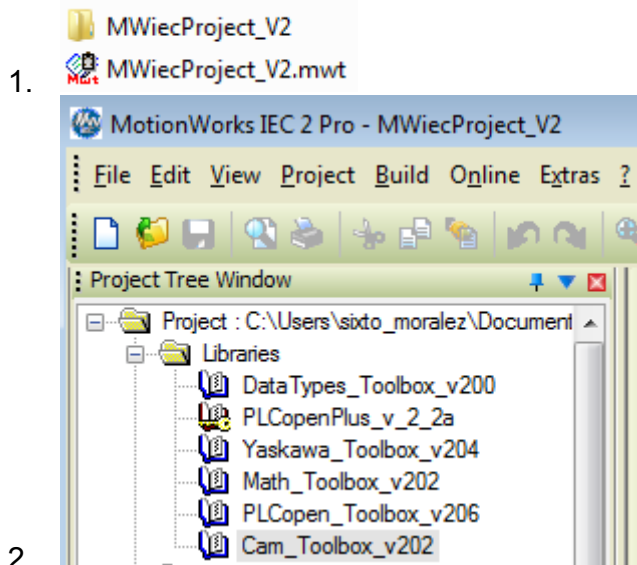
**Title:** Convert a MotionWorks IEC Version 2 Project into Version 3

**Product(s):** MPiec Controllers

**Doc. No.** CNT-T28IHH

## Implementation

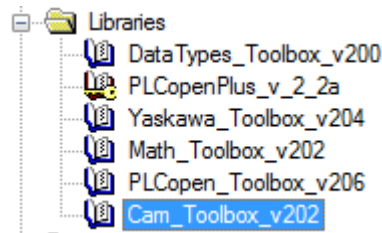
1. Open saved project in MWiec Version 2
  - a. Example shows project name “MWiecProject\_V2”



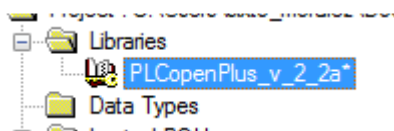
2. Save Project as a different name, preferably something with Version 3
  - a.

3. Delete all MotionWorks IEC Version 2 User Libraries
  - a. Example shows deleting Application Code Libraries from [Yaskawa's Website](#)

1. Before



- 1.
2. After

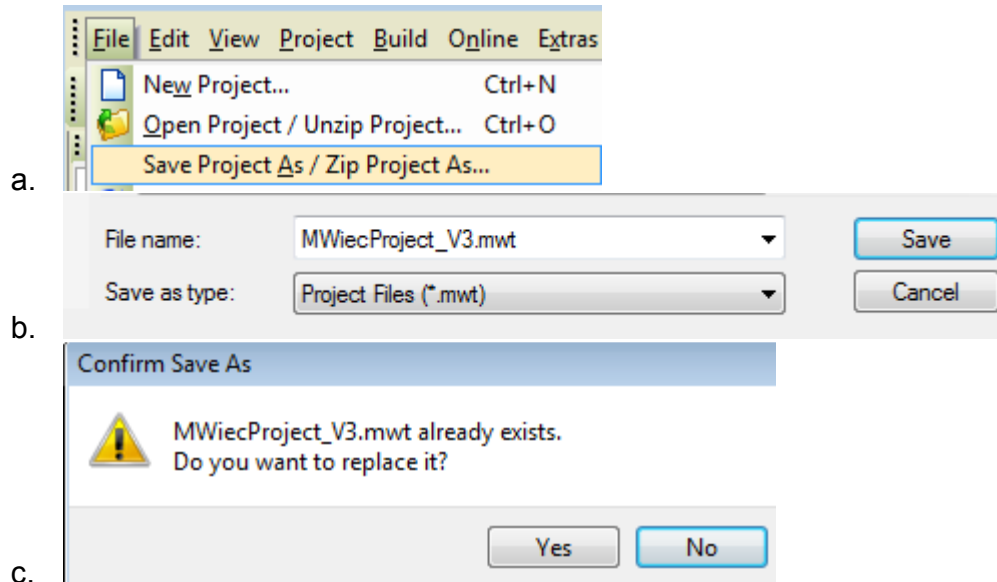


4. Save and click 'yes' to replace project

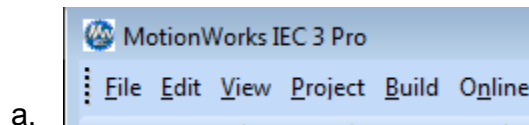
**Title:** Convert a MotionWorks IEC Version 2 Project into Version 3

**Product(s):** MPiec Controllers

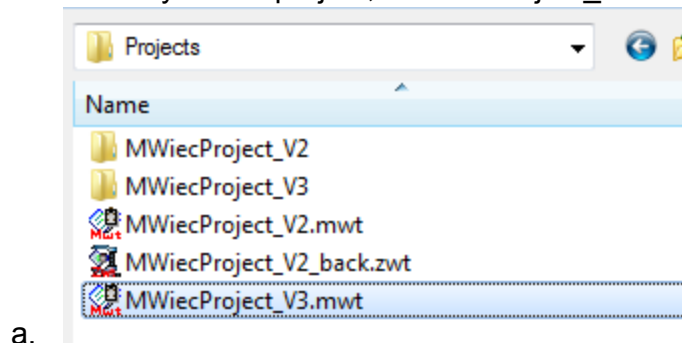
**Doc. No.** CNT-T28IHH



5. Close the MWiec Version 2 Program Software
6. Open MWiec Version 3 Software



7. Open the newly saved project, "MWiecProject\_V3"

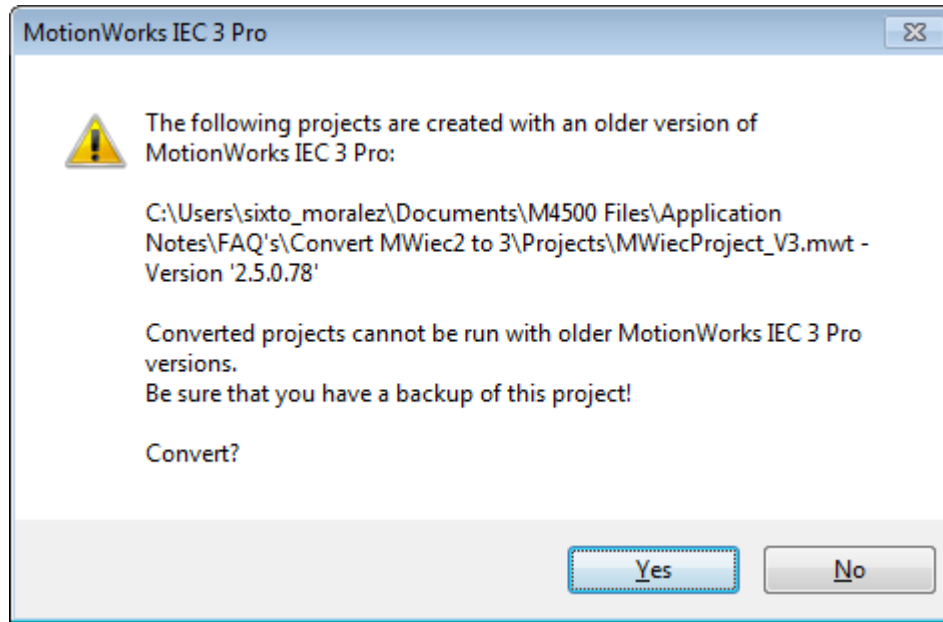


8. Click 'Yes' to convert to project

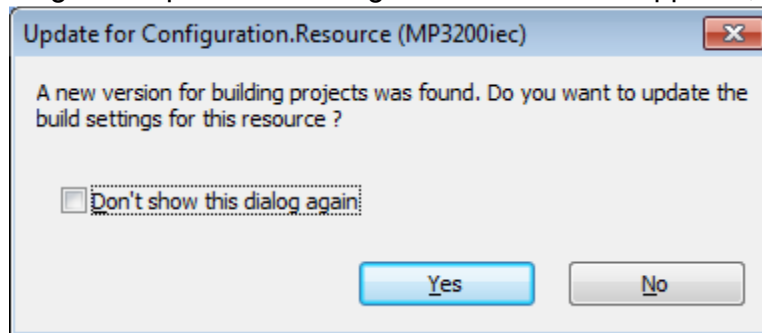
**Title:** Convert a MotionWorks IEC Version 2 Project into Version 3

**Product(s):** MPiec Controllers

**Doc. No.** CNT-T28IHH



- a.
9. If the dialog box “Update for Configuration.Resource” appears, click ‘yes’

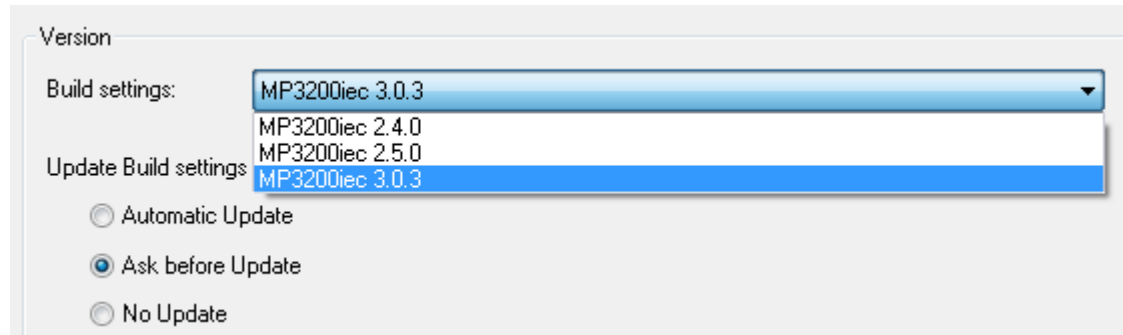


- a.
1. The Build setting allows MWiec Version 3 to download to controller firmware 2.4 and above. Clicking ‘yes’ will default to using controller firmware 3.0.3. The user is responsible for updating the firmware in the controller.

**Title:** Convert a MotionWorks IEC Version 2 Project into Version 3

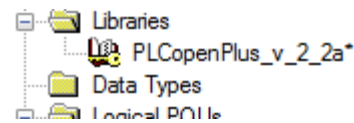
**Product(s):** MPiec Controllers

**Doc. No.** CNT-T28IHH

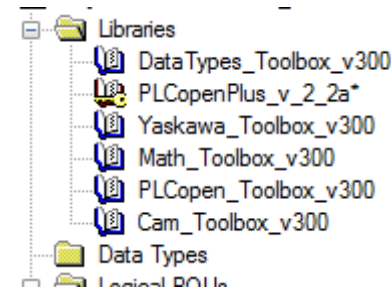


- 2.
10. Add the MWiec Version 3 Libraries that were deleted from version 2

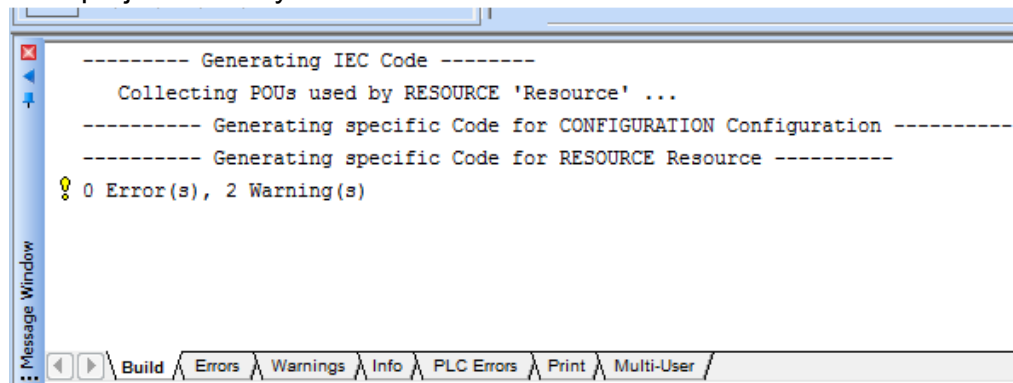
a. Before



b. After



- 1.
11. Compile the project to verify no errors exist



a.

12. Congratulations on a successful conversion