

Subject: Transport Zip File to MW Controller

Product: MotionWorks MPE720

Summary: This document details a step-by-step procedure for transferring a Motion Works/MPE720 program to the File Manager from a zipped file. This may be useful when downloading example program files from the web, and is fast and effective method.

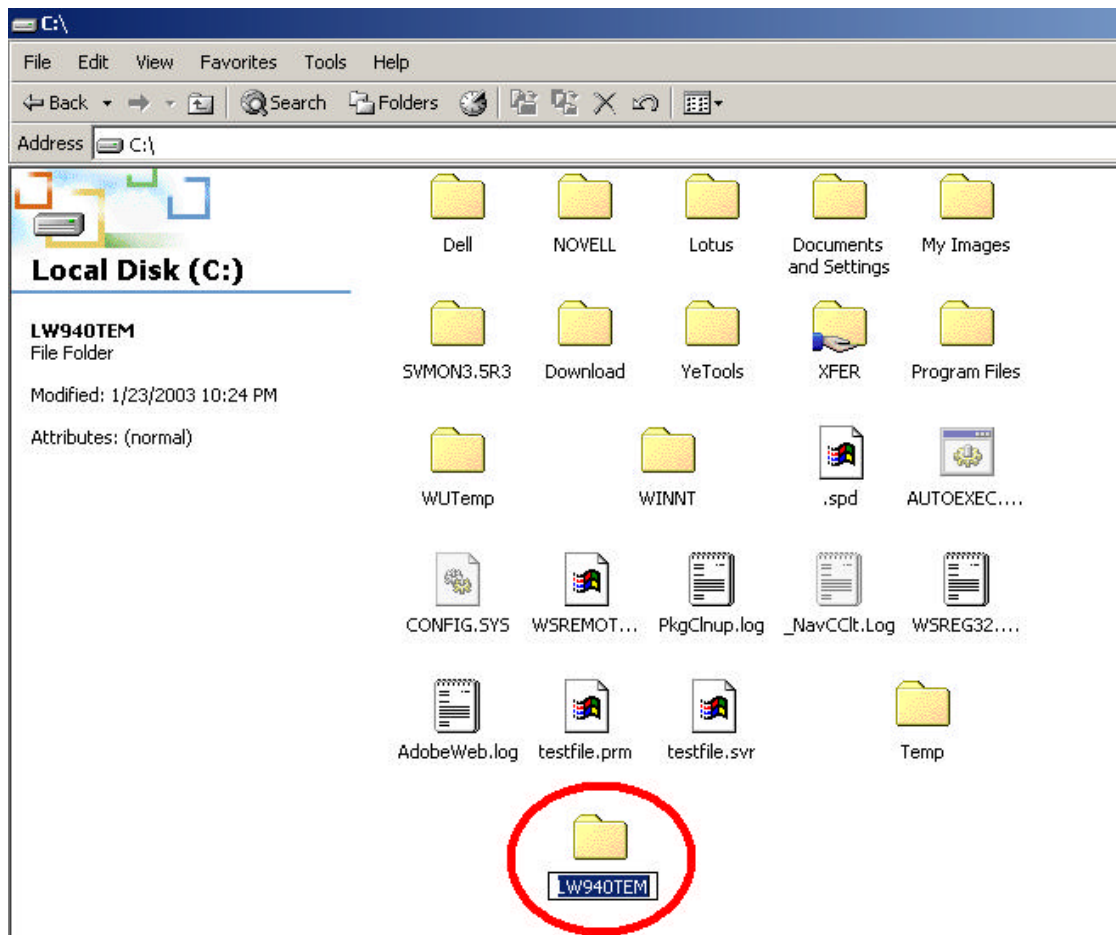
Procedure Overview:

The program files contained in the zip file must first be extracted to an empty folder on the computer's hard drive. Next, the files must be transferred using "All File Transfer" from the File Manager right click menu system. To do this, use the FD-> HD (Floppy Drive to Hard Drive) option (note that the "FD" in this case will later be substituted for Hard drive directory selection).

How to Unzip and Transfer a MW/MPE720 program.

In this example we will unzip and transfer an MP940 program called LW940TEM.

- 1) Under the C:/ root create a new folder called "LW940TEM."

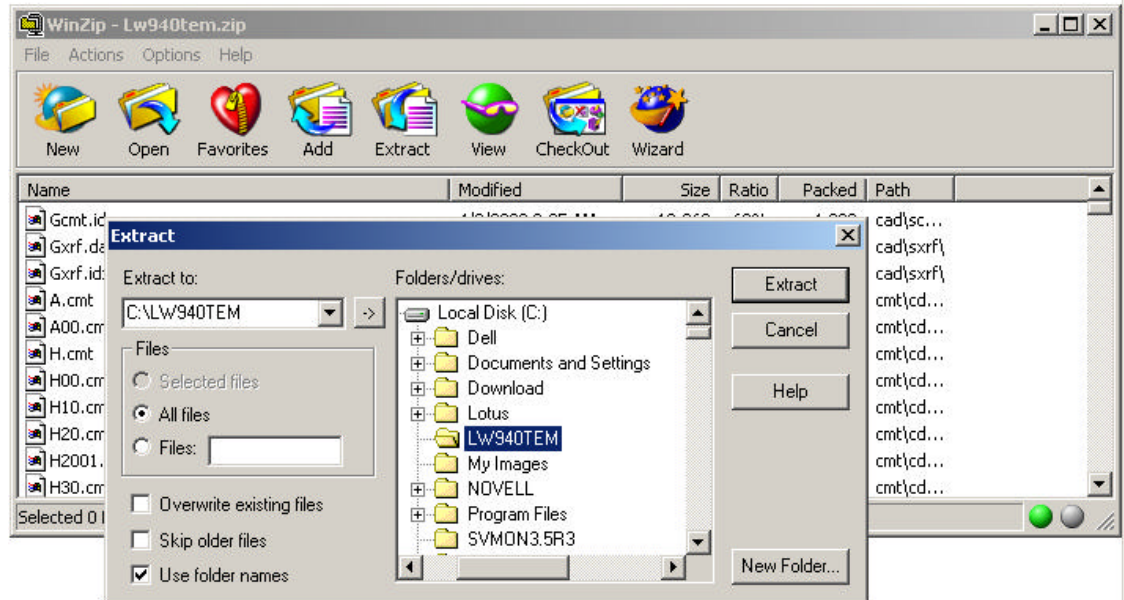


APPLICATION NOTE

MOTION PRODUCT AND ENGINEERING GROUP

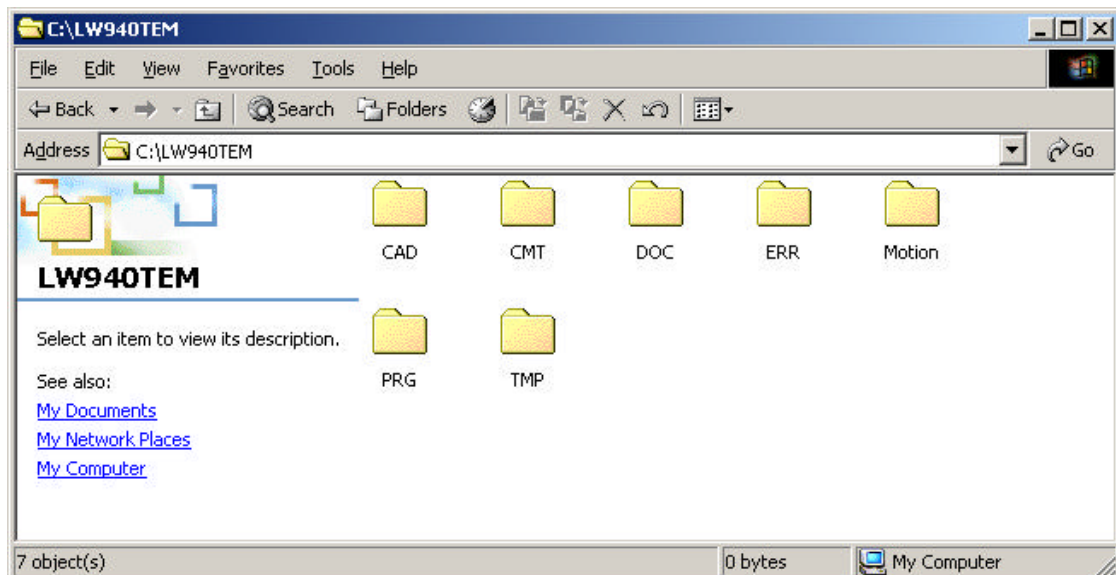


- 2) Extract the contents of the zip file to that sub directory. Be sure "Use folder names" is checked. Also, the sub directory to which the file is being extracted should be empty to prevent extraction errors with Winzip.



- 3) When extracted, be sure the directories and subdirectories inside the "LW940TEM" do not include one called LW940TEM. If so, just copy-paste the program directories up one director level and delete the empty (and now redundant) LW940TEM.

The program directories should look like the following under C:\LW940TEM/ :

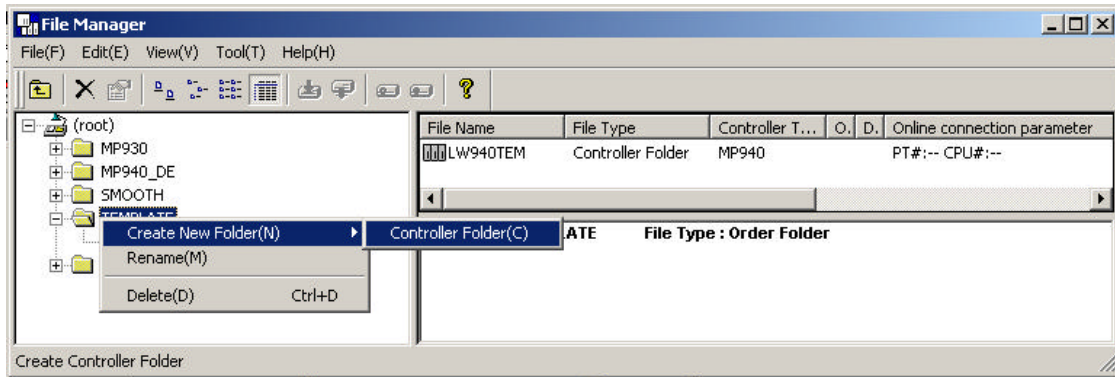


APPLICATION NOTE

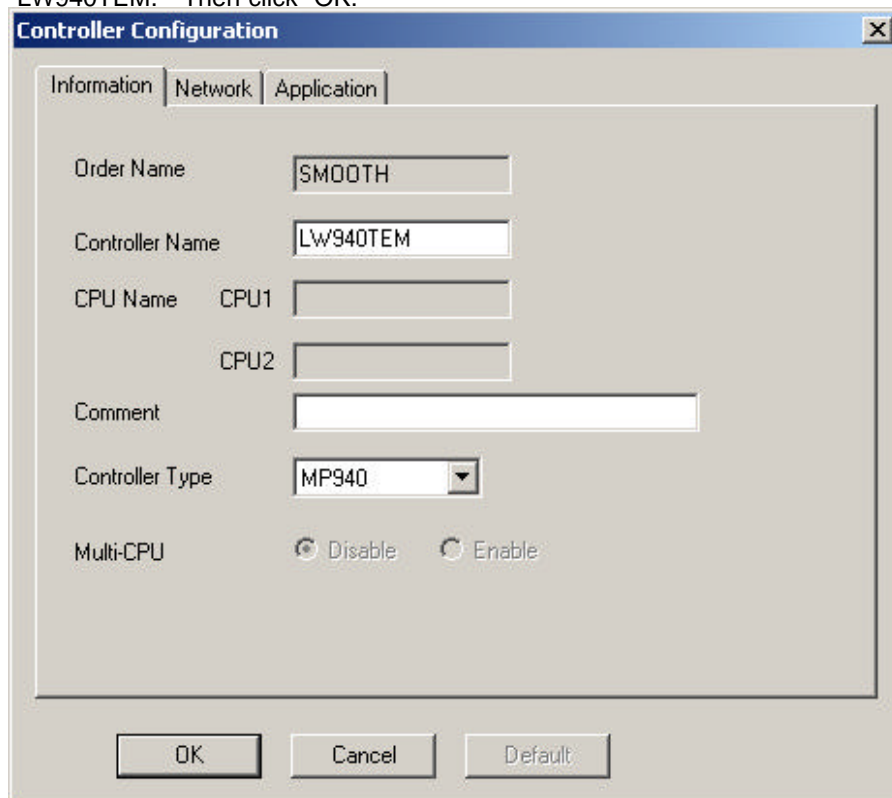
MOTION PRODUCT AND ENGINEERING GROUP



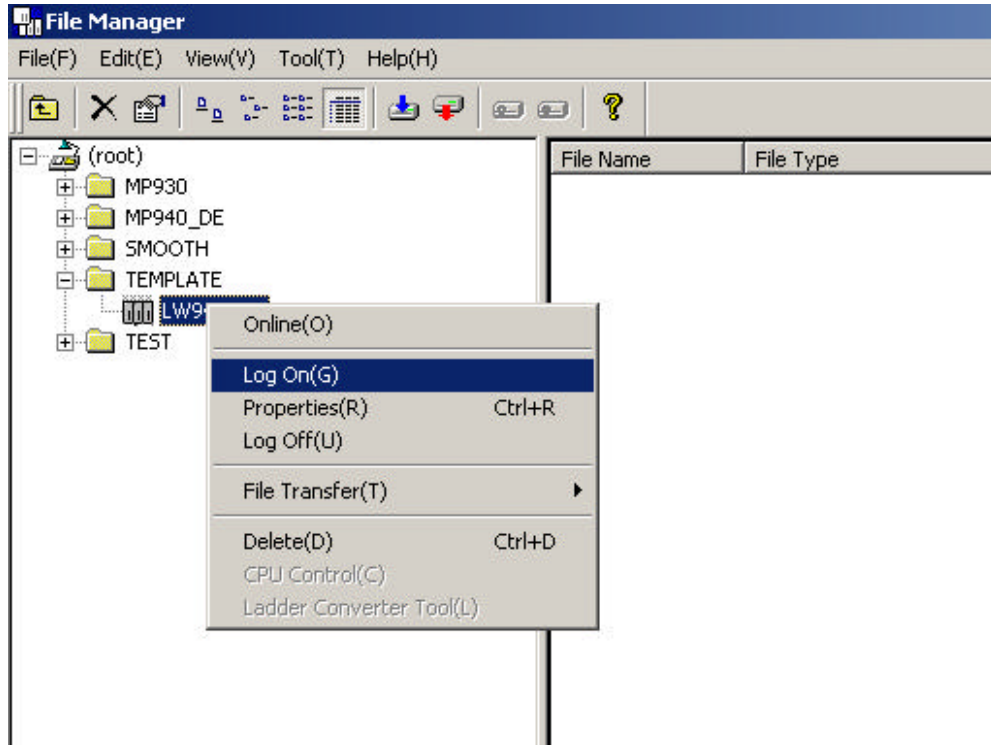
- 4) In MW/MPE720 create a new Controller folder by right clicking on an existing order folder and selecting "Create New Folder, Controller Folder."



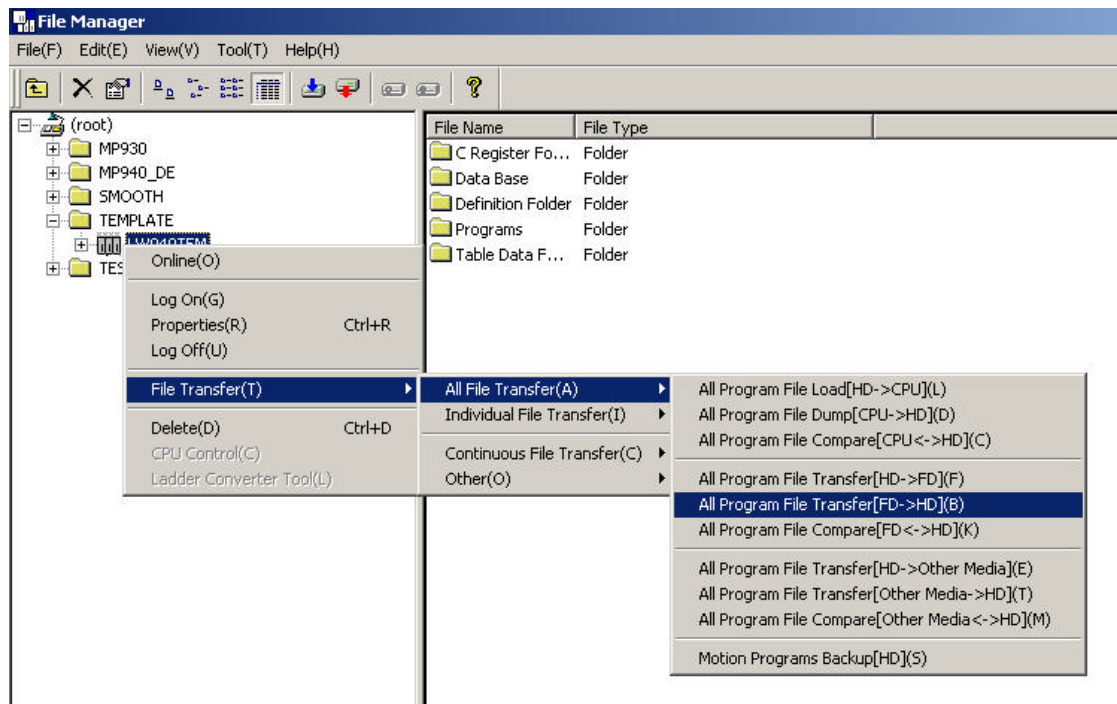
- 5) A "Controller Configuration" dialog box now pops up. First select the "Controller Type" from the drop box. Be sure it is the same controller as the original program code expects it to be – in our case MP940. Then in the text box labeled "Controller Name" enter "LW940TEM." Then click "OK."



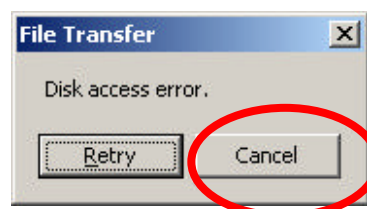
- 6) Right mouse button click on the CPU “LW940TEM” and Select “Log On.”



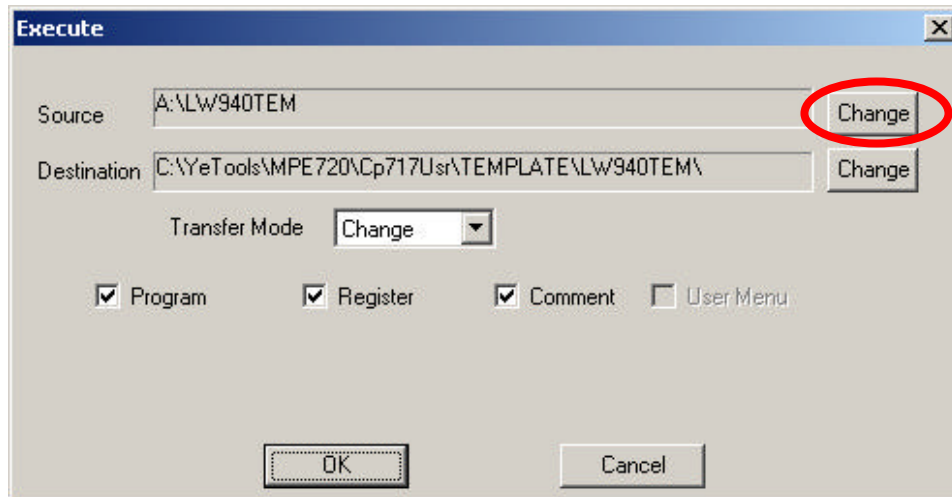
- 7) Right mouse button click on the CPU "LW940TEM" and select "File Transfer, " "All File Transfer , " then "All Program File Transfer FD-> HD"



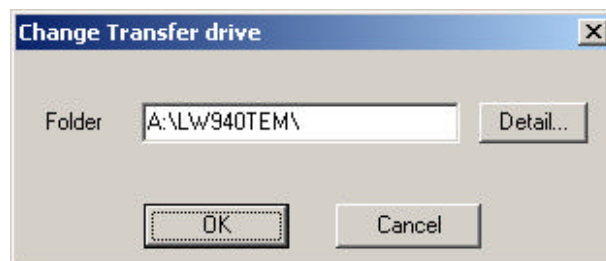
- 8) MW/MPE720 will attempt to access the floppy drive and discover the folder/data (or in this case the floppy disk) is missing. Then a file transfer message box appears. Select cancel. This action will bring up a dialog box to allow the user to select the proper hard drive directory location.



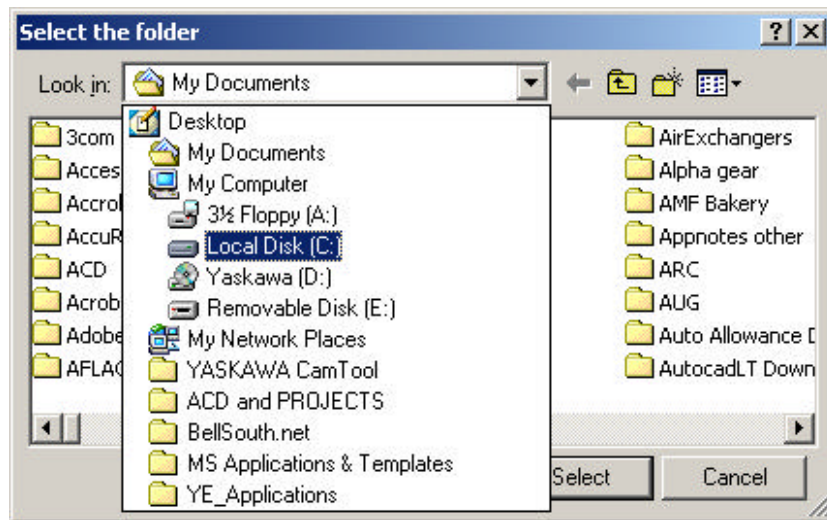
- 9) The All File “Execute” dialog box will appear to allow the user to change the drive and directory location. Note the defaults. The Source is still the floppy disk drive. Transfer Mode drop box should be “change” and the three active check boxes are checked.



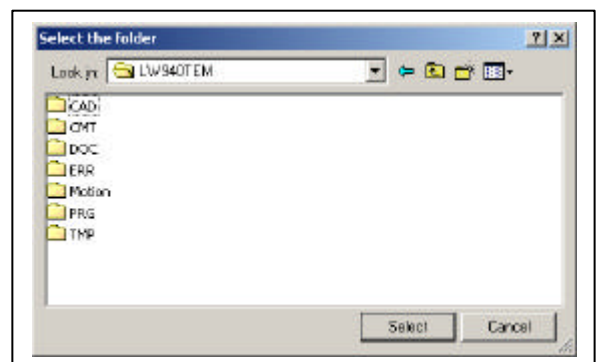
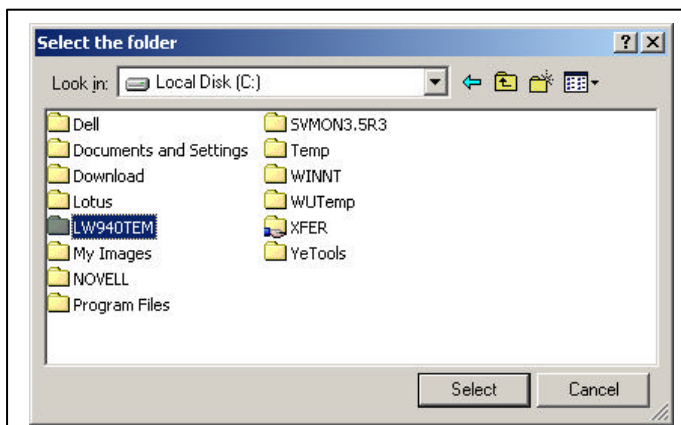
- 10) Click the “Change” button next to the Source text box. The “Change Transfer drive” Dialog box now pops up. Click “Detail..” to browse for hard drive and directory selection.



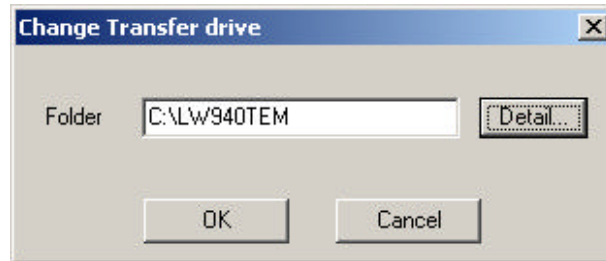
- 11) The “Select the folder” box pops up. Select your Local Disk [C:] from the Look in: drop box.



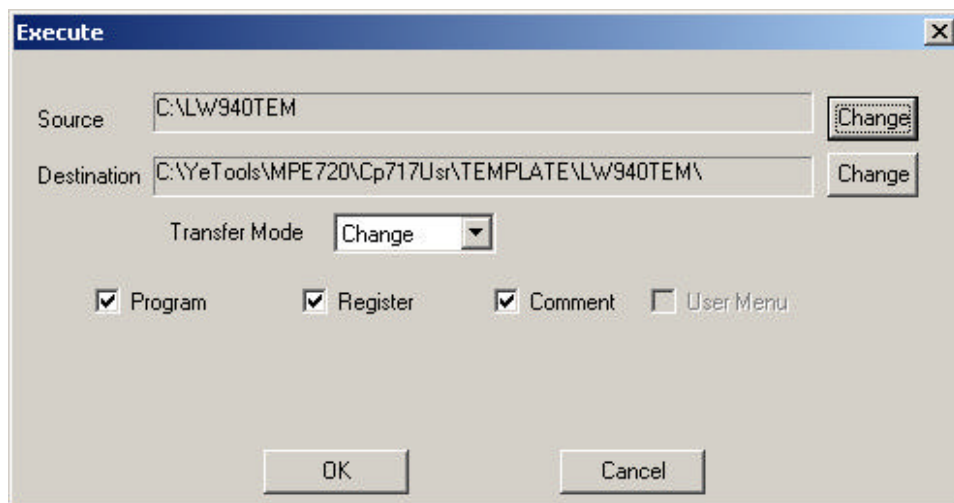
- 12) Double click to open the folder “LW940TEM” that we created and then extract the program into. When the program folders are visible (CAD, CMT, DOC, ect....), push the select button.



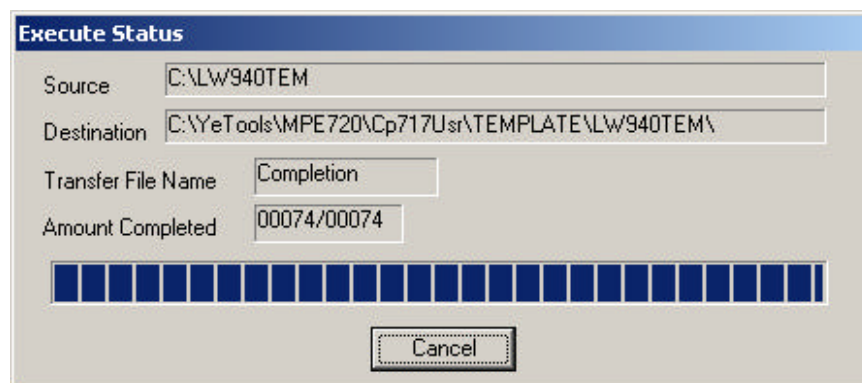
- 13) The Change Transfer drive box gets uncovered, and a new path is in the text box for your inspection. If it is correct click "OK."



- 14) Note that the Execute box has a new "source" path in it.



- 15) Select "OK" to begin the "Transfer."

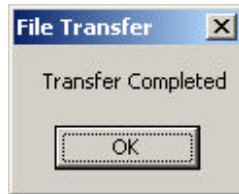


APPLICATION NOTE

MOTION PRODUCT AND ENGINEERING GROUP



- 16) When the transfer is complete the following message box will pop up: Click "OK."



- 17) Close the final dialog box when it appears.