

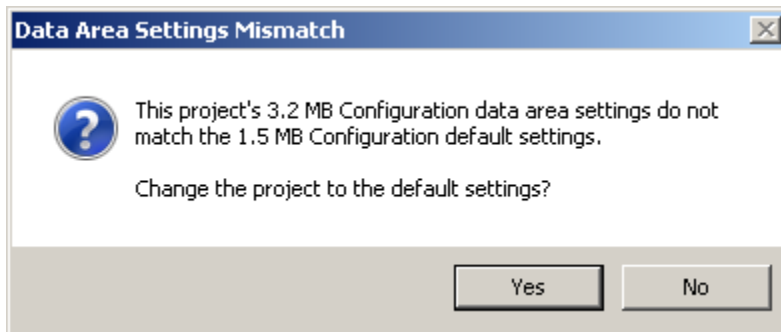


## FAQ# MTN-9DNLL5

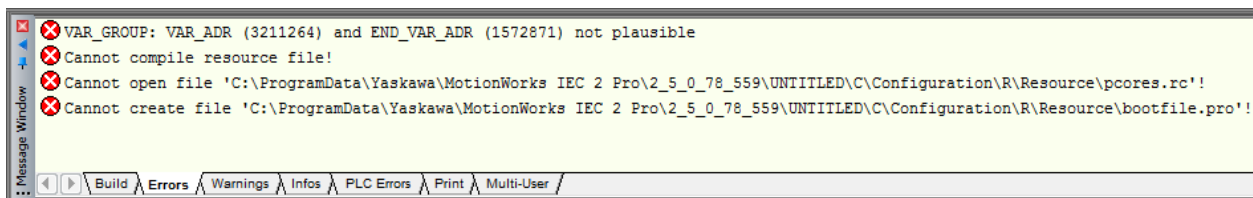
**Question:** After receiving a “Data Area Settings Mismatch” warning when opening the project, compiling the project results in the error “Cannot compile resource file!” and three other compile errors. What causes this error and how is it fixed?

**Answer:**

When opening or starting a new project, the following warning appears.



After clicking no and compiling the project, the following errors occur.



If these errors occur, open the “Change Default Data Area Settings” Menu



First select the controller type corresponding to project’s resource being used. When in the correct resource menu, select 1.5 MB Configuration and then click apply. After applying this configuration, the compile warning will not occur again.

To switch back to the 3.2 MB Configuration, select that option and click apply. (This setting is what causes the Data Area Settings Mismatch warning to appear when opening the project.)

Change Default Data Area Settings

MP2300Siec MP2310iec MP2600iec

Current Settings	Change Options
<p>Non-Retain</p> <p>Start user: 0</p> <p>End user/Start system: 20000</p> <p>End system: 3211262</p> <p>Max: 3211263</p> <p>Retain</p> <p>Start user: 3211264</p> <p>End user/Start system: 3211272</p> <p>End system: 3391476</p> <p>Max: 3391480</p> <p>Minimum Firmware Version: 2.1.0.1</p>	<p>1.5 MB Configuration 3.2 MB Configuration</p> <p>Non-Retain</p> <p>Start user: 0</p> <p>End user/Start system: 20000</p> <p>End system: 1572862</p> <p>Max: 1572863</p> <p>Retain</p> <p>Start user: 1572864</p> <p>End user/Start system: 1572872</p> <p>End system: 1753076</p> <p>Max: 1753080</p> <p>Minimum Firmware Version: 1.0.6.1</p>

OK Cancel Apply