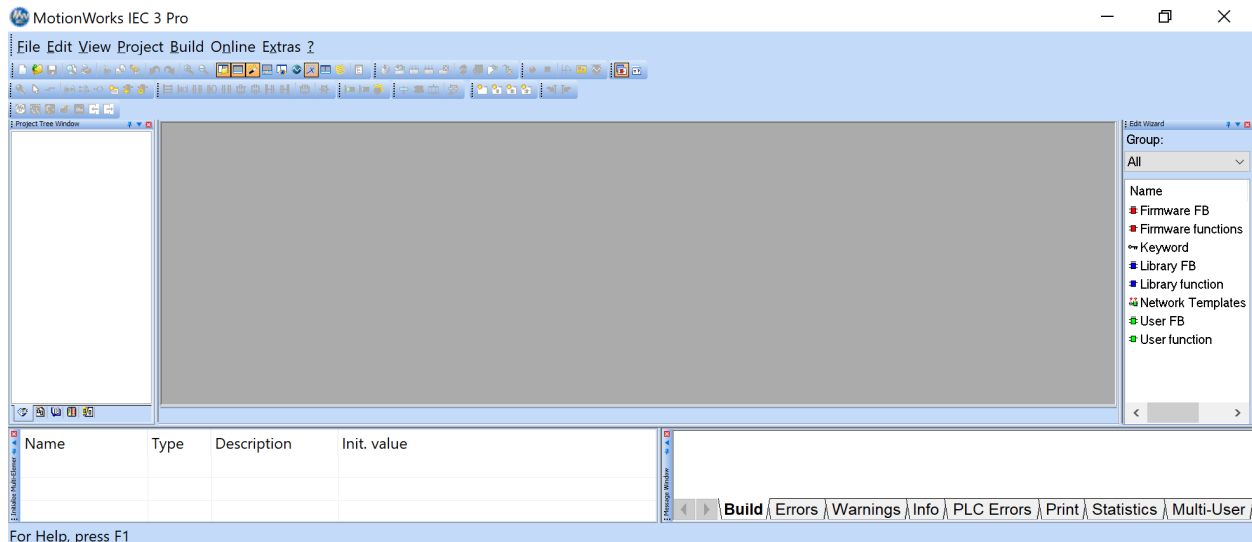


**Title:** Why are the toolbar buttons in MotionWorks IEC smaller than usual?

**Product(s):** MotionWorks IEC

**Doc. No.** CNT-71N53V

On a Windows PC with a high resolution display (>1920 x 1080), the toolbar buttons can be shrunken down as shown in the image below.



This can be fixed by changing the properties of the MotionWorks IEC executable file.

Typically it can be found at:

“C:\Program Files (x86)\Yaskawa\MotionWorks IEC 3 Pro\Mwt.exe”

Once it is found, right-click on it and go to properties.

1. Go to the compatibility tab
2. Find the high DPI settings button
3. Select “override high DPI scaling”
4. Change the dropdown option to “System”
5. Restart MotionWorks IEC

