

Title: How is the Web Server Classic used on the MPiec Controllers**Product(s):** MP3200iec, MP2300iec, MP2600iec,
MP3300iec, Sigma-7Siec**Doc. No.** MTN-97XRJ3

The MPiec Web Server Classic was designed to work only with Microsoft's Internet Explorer (IE) browser. It is the primary web server for firmware versions 3.0 and earlier. In firmware versions 3.2 and later, it can be accessed by pointing IE to the URL <http://xxx.xxx.xxx.xxx/classic>, where xxx.xxx.xxx.xxx is the controller's IP address.

It is possible to view Web Server Classic using Firefox, Chrome, or other browser if an extension is used to that uses IE-compatible rendering within the browser. This document will assume that you are using Internet Explorer (IE).

For a complete chart showing which browsers are supported by which firmware versions see document MTN-8XZQ5D "What web browser technology is supported by the MPiec Series Controllers".

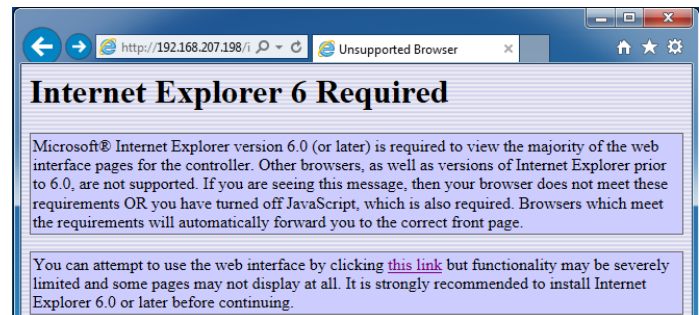
Windows 7 and XP

Internet Explorer version 6 and later have been tested and confirmed to work on either Windows XP (with service pack 3) or Windows 7 (with service pack 1). IE versions 10 and 11 may require some special attention to allow full functionality.

Using Internet Explorer 11

In order to view the controller's web page in Internet Explorer version 11, the individual website or IP address must be added to Compatibility View. This can be done by executing the following steps:

1. Open Internet Explorer and enter the controller's IP address. A screen will be displayed saying you need Internet Explorer version 6 or greater (see



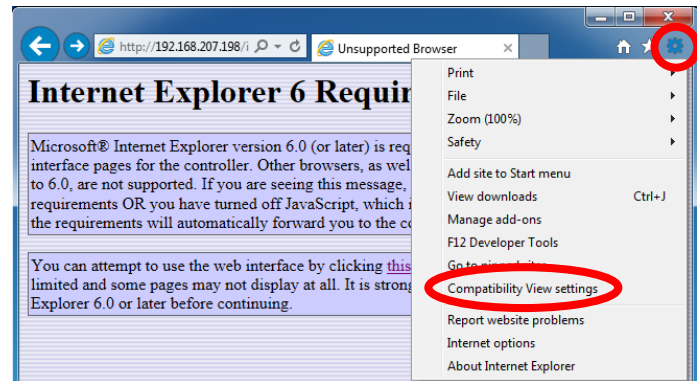
Title: How is the Web Server Classic used on the MPiec Controllers

Product(s): MP3200iec, MP2300iec, MP2600iec,
MP3300iec, Sigma-7Siec

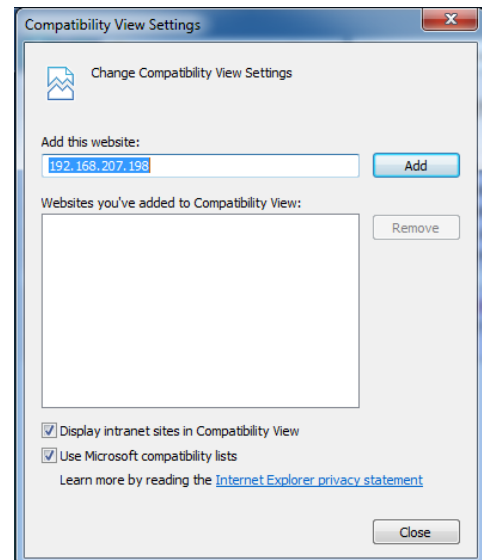
Doc. No. MTN-97XRJ3

2.

Click the gear icon in IE11. In the menu, choose the menu item “Compatibility View settings” (see Figure). This option can also be accessed by pressing the Alt key and choosing it from the Tools menu.



3. In the Compatibility View Setting dialog, the controller’s IP address will automatically populate the “Add this website:” entry field. Click the Add button to add it to the compatibility list. You must do this for every controller you wish to connect to.

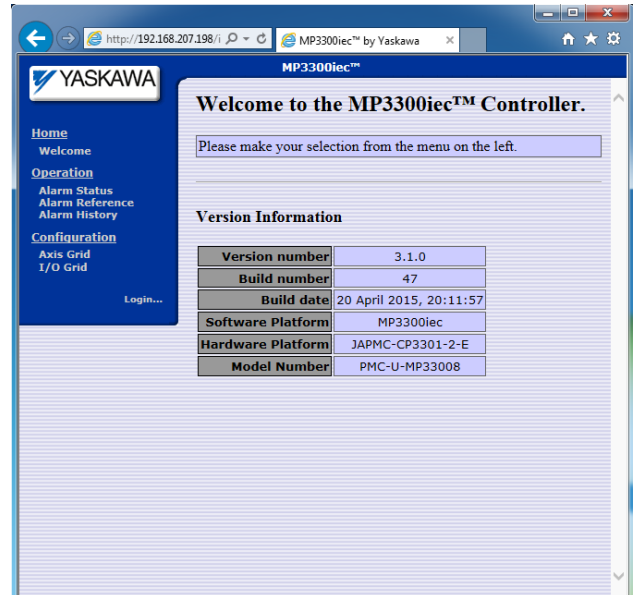


Title: How is the Web Server Classic used on the MPiec Controllers

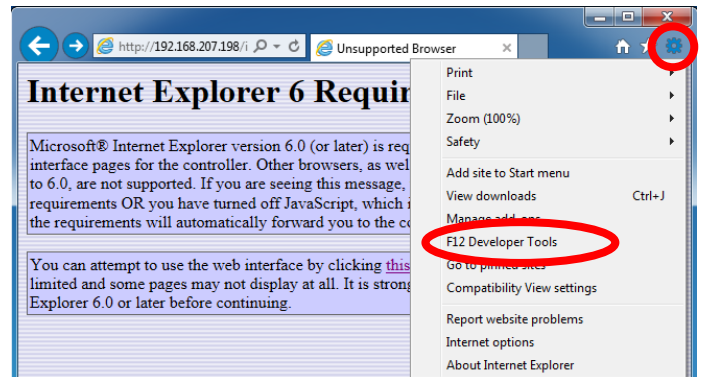
Product(s): MP3200iec, MP2300iec, MP2600iec, MP3300iec, Sigma-7Siec

Doc. No. MTN-97XRJ3

- After closing the Compatibility View Settings, the web server of the controller will be displayed. However, there are some pages that do not work properly. These include the “Set Clock” and the “Update Firmware” pages.



The incorrect functions can be corrected by using the “F12 Developer Tools” function of IE11. This can be launched by clicking on the gear icon and choosing the “F12 Developer Tools” function. You can also open this menu by pressing F12.

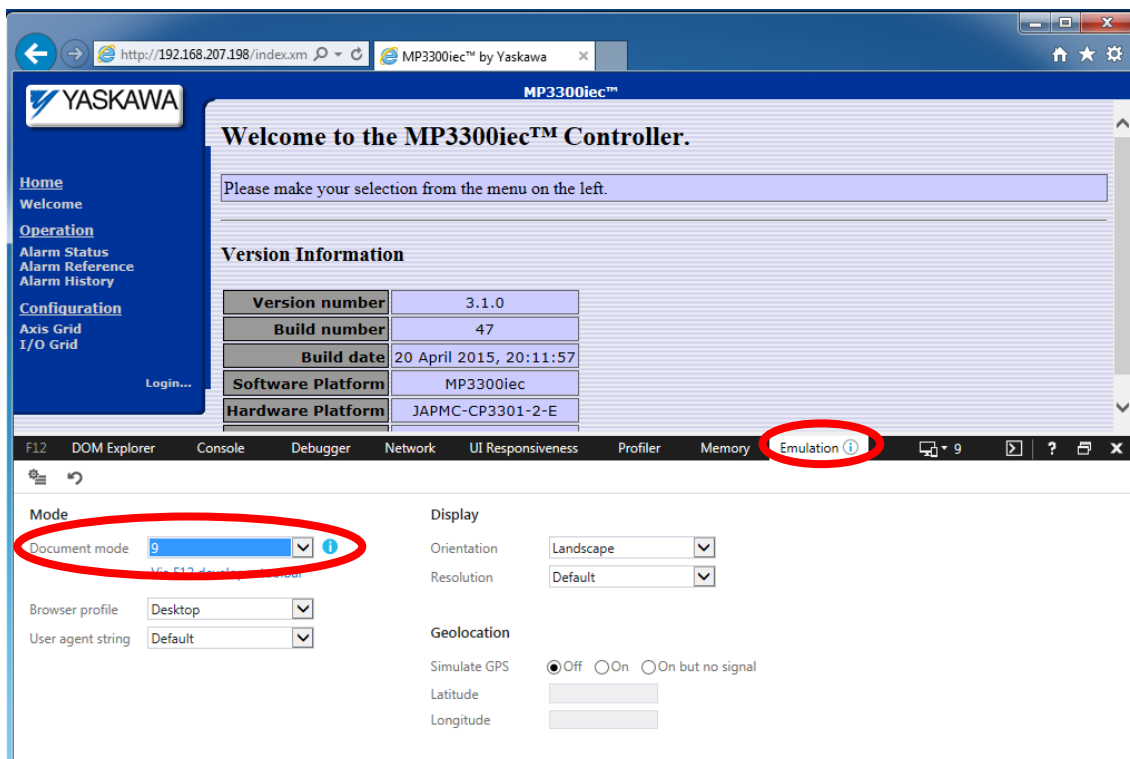


Title: How is the Web Server Classic used on the MPiec Controllers

Product(s): MP3200iec, MP2300iec, MP2600iec,
MP3300iec, Sigma-7Siec

Doc. No. MTN-97XRJ3

5. In the F12 menu, choose the “Emulation” menu option and change the Document mode to “9”. This setting will allow all pages of the Web Server Classic to display correctly. This menu must stay open while you are using these functions. If you close the F12 window then the functions will stop working correctly.



Title: How is the Web Server Classic used on the MPiec Controllers

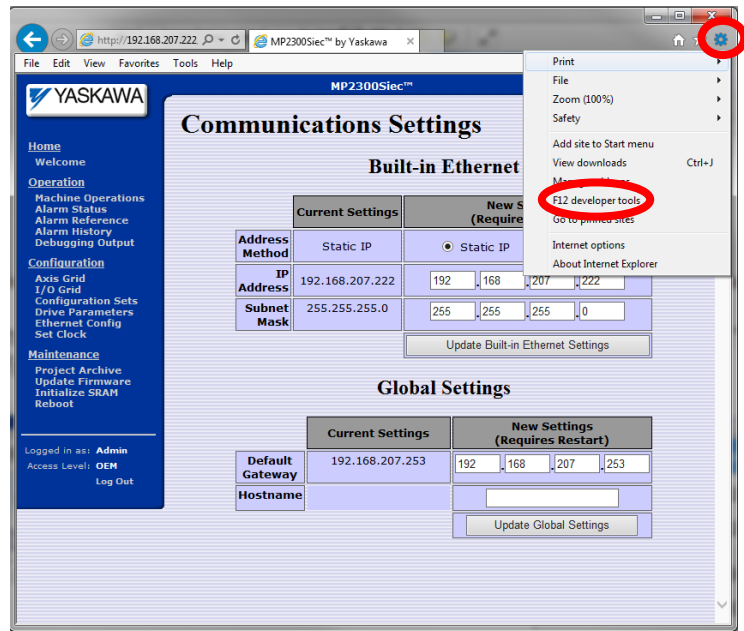
Product(s): MP3200iec, MP2300iec, MP2600iec, MP3300iec, Sigma-7Siec

Doc. No. MTN-97XRJ3

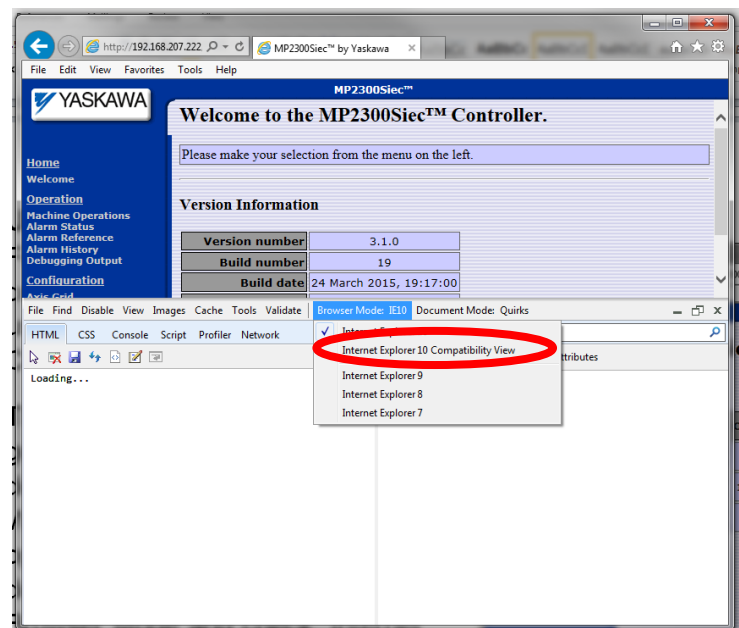
Using Internet Explorer 10

For IE10 to render the pages correctly, it must be configured to use “Internet Explorer 10 Compatibility View”.

This mode can be set by clicking the gear icon and selecting “F12 developer tools” or by pressing F12. When the developer tools open, open the developer tools.



In the developer tools menu, change the Browser Mode to “Internet Explorer 10 Compatibility View.” You will only need to make this setting once on your browser.



Title: How is the Web Server Classic used on the MPiec Controllers

Product(s): MP3200iec, MP2300iec, MP2600iec,
MP3300iec, Sigma-7Siec

Doc. No. MTN-97XRJ3

Windows 8

Windows 8 has two modes, Metro and Desktop. Desktop mode supports legacy applications such as the MPiec Web Server Classic. Follow the instructions for IE10 or IE11 compatibility depending on the version you have.

Web Server Classic is not supported in Metro mode.

Windows 10

Windows 10 is able to access the Web Server Classic by using the “Open with Internet Explorer” feature. This is shown in the figure below.

