

Pn600 (regen capacity) can be modified in three ways:

- 1) From the front panel of the servopack
- 2) From the servopack setup & configuration software "SigmaWin"
- 3) From the controller software "MotionWorks IEC" configuration tool

Below is the procedure for setting this parameter through MotionWorks IEC:

Make sure that the regen wiring has been done as specified in the drive manual. Refer to section 3.7 of the *Sigma-5 Series Servo System User's Manual*:

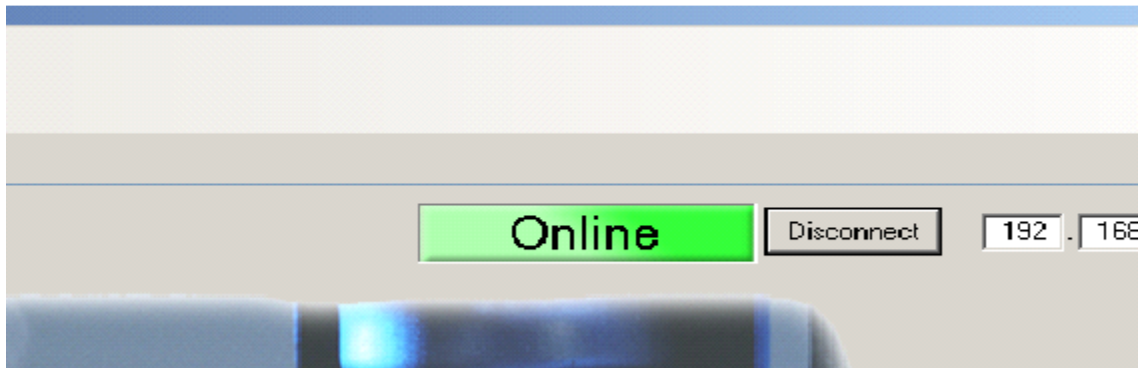
[http://partner.yaskawa.com/site/dmservo.nsf/aa8198da5462fcb86256c59004e4bcb/86256ec30069fdef862573a0005490cd/\\$FILE/Sigma-5%20design%20manual_M-II_R_E.pdf](http://partner.yaskawa.com/site/dmservo.nsf/aa8198da5462fcb86256c59004e4bcb/86256ec30069fdef862573a0005490cd/$FILE/Sigma-5%20design%20manual_M-II_R_E.pdf)

and

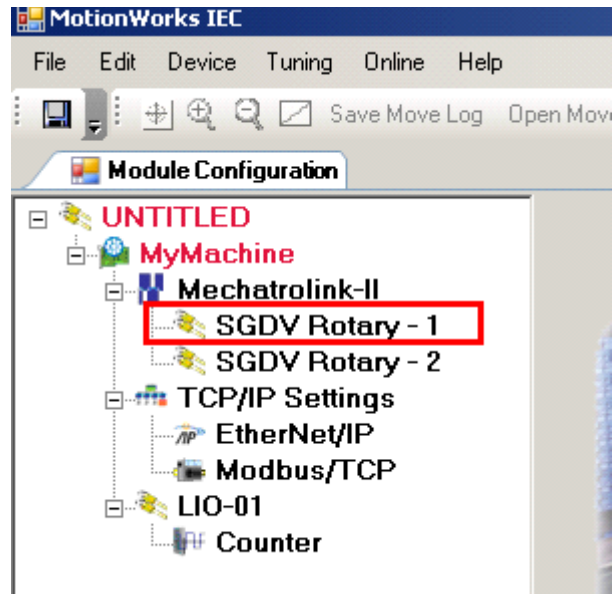
<https://partner.yaskawa.com/site/dmservo.nsf/SearchV/86256EC30069FDEF862574B900723977?OpenDocument&Source=SearchResultPage>

for more details.

Go online with the configuration tool



Once online with the Configuration Tool, select the desired drive on which the regen capacity needs to be set.



Under the Function tab for the axis with the regen resistor, Pn600 can be entered. Note that the value to be entered is in Watts and not in 10 Watts like it is on the Yaskawa drive.

Parameter #	Parameters	Current Value	Units	Min	Max	Default Value
Pn000.0	Rotation Direction	0 - Set counter clockwise as the forw				0 - Set counter clockwise
Pn001.0	Servo OFF or Alarm Stop Mode	0 - Stop motor by Dynamic Brake (DB				0 - Stop motor by Dynamic
Pn001.1	Overtravel Stop Method	0 - Stops the motor by the "Servo OF				0 - Stops the motor by the
Pn001.2	AC/DC Power Input Selection	0 - Input AC Power				0 - Input AC Power
Pn600	Regenerative Resistor Capacity	800	Watts	0	6553E 0	