

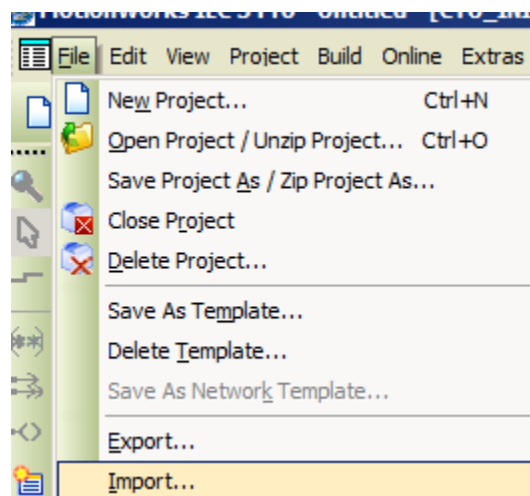
Title: Importing POU's in MotionWorks IEC**Product(s):** MP3200iec, MP2300iec, MP2600iec,
MP3300iec, MotionWorks IEC**Doc. No.** CNT-NMB840

HOW TO IMPORT POU'S

1. In the project tree, select the elements (icons) to import



2. Select 'Import' from the 'File' menu

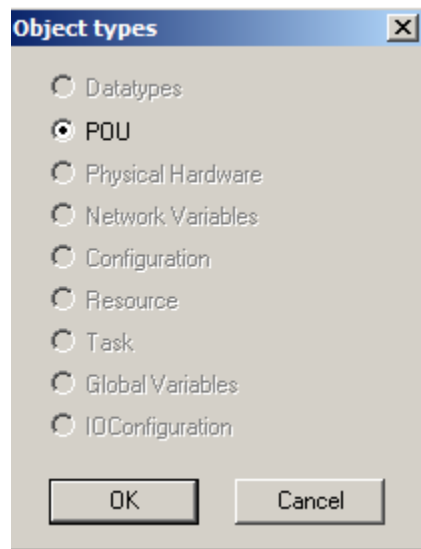


3. Select the entry 'Extended IEC 61131-3 files import' and click OK



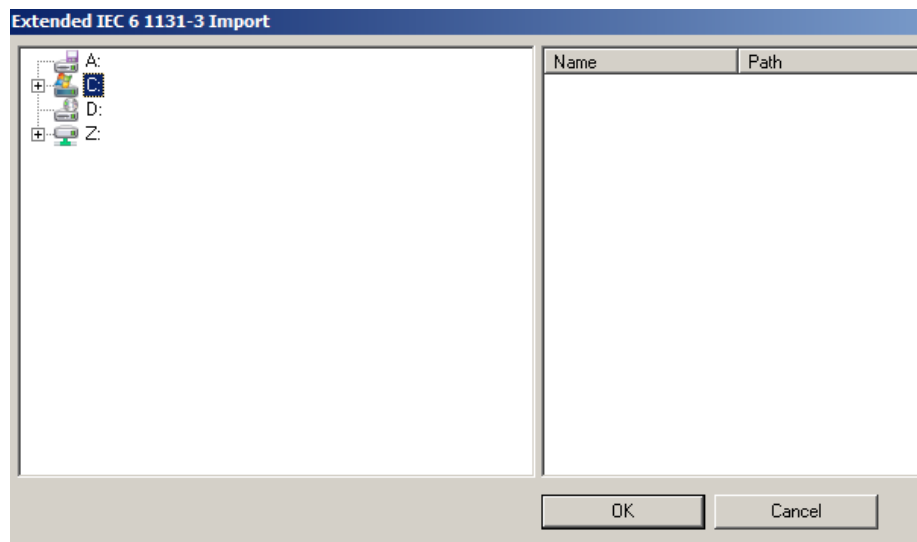
Title: Importing POU's in MotionWorks IEC**Product(s):** MP3200iec, MP2300iec, MP2600iec,
MP3300iec, MotionWorks IEC**Doc. No.** CNT-NMB840

4. Select the object type 'POU' and click 'OK'



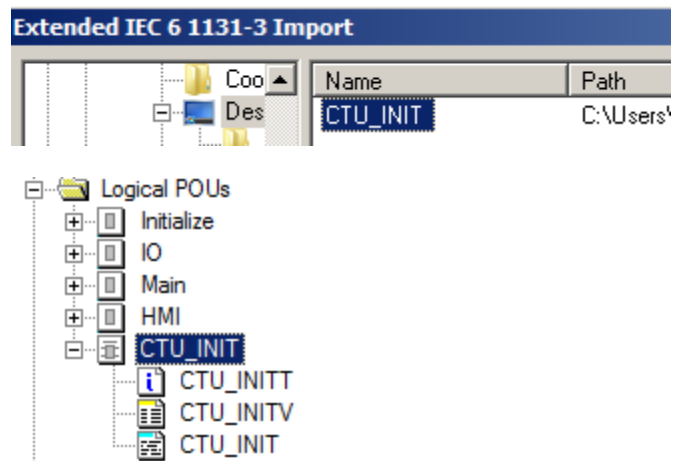
5. Use the tree on the left to select to the desired folder

1. All available objects matching the selection done in the 'Object types' dialog before are displayed on the right



Title: Importing POU's in MotionWorks IEC**Product(s):** MP3200iec, MP2300iec, MP2600iec,
MP3300iec, MotionWorks IEC**Doc. No.** CNT-NMB840

6. Select one or several objects to be imported and click 'OK' . The selected objects are imported. If an object already exists in the project, you are asked whether to overwrite or skip this object.



7. Compile the project and use this POU