

Title: Why is mwctVerify.exe not working for MotionWorks IEC 3.0?

Product(s): MP3200iec, MP2300iec, MP2600iec,
MP3300iec

Doc. No. CNT-8KUF87

Installing MotionWorks IEC 3.0 may result in the following snapshot when trying to run the software. This is due to a missing User Runtime for CodeMeter.

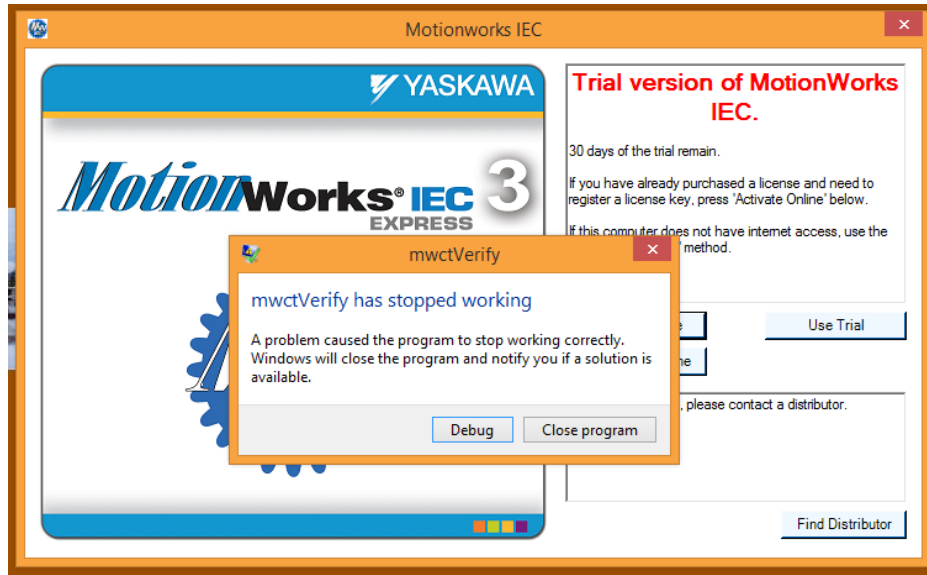


FIGURE 1 MWCTVERIFY.EXE STOPPED WORKING SCREENSHOT

Clicking on Debug will show the following in a command prompt:

```
C:\Program Files (x86)\Yaskawa\MotionWorks IEC 3 Express>mwctVerify
```

```
Unhandled Exception: System.Reflection.TargetInvocationException: Exception has been thrown by the target of an invocation. --->
System.DllNotFoundException: Unable to load DLL 'WibuCm64.dll': The specified module could not be found. (Exception from HRESULT:
0x8007007E) at CodeMeter.?.CmValidateSignature(Byte[] A_0, Byte[] A_1, UInt32 A_2, Byte[]
A_3, UInt32 A_4)
    at CodeMeter.?.?(CmAuthenticate A_0, Byte[] A_1, Byte[] A_2)
    at CodeMeter.?.?(CmAuthenticate A_0, Byte[] A_1, Byte[] A_2)
    --- End of inner exception stack trace ---
    at System.RuntimeMethodHandle.InvokeMethod(Object target, Object[] arguments,
Signature sig, Boolean constructor)
    at System.Reflection.RuntimeMethodInfo.UnsafeInvokeInternal(Object obj, Objec
t[] parameters, Object[] arguments)
    at System.Reflection.RuntimeMethodInfo.Invoke(Object obj, BindingFlags invoke
Attr, Binder binder, Object[] parameters, CultureInfo culture)
    at System.Reflection.MethodBase.Invoke(Object obj, Object[] parameters)
    at ()
    at com.wibu.xpm.AxpNet.pp.?(Int32 A_0)
    at com.wibu.xpm.AxpNet.?.?(Boolean A_0, Int32 A_1, Int32 A_2, Boolean A_3, In
t32[]& A_4, String[]& A_5)
    at com.wibu.xpm.AxpNet.?.?(Boolean A_0, Int32[]& A_1, String[]& A_2)
    at com.wibu.xpm.AxpNet.pp.az(Int32 A_0, Byte[] A_1, Type A_2, Type[] A_3, Typ
e A_4, MethodBase A_5)
    at VerifyApp.Program.Main(String[] args)
```

Title: Why is mwctVerify.exe not working for MotionWorks IEC 3.0?

Product(s): MP3200iec, MP2300iec, MP2600iec,
MP3300iec

Doc. No. CNT-8KUF87


If after installing and running MotionWorks IEC 3.0 results in the above screenshot, follow these steps to remedy the issue:

Steps

1. Verify the anti-virus software has EXCLUDED the following file types:
 - a. cic, dbd, dip, dit, diw, st1, sto
 - b. See "[Why does MotionWorks IEC seem to "hang" when opening a project or creating a new project?](#)"
2. Download the User Runtime for the proper Operating System
 - a. Link: <https://www.wibu.com/downloads-user-software.html>
 - b. Example for Windows 8.1

CodeMeter User Download

CodeMeter User Runtime for Windows

Version 5.21b | 31.03.2015 | multilanguage download  (24.15 MB)

Current selection: Windows 64-bit



i.

Title: Why is mwctVerify.exe not working for MotionWorks IEC 3.0?

Product(s): MP3200iec, MP2300iec, MP2600iec, MP3300iec

Doc. No. CNT-8KUF87

Appendix

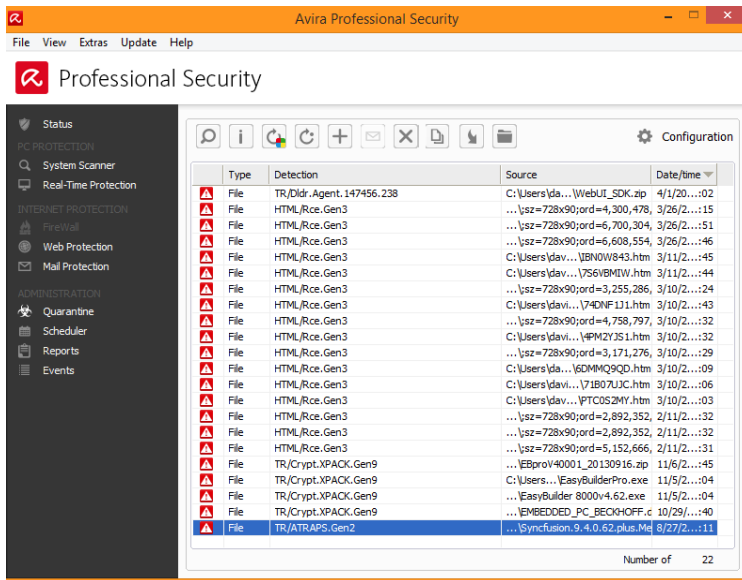


FIGURE 2 ANTI-VIRUS DOES NOT QUARANTINE MWCTVERIFY.EXE

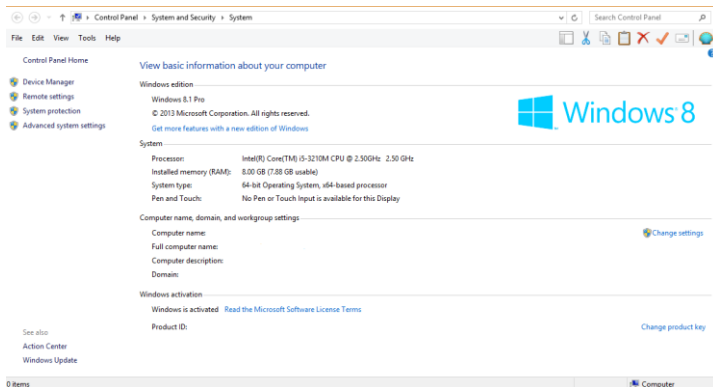


FIGURE 3 WINDOWS 8.1 SCREEN SHOT

- Issue not finding the “wibucm64.dll” file on the C: drive even though the service is running

