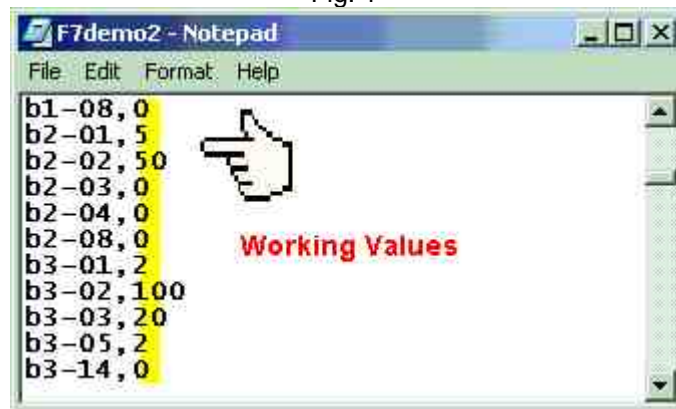


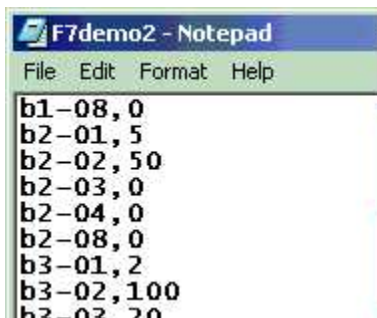
When viewing and editing .PARMS files from alternate programs, caution must be taken **NOT TO** change the working values (Fig. 1) in the file to unrecognized settings for DriveWizard.

Fig. 1

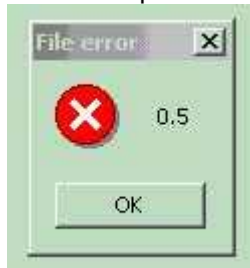


See below for known examples that will cause the "File Error" code condition:

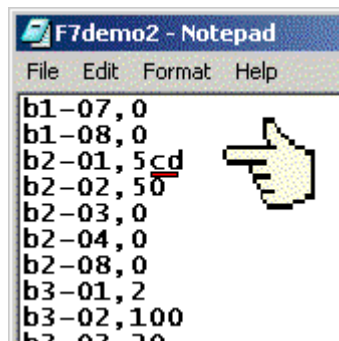
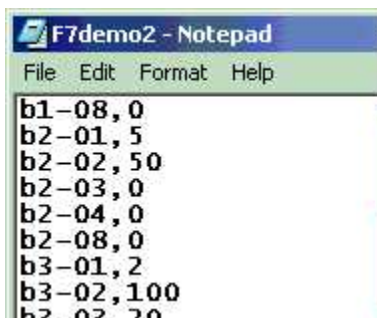
**CASE 1:**



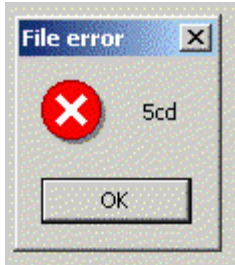
If a decimal point is added to the working value..... the following is shown.



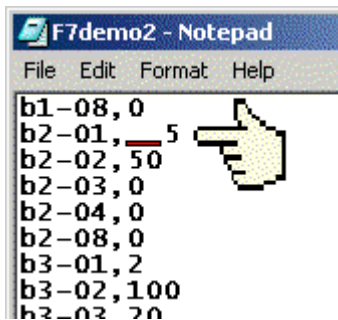
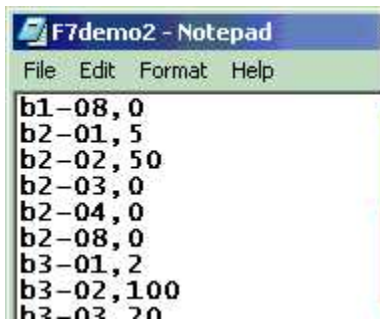
**CASE 2:**



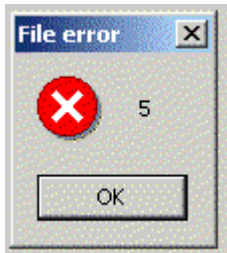
If non-numerical data is added to the working value.....the following is shown.



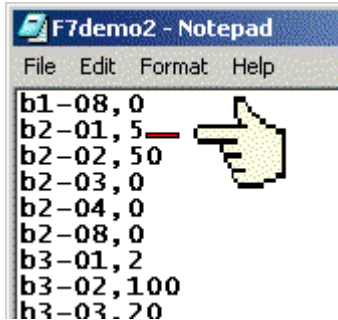
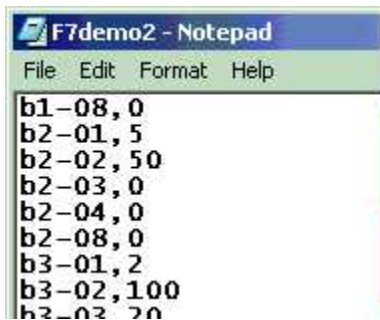
**CASE 3:**



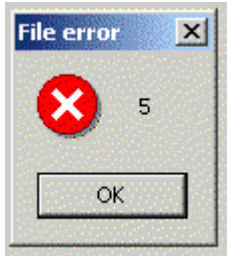
If spaces are added before the working data.....the following is shown.



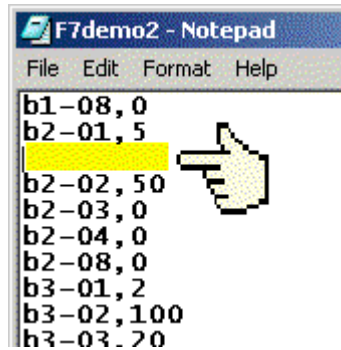
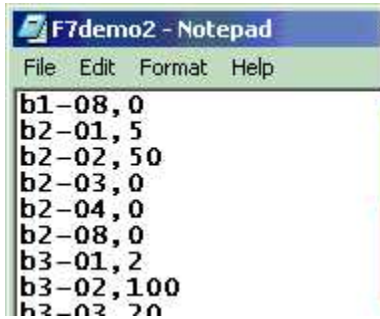
**CASE 4:**



If spaces are added after the working data.....the following is shown.



CASE 5:



If spacing is added between parameter values.....the following is shown.

