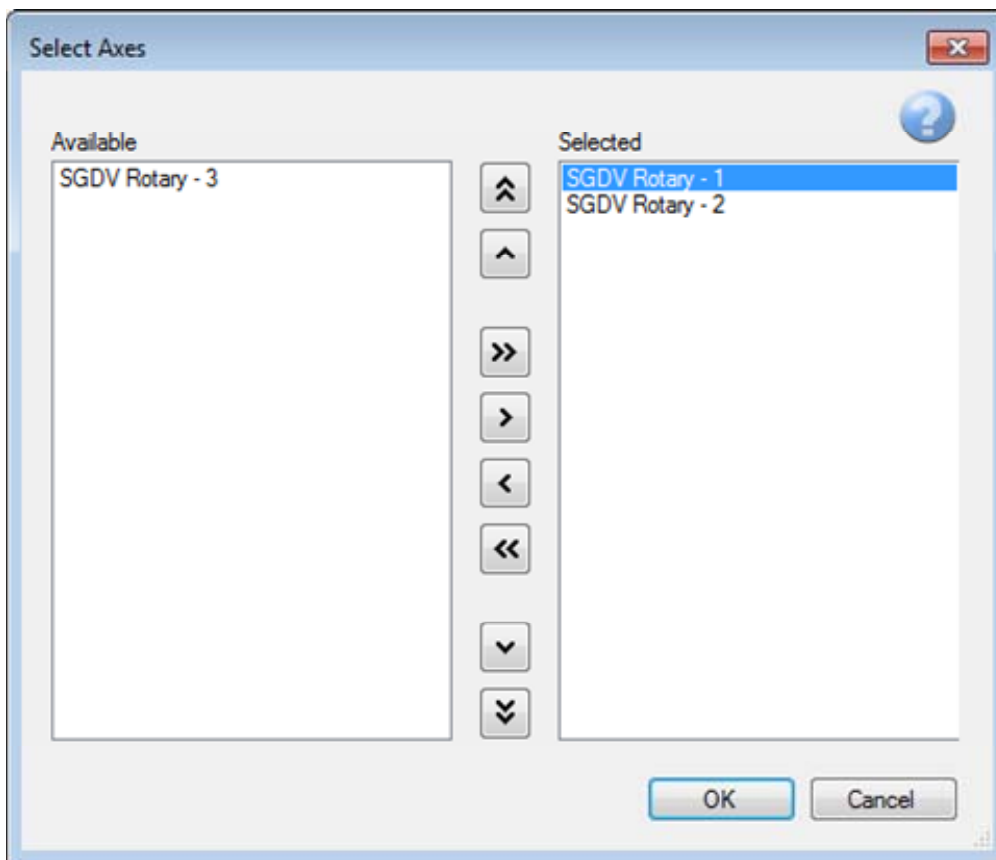


Use the “Mechtrolink / Set Parameters on Multiple Axes” tab to both view and change parameters on multiple axes.

First, press the 'Select Axes' button.



In the Select Axes Dialog, use the left and right arrows to select the axes for comparison. The double right and left arrows will select or remove all the axes.



The order of the selected axes determines the column order in the parameter grid. Use the up and down arrows to change the column order. The double up and down arrows will move the selected axis to the top or bottom of the list.

Press 'OK' when the selected are arranged in the desired order.

By default, all parameters are shown in the grid.

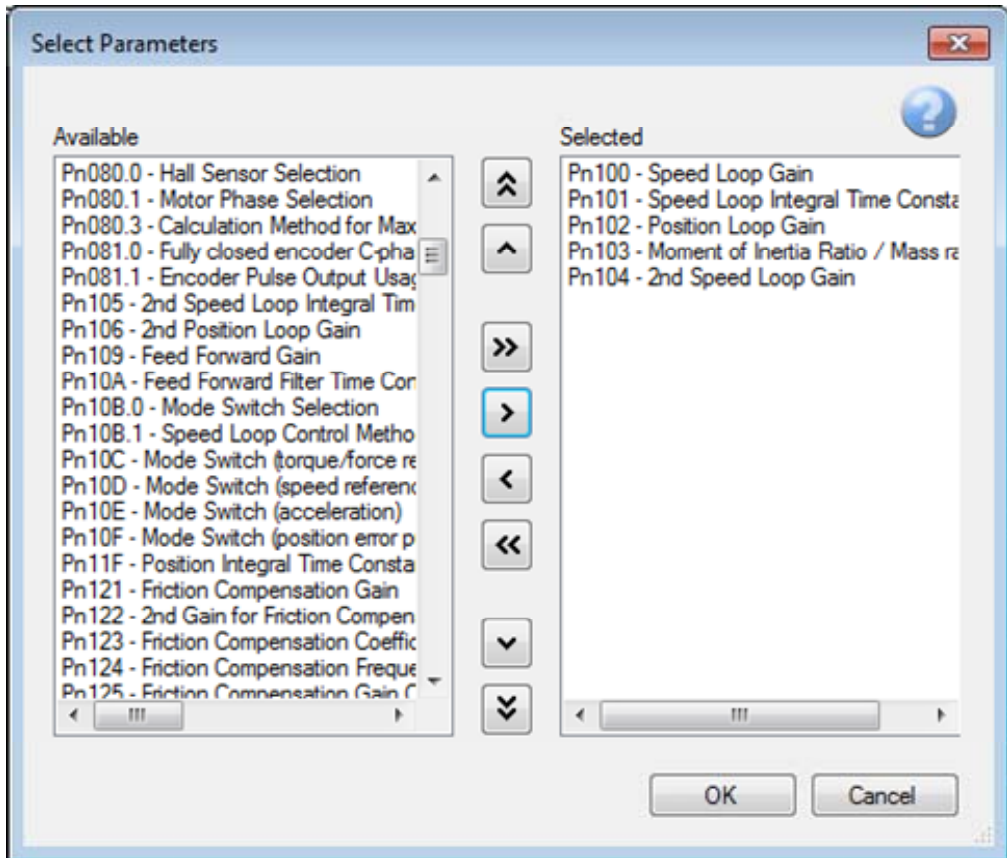
Mechatrolink Set Parameters on Multiple Axes

Select Axes Select Parameters

232 Parameters Selected 2 Axes Selected

Parameter #	Parameter	Units	Value	SGDV Rotary - 1	SGDV I
Pn000.0	Rotation Direction		0 - Set counter clockwis	0 - Set counter clockwis	0 - Set
Pn001.0	Servo OFF or Alarm Stop Mode		0 - Stop motor by Dynam	0 - Stop motor by Dynam	0 - Stop
Pn001.1	Overtravel Stop Method		1 - Decelerate motor to s	1 - Decelerate motor to s	1 - Decel
Pn001.2	AC/DC Power Input Selection		0 - Input AC Power	0 - Input AC Power	0 - Inpu
Pn002.2	Absolute Encoder Usage		0 - Use absolute encode	0 - Use absolute encode	0 - Use
Pn002.3	Full-Closed Encoder Selection		0 - Unused	0 - Unused	0 - Unu
Pn006.0	Analog Monitor 1		2 - Torque/Thrust Refer	2 - Torque/Thrust Refer	2 - Tor
Pn007.0	Analog Monitor 2		0 - Motor Speed [1V / 10	0 - Motor Speed [1V / 10	0 - Mot
Pn008.0	Low Battery Voltage Alarm/Warning		0 - Display Alarm for low	0 - Display Alarm for low	0 - Disp
Pn008.1	Function Selection for Insufficient Voltage		0 - Disables detection of	0 - Disables detection of	0 - Disa
Pn008.2	Warning Detection Selection		0 - Detects warning	0 - Detects warning	0 - Dete
Pn009.1	Current Control Method		1 - Current Control Meth	1 - Current Control Meth	1 - Curr
Pn009.2	Speed Detection Method		0 - Speed Detection 1 [di	0 - Speed Detection 1 [di	0 - Spe
Pn00B.0	Parameter Display		0 - Setup Parameters	0 - Setup Parameters	0 - Setu
Pn00B.1	Alarm G2 Stop Method		0 - Stops the motor by se	0 - Stops the motor by se	0 - Stop
Pn00B.2	Power Selection		1 - Apply Single Phase F	1 - Apply Single Phase F	1 - App
Pn00B.3	Feedback Option Module Usage		0 - Use external encoder	0 - Use external encoder	0 - Use
Pn00C.0	Test without Motor		0 - Disabled	0 - Disabled	0 - Disa
Pn00C.1	Encoder Resolution for Test without Motor		0 - 13 bits	0 - 13 bits	0 - 13 b
Pn00C.2	Encoder Type for Test without Motor		0 - Incremental	0 - Incremental	0 - Incr

For ease of comparison, press the 'Select Parameters' button to choose a subset of the parameters to compare.



Similar to the 'Select Axes' dialog box, use the right and left arrows to select or remove parameters, and use the up and down arrows to change the order of the selected parameters.

Press 'OK' when the selected parameters are in the desired order.

Mechatrolink Set Parameters on Multiple Axes

Select Axes Select Parameters

5 Parameters Selected

Parameter #	Parameter	Units	Value	2 Axes Selected	
				SGDV Rotary - 1	SGDV P
Pn100	Speed Loop Gain	Hz		40.0	
Pn101	Speed Loop Integral Time Constant	ms		20.00	
Pn102	Position Loop Gain	Hz		40.0	
Pn103	Moment of Inertia Ratio / Mass ratio	%		100	
Pn104	2nd Speed Loop Gain	Hz	40.0		40.0

Notice that when the values do not match the value column is blank, which helps to quickly identify differences.

To set parameters on multiple axes, simply type in the value column and press enter.