

Title: How is an MPiec controller configured to communicate with an MLX200 robot controller?

Product(s): MP3200iec, MP3300iec

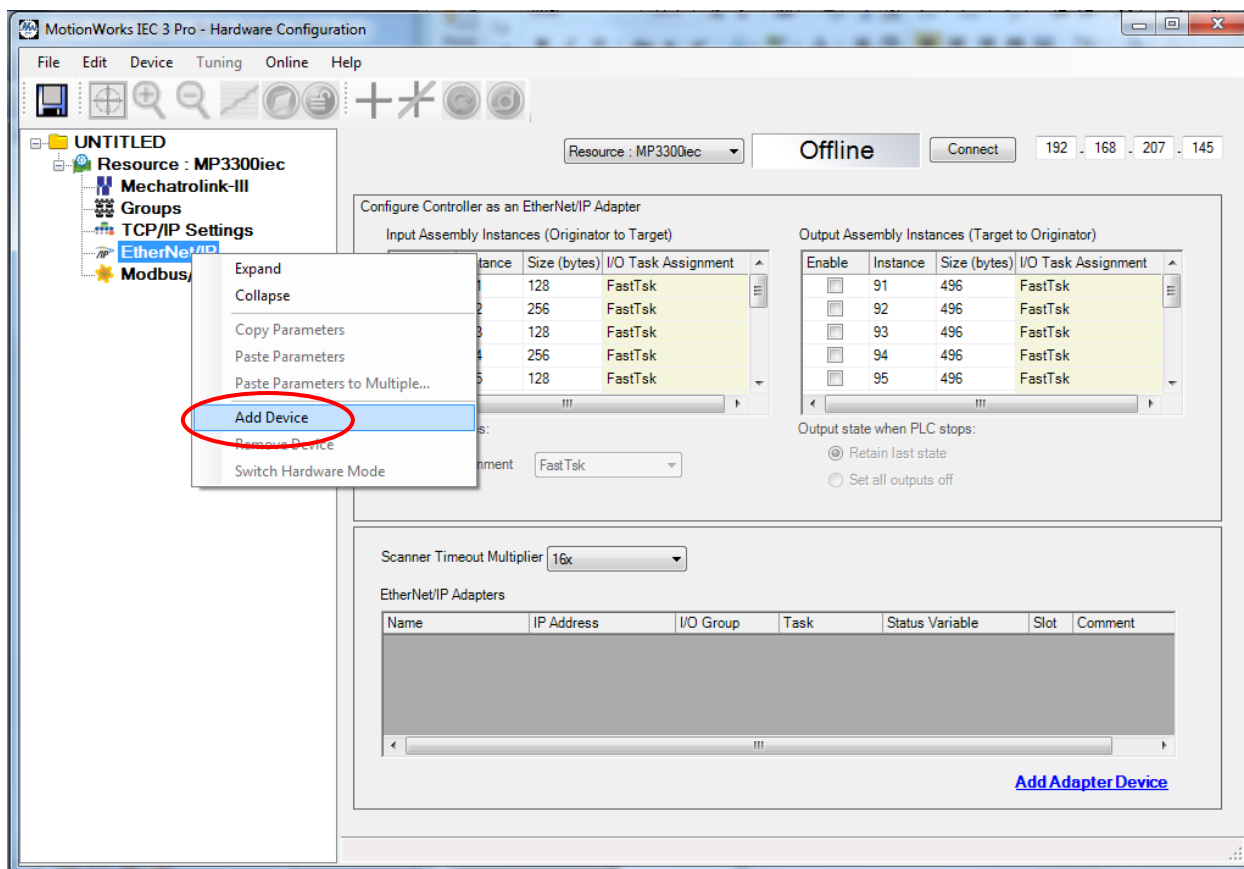
DOC. NO. CNT-BO2L4G

To configure an MPiec controller to communicate with an MLX-200 robot controller, the following steps are required:

- 1) An MLX200 EtherNet/IP device must be added
- 2) An MLX group must be created
- 3) The MLX_Driver function block must be added to the project code.

Add a MLX200 EtherNet/IP device:

Open Hardware Configuration, right click on EtherNet/IP in the project tree and select 'Add Device.'

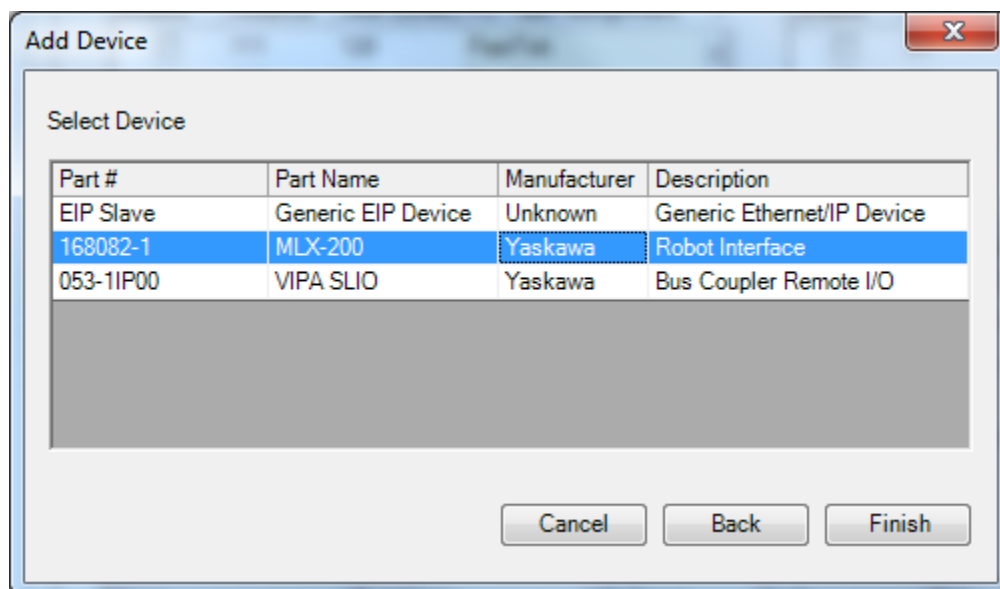


Title: How is an MPiec controller configured to communicate with an MLX200 robot controller?

Product(s): MP3200iec, MP3300iec

DOC. NO. CNT-BO2L4G

In the 'Add Device' dialog, select the Part Name MLX-200 and choose Finish.

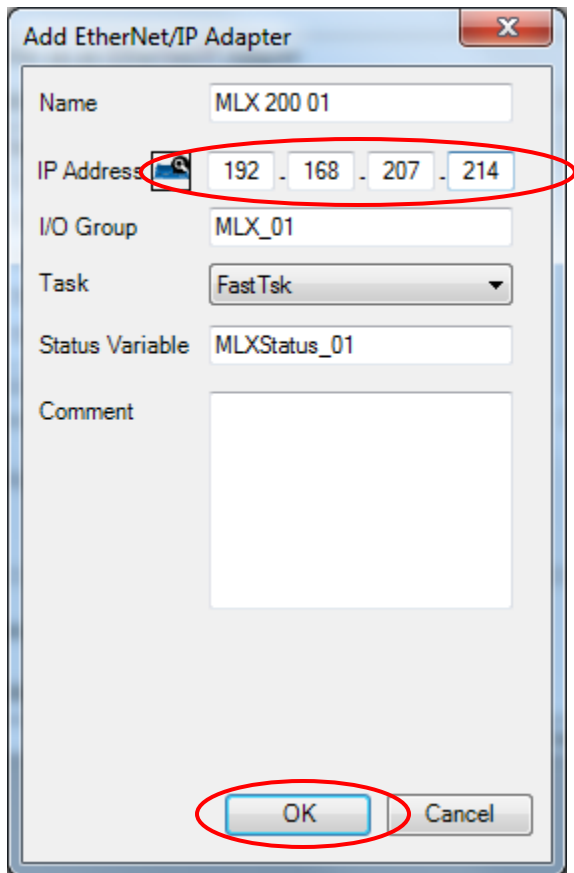


Title: How is an MPiec controller configured to communicate with an MLX200 robot controller?

Product(s): MP3200iec, MP3300iec

DOC. NO. CNT-BO2L4G

The 'Add EtherNet/IP Adapter' dialog is displayed. Enter the IP address of the MLX200 controller and click OK.



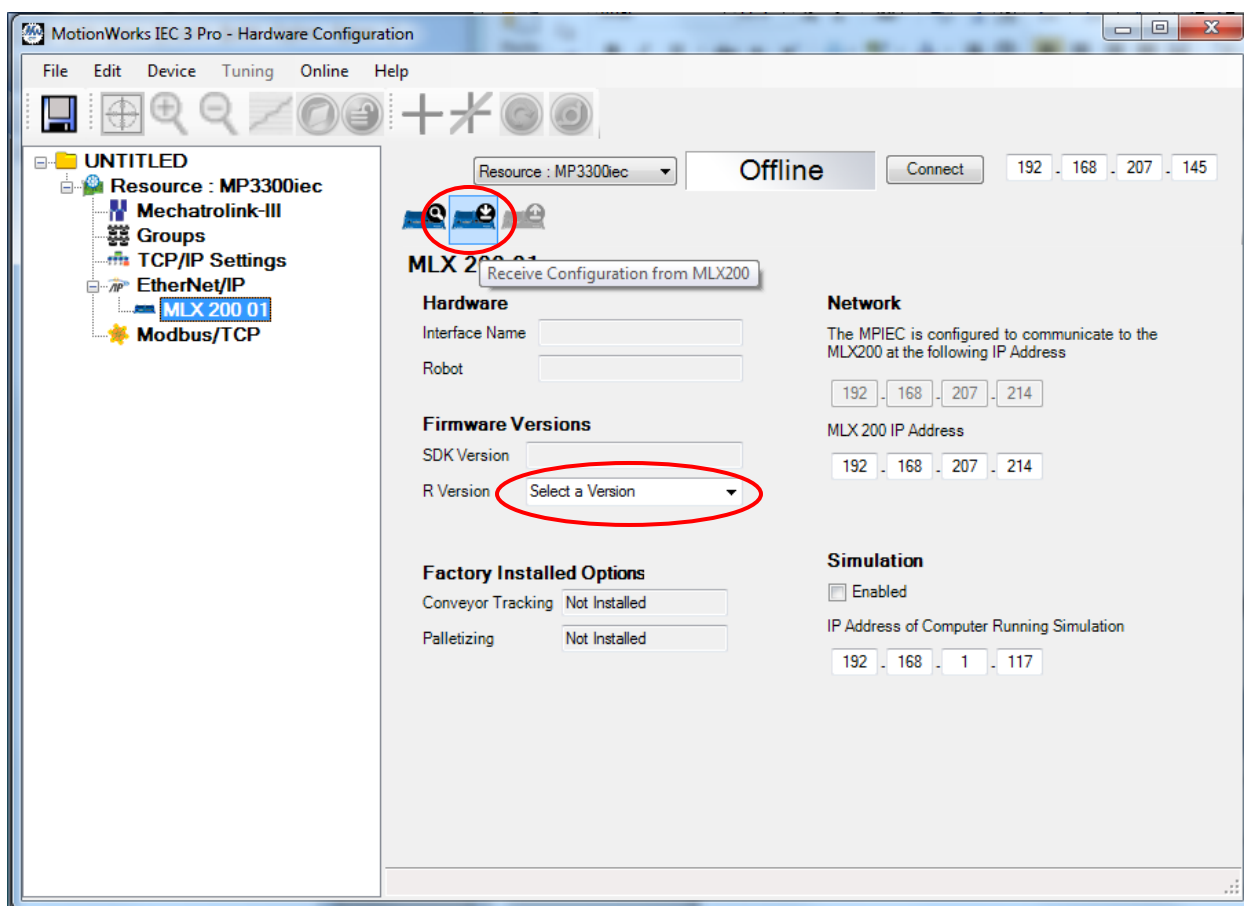
Title: How is an MPiec controller configured to communicate with an MLX200 robot controller?

Product(s): MP3200iec, MP3300iec

DOC. NO. CNT-BO2L4G

The MLX200 will appear in the tree under EtherNet/IP. Select the MLX200 from the tree to display the settings page for the MLX200.

If the MLX200 is powered on and connected to the same subnet as the computer running MotionWorks IEC, the configuration information contained within the MLX200 can be retrieved by pressing the 'Receive Configuration from MLX200' icon.



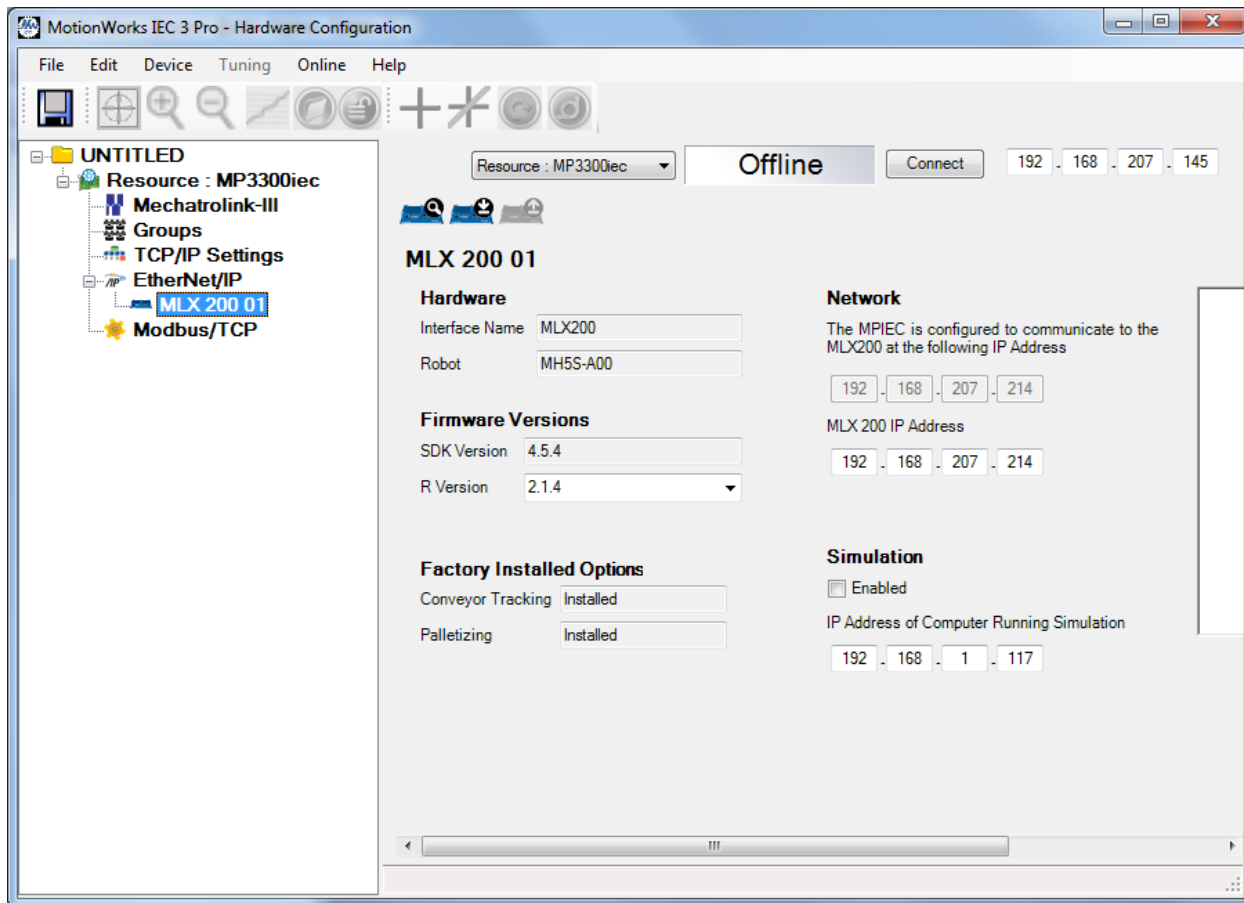
If the MLX200 is not available, select the latest firmware version in the R Version dropdown.

Title: How is an MPiec controller configured to communicate with an MLX200 robot controller?

Product(s): MP3200iec, MP3300iec

DOC. NO. CNT-BO2L4G

This is a display of the information populated after selecting the 'Receive Configuration from MLX200' icon.



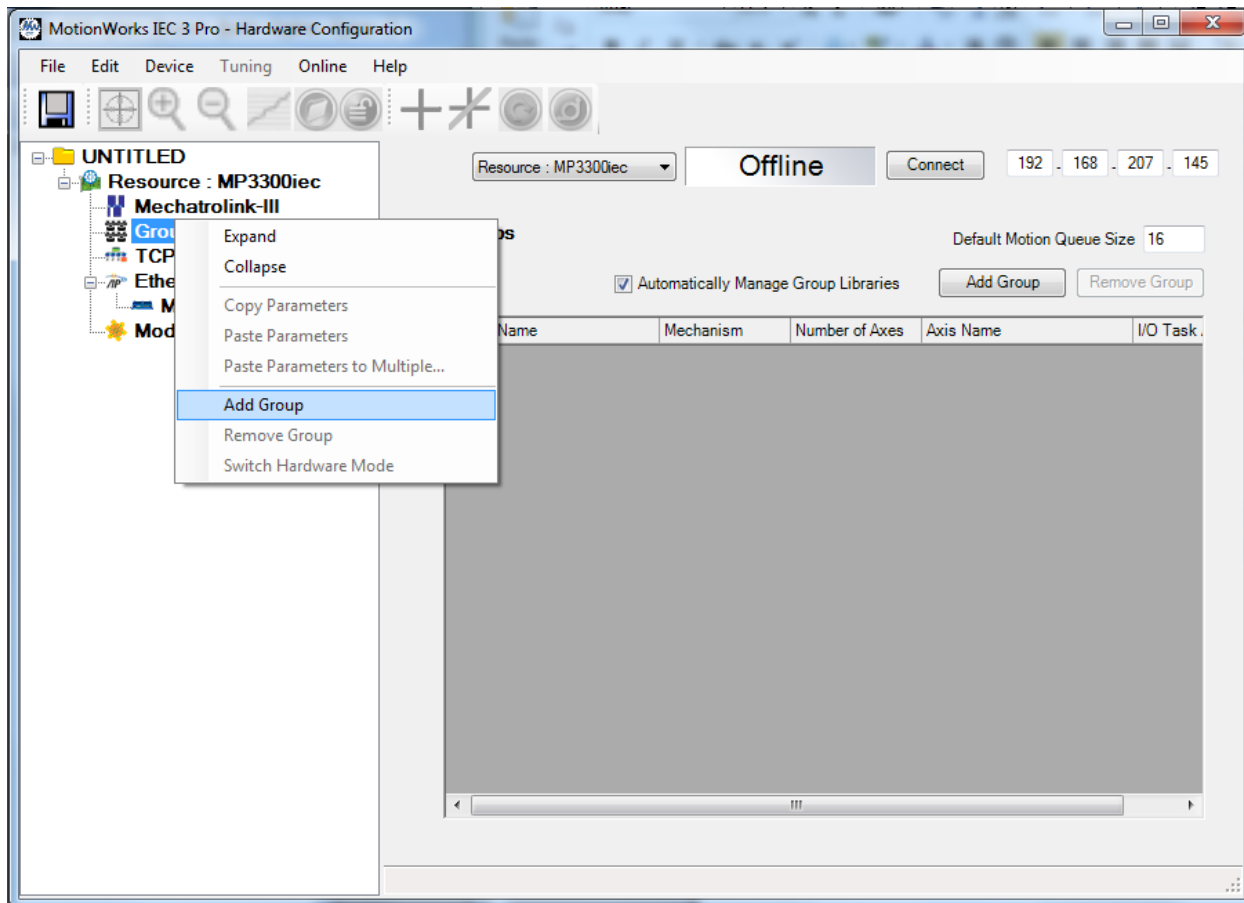
Title: How is an MPiec controller configured to communicate with an MLX200 robot controller?

Product(s): MP3200iec, MP3300iec

DOC. NO. CNT-BO2L4G

Add an MLX group

Right click on 'Groups' in the project tree and select 'Add Group.'

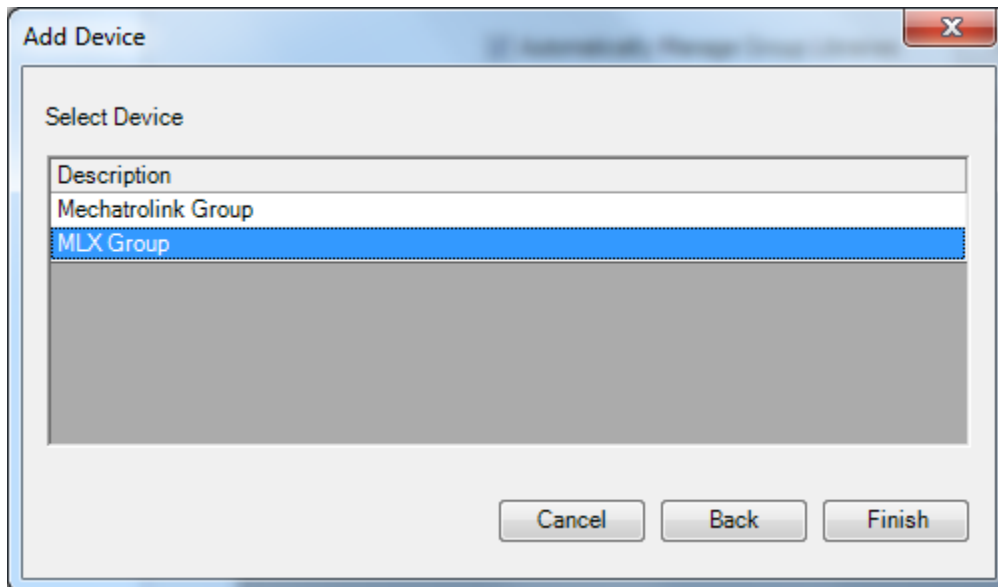


Title: How is an MPiec controller configured to communicate with an MLX200 robot controller?

Product(s): MP3200iec, MP3300iec

DOC. NO. CNT-BO2L4G

The 'Add Device' dialog will be displayed. Click on the 'MLX Group' and click 'Finish.'



Press the 'Save' icon in the upper left corner, or use the 'File -> Save' menu to save the configuration. This action will automatically add the libraries required to operate the MLX200 controller to the project.

Title: How is an MPiec controller configured to communicate with an MLX200 robot controller?

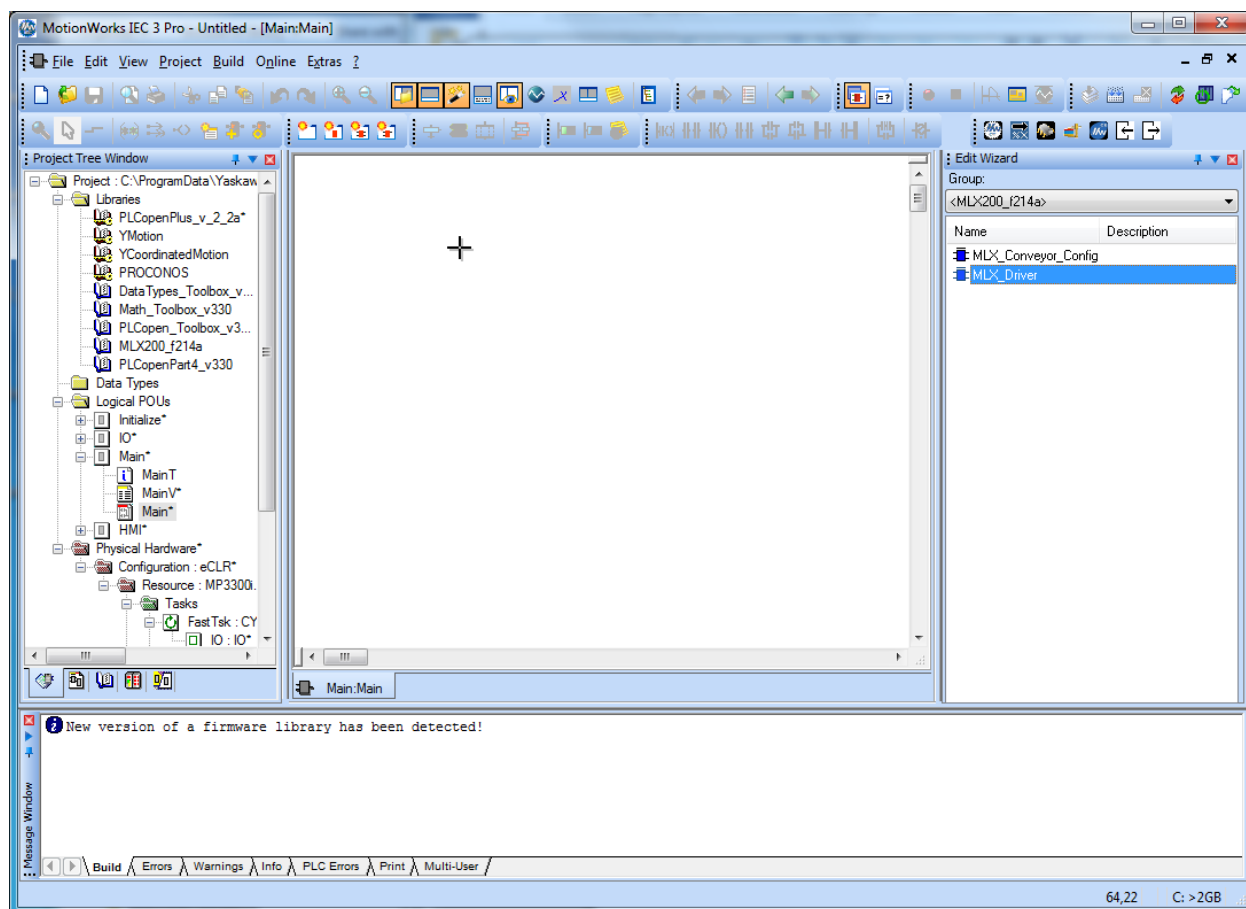
Product(s): MP3200iec, MP3300iec

DOC. NO. CNT-BO2L4G

Add the MLX_Driver function block

To communicate with the MLX200, the MLX_Driver function block must be included in the project. Select the MLX200_xxxx library in the 'Edit Wizard.' The xxxx corresponds to the firmware version in the MLX200 configuration.

Open a POU in which the function block will be inserted and either double click or drag and drop the MLX_Driver function block into the POU.



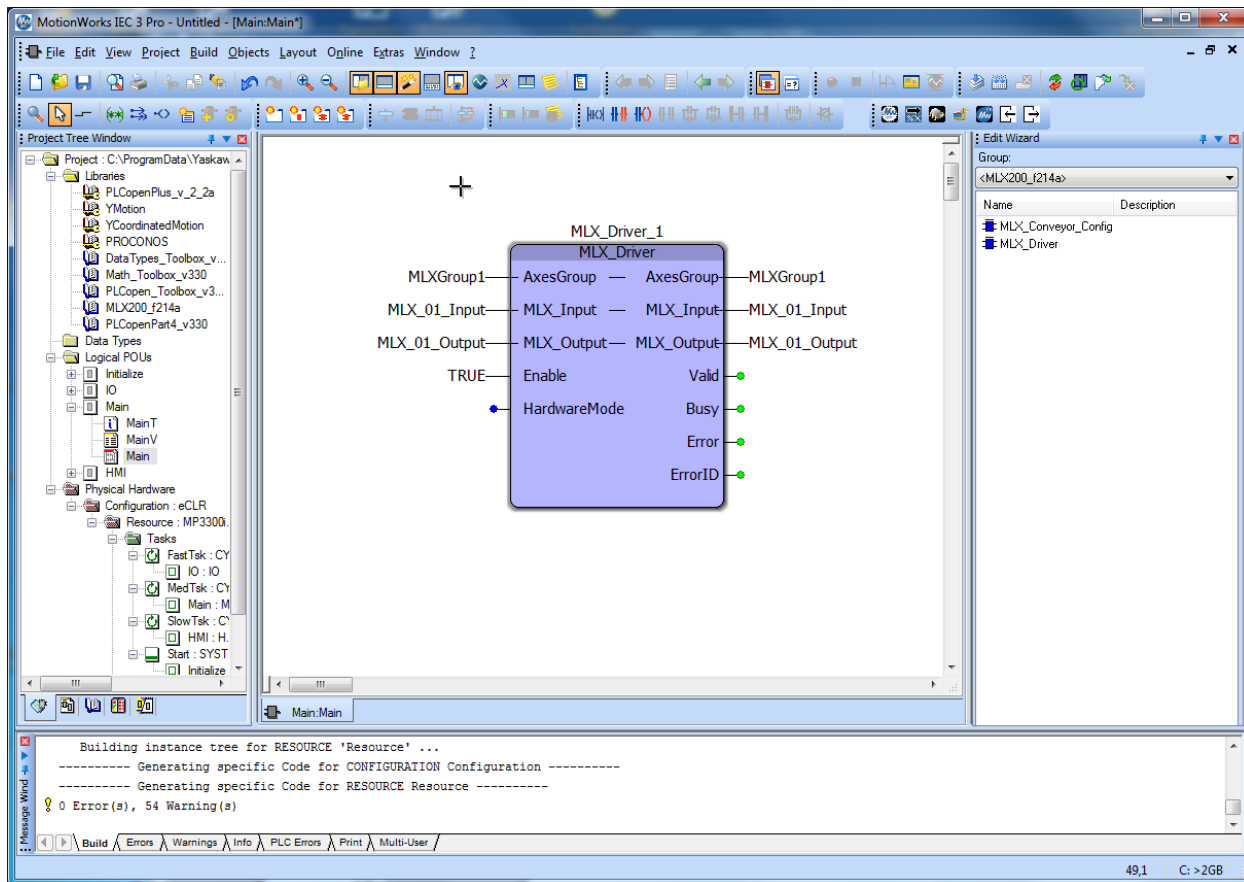
Connect variables MLXgroup1, MLX_01_Input and MLX_01_Output to the AxesGroup, MLX_Input, and MLX_Output function block inputs respectively. These variables were auto

Title: How is an MPiec controller configured to communicate with an MLX200 robot controller?

Product(s): MP3200iec, MP3300iec

DOC. NO. CNT-BO2L4G

created by saving in Hardware Configuration. If the default names were chosen for the MLX device and group, the names will be identical to those shown below.



The MPiec controller is now configured to communicate with the MLX200 controller.