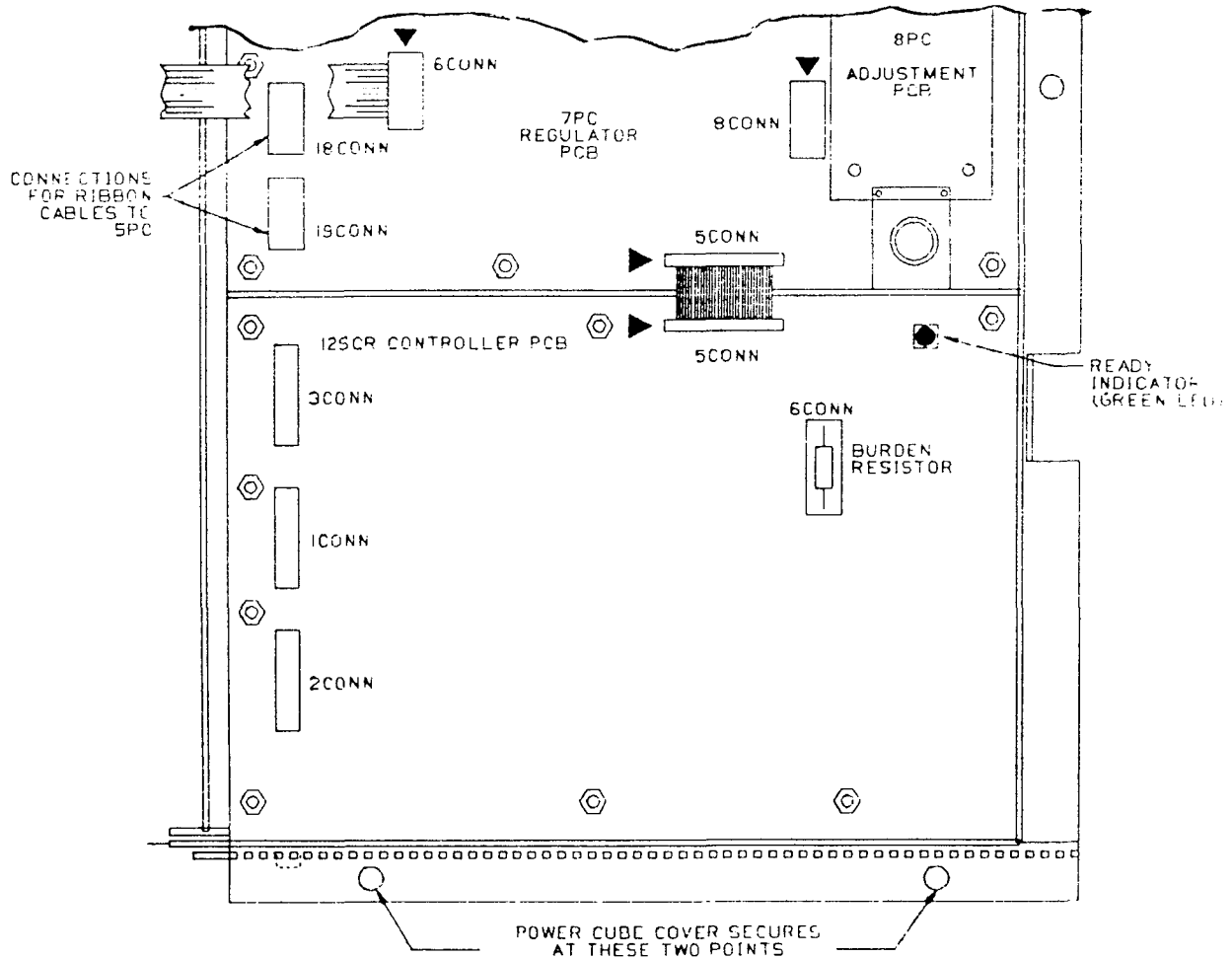


**BURDEN RESISTOR SELECTION
 FOR OVERLOAD PROTECTION
 KIT 46S02735-0010**

The standard Controller is shipped without a burden resistor in place on 6CONN of the 12SCR Controller PCB. See Figure 1 for location of 6CONN. The burden resistor calibrates the current feedback signal. For this reason, the motor characteristics (full load rated amps, HP, and voltage) must be matched

to the proper burden resistor value. Refer to Table 1 for selection of the burden resistor. The burden resistor kit contains a number of 6CONNS, each of which contains a different valued resistor. Select the 6CONN marked with the part number identified in Table 1 and insert into 6CONN.



Ref. TD13S FIG.2

Figure 1.

CHANGE RECORD

DWG. NO. 02Y00025-0215
 SHEET 1 OF 2
 EFF. 6/3/86

Table 1. Burden Resistor Selection

BURDEN RESISTOR ASSY. (6CONN) KIT PART NO. 46S02735-	DRIVE RATING		RATED FULL LOAD AMPERES	LOUIS ALLIS PART NO. 46S02641-
	VAC	HP		
0010	240	7.5	26.5 - 27.3 27.4 - 28.1 28.2 - 29.0	-0110 -0120 -0130
	500	15	25.2 - 25.8 25.9 - 26.4 26.5 - 27.0	-0090 -0100 -0110

DWG. NO. 02Y00025-0215
 SHEET 2 OF 2
 EFF. 6/3/86