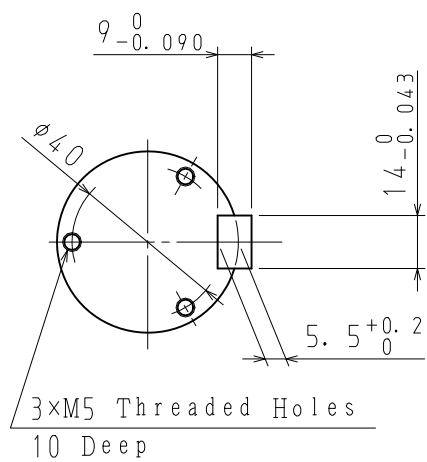
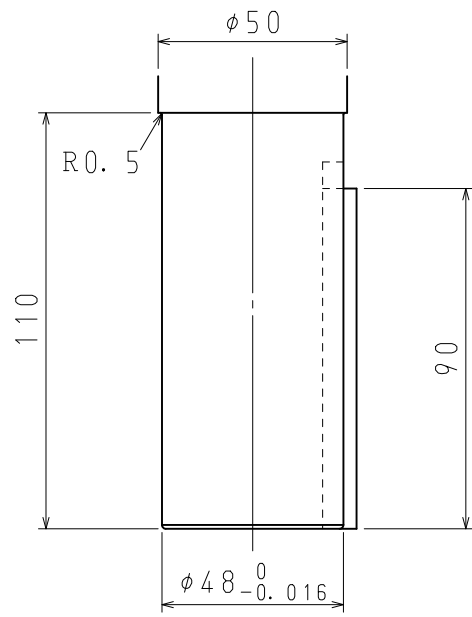
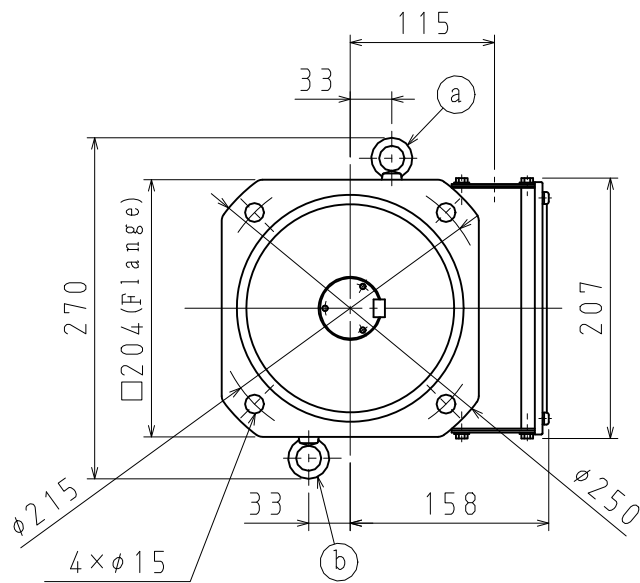
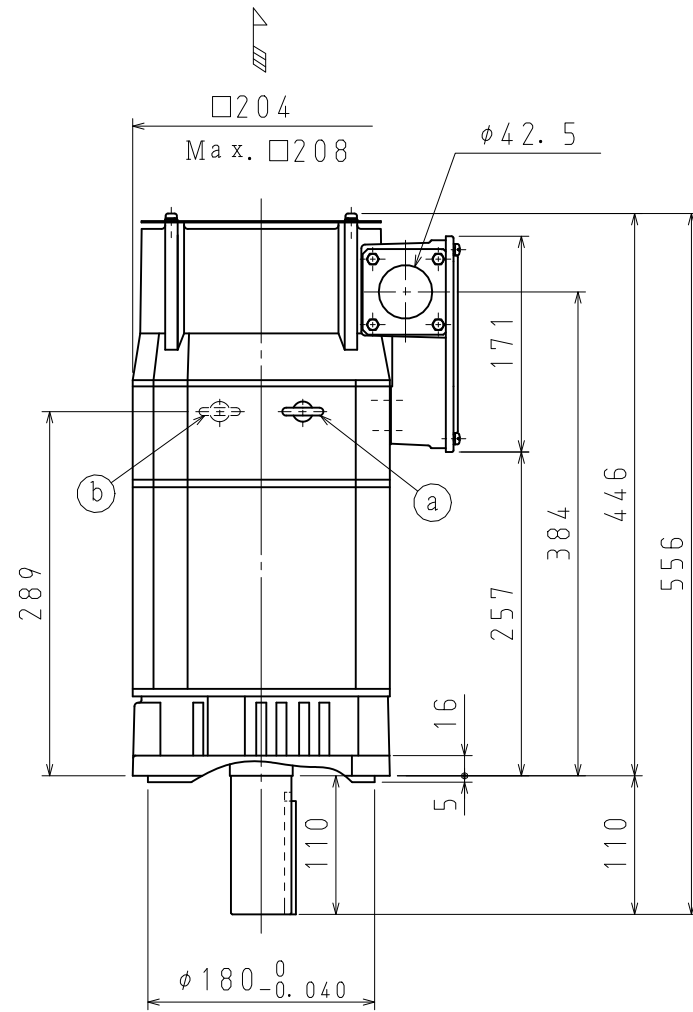


DWG. NO. 900-090-949

All dimensions are in mm.



Detail of Shaft Extension



NOTES.

1. Arrow () indicates the direction of cooling air.
2. Without OIL SEAL.

| | |
|--------------|--|
| Customer | |
| Estimate No. | |
| Order No. | |
| Item No. | |
| Application | |

Specification of Motor

| | | | | |
|--------------------------------------|---|---------------------|------------------------------------|----------------|
| Type | UAKAJ-11CZ1 | Cooling Method | Externally Fan-cooled Type | |
| Voltage | 200 V | Fan | Voltage 200/200 V | |
| Output | S3:50%ED 11 kW | Frequency | 50/60 Hz | |
| | S1:Cont. 7.5 kW | Input | 45/63 W | |
| Poles | 4 P | Current | 0.20/0.25 A | |
| Speed | Base 1500 min ⁻¹ | Thermal Class | F | |
| | Maximum 10000 min ⁻¹ | Ambient Temperature | 0~40°C | |
| | Minimum 40 min ⁻¹ | Vibration | V5 or Below | |
| Inertia ($\frac{GD^2}{4}$) | 0.026 kg·m ² | Noise | 75dB (A) or Below | |
| Over Load Capacity | Refer to the graph at the bottom. | Approx. Mass | 59kg | |
| Allowable Radial Load | 1470N at the shaft end | Painting | Munsell Notation N1.5 | |
| Protective Enclosure | IP44 | Inverter | Type Σ -V-SD, CACR-JU065A2A | |
| Vibration Resistance | 24.5m/sec ² or Below | | Output | 11/7.5 kW |
| Characteristics Tolerances (T. I. R) | Maximum Face Runout | 0.04 | Series | Standard |
| | Maximum Permissible Eccentricity of Mounting Rabbet | 0.04 | Encoder Type | UTMSI-10AAGAZA |
| | Shaft Runout at the End | 0.022 | Dimensions of terminal box | 900-111-516 |

| | | | |
|------------------------------|--|------------------------------|--|
| Output-Speed Characteristics | | Torque-Speed Characteristics | |
| | | | |

Remarks

•Peak power is the reference characteristic to calculate acceleration time, not guaranteed characteristic.

F

Jun. 31, '12
Jun. 15, '11

K. Maruyama/M. Matsunoto
K. Maruyama/M. Matsunoto



SCALE 1 : 6

DRAW. K. Maruyama
CHECK H. Shimono
APPR. M. Matsunoto

TITLE Dimensions of AC Spindle motor

DATE Dec. 10, '10

DWG. NO.

900-090-949

REV.

2

F