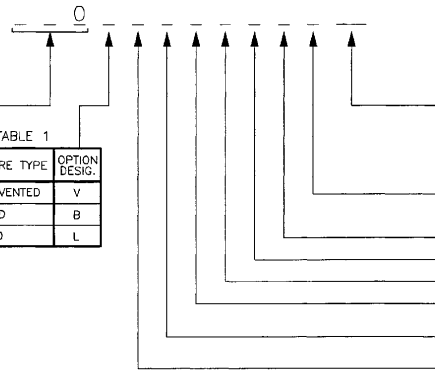


PRODUCT DESCRIPTION →



OPTION TABLE 2

OPTION DESIGNATOR	DESCRIPTION
Y1	2CN OPTION - CM043 METASYS N2 COMMUNICATIONS
Y2	2CN OPTION - CM045 FLN COMMUNICATIONS
Y3	2CN OPTION - CM047 ECHELON LONWORKS COMMUNICATIONS
Y4	2CN OPTION - CM086 RS-232 TO RS-485 INTERFACE
Y5	2CN OPTION - DS006 ANALOG MONITOR - V/I
SEE TABLE 3 FOR OPTION DESIGN.	RFI NOISE SUPPRESSION NETWORK
	ENGRAVED DRIVE CABINET NAMEPLATE
	SPEED POT
X	DC BUS LINK REACTOR (BASE NO.'S A1-A9, B1-B9, D1-D8, ONLY)
R	INPUT REACTOR
P	PRESSURE TRANSDUCER (3-15 PSI)
M	MANUAL(HAND)/OFF/AUTO SWITCH
F	INPUT FUSED DISCONNECT SWITCH (BASE NO.'S A1-A7, B1-B7, D1-D6 ONLY)
	INPUT FUSING (BASE NO.'S A8-AF, B8-BH, D7-DE ONLY)
C	INPUT CIRCUIT BREAKER

NOTES:

- * COMPONENTS NOT SUPPLIED BY YASKAWA.
- CUSTOMER WIRING. - FOR 0 TO 100 AMPS, USE 60°-75°C COPPER WIRE. ABOVE 100 AMPS, USE 75 °C COPPER WIRE.
- CUSTOMER CONNECTION POINT ON PANEL MOUNTED TERMINAL BLOCK TB1. TORQUE WIRE CONNECTIONS TO 10 LB. IN.
- FACTORY CONNECTION POINT ON DRIVE A1.
- REFER TO THE PRODUCT DESCRIPTION AND ASSOCIATED OPTION TABLES TO DETERMINE WHICH OPTIONS ARE PRESENT.
- 1. CONNECTED TO CABINET. CUSTOMER TO CONNECT CABINET GROUND LUG TO EARTH GROUND.
- 2. TERMINALS PROVIDED FOR INSERTION OF NORMALLY OPEN AUTO MODE RUN/STOP CONTACT.
- 3. INSULATED TWISTED SHIELDED WIRE IS REQUIRED. 2 CONDUCTOR #18GA. (BELDON #8760, OR EQUIVALENT). SHIELD TO CONNECT TO PROPER TERMINAL AS SHOWN. CONNECT THE SHIELD ONLY AT THIS END. STUB AND ISOLATE THE OTHER END. DO NOT RUN THESE WIRES IN THE SAME CONDUIT AS THE AC POWER AND AC CONTROL WIRES.
- 5. WHEN PRESSURE TRANSDUCER (OPTION P) IS PRESENT (SEE OPTION TABLE 2), CONNECT THE PNEUMATIC SIGNAL AS SHOWN ON PAGE 1.
- 6. MANUAL(HAND)/OFF/AUTO SWITCH OPERATION: THE FUNCTION OF THE MANUAL/OFF/AUTO SWITCH IS TO SELECT SPEED AND RUN/STOP CONTROL. THE AUTO POSITION SELECTS THE AUTO SIGNAL INPUT FOR SPEED AND A CUSTOMER SUPPLIED CONTACT FOR A RUN COMMAND. THE MANUAL POSITION SELECTS THE CABINET DOOR MOUNTED SPEED POT R1 FOR SPEED AND SUPPLIES A RUN COMMAND.
- 7. BRANCH CIRCUIT PROTECTION (CIRCUIT BREAKER OR AC INPUT FUSES) MUST BE SUPPLIED BY THE CUSTOMER.
- 8. IF A "2 WIRE" OR "3 WIRE" INITIALIZATION IS PERFORMED ON THE DRIVE, THEN THE DRIVE PARAMETERS NEED TO BE RE-ENTERED, AS SHOWN IN THE SPECIAL PARAMETER SETTINGS TABLES 4, 5 AND 6.
- 9. SERIAL COMMUNICATIONS RUN/STOP CONTROL: THE MANUAL/OFF/AUTO SWITCH S1 MUST BE IN THE "AUTO" POSITION, IF SERIAL COMMUNICATIONS IS TO BE USED TO CONTROL THE RUN/STOP OF THE DRIVE.

RATING (SELECT ONLY ONE)

RATED INPUT	DRIVE MODEL NO. (F3000V)	120% OL APPLICATIONS		BASE NO.
		100% CONTINUOUS OUTPUT CURRENT(A)	NOMINAL HP	
208V	A006	6	1.5	D10
	A008	8	2	D20
	A011	11	3	D30
	A017	17.5	5	D40
	A027	27	7.5	D50
	A036	36	10	D60
	A054	54	15	D70
	A068	68	20	D80
	A080	80	25	D90
	AT04	100	30	DA0
	AT30	130	40	DB0
	AT60	160	50	DD0
AT92	192	60	DD0	
A248	248	75	DD0	
230V	A006	6	1.5	A10
	A008	8	2	A20
	A011	11	3	A30
	A017	17.5	5	A40
	A027	27	7.5	A50
	A027	27	10	A60
	A036	36	15	A70
	A054	54	20	A80
	A068	68	25	A90
	A080	80	30	A40
	A104	104	40	AB0
	A130	130	50	AC0
A160	160	60	AD0	
A192	192	75	AEC	
A248	248	100	AF0	
460V	B001	1.8	0.75	B10
	B003	3.4	1.5	B20
	B004	4.8	3	B30
	B008	8	5	B40
	B011	11	7.5	B50
	B014	14	10	B60
	B021	21	15	B70
	B027	27	20	B80
	B034	34	25	B90
	B041	41	30	BA0
	B052	52	40	BB0
	B065	65	50	BC0
B080	80	60	BD0	
B096	96	75	BE0	
B128	128	100	BF0	
B180	156	125	BG0	
B180	180	150	BH0	

OPTION TABLE 1

ENCLOSURE TYPE	OPTION DESIG.
NEMA 1 VENTED	V
BLOWERED	B
LOUVERED	L

SPECIAL PARAMETER SETTINGS TABLE 4 (SEE NOTE 8)

PARAMETER	DATA	UNIT	DESCRIPTION/REMARKS
n001	3	N/A	READ/WRITE TO ALL PARAMETERS
n002	SEE TABLE 6	N/A	DRIVE OPERATION MODE SELECTION
n003	460(230)	V	STANDARD MAX VOLTAGE SETTING
	208	V	MAX VOLTAGE SETTING FOR BASE NO. "D_"
n033	---	AMPS	MOTOR FULL LOAD AMPS-(MUST BE SET BY CUSTOMER)
n039	SEE TABLE 5	N/A	TERMINAL S5 MULTI-FUNCTION INPUT SELECTION
n043	SEE TABLE 5	N/A	TERMINALS F1 AND FV ANALOG INPUT SELECTION
n044	SEE TABLE 5	N/A	TERMINAL F1 SIGNAL INPUT SELECTION

OPTION COMBINATION TABLE 3

OPTION	OPTION DESIGNATION						
	1	2	3	4	5	6	7
RFI NOISE SUPPRESSION NETWORK	0	0	0	1	1	1	1
ENGRAVED DRIVE CABINET NAMEPLATE	0	1	1	0	0	1	1
SPEED POT	1	0	1	0	1	0	1

1 = OPTION IS PRESENT

DRIVE PARAMETER FACTORY SETTINGS TABLE 5

PARAMETER	OPTION PRESENT		
	NOT M & NOT P	M	M AND P
n039	10	9	9
n043	0	1	1
n044	1	1	0
AUTO MODE SPEED REF.	N/A	4-20MADC	3-15PSI
CUT CONTROL BOARD JUMPER J1	NO	NO	YES

DRIVE OPERATION MODE SELECTION TABLE 6

n002 SETTINGS	RUN/STOP COMMAND	FREQUENCY REFERENCE	SEE NOTE
0	KEYPAD	KEYPAD	
1	EXT. TERMINALS	KEYPAD	
2	KEYPAD	EXT. TERMINALS	
3 FACTORY SETTING	EXT. TERMINALS	EXT. TERMINALS	
4	KEYPAD	SERIAL COMM.	
5	EXT. TERMINALS	SERIAL COMM.	
6	SERIAL COMM.	SERIAL COMM.	9
7	SERIAL COMM.	KEYPAD	9
8	SERIAL COMM.	EXT. TERMINALS	9