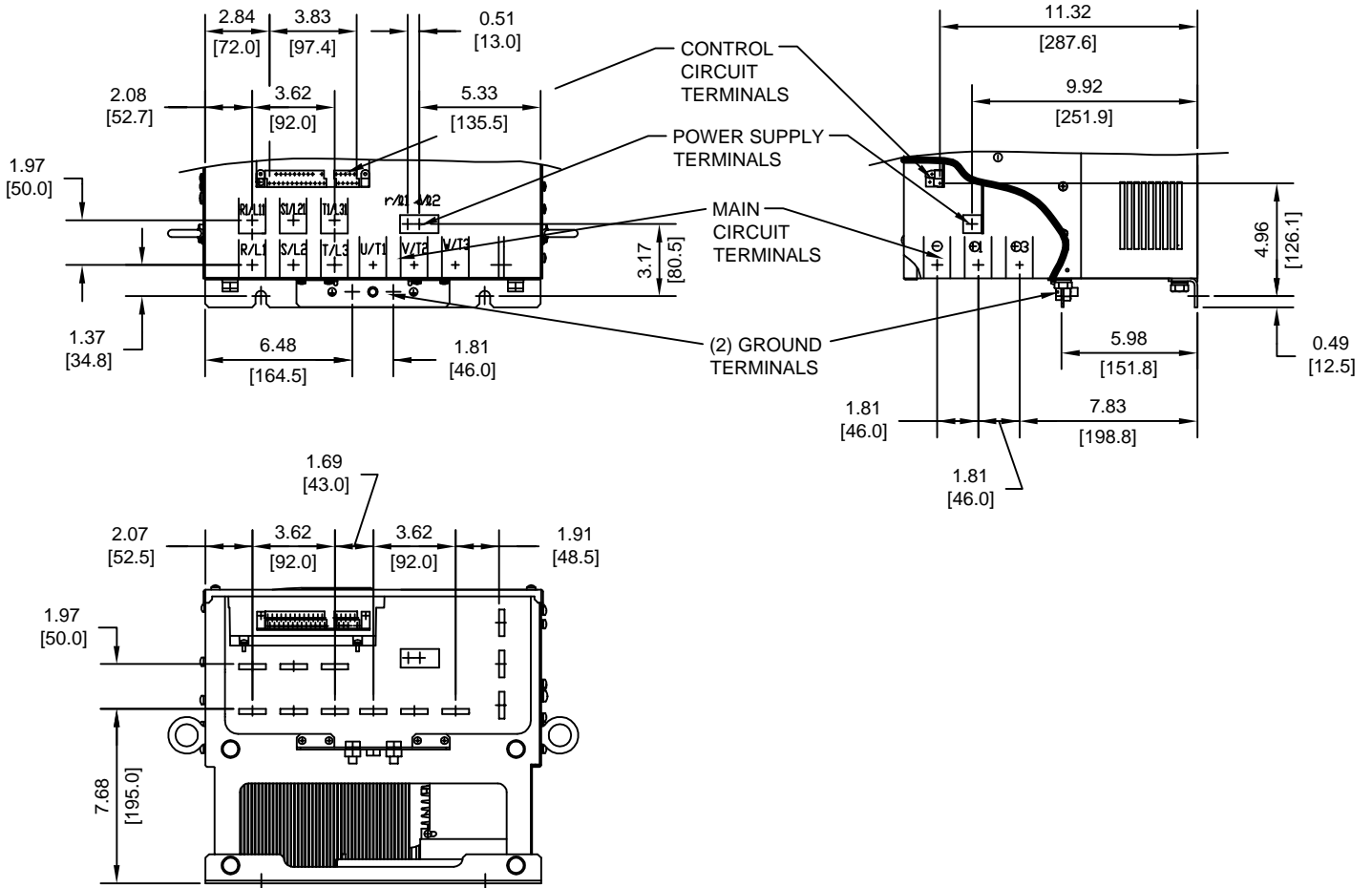


TERMINAL AND WIRING DETAILS (SCALE 1:8)



TERMINAL SPECIFICATIONS FOR
MAIN CIRCUIT AND GROUND

| MODEL # | TERMINAL SYMBOL | TERMINAL SCREW | CLAMPING TORQUE lb.in.(N.m.) |
|----------------------|--|----------------|------------------------------|
| CIMR-E7U 2045 | R/L1, S/L2, T/L3, ⊖, ⊕1, R1/L11, S1/L21, T1/L31, U/T1, V/T2, W/T3, ⊕ | M10 | 155 TO 198 (17.6 TO 22.5) |
| | ⊕3 | M8 | 77.4 TO 95.0 (8.8 TO 10.8) |
| | r/l1, s/l2 | M4 | 11.4 TO 12.3 (1.3 TO 1.4) |

NOTE: REFER TO APPLICABLE CODES FOR PROPER WIRE TYPE AND SIZE

FOR ADDITIONAL DETAILS AND SPECIFICATIONS, CONSULT MANUAL

| | | | | | | |
|--|--|-------------------------|-----------------|--|-----------------|----------------|
| TOLERANCES/REFERENCES: - - - - - - | <p>YASKAWA A World of Automation Solutions™</p> <p>YASKAWA ELECTRIC AMERICA, INC. Corporate Headquarters 2121 Norman Drive South Waukegan, IL 60085 1-800-YASKAWA http://www.yaskawa.com</p> | DRAWN: J. MATTAS | DATE 4-14-05 | TITLE: E7 DIMENSION DRAWING | | |
| | | CHECKED: M. RUCINSKI | DATE 5-3-05 | FRAME SIZE 8 | | |
| | | TECH: J. CAIRO | DATE 4-15-05 | IP00 ENCLOSURE | | |
| | | APPROVED: T. SASADA | DATE 6-8-05 | E7U2045 | | |
| UNITS: IN[mm] | SCALE: BY VIEW | ORIGINAL DESIGN: - | DATE - | SIZE A | REVISION R00 | PAGE 2 of 3 |
| | | | | DRAWING #: DD.E7.FR8.IP00.01 | | |

