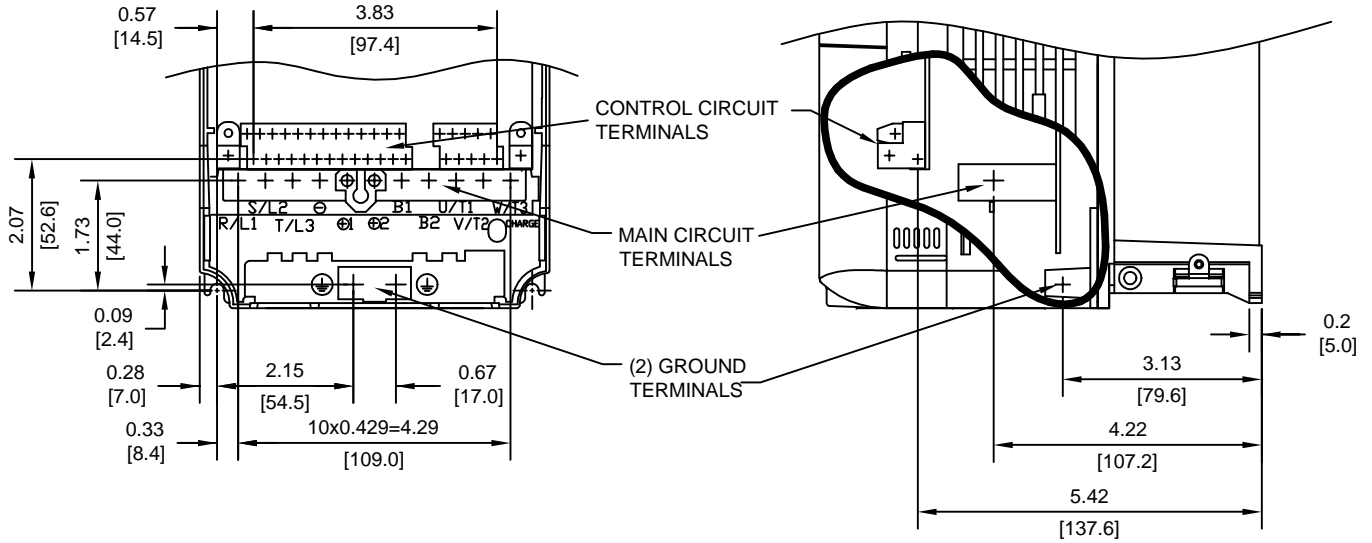


TERMINAL AND WIRING DETAILS (SCALE 1:3)



TERMINAL AND WIRE SPECIFICATIONS FOR MAIN CIRCUIT AND GROUND

MODEL # CIMR-F7U	TERMINAL SYMBOL	TERMINAL SCREW	CLAMPING TORQUE lb.in.(N.m.)	WIRE RANGE AWG(mm ²)
23P7	R/L1, S/L2, T/L3, ⊙, ⊕1, ⊕2, B1, B2, U/T1, V/T2, W/T3, ⊕	M4	10.6 TO 13.2 (1.2 TO 1.5)	18-10 (0.82-5.5)
25P5	R/L1, S/L2, T/L3, ⊙, ⊕1, ⊕2, B1, B2, U/T1, V/T2, W/T3, ⊕	M4	10.6 TO 13.2 (1.2 TO 1.5)	18-10 (0.82-5.5)
42P2	R/L1, S/L2, T/L3, ⊙, ⊕1, ⊕2, B1, B2, U/T1, V/T2, W/T3, ⊕	M4	10.6 TO 13.2 (1.2 TO 1.5)	18-10 (0.82-5.5)
43P7	R/L1, S/L2, T/L3, ⊙, ⊕1, ⊕2, B1, B2, U/T1, V/T2, W/T3, ⊕	M4	10.6 TO 13.2 (1.2 TO 1.5)	18-10 (0.82-5.5)
44P0	R/L1, S/L2, T/L3, ⊙, ⊕1, ⊕2, B1, B2, U/T1, V/T2, W/T3, ⊕	M4	10.6 TO 13.2 (1.2 TO 1.5)	18-10 (0.82-5.5)
45P5	R/L1, S/L2, T/L3, ⊙, ⊕1, ⊕2, B1, B2, U/T1, V/T2, W/T3, ⊕	M4	10.6 TO 13.2 (1.2 TO 1.5)	18-10 (0.82-5.5)

NOTE: REFER TO APPLICABLE CODES FOR PROPER WIRE TYPE AND SIZE

FOR ADDITIONAL DETAILS AND SPECIFICATIONS, CONSULT MANUAL

TOLERANCES/REFERENCES: - - - - - -	<p>YASKAWA A World of Automation Solutions™</p> <p>YASKAWA ELECTRIC AMERICA, INC. Corporate Headquarters 2121 Norman Drive South Waukegan, IL 60085 1-800-YASKAWA http://www.yaskawa.com</p>	DRAWN: J. MATTAS DATE 4-17-03	TITLE: F7 DIMENSION DRAWING FRAME SIZE 2 NEMA TYPE 1/IP20 AND IP00 F7U23P7 TO 25P5, 42P2 TO 45P5			
		CHECKED: M. RUCINSKI DATE 5-13-03	TECH: J. CAIRO DATE 4-29-03	SIZE A	REVISION A	PAGE 2 of 3
		APPROVED: T. SASADA DATE 5-13-03	ORIGINAL DESIGN: - DATE -	DRAWING #: DD.F7.FR2.N1.01		
		UNITS: IN[mm]	SCALE: BY VIEW			

